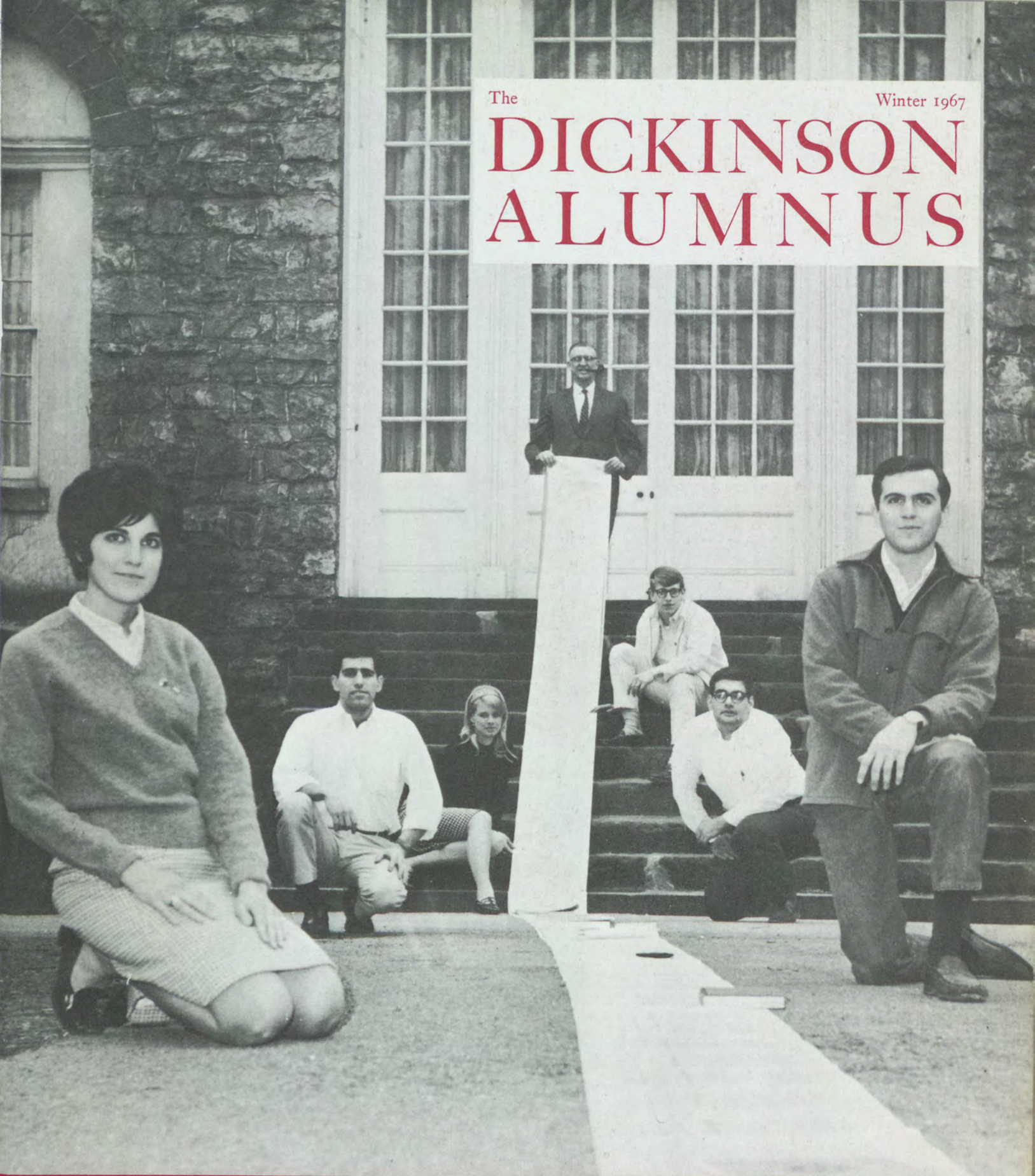


The

Winter 1967

DICKINSON ALUMNUS



Dickinson College *Changes* Personality

THE DICKINSON ALUMNUS

Winter 1967, Vol. 44, No. 1

HONORARY EDITOR
Dean Hoffman, '02

EDITOR
Vincent J. Schafmeister, Jr., '49

ALUMNI PUBLICATIONS COMMITTEE

Samuel J. McCartney, Jr., '41, *Chairman*
Robert G. Crist, '47
William B. Harlan, '50
David McGahey, '60
Whitfield J. Bell, Jr., '35
Barbara A. Buechner, '63
M. Charles Seller, '55

The Dickinson Alumnus is published quarterly. Entered as second class matter May 23, 1923, at the Post Office at Carlisle, Pa., under the Act of Congress of March 3, 1879.

Cover: The IBM tape, held by Professor Donald T. Graffam and escorted halfway to Bosler by students who assisted him on the study entitled "Dickinson College *Changes* Personality," contains the scientific data from which the substance of Dr. Graffam's article was extracted. The photograph is by Thomas A. Miller, '68. Martha J. Young, '62, inspired the cover design.

In This Issue:

Dickinson *Changes* Personality
Page 2

Graven Images
Page 8

Teweldeberhan
Page 10

Life Membership Roster
Page 13

Letters to the Editor
Page 22

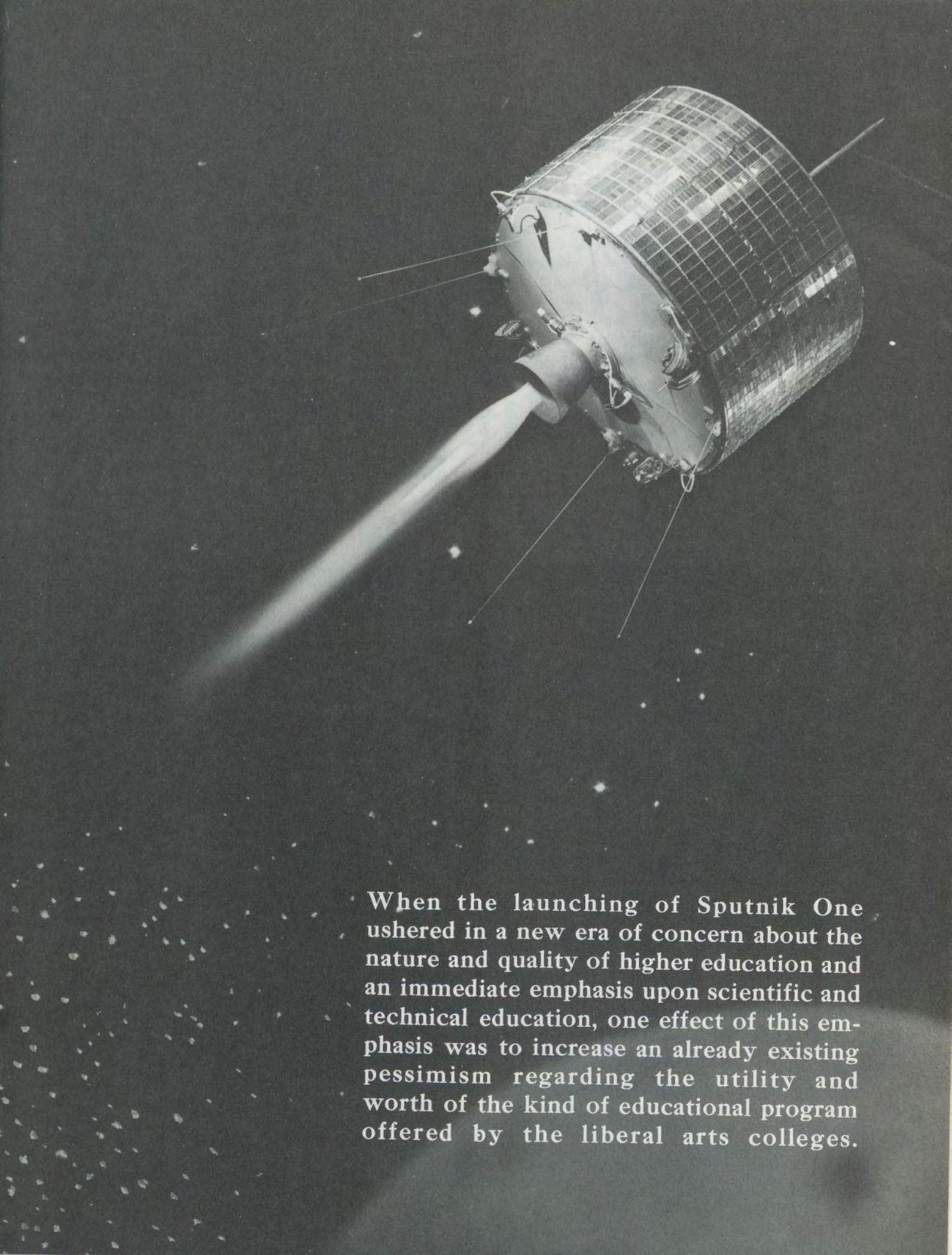
Around the Campus
Page 24

Personal Mention
Page 27

Obituaries
Page 38

Special Mention
Page 40





When the launching of Sputnik One ushered in a new era of concern about the nature and quality of higher education and an immediate emphasis upon scientific and technical education, one effect of this emphasis was to increase an already existing pessimism regarding the utility and worth of the kind of educational program offered by the liberal arts colleges.

Dickinson College

Changes

Personality

By Dr. Donald T. Graffam

Dickinson College is a potent college!

Four year's attendance at Dickinson College changes personality of individuals and groups in wholesome ways that indicate a significant gain in maturity over whatever changes occur in adolescents and young adults as a result of merely growing four years older.

This fact constitutes the major finding of a longitudinal research project carried on by the writer since 1960 in which the classes of 1964, 1965, and 1966 were given personality tests at the beginning and end of their college careers. The project has been supported in part by grants from the Faculty Research Fund.

The genesis of the study may be traced to several

events in 1957, an ominous year for the liberal arts colleges of America. While these events have no direct logical connection with a study of personality change in a liberal arts college, they nevertheless combine to form the background of the investigator's interest in making such a study.

The most important of these events occurred October 4, 1957 when the launching of Sputnik I ushered in a new era of concern about the nature and quality of American higher education and an immediate emphasis upon scientific and technical education. One effect of this emphasis was to increase an already existing pessimism regarding the utility and worth of the kind of educational program offered by liberal arts colleges.

**It Can be Demonstrated That During
Their Dickinson Experience Students
Mature Significantly, Well in Excess
of Merely Growing Four Years Older**

In addition to a growing general tendency to denigrate liberal arts colleges in the new scientific-technological society, further damage to their image accrued from the implications of an exhaustive and widely publicized study on change in college students known as the "Jacob Report." The author reached the pessimistic conclusion that, with a few noteworthy exceptions such as Antioch, Bennington, Harvard, and Reed Colleges, liberal arts colleges have been *impotent* in their impact on values and personality attributes, and that they merely socialize rather than liberalize their products.

These events, plus the prospects of increasing financial difficulties due to rising costs, in contrast to the relatively secure position of state-supported institutions, presented a discouraging picture that augured ill for the future of small, meagerly endowed liberal arts colleges. *Yet if it could be demonstrated that one or several small, privately endowed colleges actually produce wholesome basic changes in its students, they might be able to justify the higher fees which would be necessary for their continued existence and win greater financial support from private sources.*

Jacob himself suggested what this new line of research might be. In his foreword, he had raised a question about the relationship between personality and values but he dismissed it later on by stating, "This query, if pursued adequately, would extend far beyond the compass and competence of the present inquiry, and into deep psychological waters."

Thus he limited his investigation to a study of values without probing the more basic problem of changes in personality structure, yet made possible the inference by readers of the report that if students' values do not change significantly in college, neither do their personalities. No evidence was presented to support such an inference.

Obviously, any fair assessment of the potency of a college should include a study of personality correlates as well as values. Consequently, one goal of the investigator has been that of developing a pilot study in one college to provide a research model applicable to any number of institutions of higher learning whereby their potency may be assessed in terms of impact on most of the main dimensions of personality thus far identified by factor analytic research. These dimensions taken together compose the "personality structure" either of an entire class, subgroups of the class, or single individuals.

This article reports one segment of the study concerned with the first two classifications—the Class of 1964 taken as a whole and divided into groups by sex, by academic subculture (A.B. vs. B.S. program), and by social subculture (fraternity vs. nonfraternity membership), together with their eight interacting subgroups. The report is not concerned with changes in single individuals, but with changes in the person-

ality structure, or "syntality," of the entire class between September, 1960 and April, 1964. To the extent that the Class of 1964 is typical of other classes immediately preceding and following it, inferences from the study's findings may be applied to those groups.

The writer was able to obtain a detailed sample of the class consisting of 125 men and 64 women, a total of 189 four-year persisters, or 88% of all graduates in 1964 who had attended four years without interruption. Data consisted of responses as freshmen and again as seniors to the *Sixteen Personality Factor Questionnaire* by Dr. Raymond B. Cattell, Professor of Psychology and Director of the Laboratory for Assessment of Personality and Group Behavior at the University of Illinois, and to a questionnaire prepared by the investigator. The data were punched into IBM cards and processed for treatment by analysis of variance to determine significant differences in pre- and post-test means for total sample and its subgroups, using Fisher's test at the .05 level of confidence.

THE effect of change due to increasing age was subtracted from the senior scores.

The 16 P.F. was chosen because it was and still is the only instrument available which, according to basic factor analytic research, captures most of the main dimensions of personality along which people can differ; i.e., which measures the significant variables of personality that contribute nearly all of the variance in behavior among persons whether within or between cultures. The usefulness of the instrument is attested to by the vast amount of research that has been done on its validity and by the fact that it is widely used throughout the free world by psychologists, sociologists, and anthropologists. The writer's use of it in 1960, however, was its first application to the study of personality changes in college. Since then several other institutions of higher learning have followed suit and it is possible that the present model or one similar to it will be in common use eventually.

THE objectives of the study are first, to measure the extent of change in each of sixteen personality traits in college students completing a four-year liberal arts program without interruption and second, to examine those changes in the light of three subcultures: (1) sex or male-female subculture (2) academic subculture or A.B. vs. B.S. curricula, and (3) social subculture or fraternity vs. nonfraternity status. The scores on each of the 16 dimensions, then, are the dependent variables in the study and the subcultures are the independent variables. In other words, the present report attempts to answer the following questions: Do personality changes occur in students attending Dickinson College?

If so, do the changes reflect a shift in the direction of maturity? To what extent do the three subcultures influence these changes?

Emphatic affirmative answers to the first two questions are presented graphically in Figure 1 (see page 6) which shows that significant changes occurred in ten of the sixteen dimensions; namely, Factors B, E, G, I, L, N, O, Q₁, Q₂, and Q₄. All of these changes are interpreted by Cattell and the writer as being in the direction of increased maturity. Absolute changes in scores of four other factors (A, C, F, M), while not significant, are also in a desirable direction. Only two factors seemed unaffected by the press of the college, H (restrained-spontaneous) and Q₃ (casual-self-disciplined), yet the senior scores, uncorrected for age effects, moved significantly in the direction of maturity.

THE answer to the third question involves within and between comparisons of 18 pairs of means arranged in a three-way classification table, (*sex* by *curriculum* by *social status*) and each of these may be compared to six sets of norms. Lacking access to a computer, the writer performed these comparisons by hand. The detailed results are far too voluminous to be reported here, since all possible comparisons of freshman and senior scores and their differences for total and for subgroups can be made.

In general it can be said that the trend of changes in personality factors for men and women were strikingly similar, so that they could be reported together, as is done in Fig. 1. In other words, the independent variable of sex subculture contributes so little to changes in group syntality that it can for the most part, be ignored.

This is not true, however, of the academic subculture (A.B. vs. B.S. curricula) and the social subculture (fraternity vs. nonfraternity), since each operates either as a selective or reinforcing agency, or both, with respect to certain personality factors. For example, on Factor B, the dull-bright dimension, the sciences are selective of students with higher scores initially, but *all* of the gain is contributed by the humanities so that the A.B. candidates have higher scores as seniors. Since the B test measures verbal logical reasoning ability, this finding may not be as surprising as it seems.

Again, with regard to Factor A (reserved, detached vs. warmhearted, participating), men and women in the A.B. curriculum are above average, compared to national norms, while those in the B.S. curriculum are below average. Thus the liberal arts are selective and reinforcing influences on Factor A. This finding is also consistent with the fact that scientists tend to be low on this trait. The social subculture operates in a selective manner in that outgoing men and women join fraternities but show no gain. Those who do not join tend to be low as freshmen but attain average as seniors (indicating that the total college press exerts a social-influence).

“College Kids Grow up”

The important contribution to knowledge about the Dickinson College community and its potency is contained in the profile for the total sample rather than in an analysis of specific facts about its subcultures, since an examination of the former reveals a clear visual picture of the syntality of the class at the beginning and end of its experience at Dickinson and indicates where the college press is greatest on all its students.

It will be noted first that the Class of 1960 was normal in all respects except that it consisted for the most part of very intelligent young people—a fact already known by the Admissions Office before they arrived. But the senior profile is markedly different as a result of significant changes that had occurred in the meantime.

Where was the college press most effective? Those Factors bearing an asterisk had changed significantly (.05 level) while those with a double asterisk had changed very significantly (.01 level). The most significant change of all occurred on Factor E (submissive, mild, obedient, conforming vs. dominant, assertive, independent-minded, self-assured). There can be no question as to whether Dickinson College students become more assertive, independent-minded, self-assured over a four year span. They do. The change is probably a result of the overall college community press rather than a result of subcultural influences.

It is known that dominance is somewhat higher in established leaders than in followers, and is associated to some extent with social status. Groups averaging high on this dimension of personality show more effective participation in democratic procedure and fare better in occupations requiring courage. (Raymond B. Cattell and Herbert W. Eber, *Handbook for the Sixteen Personality Factor Questionnaire*. Champaign, Illinois: The Institute for Personality and Ability Testing, 1957, p. 12.)

The next greatest change occurred on Factor Q₁ (conservative vs. experimenting, critical, liberal, analytical, free-thinking). The Class of 1964 ranked slightly above average on this factor when it arrived at



Dr. Howard L. Rubendall, President of the College, and the Dickinson debate team, recent victors in a tournament at East Stroudsburg with a near clean sweep of first-place prizes, examine two of the trophies. Arthur Krauss, right, is the team captain. Others are Thomas W. Scott, coach Harry Cawood, Carlisle attorney; Paul R. Beckert and Barry W. Lynn.

Dickinson in 1960, but registered well above average by the end of the senior year. Women were relatively higher than men on early and late scores, and made a larger gain. The science curriculum contributed much more heavily to this change than the humanities, and fraternity membership somewhat more than independent social status.

The most pronounced gain was made by fraternity science majors of both sexes. Smallest gain was made by fraternity men in the humanities. Highest early and late scores were made by fraternity science majors (men). Obviously, the sciences attract the experimenting, analytical type of student, and further reinforce this trait.

Q_1 + persons tend to be better informed, more inclined to experiment, less inclined to moralize, more interested in "breaking the crust of custom and tradition and in leading and persuading people. Occupationally, it is high in executives and directors, progressive politicians, and, especially, in scientific researchers. It is low in priests, nurses, many semi-skilled and unskilled worker groups," according to Cattell and Eber.

The third greatest change is also worth special comment. Upon arriving at Dickinson, the group was average compared to the national sample on Q_2 , the dimension of group adherence vs. self-sufficiency. By the end of the senior year, the class mean had moved very significantly in the direction of self-sufficiency. Women outranked men on both early and late scores and made a greater gain. (In the national sample, men outrank women.)

The effect of the academic and social subcultures on the development of self-sufficiency in students is not

clear except in the case of A.B. women, who show the greatest gain. Highest ranking subgroups on both early and late means are independent male and female science majors. Only one subgroup, sorority science majors, showed a loss in mean scores, regressing from high average to the mean of the national sample.

The fact that Dickinson is known as a "fraternity college" suggested the initial hypothesis that the class as a whole might move in the direction of group adherence over the four year period. The hypothesis turned out to be wrong, since the change was very significantly in the other direction—towards self-sufficiency. Apparently this change is the result of the over-all college press rather than of the influence of any special subculture. Occupationally, Q_2 is very high for executives and scientists, low for persons who go along with the group, seek social approval, want to be conventional and fashionable.

When the profiles in Fig. 1 were presented by the writer to Dr. Herbert Eber, an associate of Dr. Cattell, for his interpretation, he examined them thoughtfully for a moment, then smiled and exclaimed, "Splendid! College kids grow up!"

Thus we have here indisputable scientific evidence that Dickinson College is a potent environment in which young people may learn and grow. It may be the first time in educational history, in fact, that a college president or dean can provide scientifically valid answers to questions by anxious parents who inquire what the college will do to their sons and daughters besides increasing their store of knowledge. For an institution seeking to raise large funds to support its existence, the data from this study should constitute powerful argument for its liberal support.

16 Personality Factor Test Profile

Standard Ten Score (STEN)

FACTOR	Mean Sten Score		D	F	Low Score Description	Standard Ten Score (STEN)										High Score Description
	1960	1964				1	2	3	4	5	6	7	8	9	10	
A	5.52	5.66	.14	3.05	Reserved, Cool, Detached	Outgoing, Warmhearted, Participating
B*	6.42	6.84	.42	5.87	Lower Scholastic Capacity	Higher Scholastic Capacity
C	5.70	6.03	.33	2.64	Emotionally Less Stable	Emotionally Stable, Faces Reality
E**	5.53	6.71	1.18	37.77	Mild, Conforming (Submissiveness)	Assertive, Independent (Dominance)
F	5.45	5.69	.24	1.21	Sober, Taciturn (Desurgency)	Enthusiastic, Heedless (Surgency)
G**	5.62	4.98	-.64	9.35	Expedient, Low Superego Strength	Conscientious, Staid, High Superego Strength
H	5.41	5.45	.04	.01	Shy, Restrained, Diffident	Venturesome, Socially Bold, Uninhibited
I**	5.40	4.79	-.61	9.10	Self-reliant, Realistic	Dependent, Overprotected, Sensitive
L*	5.69	6.15	.46	5.13	Trusting, Adaptable	Hard to Fool, Suspicious
M	5.72	5.41	-.31	2.25	Practical, Careful, Proper	Imaginative, Careless of Practical Matters
N*	5.41	6.05	.64	6.32	Artless, Natural, Sentimental	Shrewd, Calculating, Penetrating
O*	5.47	5.06	-.41	4.34	Placid, Confident, Serene	Apprehensive, Troubled, Depressive

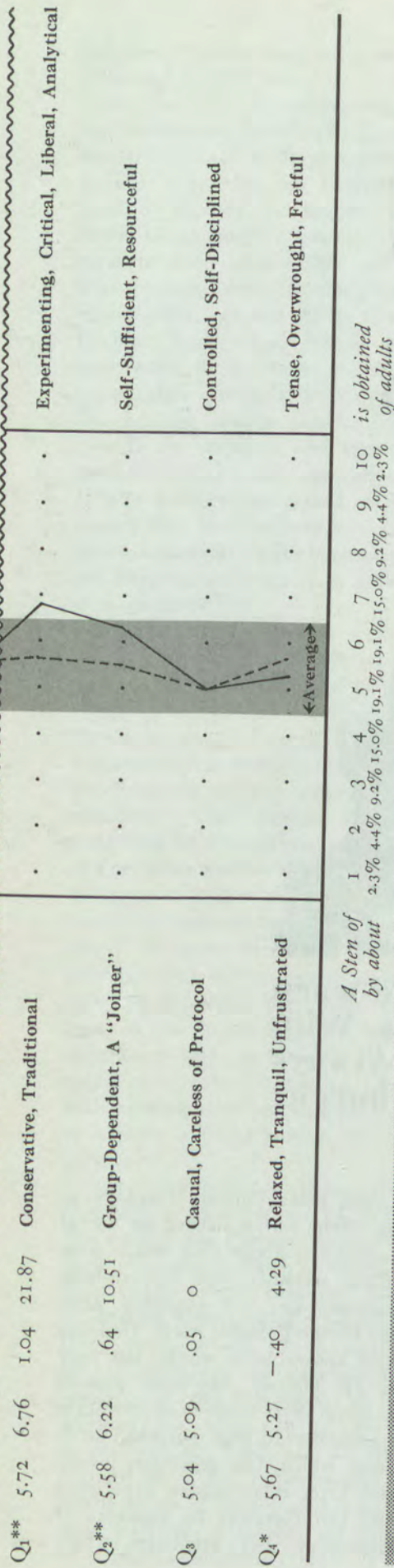


FIGURE 1. PERSONALITY CHANGES IN THE CLASS OF 1964 FROM SEPTEMBER, 1960 TO APRIL, 1964.

* Difference significant beyond .05 level ($F = 3.86$)

**Difference significant beyond .01 level ($F = 6.70$)

Samples consists of 189 "four-year persisters" (125 men, 64 women) who were given Form A of the 16 P.F. test September, 1960 and April, 1964.

ADDITIONAL EXPLANATION OF FACTORS AND COMMENTS ON FIGURE 1

The *Sixteen Personality Factor Questionnaire* was chosen because it represents the farthest advance towards the goal of providing the most complete information about personality in the shortest time. The test covers sixteen independent and psychologically meaningful dimensions of behavior, or common source traits, derived from more than twenty years of factor analytic research on normal and clinical groups. Its use does not limit the investigator to one or two aspects of behavior under the artificial restrictions imposed by laboratory conditions, as is true of the bivariate experimental method, to the neglect of other factors which may be much more important in accounting for behavioral similarities, differences, and changes within and between persons and groups. For the multivariate approach to personality

study afforded by the 16 P.F. test enables the experimentalist to analyze the total behavior or "personality sphere" into its structural parts.

Guided by the concept of personality sphere, the factor analyst, aided by computers, seeks to find out the minimum number of primary dimensions or source traits that comprise this sphere. The result of the work of Cattell and his associates has been to isolate a number of natural, unitary factor-dimensions, variation in value along which are determined a single, unitary influence or source—hence the term "source trait."

Figure 1 presents the sixteen most important common source traits arranged in descending order of contribution to variation in human behavior. (Actually, multivariate experimental analysis has now

yielded about twenty-five source traits.) Thus, source trait A (Factor A) loads behavioral difference more heavily than B, B more than C, etc., down to Q₄. All of these traits represent *universal, replicable* dimensions of personality that have been found experimentally at different age levels and across cultures—hence universal, by means of different methods of measurement such as ratings of observed behavior, assessment by performance tests, self-report methods, etc.—hence replicable.

The factors are psychological realities, mathematically derived and defined. The difficulty arises in trying to communicate their meaning to lay persons by means of language. Perhaps the best compromise is to present the factors in the form of a profile of bi-polar continuums laid off in standard

measurement units, as is done in Figure 1, with a low score and high score description for each factor.

Each factor is designated by a letter. The figures in columns 2 and 3 are the mean sten values for the entire sample ($N = 189$) as entering freshmen, September, 1960 and as seniors (April, 1964), respectively. Column 4 gives the value of the difference in means and Column 5 gives the value of the variance ratio found by applying R.A. Fisher's "F" test in the analysis of variance of the two sets of measures. An F-value of 3.86 indicates a significant difference at the five per cent level of confidence; an F-value of 6.70 indicates a significant difference at the one per cent level of confidence (*only one chance in a hundred that the difference in means is due to chance*).

GRAVEN IMAGES



Would You Believe That Image-wary Puritans Ornamented Gravestones With the Cross A Symbol Always Associated With the Roman Church?

Two major interests absorb Dr. Ludwig in this large and intricate book. One is the iconography and art history of the carved gravestones of early New England. The other is the place of these graven images in the life and thought of the Colonial Puritan (and, by extension, of the place of visual imagery in the life of all rational *homo religiosus*). Since interpretation can more easily be paraphrased than descriptive wealth, I shall begin with this second interest.

The initial question is how there could be any role at all for images among the apparently iconophobic Puritans. Guardians and celebrators of the radical transcendence of the Divine, the Puritans recoiled from exhaustive anthropomorphism, holding the making of sacred images a prime temptation to idolatry. Yet they recoiled as much from a complete agnosticism, fearing its expression among the faithful as arbitrary legalism or capricious emotionalism. Between these dan-

gerous poles Puritan Theology in its official forms insisted on verbal expressions about God which were taken seriously but as carefully mediate—i.e., not grasping after the Divine Presence itself. God was held knowable in words, but only as He Himself has been pleased to adopt certain outward attributes specifically to this purpose, attributes which, like goodness, justice and love, echo human experience and can therefore be elements of knowledge, but attributes which

reveal only God's back parts, as it were, and not His face.

Dr. Ludwig's major contention is that in Colonial New England, as in similar rational and iconophobic periods (like that of Hellenistic Judaism studied by his mentor, Erwin Goodenough), religious man turns to other images than verbal ones to taste more frontally and immediately, yet still safely, of the Divine. Such visual images can carry more of the Divine and do it more safely precisely because, as Dr. Ludwig quotes Goodenough, "words are exclusive and specific, symbols inclusive and suggestive." It was perhaps not a bad *modus vivendi* that the Puritans achieved between cautious clarity in theology and paradoxical intensity in graveyard imagery.

Essential to all this is a section tracing the twentieth century treatment of the generic notion of the symbol, of which the New England graven images are examples. Symbols are concrete and sensuous forms which stand for and exhibit the unknown. Characterized at the same time by the spiritual presence of The Other and by the embodied feeling of man, they mediate bodily the divine and the human to each other. In terms necessarily metaphorical and compositions necessarily paradoxical they give expression to intimations of both experience and aspiration which refuse to be mute, yet which cannot without blasphemy be made precise, or without anarchy remain wholly private.

Just such paradoxical, suggestive, metaphoric presentations of what was vital to the Puritans appear in their gravestone imagery, while in their public verbal theology they maintained their careful diplomatic language about God. On the stones God Himself can be supplicated; resurrection and salvation can be affirmed; and death can be known as real yet not final; and all this without the necessary parenthetical qualifications of discourse. A death's head harbours a resurrected soul, or is itself ambiguously both. The

triumph of death, sin, and time, is affirmed unmasked and unsentimentalized (as an unbelieving and effete twentieth century burial could not tolerate), yet celebrated in tension with an overcoming hope of redemption. The last trumpet sounds, the tree of life blossoms, a palm of victory adorns, and by the cross and wine the promise becomes concrete to all, disciples and thieves alike. And ancient angels and prophetic whorls speed the soul on its way to heaven.

All these symbolic elements are lavishly and meticulously identified, and illustrated in the author's own excellent photographs. So too is the progression of styles and artists from one place and generation to another. A distinctive rural style emerges, as authentic in its relative cultural isolation as the coastal style is, in its commerce with the world, responsive to every wind from Europe. Dr. Ludwig's own sophistication delights in the direct naiveté of this rural style, preferring its economy of line and directness of imagery, its taste for sacred stillness and geometric simplification, over both sentimental profusion and nascent naturalism. In a mood approaching real poignancy he mourns the destiny which took from this developing American vernacular style its shelter from the intercourse of nations and passing fashions.

This is an important and interesting book as a type as well as for itself and its own uniqueness. It essays an interdisciplinary approach to materials which would surely be malinterpreted by any unidisciplinary one. Only a sensibility attuned at once to historical theology and art history could have written it; and it is both well done and well to be done. Just here, however, I have a complaint. It is not that Dr. Ludwig marshals a great array of tools and materials to his task—in a sense, they presented themselves to him. This is the richness of interdisciplinary work. But it is that in fear perhaps of oversimplification in such a mass, he has compacted his sentences and paragraphs too much, adopting for this economy's sake, too much of the jargon of both disciplines, and making his main thought unnecessarily difficult to find and follow. Either a longer, more leisurely monograph, or more discipline in limiting the intricacy and depth of analysis, might have minimized these compactations. I must confess also that, in so elegant a book, a few odd metaphors and inelegant locutions induced a wince from time to time. Yet, if these things had not been so, I might perhaps have had *too* spontaneous and immediate, indeed, symbolic, an experience in the book, and that would have jeopardized its equally discursive and cautious intent.



Teweldeberhan and Teweldemedhin

Reminded of Alice in Wonderland?
It's Adi Ugri Eritrea in Ethiopia



Students dancing at the slide party we gave. The UCLA sweatshirt belongs to another volunteer here and was serving as a shamma.

by Mary Gratiot, '66

"Americano! Americano! . . . Se'el ahne, se'el ahne." (Take my picture.) This is the cry I hear everyday as I ride my bicycle to school or ride my horse to a village.

I am teaching school in Adi Ugri Eritrea, the northernmost province of Ethiopia, which borders on the Red Sea. Living and teaching here is quite different than in the United States, and quite enjoyable.

The school I teach at has 1150 students, grades seven through eleven, and fifty teachers. Next year twelfth grade will be added. Among the teachers are seven other Peace Corps Volunteers, two Indian teachers, and two national service teachers. The national service teachers are students between their third and fourth years at Haile Selassie University in Addis Ababa. Among the rest of the faculty, one teacher and

the headmaster have B.A. degrees; some have finished twelfth grade; some have not.

I am teaching science (biology, chemistry and physics) to 108 eleventh grade boys. There are four eleventh grade classes, each meeting seven times a week. The schedule I teach by is different every day of the week—sometimes I have one class three times before I have another one. The material

I teach is of the same level as in American high schools. However, the majority of the students don't learn as much of it as American students do. Fifty per cent is passing, and a student need pass only four of his six courses to pass the grade. So a student could fail two subjects every year and still get to twelfth grade. Last semester, the students took their six examinations in two days—and each test counts sixty per cent of the final grade. Students who fail three subjects are sometimes given re-examinations, which are usually very easy. At the end of twelfth grade, students take the Ethiopian School Leaving Certificate Examination in all subjects, which is quite difficult, and which few pass. If a student scores high enough, he is automatically admitted to the University.

The school is located two kilometers from the town. Most of the teachers and a few students ride bicycles; the rest walk. The school compound consists of eight buildings, which have quite a history. They were originally an Italian school. During the World War II, the Italians converted the school first into a medical supply center and small hospital, and later into a prison for British soldiers. Still later in the war, the British imprisoned the Italian soldiers there. Finally, after the war, the British reconverted it into a school. Recently, the Ethiopian Ministry of Education has made it into a junior-senior secondary school.

Six of the eight buildings contain eight or ten classrooms each; one is a hall and a woodshop, and the last contains the library, staff room, headmaster's office, infirmary, and a large, empty "science laboratory." The classrooms are about half the size of the average American high school classroom. Each has two windows, with shutters—the only light source. In the early morning, there is the choice of blinding sunlight or total darkness. There is one light bulb suspended from the ceiling in each room, which goes on during the rare occasions when the school generator is started to show a film. At the front of each room is a small blackboard, about two-and-one-half by five feet; most of these are cracked or need resurfacing. There are about thirty students in each class, and the students sit two at a desk, except for the eleventh grade, which now has individual desks. However, due to lack of space, two students have their desks

pushed together anyway. This makes it necessary to give two tests—to alternate rows.

The school day begins when one of the janitors rings the bell—an old gas cylinder—hanging from a tree. The students line up, then file into class. The students stay in the same room all day long, except for their weekly sport and library periods, and the teachers move around to the different classes. There are eight forty-minute periods each day—five in the morning and three in the afternoon. The morning session runs from 9 A.M. to 12:30; the afternoon, from 2:30 to 4:45. There are breaks in both morning and afternoon, when the teachers have tea.

All my students are tri-lingual. Their instruction is in English. They also study Amharic, the national language. And their native language is Tigrinya. Some also speak Arabic or Italian. Other than languages, their courses are mathematics, science, geography and history, every year; and in certain grades, agriculture, wood shop, domestic science or art.

I am mimeographing all my lessons, because of lack of text books. The Peace Corps provides us with a machine, and unlimited paper, ink and stencils. The school received 140 British physics books, which are too difficult for the students, and sixty chemistry books, which are really lab manuals, and useless with no laboratory. The school also has twenty-five American biology books, gift to the high school of a former Peace Corps Volunteer. I distributed them—about five students to one book—and the students fight over them constantly.

One of the main problems in teaching is the students' habit of memorizing everything. They memorize (sometimes incorrectly) the sheets I give them, often not understanding what it means, and then answer examination questions with the memorized material, all or part of which is usually irrelevant to the questions asked. The most trying thing in class is answering the same questions five times in a row—and I have four classes. Sometimes I just refuse to answer; other times I call on the student who previously asked the question to answer it. In their pre-Peace Corps teacher days, the students

"How do you
Explain Disneyland
to someone
Who has never heard
of
Donald Duck?"

were accustomed to copying material off the blackboard during class, and memorizing it at home. Now that they are given sheets, they don't know what to do in class; listening to the teacher's explanation is difficult for them.

Most of the students do study very hard. Some work so hard, I don't see how they can possibly do as poorly as they do. Of course, there are some who do very little work. And some who do very well, too. Many of them are fighting to stay in school, either because they can't afford pen and paper, or because their parents don't want them to go to school. Some of my students have after-school jobs. One teaches the older men in his village to read and write, five nights a week, two hours each night. Many have to help their families in the fields, before and after school, often getting up while it is still dark.

The ages of my eleventh graders range from seventeen to twenty-three. Actually, many do not know how old they are. A few are married, because their parents have forced them, but this is supposedly kept secret from the school. There are few girls in the school—and none in the eleventh grade. The Tigrinya names are really something to



Myself with some children in Adi Ugri. In the background are tukuls.

get used to. In my classes are Ghebregziabier Woldeghebriel, Tesfamael Goitom, Tzehaie Tzegai, the twins, Teweldeberhan and Teweldemedhin Ghebreandrias—remind you of a poem from *Alice in Wonderland*?

Some of my students walk to Adi Ugri from their villages everyday—up to fifteen kilometers a day. Others stay in a rented room in town during the week and walk to their villages on weekends. And some live so far that they go home—by foot, bus or bicycle—only once a month or less. They may bring a month's food supply from their villages. One group of eight students rents a room which is just big enough for their four cot-size beds and their one-cubic-foot charcoal stove, on which they do their cooking. Many students have no electricity (or maybe just a fifteen-watt bulb), so they study under the dim fluorescent lights on the main street. During examination week, students study after school along the road out of town—they would probably have to work if they went home.

Few students have more than two sets of clothes—some only one set. Rare is a clean undershirt! Most of them wear long pants, but some wear shorts (even the patches are patched). Most wear cotton shirts, a few wear sweaters; and most have some kind of jacket. Shoes vary, from sandals made of old rubber tires, to plastic, which come in three styles, to Red Chinese sneakers. A few have Italian shoes; a few have no shoes.

The town of Adi Ugri has a population estimated between ten and seventeen thousand. The main street is over a kilometer long and has cement, row houses, mostly painted yellow. One

section has stick huts; another part has the traditional *tukul*, a round hut of sticks or stone, with a pointed, thatched roof. Adi Ugri is famous among Peace Corps Volunteers for people standing in the street. On Saturday, market day, and Sunday, it is really crowded. Herds of goats and cattle, donkeys loaded with almost anything—wood, grass, charcoal and tin roofing—and camels come through the town frequently. And this is the road which links Asmara and Gondar, two of the nation's leading cities!

The market is quite large. One area is the grain market, with many, large scales. Another area has potatoes, onions, spices, and other vegetables in season. There are lots of shops—many tailors, bars and tea shops. Also, a butchery and a bakery. Bargaining in the market is fun, but time consuming, and a student who lives with us does most of the shopping in town, since he gets things cheaper.

The climate is marvelous! Warm and sunny every day, and cool at night. I haven't experienced the rainy season yet—which is summer—but I'm told that it is the coolest season. The dry season is quite dry—it never rains—and things get progressively browner and dustier. There are many kinds of beautiful, strange birds, which eat our grapes and peaches. Also, all kinds of flowering bushes and trees—many bloom year round. On moonlit nights, it seems very bright—and without the moon, very dark. I spent one night in a village—I never knew it could be so dark! The atmosphere is very clean, and I enjoy finding new constellations with my star map, courtesy of Dr. Yeagley. (Dr. Henry Yeagley who designed our Bonisteel Yeagley Observatory.)

On weekends and after school, I frequently ride my horse to villages. Ethiopian horses are generally small; but my horse does go fast, and he does provide transportation. Many villages have only a path which may be too rocky for bicycle riding.

When I ride, of course, I must wear jeans. I'm sure some of the villagers wonder if I'm male or female. I'm frequently invited in for tea or coffee—or both—and bread. The coffee is really good—stronger than American coffee, but not at all like European coffee. They begin to make it by roasting the beans

over the fire. Then they mash the beans, and put them with water in a small, round pot with a long, narrow neck, over the fire. Sugar is put in the tiny cups before the coffee is poured.

Several times I have visited my students families. If they know I am coming ahead of time, a real feast is prepared—they may kill a chicken. The most common food is *ziginy*—similar to Campbell's vegetable-beef, but with lots of *berbera*, which is hot pepper. At first my eyes would water and my nose would run when I ate *ziginy*, but now I'm used to it. It's a really good! *Ziginy*—and many other foods, too—is poured over a stack of *injera*, huge round bread, about the size of a large pizza crust. *Injera* is made from *teff*, and is quite sour when eaten alone. The *ziginy* and *injera* are eaten with the right hand. Before eating, the oldest man tears a piece off the *injera* and passes it to each person. Everyone eats out of one dish, which is placed on a small "table," a basket. The common drink in the villages is *suwa*, which is sometimes good, and sometimes like muddy water.

Students frequently visit our house. The Ethiopian teachers criticize us for this, but I really enjoy talking with my students informally. Several weeks ago, we had a slide show of the United States for about thirty students. Imagine trying to explain Disneyland to someone who has never heard of Donald Duck! After the slides, one student played my recorder, and others danced. Ethiopian dancing is done in a circle, everyone moving around—it's quite disorganized. The main movement is in the shoulder, something I haven't mastered yet. While dancing, a *shamma*, the traditional stole, or some substitute, must be worn. Anything will do—a towel, jacket or sweatshirt. After this, I put on some Beatle music—some of the students twist very well. Since there were no girls, the boys danced together. (Ethiopian girls seldom dance, traditional or otherwise, since they are so shy.) Boys dancing together is not at all out of the culture, since they hold hands frequently and kiss on meeting.

Many things seemed strange at first, but after becoming accustomed to them, they seem perfectly normal. After returning home, I'm sure I'll miss Ethiopian food. All the people here are so warm and hospitable. Life goes on at a slow, enjoyable pace. At times things may seem boring—but a new experience always follows soon.

Roster of Life Members of the General Alumni Association

The following Dickinsonians have become life members since publication of the Fall 1966 *Dickinson Alumnus*:

Ray Patton Smith, '11
Harold StC. Carter, '18
In Memory of
Agnew Roorbach, '20
(by Dr. Arthur B.
Shaull, Jr., '38)
Sarah McCrea Jones, '21
Anne Coover Thompson, '27
W. Robert Thompson, '27

George T. Reed, Jr., '29
Donald S. Himes, '31
Herman Berg, III, '34
Madeleine Lynch McIntire, '35
J. William Bailey, '38
William T. Nelson, '41
Edwin E. Lippincott, '44
In Memory of
Norman Conrad Watkins, '44
(by Mrs. Elizabeth Watkins)

Neal D. Bachman, '48
Ruth Stopford Murphy, '48
Thomas W. Davis, '50
Michael J. Levitt, '52
Donald L. Masten, '53
Suzanne Ruggles Dates, '55
Dr. Edward R. Gilbert, '57
John H. Gould, M.D., '57
Edna H. Jones, '60
Carol Christiansen Frey, '61

L. Emily Grimm, '61
Stephen M. Courtland, '63
Ann Conser Curley, '63
Hans P. Frese, '64
James E. Gauntt, '64
Richard R. Hoffman, Jr., '65
Richard Hosteley, '65
Charles H. Lippy, '65
Charles D. Ulmer, '65

The total number of life members in the General Alumni Association is now 2378.

THE TOP TEN CLASSES

1950	86	1934	60
1948	70	1929	60
1935	61	1951	58
1927	61	1952	56
1939	60	1931	56

1866
*Dr. Charles W. Super
1867
*Samuel Quinton Collins
1870
*Judge Edward W. Biddle
1872
*Robert H. Conlyn
1873
*Dr. Ovando B. Super
1874
*C. H. Ruhl
1876
*Rev. George A. Cure
1878
*Dr. Edward S. Conlyn
*Dr. James H. Morgan
1879
*Dr. Harold H. Longsdorf
1880
*James Hope Caldwell
*Dr. J. Warren Harper
*Charles K. Zug
1881
*Dr. Persifor M. Cooke
*Rev. Dr. Frank D. Gamewell
*Edwin H. Linville
1882
*Lemuel T. Appold
*Peyton Brown
*James Reaney
1883
*John M. Rhey.
*Dr. Alexander A. Sharp
*Deceased

1884
*Dr. M. Gibson Porter
1885
*Dr. Franklin T. Baker
*Joseph M. Cummings
*Brig. Gen. Frank R. Keefer
*Alpheus S. Mowbray
*George F. Pettinos
*Dr. Guy Leroy Stevick
1886
*C. E. Bikle
*Judge Edward M. Biddle, Jr.
*W. W. Salmon
1887
*Dr. William Evans Bruner
*Dr. Eugene Chaney
*Dr. W. Blair Stewart
*Rev. James B. Stein
1888
*William D. Boyer
*Rev. Curwen B. Fisher
*Robert A. Heberling
1889
*Mrs. Alice K. Meloy
*W. W. Wharton
1891
*Prof. W. W. Landis
*A. Elizabeth Low
*Dr. C. William Prettyman
*Rev. Dr. Harry B. Stock
1892
*Dr. A. C. McCrea
*Charles E. Pettinos
*Rev. Joseph H. Price
1893
*Clarence Balentine
*J. Henry Baker

*Joseph Bosler, Jr.
*William M. Curry
*Dr. Thomas H. Evans
*Dr. Mervin G. Filler
*Dr. Clyde B. Furst
*Grace W. Goodyear
*George Metzger Hays
*J. Banks Kurtz
*George W. Kessler, Jr.
*Robert E. MacAlarney
1893L
*George W. Huntley, Jr.
1894
*Dr. William H. Ford
*Raphael S. Hays
*Norman Landis
*Rev. Hedding Bishop Leech
*Rev. D. Albert E. Piper
Dr. John Stoops
*Judge William W. Uttley
1895
*Paul Appenzellar
*William C. Clarke
*Miss Amy Fisher
Mary Rebert Ford
Rev. John E. McVeigh
*Robert H. Richards
*Fred S. Stitt
1896
*James L. N. Channell
*Rev. Dr. Wayne Channell
*Dr. John R. Edwards
*Charles T. Evans
*Admiral Arthur J. Hepburn
*Howison E. Hoover
*Merkel Landis
*Harry L. Price
*Bishop Ernest G. Richardson
*Anna Isenberg Richardson
*Robert J. Shearer
*Ruby R. Vale
*John S. T. Wilcox
*Mary A. Wilcox
*Dr. Charles E. Zeigler

1897
*Rev. Dr. Leon Chamberlain
*Frank C. Cheston
*Rev. Richard N. Edwards
*Lieut. Gen. S. D. Embick
*Anna Geiger Heckman
*Rev. Dr. Edgar R. Heckman
*Dr. David W. Horn
*Rev. Dr. L. Clarence Hunt
*Helen Horn Jordan
William A. Jordan
*James B. Kremer, Jr.
*Samuel H. Miller
*Rev. James J. Resh
1898
*Rev. Harry P. Grim
*H. C. Lowther
*Howard E. Moses
*Prof. Leon C. Prince
Rev. Robert E. Roe
*Robert Hays Smith
*Dr. Edmund D. Soper
*Rev. J. Ross Stonesifer
*Lewis P. Wingert
1899
*Donald C. Appenzellar
*Harry L. Cannon
*Prof. Forrest E. Craver
*Rev. Dr. W. V. Mallalieu
*Rev. Otho C. Miller
*Stanley D. Shipley
*Thomas M. Whiteman
1900
*Elbert V. Brown
*Cyrille S. Frank
Harriett Spangler Shelley
Boyd Lee Spahr
*Rev. Henry E. Walhey
*Rev. Albert M. Witwer
1900L
*L. P. Coblentz
1901
*Prof. John D. Brooks

Elizabeth M. Craighead
 Rev. Dr. Edwin F. Hann
 *Thomas L. Jones
 *Josephine Brunyate Meredith
 *George W. Pedlow
 *Maj. Gen. Thomas M. Robins
 *Roy Mead Strong
 *John Perry Wood

1901L

*L. Floyd Hess

1902

*Edwin C. Ammerman
 *Lewis M. Bacon, Jr.
 *Dr. S. Luther Bare
 *Dr. William W. Betts
 *Edith Cahoon Bolte
 *William Derr Burkey
 *Ethelyn H. Cleaver
 Dr. Mary Love Collins
 *Rev. Robert H. Comly
 S. M. Drayer
 *Harry L. Dress
 *E. Garfield Gifford
 *William H. Hake
 *Myron B. Hockenberry
 Dean M. Hoffman
 *Dr. Clark D. Lamberton
 *Rev. Dr. Frank D. Lawrence
 *Joseph W. Milburn
 *Dr. D. Walter Morton
 *Rev. William E. Myers
 *Reuben F. Nevling
 Carl F. New
 *Harry E. Odgers
 *Dr. Richard Radcliffe
 *Florence P. Rothermel
 *Dr. Wm. C. Sampson
 *William A. Shomo
 Dr. Warren N. Shuman
 *General James G. Steese
 Kathryn Kerr Williams

1903

*Beverly W. Brown
 *Amos M. Cassel
 May H. Chrostwaite
 *Paul T. Collins
 *Charles S. Evans
 *Rev. Arthur C. Flandreau
 *Dr. Frank Porter Flegel
 *William G. Gordon
 *Elmer T. Grove
 *Merrill James Haldeman
 *Lloyd W. Johnson
 *Dr. David D. Leib
 *Rev. Harry F. Pemberton
 *Dr. Daniel P. Ray
 *Theodore D. Sloat
 *Bishop Robert N. Spencer
 *Robert B. Stauffer
 Dr. J. Roy Strock

1903L

R. M. Wright

1904

*William Hannold Cheesman
 *Judge E. Foster Heller
 Grace W. Hollingsworth
 Ivo V. Otto
 *Lemon L. Smith
 *Capt. John Zug Steese
 Rev. William E. Webster

1905

*Edna Albert
 *Gertrude Heller Barnhart
 *Edward M. Biddle
 *Abram Bosler
 *Anna Frank Brandt
 *Florence H. Bursk

*George W. Cass
 Clarence L. Dum
 *Dr. James Edwin Dunning
 *Willis C. Esbenshade
 *Benjamin Hinchman, Jr.
 *Dr. Edwin Charles Keboch
 Kent C. Nicodemus
 *Rev. Elmer E. Pearce, D.D.
 William H. Rogers
 Earl M. Roush
 *Rev. J. Edgar Skillington
 Anna J. Spears

1906

*Mary Mosser Bassler
 *Dr. Pierce Butler
 Helen Smith Harris
 *Dr. Gilbert H. Jones
 Dr. Dayton E. McClain
 *James H. Martin
 John R. Milburn
 *M. Scott Myers
 Harry H. Nuttle
 Harry M. Scarborough
 *Dr. Herbert N. Shenton
 *Dr. J. I. Tracey

1907

Florence Ralston Belt
 *Alfred K. Brandriff
 George M. Briner
 Charles B. Derick
 *Ralph Ebbert
 *H. Walter Gill
 *George Ross Hull
 *Charles M. Kurtz
 *Edson J. Lawrence
 *Elmer T. McCready
 Leon A. McIntire
 Mary A. Ranck
 Robert F. Rich
 Dr. Lewis Guy Rohrbaugh
 Ida Gaul Shepler
 *Col. Charles M. Steese
 Mary Hoover Steese
 *Allan D. Thompson

1908

Tressa Greenwald Banks
 Karl H. Bergey
 *Benson B. Boss
 Lillian O. Brown
 Hon. Herbert G. Cochran
 *Dr. Elbert M. Conover
 Lida M. Ebbert
 Laura H. Ellis
 *Dr. Roscoe W. Hall
 Dr. Maurice E. Heck
 Abram M. Hess
 Theodore C. Jones
 *Dr. George H. Ketterer
 Frank C. Nicodemus
 Annie R. O'Brien
 Ruth Rinker Shearer
 Charles K. Stevenson
 *Dr. J. Merrill Williams
 Hugh B. Woodward
 Helen K. Woodward

1909

*Elvey S. Bailey
 Austin A. Banks
 *Elizabeth H. Blair
 W. Grier Briner
 *Dr. C. J. Carver
 *J. Roland Chaffinch
 *Joseph P. Demaree
 *T. H. Grim
 Dr. W. Carlton Harrison
 *Fred R. Johnson
 Deborah Hock Kreider
 Charles Langstaff
 *Linette E. Lee
 Dr. J. Clair McCullough

Benjamin W. McFarren
 *Ellsworth H. Mish
 *Prof. May Morris
 *Charles A. Philhower
 Chole Shutt Wagner
 *C. Raymond Young

1910

*Anna M. Bacon
 In Memory of G. Harold Baker
 Albert M. Bean
 *L. Creston Beauchamp
 *Rosannah G. Blair
 *Dr. Henry Darlington
 Blanche L. Dum
 Walter V. Edwards
 A. Grace Filler
 Rebecca Craighead Findlay
 Lydia M. Gooding
 *Jack T. Gougler
 *Lina M. Hartzell
 Rev. Albert G. Judd
 *Arthur J. Latham
 Henry Logan
 Marjorie L. McIntire
 Hewlings Mumper
 DeLancey Pelgrift
 Harriet S. Poffenberger
 Judge Karl E. Richards
 Dr. E. Roger Samuel
 *Clarence M. Shepherd
 Jeannette Stevens
 Dr. Joseph S. Vanneman
 *George H. Wardrop

1911

Charles S. Briner
 J. Leeds Clarkson
 *Roy Cleaver
 Blanche Galley Cowden
 *J. Ernest Crane
 *Bertha G. Gates
 Chester C. Holloway
 *James P. Hopkins
 Prof. Charles F. Kramer, Jr.
 Thomas B. Miller
 Dr. Karl K. Quimby
 *Vaughn T. Salter
 *Albert C. Shuck
 *Prof. Henry E. Smith
 Ray Patton Smith
 *Rev. Gordon A. Williams

1911L

Bayard L. Buckley

1912

Mary Jenkins Adamson
 *Col. A. H. Aldridge
 *Ruth Heller Bacon
 William M. Beard
 Roscoe O. Bonisteel
 Helen Garber Bouton
 Dr. Charles C. Bramble
 Clarence A. Fry
 *Willis K. Glauser
 Edna M. Handwork
 *David A. Henderson, Jr.
 *Dr. Charles W. Kitto
 Thompson S. Martin
 Marguerite Deatrick Miller
 Dr. Robert E. Miller
 *S. Carroll Miller
 *Norris Mc. Mumper
 John E. Myers
 *George M. Raines
 *Paul R. Renn
 Murray H. Spahr
 S. Walter Stauffer
 *Edwin D. Strite
 Glenn E. Todd
 Bessie K. VanAuken
 Charles S. VanAuken
 Romaine Singiser Wert

1913

*Col. Fred H. Bachman
 *Miriam W. Blair
 Edith Rinker Bramble
 *Allan F. Bubeck
 Dr. Milton Conover
 Hazel Kisner Fasick
 J. Cameron Frendlich
 Elisabeth M. Garner
 *James H. Hargis
 *Carl Hartzell
 Homer C. Holland
 Horace L. Jacobs, Jr.
 Martha L. Johnson
 *Dr. Earl S. Johnston
 *Crawford N. Kirkpatrick
 Julia Delavan Laise
 *Clara J. Leaman
 *B. O. McAnney
 John V. McIntire
 *George A. Potter
 *Col. C. M. Reddig
 C. Merle Spangler
 *George M. Steese
 *P. Earl West

1913L

A. E. Kountz

1914

*John C. Ahl
 *Lee Roger Allen
 Rev. L. W. Auman, D.D.
 Rachael S. Beam
 Ruth H. Bigham
 *E. Grace Brame
 Foster E. Brenneman
 Frank C. Bunting
 Mabel Krall Burkholder
 David Cameron
 Joel Claster
 Rev. Charles C. Cole
 Francis A. Dunn
 Carlyle R. Earp
 George W. Emmert
 Dr. Thomas H. Ford
 Rev. Elmer L. Geissinger
 Dr. Cora L. Handwork
 *Dr. Walter A. Hearn
 Rev. Frank Y. Jagers
 Helen R. Langfitt
 *Margaret Thompson McAnney
 *J. Freeman Melroy
 Rev. William H. Robinson
 Emory Rockwell
 Eugene C. Shoecraft
 *Wilson P. Sperow
 *Clinton D. VanSiclen
 Mary Coyle VanSiclen
 Dr. C. E. Wagner
 *William M. Waldman
 Clyde M. Williams
 *Francis G. Wilson
 Maude E. Wilson

1915

*Everett E. Borton
 Dr. Arthur A. Bouton
 *Phyllis Mason Bowmar
 *Rev. Elliott C. B. Darlington
 Dr. William W. Edel
 William L. Eshelman
 *Rev. Robert C. Gates
 Hyman Goldstein
 *Leonard G. Hagner
 Lester S. Hecht
 J. Frank Hollinger
 Elizabeth Howard
 Donald E. Jefferson
 *Dr. R. B. Kistler
 Rev. James E. Leaman
 Russell R. McWhinney
 *Gilbert Malcolm
 *Helen Bucher Malcolm
 *William R. Mohr

*Deceased

*Hugh C. Morgan
Helen B. Neyhard
J. O. Small
Roger K. Todd
David M. Wallace
Dr. Howard B. Warren
Chester Watts
Stanley G. Wilson
Dr. Ethel Wagg Zimmermann
Dr. G. Floyd Zimmermann

1916

Albert H. Allison
Amelia W. Blumenfeld
*Mabel V. Bucher
*Anna Mohler Ermold
Robert L. Ganoe
*G. Dickson Garner
Rev. Thomas R. Jeffery
Helen Lauman Judson
Reynolds C. Massey
*Raymond S. Michael
J. Frank Puderbaugh
Herbert S. Reisler
*Charles H. Reitz
*D. Paul Rogers
*George S. Southwick
*Sylvia L. Watts
Anna Shuey Whiting
W. Barton Wise

1916L

Joseph Altman

1917

Oris J. Baker
*Ethel Schellinger Bailets
Dr. Robert P. Banks
Ralph M. Bashore
*James G. Brookmire
Bishop Fred P. Corson
*Berkley Courtney
Francis H. S. Ede
*Dr. O. J. Eichhorn
Mervin G. Eppley
*Marion G. Evans
*Jacob M. Goodyear
*W. F. Greenig
*Shuman Hart
*George C. Hering, Jr.
*George V. Hoover
*Christian P. Humer
Florence B. Hutchison
Helen B. Jones
*Mary Bobb Karns
Dr. Earl C. Lyon
Mary Dougherty MacGregor
*Rev. Joshua B. McCabe
James C. McCready
Prof. Douglas S. Mead
*Max I. Mechanic
*Gladys W. Meredith
Dr. Nora M. Mohler
*Dr. Roy W. Mohler
Robert L. Myers
*Rev. John W. Quimby
Homer M. Respass
*H. Delmar Robinson
Christine S. Ritter
David Sharman, Jr.
Carl B. Shelley
*Frank L. Shelly
*Herman J. Shuey

Albert Strite
*Rev. Henry A. Rasmussen-Taxdal
Dr. John D. Trevaskis
Dr. Edwin D. Weinberg
*Agnes S. Woods
*Edmund G. Young

1917L

John H. Bonin
Henry M. Bruner

*Deceased

1918

Frank R. Adams
Dr. J. Murray Barbour
Rev. Charles F. Berkheimer
Dr. Harold H. Bixler
Harold StC. Carter
Mervin G. Coyle
*Dr. F. Donald Dorsey
M. Clare Filler
*Mary Minick Goodyear
*M. Wilson Harris
Paul L. Hutchison
Rev. George Compton Kerr
Mildred Price Lee
In Memory of Thomas W. Leshner
James H. McNeal
Frank E. Masland, Jr.
Dr. Merle I. Protzman
Clark D. Read
Rev. Herbert K. Robinson
*James B. Stein
Constance Springer Trees
John F. Walters
J. David Weidenhafer
Dr. Lester A. Welliver

1919

*Paul E. Beaver
*Marguerite Butler
M. Clare Coleman
*W. Miller Cook
Isabel K. Endslo
Thomas F. Fagan
*Gordon E. Fry, Sr.
Mark E. Garber
John W. Garrett
Ruth Kruger George
*Col. M. Brandt Goodyear
*Prof. H. G. Hamme
Elma May Houseman
Dr. Lester F. Johnson
*Dr. William G. Kimmel
*Richard W. Lins
Catherine E. Lobach
Dr. Edwin B. Long
Urie D. Lutz
*Lucetta E. McElheny
*Robert P. Masland
William E. Matthews, Jr.
*Thomas C. Mills
Robert E. Minnich
Dr. Rowan C. Pearce
Ira S. Pimm
Harry E. Simmons
Mariette Holton Stitzel
Fayette N. Talley
Dr. Ross Wilhide
C. Ross Willis

1920

Sadie Mindlin Aron
*John E. Asper
Charles A. Auker
Helen Purvis Blew
George H. Burke
Dr. Ray H. Crist
J. Rolland Crompton
Amy Brobst Douglass
Bernard Forcey
Robert M. Fortney
*Roxana M. Garman
*Dr. Ralph C. Hand
Rev. Harry S. Henck
Howard G. Hopson
Edgar P. Lawrence
Dale H. Learn
In Memory of William T. Long
Dr. Alpheus T. Mason
Dr. Edgar R. Miller
Rev. Ralph L. Minker
Martha M. Morrette
Katherine Riegel Mumma
Katherine Obermiller
Arthur M. Palm

C. Arthur Robinson
In Memory of Agnew Roorbach
(by Dr. Arthur B. Shaull, Jr.,
'38)
Helen Nixon Sanderson
*Horace F. Shepherd
Dr. Elwood Stitzel
*Dr. Russell I. Thompson
Ralph L. Young

1920L

Jack M. Cohen
*Abel Klaw

1921

*Dr. Andrew Blair
William E. Bretz
Evelyn Carr Chapin
Dr. Herbert L. Davis
*Dr. Horace Gledhill
Franklin A. Gray
Toshihiko Hamada
Margaret W. Hocker
C. Wendell Holmes
Kathleen LeFevre Horner
Sarah McCrea Jones
*I. Howell Kane
Homer L. Kreider
Rev. Edward G. Latch
Walter C. Lippert
Mildred Masonheimer Long
*W. Gerry Miller
John F. Morgenthaler
Dr. Calvin B. Rentschler
Ethel Riker Rickenbacher
*Phillips Brooks Scott
Dr. J. Paul Slaybaugh
Mildred Starnier Taylor
Anthony J. Vitoritto
*Frederick C. Wagner
Paul R. Walker
William M. Young
*A. V. Zimmerman
Ethel Eisenhour Zweifel

1922

Albert R. Berkey
Gladys G. Berkheimer
Agnes Albright Brown
Dr. Max R. Brunstetter
George C. Derick
Beulah M. Fair
Rev. Herbert W. Glassco
Dr. Lewis D. Gottschall
Dr. Albert M. Grant
*Helene Weisensale Karn
Judge John M. Klepser
Dr. Harry D. Kruse
Charles Donald Markley
Mary E. Noaker
John L. Pipa, Jr.
*Fleming B. Rich
*Dr. Raphael E. Rupp
Harry L. Stearns
Emelyn M. Trine
C. Elizabeth Watts
*Dr. Edwin E. Willoughby

1923

J. Edward Bacon
Mary Peterman Bare
Howard J. Carter
Ashbrook H. Church
Robert W. Crist
*Dr. Albert L. Demaree
Elizabeth M. DeMaris
Mary E. Frankenberry
Donald H. Goodyear
Leighton J. Heller
Dr. Florence M. A. Hilbish
Edith G. Hoover
Harold S. Irwin
S. Elizabeth Jones
Rev. Harold W. Keller
Alta M. Kimmel

Virgil M. Knowles
Esther Leeds
*Dr. Rowland R. Lehman
Ruth Booty Lins
Dr. William K. McBride, Jr.
Dr. Elizabeth Bucke Miller
Dr. William Mowry
Dr. Stanford W. Mulholland
Regis T. Mutzabaugh
Charles I. Richard
Dr. Carl E. Rothrock
Dr. W. C. Schultz
Helen E. Shaub
Francis Estol Simmons
*Frank G. Smith
Morris E. Swartz, Jr.
Mary Line Todd
Guy E. Waltman
Evelyn Wardle
Mary Garland Wark
Elizabeth Davis Wilkins
*Rev. Harry W. Witchey

1923L

Conrad A. Falvello
*C. Lloyd Fisher

1924

J. S. Bender
Lulu Tobias Boag
Charles W. Burn
Norman M. Eberly
Joseph R. Embury, Jr.
M. Elizabeth Filler
Anna Flo Geyer
Thelma E. Greene
*Raymond E. Hearn
Elizabeth C. Hench
Dr. F. Lamont Henninger
William H. Houseman
*Philip H. Johnston
Marion C. Keen
Dr. Janet A. Kelley
Sidney D. Kline
W. Randall Leopold
Esther Riegel Long
Ammon L. Miller
Ruth Jones Minker
Rose Buckson Moore
Ruth Bortz Raiford
Newton E. Randolph
Louise Sumwalt Richards
B. Floyd Rinker
Horace E. Rogers
Margaret Paul Sawyer
Walter H. E. Scott
Paul J. Smith
Helen Wilson Spatz
Dr. Harold L. Stewart
Elizabeth Morgan Stone
Frances Smith Vuilleumier
Dr. C. M. Wallace
Virginia Watts
Milton L. Weston
*Dr. John D. Yeagley

1924L

Florance Leeds Block
*Dr. Vashti Burr

1925

Anna Bennett Bennethum
Mary Evans Brasaemle
Erma Porteus Brock
Katherine Smith Carpenter
Rev. G. Custer Cromwell
George M. Davey
*Karl W. Fischer
Arthur M. Frock
Dr. Ralph E. Goodall
Rev. William Guffick
Thelma Nickey Hall
Dr. Edgar H. Hamilton
John M. Hamilton
Mary Knupp Hartman

*Hamilton H. Herritt
Elizabeth Hann Kirby
Eleanor Klemm
Dr. Marian B. Kolbye
Dr. Jacob A. Long
Norman W. Lyon
Col. Walter D. McCahan
Mary VanCamp McKeown
Dr. Gerald H. Miller
Wendell P. C. Morgenthaler
*Anna Makibbin Preble
Joseph A. Nacrelli
C. Norris Rabold
Donald G. Remley
Dr. A. Harvey Simmons
Helen Wiener Smethurst
Andrew J. Smith
*Douglas M. Smith
Herbert A. Solenberger
Carola Learned Stuckenrath
*Dr. Charles S. Swope
Edwin W. Tompkins
*Russell B. Updegraff
Rev. John W. Weise
W. Irvine Wiest
Clyde E. Williamson

1926

Dr. George H. Armacost
Dorothy Willits Balch
Nevin L. Bitner
Milton J. Buchannan
Louis Cohen
Clarence A. Cover
Dr. Alvin A. Fry
Helen Douglass Gallagher
Janet Harman Hartzell
Rev. Roy T. Henwood
Marion L. Herman
Solomon Hurwitz
Kenneth S. Jones
Florence H. Long
Rev. John W. McKelvey
Georgia Krall McMullen
Elizabeth Madore
*John W. Mahaley
Dr. John P. Milligan
Ruth Taylor Myers
Mary Read Oerther
H. Monroe Ridgely
Anne Hoyer Rupp
Charles F. Sampson
*Earl M. Schroeder
Dr. Leslie J. Schwalm
W. E. Shissler
John E. Shoop
Alma Moyer Sieck
Flora W. Smiley
Dr. Harry T. Smith
Roger H. Steck
Margaret S. Steele
Benjamin L. Stenger
Joseph S. Stephens
Marvin H. Tawes
Ralph Wallis
Isabel Ward Warren
Emma Brenneman Weaver
*Judge Charles S. Williams
Robert E. Woodside

1927

Rolland L. Adams
Paul C. BeHanna
Elsa Burkhard BeHanna
Dr. Alvin B. Biscoe
Helen Bowser Biscoe
Willard E. Bittle
Dr. W. Edward Black
*Theodore F. Bowes
Dr. John S. Bowman
Dr. Mary A. Brightbill
Kathryn Coulter Brougher
*J. Murray Buterbaugh
Elizabeth Wetzel Cover
Velva Diven Daihl

Dorothy Sponsler Dymond
Dr. J. Wesley Edell
Rev. Alfred C. Fray
Thomas R. Gallagher
Mary Rombach Gray
Nora Shank Harman
Elmer E. Harter
Rev. Edgar A. Henry
*Rev. John E. Holt
Isabelle R. Hoover
Charles F. Irwin, Jr.
Eleanor McCrone Jones
G. Harold Keatley
*Delbert T. Kirk
Gertrude E. Klemm
Leona Barkalow Kline
John S. Kreider
*Rev. Lloyd L. Krug
*James W. LaCoe
*Wendell J. LaCoe
Bishop John Wesley Lord
Martin F. Miller
Henry W. Monyer
Rev. J. Frederic Moore
Dr. Leslie E. Morgan
*Miriam Faust Muffly
Ruth Ely Nicholson
Thelma Atkinson Obert
Rev. Kenneth R. Perinchief
Burton L. Pinkerton
Moordeen Plough
Jeanne Morris Portmann
Louise Patterson Rowland
Walter A. Schlegel
Fred J. Schmidt
William M. Sheaffer
Walter P. Shuman
Lois Horn Silver
Irene O. Simes
Charles H. Sleichter
Alvah C. Small
Brewster B. Stearns
Anne Coover Thompson
W. Robert Thompson
*Dr. Myron A. Todd
Dr. Frances L. Willoughby
*Dr. Glenn W. Zeiders

1927L

Harry Rubenstein

1928

Rupert G. Appleby
Dr. Raymond M. Bell
Pamela McWilliams Berglund
*Addison M. Bowman, Jr.
Bernard Burr
Robertson C. Cameron
Dorothy Chamberlain
Frederick M. H. Currie
John A. Dempwolf
Chauncey M. Depuy, Jr.
Rev. W. Arthur Faus
Earl A. Forsythe
Carl W. Geiger
Mary P. Goodyear
*Ruth E. Goodyear
Dr. Joseph E. Green, II
Dr. Victor B. Hann
Dorothy E. Harpster
W. Reese Hitchens
Mildred E. Hull
Samuel Lichtenfeld
Elizabeth Rogers Littman
Louise A. Loper
Raymond A. Lumley
Donald J. McIntyre
M. Kennard Markley
Arthur Markowitz
*O. Dixon Marshall
Helen Hackman Martin
*Bishop William V. Middleton
Rev. F. Douglas Milbury
Helen McDonnell Neel
Paul D. Olejar

DeAlton Perigo
Margaret Slaughter Reese
Lillie Rhoads Rimby
Martha Green Sanford
Janet Forcey Schwartz
Walter Sidoriak
Elisabeth Cloud Silver
William R. Smith
Dr. Carroll C. Stauff
H. G. Stutzman
Howard M. Wert
Fairlee Habbart Woodside
Clare Yoder
Richard V. Zug

1929

Dr. Nathan Asbell
Aubrey H. Baldwin, 3rd
Lydia B. Betts
Hester Cunningham Boss
Lee M. Bowes
Dr. C. Richard Brandt
Chester Wm. Brown
Rev. D. Perry Bucke
*Edward A. Callaway
Blaine E. Capehart
Dr. Carl C. Chambers
Dr. C. Perry Cleaver
Elizabeth McCoy Cryer
Edith Fagan Davies
Rosana Eckman
*Peter M. Fludovich
Rev. Paul A. Friedrich
Elmer O. Goodwin
Velma Roth Gordon
Margaret C. Grimm
Earl A. Gunter
John N. Hall
Miriam Bell Hall
Henry E. Harner
Dr. E. Blaine Hays
Floyd A. Huey
Dr. Oliver A. James
Edwin G. Kephart
Janet Smith Kingsley
Bernice Barkalow Kirk
Rev. Harold C. Koch
Fred A. Lumb
Dr. John W. McConnell
*Frank G. McCrea
Elizabeth Pedlow Maginniss
Ray T. Mentzer
Frederick A. Miller
Rev. Paul B. Myers
Dr. J. Watson Pedlow
Rev. Foster B. Perry
Dr. James Morgan Read
George T. Reed, Jr.
Martha M. Reichard
*Dr. Kenneth E. Reynolds
Richard H. Rouse
Jesse B. Rubright
Evelyn Learn Sandercock
Edmund S. Snyder
Eugene R. Sowadski
Howard S. Spering
George E. Stabley
James A. Strite
Donald B. Waltman
Mary McCrone Waltman
Dr. W. Donald Whetsel
R. Wallace White
Helen Laird Winkler
*William B. Yeagley
Dr. F. J. Yetter
David M. Zall

1930

Lewis F. Adler
Dr. William D. Angle
George W. Atkins
Richard U. Bashor
Frances Comly Bear
Rev. Charles A. L. Bickell
C. Lincoln Brown, Jr.

Ruth Cain Conner
Miriam G. DeKeyser
Dr. Tobias H. Dunkelberger
Walter Gabell, Jr.
Alice E. Hackman
*Dr. Everett F. Hallock
John A. Hartzok
Dr. Edward Hoberman
Margaret N. Horner
Rev. Paul B. Irwin
William L. Johns
John F. Kelso
Rev. Rowland Hill Kimberlin
Harold A. Kline
Robert E. Knupp
Edgar J. Kohnstamm
Florence Shaw Kraeuter
Dr. E. S. Kronenberg, Jr.
Grace Hoffman Kuntz
Rev. Paul D. Leedy
Ada Kapp Lowe
Dr. Vincent A. McCrossen
*John J. Mangan
Miriam Horst Middleton
James K. Nevling
A. Caroline Nolen
James E. Nolen
Dr. Lewis H. Rohrbaugh
Gilbert Schappert
William C. Schultz, Jr.
Rev. Robert F. Sheaffer
Ralph A. Sheetz
Dr. Paul E. Smith
Elinor Green Spencer
E. Elizabeth Tipton
Dr. Harold W. Weigel
Clarence A. Welliver
Rev. Willis W. Willard, Jr.
*Albert F. Winkler
Samuel W. Witwer, Jr.

1931

John C. Arndt
Dr. Herbert A. Baron
Llewellyn R. Bingaman
Sherwood M. Bonney
Eleanor Lehman Bowman
Dorothy A. Bryan
Flora Lynch Burns
Dr. Robert L. D. Davidson
*T. David Davis, Jr.
Rev. Wilton J. Dubrick
Dr. Milton E. Flower
Alice Folsom
Dr. Clarke M. Forcey
George P. Fulton
Lewis F. Gayner
Sara Lukens Gayner
Robert C. Haberstroh
Jeannette B. Hays
Charles V. Hedges
*Samuel F. Heffner
Donald S. Himes
John M. Hoerner
Dr. Marshall H. Huey, Jr.
William S. Jenkins
Laura Crull Johnson
*Dr. Robert Killam
J. Boyd Landis
Janet Rogers Landis
Donald G. Lee
Gladys B. LeFevre
John T. Logan
August L. Lorey
Mary Louise Loy
George R. McCahan
Sara F. McDonald
Marjorie Ekholm Merrick
Virginia Loveland Miles
Dr. Charles M. Moyer
Dr. Robert T. Patterson
Robert M. Pierpont
Helen McConnell Ragan
Adelaide Markley Rishel

*F. Scott Rowe
Dr. Howard L. Rubendall
Robert O. Rupp
Walter L. Sandercock
J. J. Shomock
Calvin H. Shultz
Dr. Henry A. Spangler
Dr. Joseph J. Storlazzi
Henry B. Suter
A. Douglas Thompson
Richard H. Wagner
Rev. Melvin L. Whitmire
Sara Whitcomb Wightman
Elinor D. Zeiter

1932

Albert H. Aston
Dr. Lowell Atkinson
John L. Baker
Dr. Grant W. Bamberger
Priscilla Charles Bradley
Winfield C. Cook
Rev. Francis P. Davis
Savilla Bonham Davis
John B. Farr
Marian D. Faucett
M. George Feingold
Dr. Albert W. Freeman
*Bernard L. Green
*Ralph H. Griesemer
George Hires, III
David S. Holbrook
William E. Holley
A. Emerson Howell
Seymour Hurwitz
Judge Robert Lee Jacobs
Paul Jacobsen
Helmuth W. Joel
Edward E. Johnson, Jr.
*Germaine L. Klaus
Rev. Abram G. Kurtz
Dr. George M. Markley
Ruth Blackwell Marshall
Frank S. Moser
Ida Hurwitz Mossovit
Charles E. Myers
Joseph J. Myers
J. Wesley Oler
Meyer P. Potamkin
Mary Chronister Rhein
Edward K. Rishel
Lloyd W. Roberts
Frederick F. Rush
Betty Walker Skelton
Dr. George M. Sleichter
Boyd Lee Spahr, Jr.
Helen Stover Stuart
J. William Stuart
Robert A. Waidner
Sara Rohrer West
Richard H. Zeigler

1933

Albert Bass
William P. Billow
Florence Miller Bricker
Thomas L. Brooks
Edwin M. Buchen
Lilian Baker Carlisle
Jack B. Daugherty
J. Milton Davidson
David E. Detweiler
Benjamin Epstein
Frances Yard Fox
Elizabeth Basset Geyer
*Katharine Keller Griesemer
M. Louise Heckman
L. Waldo Herritt
Cyril F. Hetsko
Joseph G. Hildenberger
Gertrude B. Holman
Doris Brandt Houck
George M. Houck
Mary L. Hoy
Dr. Jesse J. Hymes
Carl H. Ingersoll

*Deceased

Emma Shawfield Jacobs
E. Huber Jessop
William S. Johnson
*Dr. Kenneth J. Kennedy
Walter B. Kershner
James Knight
Roy R. Kuebler, Jr.
James W. March
Jeanne Whittaker Meade
Rev. Clarence E. Miller
Helen Dickey Morris
Marie Moore Myers
Dr. Frederic W. Ness
Rev. G. Elliott Presby
A. James Reeves
Dr. Thomas F. Reilly
Carl L. Seitz
Dr. Raymond Shettel, Jr.
Hilbert Slosberg
Dr. Charles W. Smith
Christian C. F. Spahr
*Anne Green Stultz
Melvin C. Tabler
Peter J. Tashnovian
Dr. Robert G. Taylor
Dr. Craig R. Thompson
Dr. Milton Unger
Dr. C. Leslie Weidner
DeHaven C. Woodcock
Gerald L. Zarfos
Thomas V. Zug

1933L

Clark H. Painter

1934

*Leo Asbell
Herman Berg, III
M. Elinor Betts
Dr. John W. Bieri
Sydney David Brenner
Dr. W. C. Brewer
Jack H. Caum
Elizabeth Hibbs Crankshaw
Lester T. Etter
Geneva Jumper Finkey
R. Wayne Foor
John B. Fowler, Jr.
Rev. Nelson H. Frank
Albert C. Franks
Dr. Thomas J. Fritchey
Bertha Lynch Gladeck
Fred C. Gladeck, Jr.
Jack F. Gothie
Harris R. Green, Jr.
Albert H. Greene
Earl R. Handler
George A. Hansell, Jr.
Elizabeth Hess
Harry E. Hinebaugh
Priscilla McConnell Hinebaugh
Dr. Lloyd W. Hughes
Dr. Abraham Hurwitz
Prof. Benjamin D. James
*Martin O. Kahn
*Edwin V. Kempfer
*Charles H. B. Kennedy
Thomas F. Lazarus
Max R. Lepofsky
Dr. Katherine Loder
Ruth Royer McKean
Paul A. Mangan
Dr. Francis R. Manlove
William R. Mark
John C. Nebo
Margaret Davis O'Keefe
Dr. G. Wesley Pedlow, Jr.
Dr. Herman W. Rannels
Barabara Rynk Reynolds
*George B. Schlessinger
Herschel E. Shortlidge
Frieda Brown Shortlidge
Judge Dale F. Shughart
Walter E. Smith
Maj. William Steele, Jr.

Harvey M. Stuart
Emma Wentzel Toth
E. Mac Troutman
Millard A. Ullman
Duane M. Van Wegen
Christina M. Vestling
Sgt. Maj. Frank H. Wagner
Dr. Luther M. Whitcomb
Rev. David A. Wilson, Jr.
*Richard R. Wolfrom
Harry C. Zug

1935

Robert R. Bartley
Dr. Whitfield J. Bell, Jr.
Herman Belopolsky
Blair M. Bice
Dr. Walter P. Bitner
G. Edward Bolter
Sidney W. Bookbinder
Mary Prince Caum
Elaine S. Chamberlain
Leopold Cohen
Howard Crabtree
*Edward W. Danien
Dr. Sidney Denbo
Mary A. Duncan
Dorothy L. Edwards
Edward C. First, Jr.
Paul G. Fleischer
Willard K. Fohl
Bernice M. Gotshall
Fred H. Green, Jr.
Charles F. Greevy, Jr.
Robert B. Haigh
George V. Hudimatch
Harriet Matter Keller
Paul A. Koontz
Fletcher Krause
Alberta Schmidt Leech
*L. Lindsey Line
Wayland A. Lucas
Kathleen Rickenbaugh
MacCampbell
Lois Eddy McDonnell
Rev. John A. McElroy
Madeleine Lynch McIntire
Dr. Donald K. McIntyre
Edith M. Machen
Dr. R. Gilbert Mannino
Helen Jackson Martin
Harold M. Missal
William H. Quay
William Ragolio
George E. Reed, II
Louis Reuter, Jr.
William B. Rosenberg
Ruth Burr Sawyer
Vernon H. Schantz
John A. Scott
R. Harper Sheppard
Margaret Martin Sloane
Albert E. Smigel
Dr. John J. Snyder
Ruth Shawfield Spangler
Dr. R. Edward Steele
Mary Beale Tanger
William S. Thomas
Frederick W. Turner
Gerald von Minden
Chester H. Wagner
G. Bruce Wagner
Elizabeth S. Williams
Percy C. Wilson

1936

William Ackerman
Leonard B. Blumberg
Marjorie Helms Bolter
Harold B. Canada
Virginia Clark Chilton
Elizabeth Goodyear Clarke
Rev. Daniel K. Davis
William H. Eastman

H. Lynn Edwards
Elizabeth Stuart Einstein
Dr. J. S. D. Eisenhower, Jr.
Dr. Rowland B. Engle
Howard C. Gale
William D. Gordon
John V. Hawbecker
Richard B. Hunter
Harold F. Kerchner
Dr. William E. Kerstetter
Dr. Paul V. Kiehl
Rev. Elmer L. Kimmell
William E. Kurtzthalz
Charlotte Chadwick Litchauer
Mary Stevens Longanecker
Robert L. McCartney
Sherwin T. McDowell
Naomi Gibson Miller
John W. Mole
Nicholas Nayko
Rev. Wayne E. North
John A. Novack
Margaret J. Pendleton
Dr. Lloyd S. Persun, Jr.
Rowland B. Porch
Dr. Edward C. Raffensperger
Margaret Hagerling Schierloh
Dr. Charles J. Shapiro
Idamae Folk Shaw
Evelyn Gutshall Snyder
Helen Schreadley Snyder
John F. Spahr
Kenneth C. Spengler
Samuel H. Spragins, Jr.
Leo Stern
C. Richard Stover
Robert J. Trace
Ruth A. Trout
June Bietsch White
Dr. Erwin Wickert
Samuel Wilker
Clarence Winans
Marcia Lamb Zarger

1937

Dr. Milton B. Asbell
Kathryn Ward Baird
Adele R. Blumberg
Samuel Bookbinder
Richard M. Boulton
George L. Briner
Ralph R. Decker, Jr.
Ruth Crull Doolittle
Alpheus P. Drayer, Jr.
Robert H. Eastman
J. William Frey
Martha O'Brien Gieg
C. William Gilchrist
Ruth Youngblood Godshall
Clayton G. Going
Genevieve Marechal Grangy
Frances Eddy Guinn
E. Vincent Gulden
Harold E. Hench
J. Guy Himmelberger
Eleanor Swope Holmes
Grace Carver Kline
Dr. Leonard Koltnow
Charles W. Kugler
Dr. John W. Long, Jr.
Elizabeth Shuck Lower
Walter D. Ludwig, Jr.
Edward J. McClain
W. Alex McCune, Jr.
*Fred V. McDonnell
Helen Standing Mack
Gertrude F. Maffett
Arthur R. Mangan
I. Emanuel Meyers
Chester D. Miller
Daniel Radbill
Ruth Schabacker
John W. Sellers
George Shuman, Jr.
Paul Skillman
Erma H. Slaight

Vance L. Smith
Lewis M. Sterner
Eva I. Townley
*Mason H. Watson
Caroline Little Weber
Clinton R. Weidner
Dr. D. Frederick Wertz
Haldeman S. Wertz

1938

Janet Brougher Asher
Donald E. Austin
John F. Bacon
J. William Bailey
George W. Barnitz, Jr.
William J. Batrus
Jeanie Deans Chalmers
Fred J. Charley
Charles H. Davison
Dr. Walter V. Edwards, Jr.
Nancy Bacon Eunson
William H. Feroe
C. Joseph Foulds
*Lt. John F. Hart
Clarence B. Hendrickson, Jr.
Donald S. Hyde
Kenneth E. Jenkins
Barbara L. Kahn
Rev. Woodrow W. Kern
*Margaret R. Kitchen
Dr. Carl L. Knopf
Henry Line
Howard J. Loos
Dorothy Hyde Mowry
Harry J. Nuttle
William J. Oberdick
Evan D. Pearson
Alfred Reiter
Joseph R. Rice
Moses K. Rosenberg
Dr. Arthur B. Shaul, Jr.
Robert M. Sigler
John W. Sinner
Mildred Straka
Dr. David I. Thompson
J. Vance Thompson, Jr.
Margaret Brinham Trace
Dr. Clarkson Wentz
Rev. Louis E. Young

1939

Douglas C. Bell
Austin W. Bittle
Dr. Donald P. Bloser
Alvin G. Blumberg
Austin W. Brizendine
Elizabeth B. Brizendine
*Robert H. Carter
*Robert A. Craig, Jr.
Evelyn Clark Craig
Samuel B. Cupp
Yates Snyder Deahl
Joseph L. DiBlasi
Audra Ahl Dusseau
H. Brown Fry
Mary Person Gates
Christian V. Graf
Dorothy Gibbons Gross
*Dr. Hartford E. Grugan
Edwin A. Hartley
William R. Headington
Wm. H. Hendrickson
Ferdinand J. Hutta
Dr. Frank Y. Jaggars, Jr.
James C. Kinney, Jr.
Edward E. Knauss, III
Bernard J. Kotulak
Mary Swank Kramer
Saul Lazovik
*Martin H. Lock
William A. Ludwig
John H. McAduo
Eleanor Hursh McGinnis
W. Gibbs McKenney, Jr.
Charles H. McLaughlin, Jr.

Harry E. Mangle
Rev. Marion S. Michael
*Wallace B. Moore
T. Edward Munce, Jr.
Robert P. Nugent
J. Harold Passmore
Julia Garber Ranagan
John E. Rich
Leon M. Robinson
Joseph Sansone
Jane Housman Sheetz
Judson L. Smith
David Streger
I. Crawford Sutton, Jr.
Irvin R. Swartley, Jr.
Marian Rickenbaugh Sweet
Barbara B. Terwilliger
Beatrice Pennell Thomas
Cmdr. George E. Thomas
Raynor W. Wallace
Anna G. Ward
Jacob K. Weinman
Isabella Belehass Wood
F. Curtis Yoh
Jean Lapley Young

1939L

John A. Drew

1940

Dr. Ewart M. Baldwin
Kenneth M. Barclay
Elisabeth Shenton Benson
Dr. Henry Blank
Guy A. Bowe, Jr.
Mary Kirkpatrick Breene
Esper Fink
Frederick A. Fry
Dr. Harry J. Fryer
Pauline Bloser Gibson
Martha Stoll Gorman
Dr. Paul L. Gorsuch
Margaret Munford Gruber
Rev. John C. Hillbert
Chap. Benjamin F. Hughes
Jessie MacCaffray Hughes
Dr. George H. Jones
Grace Dempwolff Jones
Dr. Simon E. Josephson
Gerald E. Kaufman
C. Blair Kerchner
Dr. Brooks E. Kleber
Yvonne Laird LaBrecque
Dorothy Wright Marotte
Edwin C. Marotte
Harvey W. Mather
Dr. Prima Mori
Donald R. Morrison
W. Roberts Pedrick
Wilbur M. Rabinowitz
Rev. Francis E. Reinberger
Jane Gilmore Scheuer
Dr. James E. Skillington, Jr.
Harry C. Stitt, Jr.
Dr. W. Albert Strong
Rev. Robert J. Thomas
Comdr. W. E. Thomas
Kenneth F. Tyson
John R. Ulrich, Jr.
Helen Mumper VanSant
Suzanne Young Watts
Dr. Franklin C. Werner
Dr. Neihl J. Williamson

1941

James M. Alexander
*Virginia B. Bloedon
C. Paul Butner, Jr.
John B. Carroll
W. Richard Eshelman
Harold M. Foster
Dr. Morris Foulk, Jr.
Mary Dagon Graf
Madelaine Batt Grafton
Lester L. Greevy

Marion Van Auken Grugan
Louis M. Hatter
Richard W. Hopkins
Thomas W. Horton
Dorothy H. Hoy
Dr. Marshall D. Jackson
Ann Housman Jacobs
Bernice I. Johnson
John I. Jones
Charles W. Karns
*Claire Shape Kerfoot
Frank Kitzmiller, Jr.
Markin R. Knight
Samuel J. McCartney, Jr.
*Mary Samuel McCune
Robert W. McWhinney
Jane Raring Marlatt
Washington L. Marucci
Elwood J. Mellott
John E. Metzger
Jean McAllister Metzger
Samuel C. Miller, Jr.
J. Neafie Mitchell
Mary B. Mohler
William T. Nelson
Dr. William A. Nickles
Dr. Robert R. Owens
*William H. Peters, Jr.
Rev. Herbert E. Richards, Jr.
Jackson G. Rutherford, III
Paul Shaffer
Bernard J. Sheeler
Ruth Leavitt Shinn
Diana R. Slotznick
Dr. Franklin K. Stevens
Dr. Robert C. Sutton
Mary M. VanBuskirk
Russel G. Weidner
Richard A. Zimmer

1942

Sylvester S. Aichele
Albert E. Andrews
Lee E. Chaplin
E. Parker Colborn
Louise Dalton Cooling
John B. Danner, Jr.
Charles E. Duncan
Dr. Ezra J. Epstein
Oscar L. Feller
J. Franklin Gayman
William D. Grafton
Dr. Raymond C. Grandon
William E. Haak
Mary Snyder Hertzler
Dorothy B. Huntley
Elizabeth T. Jacobs
Aleta Kistler Keller
Dr. James H. Lee, Jr.
Alice Abbot MacGregor
J. Norton McClelland
James W. McGuckin
Nancy Nailor Mosso
Dr. George L. Rubright
Harry F. Ruth, Jr.
Elmer J. Saveri
D. Pierson Smith
William A. Steckel
Dr. Russell R. Tyson
Shirley Tanner Weed
Donald H. Williams

1943

Robert S. Aronson
John W. Aungst, Jr.
James L. Bacon
Josephine Matthews Baum
David D. Bloom
Antonio Cappello
Dorris Leib Cook
Donald D. Deans
Marshall B. DeForrest
Rev. Paul Denlinger
Mary Mackie Eshelman

Dr. Harry E. Fidler
Emma Gardiner Gieda
Jeannette Eddy Graham
Dr. Robert A. Grugan
Anna Halpin
Perrin C. Hamilton
Dr. John B. Harley
Helen Thompson Heritage
Benjamin Hinchman, III
Dr. Laurence S. Jackson
Horace L. Jacobs, III
Dr. John J. Ketterer
Dr. Weir L. King
Marcia Mathews Knapp
Sidney Lee Kuensell
Newell H. Langley
Verna B. Lenderman
Dr. C. Law McCabe
James Morgan McElfish
Palmer S. McGee, Jr.
Samuel F. Melcher
Norman R. Olewiler
Winfield A. Peterson
John T. Pfeiffer, III
Norma Gardner Pumphrey
Myra DePalma Reimer
Wilbur H. Rubright
Charles F. Saam
John C. Schmidt
Stokes L. Sharp
*Lt. Val D. Sheaffer
Dr. Grayson C. Snyder
Ronald Souser
James S. Steele
Dr. Fred J. Williams, Jr.

1944

Helen Frendlich Bott
John R. Bowen
Robert H. Cassel
Rev. Robert L. Curry
Jane Trezz Curry
Virginia V. Dreher
Dr. Richard Foulk
William Harold Gould
Edith Lingle Hollan
Dr. Morton W. Leach
Edwin E. Lippincott
C. William McCord
Dr. Donald W. Meals
Dr. Robert E. Miller
Arlene D. Mills
Dr. George S. Poust, Jr.
Dr. James Prescott, III
David M. Rahausser
Mary Snyder Ritter
Betty Johnson St. John
Norma Timmins Thompson
Norman L. Timmins
In Memory of Norman Conrad
Watkins
(by Mrs. Elizabeth Watkins)
Robert T. Wheeler, Jr.
Rev. Howell O. Wilkins

1945

Daniel B. Carroll
Helen Boetzel Coho
Thomas F. Dillon
Dr. Charles D. Foster, III
Dorothy Hartzell Keer
Ellen B. Morrow
Raymond N. Niehouse, Jr.
Dr. Irwin R. Saberski
Nancy Persun Sauer
Ruth F. Wallace
Alvin A. Woerle

1946

Helen Alexander Bachman
Louise Charley Bashour
Ralph W. Boyles, Jr.
Foster E. Brenneman
Dr. John D. Cunningham

Catherine S. Eitemiller
 Martha Wentzel Heffelfinger
 Dr. James B. Jamison, II
 Frank L. Johnson, Jr.
 Jane Breneman Kulp
 Irwin Lihn
 Kenneth J. Mackley
 Rev. Gilbert P. Reichert
 Jean Lentz Saam
 Glenn M. Smith
 Martha Stough Soltow
 Patricia Rupp Sourbeer
 Joan Thatcher Tiboni
 Dorothy Leeper Townsend
 Rev. Robert S. Wagner
 Marvin Z. Wallen
 Virginia Twyeffort Weber

1947

Prof. D. Fenton Adams
 Stanley D. Adler
 Anna Sausser Alexander
 Joseph Asbell
 Fred Barish
 Franklin C. Brown
 Robert G. Crist
 Miriam Koontz Drucker
 Jean Uhland Foster
 Robert C. Gerhard
 George R. Gracey
 Eugene Grandon
 James R. Griel
 *Robert E. Horner
 Margery E. Keiner
 David E. Lutz
 Norman K. MacGregor
 George G. McClintock, Jr.
 *William H. McInroy
 Wilbert C. McKim, Jr.
 Roberta S. Mallouk
 Myron Mayper
 James E. Meneses
 Barbara Macy Miller
 Thomas C. Mills, Jr.
 Rev. Ralph Lee Minker, Jr.
 Gladys R. Myers
 John A. Myers
 Michael G. Rafton
 Dr. Robert W. Saunderson, Jr.
 Roger M. Schecter
 Doris Krise Smith
 Ann Ulrich Starrett
 Edward F. VanJura
 Gordon McDowell Williams
 Daniel R. Wolf
 Rev. Robert N. Yetter

1948

Richard L. Aldstadt
 Earle S. Alpern
 Joseph S. Ammerman
 Dorothy Mathews Applin
 Neal D. Bachman
 Joseph A. Barlock
 Fay Reaser Bates
 Rev. A. Nelson Bennett
 Joan Clapp Biel
 Emanuel R. Blumberg
 William F. Borda
 Robert E. Bull
 William W. Caldwell
 Dr. Carmine A. Carucci
 David H. Cohn
 Charles R. Crawford
 Gladys F. Crowl
 John W. deGroot
 Mary Reynolds deGroot
 Harry S. Diffenderfer, III
 James N. Esbenshade
 Dr. Samuel J. Friedberg
 Dr. Ralph M. Gingrich
 Dr. Marvin Goldstein
 Robert Gorrell
 Robert Guarini
 William T. Guy

Dr. Robert K. Hafer
 Maxine Stanner Harris
 Louis A. Hartheimer
 Rev. Robert M. Hinkelman
 John D. Hopper
 Oliver N. Hormell
 Charles D. Johnson
 Lester A. Kern
 George B. Kirkpatrick
 Arthur W. Koffenberger, Jr.
 Daniel F. Koon
 Samuel L. Lebovitz
 Henry E. Lehr
 Norman L. Levin
 George G. Lindsay
 Nancy Bashore Lindsay
 June B. Lutz
 Palmer G. Lynn
 Howard J. Maxwell
 Miriam Ryder Mest
 Howell C. Mette
 Daniel R. Miller
 Ruth Stopford Murphy
 Edwin S. Nailor, Jr.
 Robert W. Neuber
 Edgar L. Owens
 Douglas Rehor
 John A. Roe
 Dr. Herbert S. Sacks
 Donald K. Shearer
 Herbert S. Sheidy
 Robert C. Slutzker
 Dr. Jesse O. Small
 Dr. Richard F. Staar
 Alma Anderson Staehle
 William H. Starrett
 William P. Virgin
 Jouko J. Voutilainen
 William J. Walker
 Dr. Frederick S. Wilson
 H. Gilman Wing

1948L

E. Yates Catlin, II

1949

John B. Armstrong
 Mary Rogers Batchelor
 James H. Bates, Jr.
 *Eugene Beck
 Dr. William W. Betts, Jr.
 Earl H. Biel, Jr.
 Lenore Shadle Caldwell
 Thomas D. Caldwell, Jr.
 Dr. Hampton P. Corson
 Gerald Cramer
 Gordon S. Fell
 I. Dwight Fickes
 David A. Fogg
 Thomas D. Gordon
 Dr. George W. Hess
 Joseph Hlywiak
 Dr. Howard L. Hoffman
 James P. Hopkins
 William W. Jamison
 Dr. Klaus Kartzke
 Dr. Hugh T. Knight
 Pauline Hayes Lawson
 J. Thomas Lewin
 Robert D. Lowe
 William R. Ludwig
 Samuel M. Lyon, Jr.
 William A. McDonald
 John W. McMillan, Jr.
 Robert Marine
 William H. Mechanic
 Franklin G. Meck
 Gardner B. Miller
 Dr. W. G. Pauley
 Henry A. Peterson
 John H. Phillips
 Dr. Theodore Rodman
 Dr. Herbert C. Rubright
 Vincent J. Schafmeister, Jr.
 Ada Collier Schecter

Minerva Adams Sherzer
 F. M. Richard Simons
 Estelle B. Solomon
 Ellis E. Stern, Jr.
 E. Wakefield Stitzel, Jr.
 Robert J. Streger
 Stephen J. Szekeley
 William J. Taylor, Jr.
 John J. Thomas, Jr.
 Ruth Lois Troster
 Ruth Bair Wilson
 Donald G. Windsor
 *Leon M. Wingert
 Daniel B. Winters

1950

George W. Ahl, Jr.
 Arthur E. Arnold, II
 Robert P. Banks, Jr.
 Jack M. Baumbach
 Mary Shaver Bemus
 Robert W. Bird
 Vilma Meszaros Brown
 James L. Bruggeman
 John T. Carpenter, III
 Lois Barnard Carpenter
 Thomas G. Chew
 J. Thomas Churn, III
 Warren F. Coolidge
 E. Charles Coslett
 Robert H. Crow
 H. Chace Davis, Jr.
 Thomas W. Davis
 Rosalie Enders Dunkle
 Richard T. Durgin
 Charles L. Eater, Jr.
 Richard Eisenhour
 Theodore H. Ely
 Doris Farquharson Erickson
 Pamela B. Evans
 Robert M. Frey
 Paul M. Gamble, Jr.
 Rev. E. S. Gault
 William B. Harlan
 Russell D. Harris
 Richardson T. Harrison
 Dr. Guy T. Holcombe
 Dorothy Heck Houlberg
 Harry A. Howell
 Edward T. Hughes
 Burrell Ives Humphreys
 Mildred Hurley
 Dr. William R. Jacoby
 Dr. Robert Johannes
 Dr. Raymond F. Johnson, Jr.
 Raymond A. Kaufmann, Jr.
 William L. Kinzer
 LeRoy G. Krieger
 Harvey S. Leedom
 David Lyon
 Jared R. McKown
 Rieta Latch Maxwell
 Donald R. Mikesell
 Dr. Dorson S. Mills
 Robert L. Mumma
 James H. Murray
 Stanley C. Nagle, Jr.
 P. Dale Neuffer
 Robert L. Novell
 Donald E. Oeschger
 Donald Olewine
 *Charles W. Orem
 Weston C. Overholt, Jr.
 Dr. Joyce Ziegler Pearson
 E. Richard Prager
 Ann Obermiller Reed
 Bruce R. Rehr
 Victoria Hann Reynolds
 Thomas W. Richards
 Peter W. Seras
 Marian Stephens Sheidy
 Frank W. Shelley
 Shirley Wicke Shoaf
 Dorothy Buttolph Simon
 William Paul Simons

C. Grant Smith
 W. Lehman Smith
 Louise Zug Souders
 Frederick K. Spies
 Robert S. Stackhouse
 Dr. Jacob C. Stacks, Jr.
 Rev. Eugene R. Steiner
 Charles Sweigard, Jr.
 David H. Taylor
 Armas Victor Vendon
 Morton J. Wachs
 Dr. George D. Warner
 Joseph K. Weaver
 Robert J. Weinstein
 Walther T. Weylman
 John P. Wilgus

1951

James K. Arnold
 Paul W. Becker
 Eric K. W. Bengtsson
 Dr. Robert E. Berry
 G. Kenneth Bishop
 Norman R. Bricker, Jr.
 Patricia J. Buttenheim
 Elton F. Carlson
 Wendell James Damonte
 *Joseph T. Davis
 Howard E. Deissler
 William H. Denlinger
 Harold E. Dunkle
 James W. Evans
 Joan Kline Gingrich
 Paul H. Gronbeck
 Mary Vickery Harding
 William M. Hartzell
 George W. Heffner
 Richard E. Hicks
 Maurice H. Ivins, Jr.
 Margaret Ayres Jacobs
 William A. Jordan
 Glenn W. Kindle
 Philip E. Kistler
 Howard L. Kitzmiller
 H. Robert Koltnow
 A. Carl Kriebel, Jr.
 Charles S. Lee, Jr.
 Barbara B. Lillich
 Elwood J. Long, Jr.
 John C. Mahaley
 Janet Knoblauch Miller
 Theodore L. Miller
 Margaret McMullen Morrison
 Rev. Stacy D. Myers, Jr.
 Donald H. Newman
 Dorothy T. Newman
 James A. Nickel
 Eugene M. Oyler
 Diane Williams Oyler
 Dr. Donald E. Piper
 Suzanne Horner Reed
 Nancy Bain Rehr
 J. Richard Relick
 Betty Fahs Ruch
 Ronald D. Saypol
 John J. Shumaker
 James D. Spofford
 John Wesley Stamm
 Paul L. Strickler
 Dr. Melvin Strockbine
 Richard W. Teele
 Helen Arseniu White
 Richard B. Wickersham
 Lee D. Wilbert
 Dr. Raymond J. Wiss
 Monty Yokel
 Dr. William J. Zapcic

1952

Norman N. Aerenson
 Harrison W. App
 Dr. William C. Bashore, Jr.
 Nancy Cressman Cashatt
 John S. Cassen, Jr.

Nelson M. Chitterling
 John E. Colburn
 John E. Corman
 Jerry L. Coslow
 Richard S. Crow
 Alan J. Davis
 Guy J. dePasquale
 Harry S. Diffenderfer
 Eileen Fair Durgin
 James M. Ecker
 *John B. Fellona
 John Fischer
 Wilbur J. Gobrecht
 Edward C. Goldman
 John Russell Grimm
 Paul E. Haines
 David R. Harkins
 Stewart B. Harkness, Jr.
 Marian Breu Harlan
 Charles J. Herber
 *Clarence H. Hess
 Robert H. Householder
 Elizabeth Keller Kennedy
 Elizabeth Shriver Keukjian
 John M. Klepser
 Norman M. Kransdorf
 Michael J. Levitt
 Andrew R. Lolli
 Edna Eitemiller Miller
 Frank B. Miller, Jr.
 David A. Nicky
 Kathryn Kilpatrick Nunneley
 Edwin Leonard Ochs
 James G. Park
 Robert M. Pizzini
 Elizabeth Barclay Poling
 Mary Peterson Rives
 Arlin E. Rojohn
 John Sherman, Jr.
 William W. Sherman, Jr.
 Perry J. Shertz
 F. Robert Shoaf
 Dr. Donald L. Snyder
 Louis A. Steiner
 Herbert J. Stoltzky
 Edward L. Swan
 Kathryn Williamson Vedder
 Janet L. Weaver
 Gerald Weinstein
 Ruth Pritchard Wilson
 Marvin A. Zucker

1953

Robert M. Allman
 Philip J. Anderson
 Theodore R. Bonwit
 Morris Burns
 Dr. William L. Clovis
 Joseph F. DiOrio
 William DuBose
 Willard R. Duncan
 Carole Dombro Ecker
 Henry C. Engel, Jr.
 Phyllis Hood Fredericks
 H. Robert Gasull, Jr.
 Patricia Haddock Gasull
 Julia A. Good
 *Virginia G. Hanington
 Frank T. Harrison, III
 Kenneth L. Harvey
 George C. Hering, III
 Robert S. Hershey
 Elizabeth F. Huddy
 Gomer W. Jones
 Kathryn Gleim Jordan
 Betty McCarthy Kelly
 Paul W. Kendi, Jr.
 Robert L. Keuch
 William Kollas
 Martha Lee Weis McGill
 James W. Mackie
 Donald L. Masten
 Dr. Martin H. Matz
 Jean G. Montgomery
 Bruce S. Pagan
 Dr. Anthony J. Pileggi, Jr.

*Deceased

James L. Pritchard
 Clifford T. Rotz, Jr.
 Richard P. Schecter
 E. Donald Shapiro
 Carl Fredric Skinner
 Willard F. Slifer, Jr.
 Loma R. Slike
 Mary Irwin Sullivan
 Julia Yoshizaki Takahashi
 John F. Trickett
 Emil R. Weiss
 George J. Wickard
 Robert J. Wise
 Thomas H. Young, Jr.
 David W. Zilenziger

1954

Paul N. Barna, Jr.
 Earl M. Barnhart
 Eileen Baumeister Barthel
 Robert A. Brown
 Herbert Callister
 Suzanne Ritter Chandler
 Robert B. Cohen
 Rae Halberstadt Comly
 Walter F. Cook
 Ann Davey Crumpton
 Mary Gibson Decker
 Dr. George M. Gill, Jr.
 Edward M. Goldberg
 Ronald Goldberg
 Nancy MacKerell Grant
 Louise Hauer Greenberg
 Henrietta Mohler Hartranft
 Betty Simpson Hemmerle
 Mary Smith Hirt
 Anne Hollister
 Dr. Jay M. Hughes
 Gail Bruce Joiner
 Robert L. Jones
 Mary Myers Keiser
 Dr. Howard Kline
 Sidney D. Kline
 Eugene A. Lesovsky
 J. Edwin Lintern
 James C. McGohan
 Harold F. Mowery, Jr.
 Barbara Brennfleck Overly
 Jean Thompson Pritchard
 Carolyn McMullin Rensch
 Peter J. Ressler
 Samuel G. Rhoad
 Clifford A. Rogers, Jr.
 Roberta Lamont Schreiner
 Alfons Sifferlen
 Royce W. Snyder, Jr.
 Elizabeth Swaim
 William E. Woodside
 Jeanette Leavitt Wurster
 Sarah T. Zerbest

1955

Herbert M. D. Adler
 Joan Trier Arnold
 Carolyn D. Baierbach
 *Alma M. Balla
 Ward E. Barnes
 Allen E. Beach
 Thomas A. Beckley
 Walter W. Belfield
 Paul F. Bolam
 William B. Comly, Jr.
 Suzanne Ruggles Dates
 Billie Hutchins Dietz
 Rev. Charles H. Dubois
 Earl R. Etzweiler
 Marie B. Fischer
 Richard M. Greene
 Forrest Craver Grimm
 Earl O. Hollenbaugh
 Aaron M. Kress
 Robert H. Krischker, Jr.
 Kenneth B. Lewis
 Jean Izatt Lorimer

T. Warren McCafferty, Jr.
 Barbara Majeski Majewski
 Kenneth A. Markley
 Gertrude Simmons Neff
 Irwin J. Nelson
 Theora Minzes Newmark
 Thomas N. Papoutsis
 Daniel P. Parlin
 Claire A. Pinney
 Virginia Radonich
 Edward M. Rappaport
 Ernest C. Reisinger
 John H. Rhein
 Carroll D. Smeak
 Richard J. Smethurst
 Wilma Hatter Starkey
 Martha Miller Tappan
 Robert L. Varano
 Glenn E. Welliver
 Grace Katz Wolf
 Jane Herr Wright

1956

Marvin D. Abrams
 Frederick L. Barton
 Barbara A. Bashore
 Walter E. Beach
 Katherine Schecter Bolam
 Robert L. Boyer
 Barry D. Brown
 Ruth Herrlich Burton
 Murray S. Eckell
 Joseph S. Ford, Jr.
 Charles M. Garwood
 Alice Ditzler Graham
 Raphael S. Hays, II
 Barry Hellman
 Sarah Anderson Hitchcock
 Shirley Cranwill Jordan
 Constance W. Klages
 Karl R. Knoblauch
 Elise Howland Koehler
 John Kohlmeier
 *Edward G. Latch, Jr.
 John A. Matta
 Patricia A. Matz
 Mary Keat Morris
 Donald D. Moyer
 Dr. James Nellas
 Donald L. Rittenhouse
 Shayle Robins
 Frederick E. Roth
 John W. Runkle
 Phyllis Fetterman Sexton
 Phyllis Engel Seldon
 Edwin E. Smith
 Carlyn Burgard Snelbaker
 Jeanne Carlson Spangler
 Kenneth Speed
 John Wesley Weigel, II

1957

Charles A. Ferrone
 Phyllis Linde Ferrone
 Dr. Edward R. Gilbert
 Dr. Ira D. Glick
 John H. Gould, M.D.
 Murray E. Hirshorn
 Robert W. Hurley
 Joanne Rothermel Ibach
 Barbara James Kline
 Benjamin I. Levine, Jr.
 Greta Szaban Lewis
 Joan Gallagher Lynam
 William Maquilken
 Marjorie Denslow Meyer
 Howard M. Nashel
 Edith Johnson Pennock
 Charles A. Rietz, Jr.
 Laurence M. Schwartz
 Frederick S. Seewald, Jr.
 Louis P. Silverman
 Herbert Silverstein
 Gary N. Spero

Lewis Sprechman
 Warren B. Swift
 Nancy Kelley Valego
 Matthew A. Waters

1958

Evan B. Alderfer, Jr.
 Walter Barnes, Jr.
 William E. Black, Jr.
 Jack W. Carlton
 James P. Fox
 Agnes Bruce Holst
 Barbara Thomas Hurley
 Joel J. Jacobson
 Francis S. Kaye
 Robert M. Kaye
 Monica Warfield Kulp
 Edward L. Lindsey
 Barbara Mohler McIlvaine
 M. Cade Brockelbank O'Brien
 Harold S. Parlin
 Jane Platts Peibly
 Sylvia Rambo
 Virginia Wolford Rasmussen
 Doris Weigel Rockman
 Margaret L. Sieck
 P. Frederic Stepler
 Donald C. Thompson
 Dr. Francis X. Urbanski
 John E. Watt
 Doris L. Werner
 John Wiley, Jr.

1959

Evan C. Frey
 Sue Hellman Silvestri
 Robert Elmo Young

1960

Merle Tegtmeier Bottge
 Robert W. Coutant
 John Curley, Jr.
 Robert Guy Dilts
 William C. Ford
 Sandra Deichler Gallagher
 Edna H. Jones
 Ellen Weigel Liberles
 James F. McCrory
 Leslie E. Morgan
 Neil B. Paxson
 Gerald B. Rifkin

1961

Andreas Bolter Campbell
 Kenneth L. Campbell
 E. Gailey Chambers
 Wayne H. Claeren
 Carol Christiansen Frey
 L. Emily Grimm
 Chester B. Humphrey
 Stanley W. Lindberg
 Robert L. McNutt
 Judith Engelke Montanaro
 Joseph T. Stephens, Jr.
 M. Keith Sullivan
 Joanne Macauley Wisor

1962

John W. Baker

1963

Stephen M. Courtland
 Roger M. Craver
 Ann Conser Curley
 Jeanne Heller Lindberg
 Marianne Huddy Lipa
 Thomas A. Logan
 Judith A. Moneta
 Judith A. Morris

1964

Melvin S. Blumenthal
 Michael Coleman
 Hans P. Frese
 Charles F. GaNun

James E. Gauntt
F. Scott Greenfield
Emily Zug Huebner
Norma Souser Kocher
Linn A. Myers
Harvey F. Palitz
David H. Romberger
Zella Rose Zeigler

1965

Forrest E. Craver, III
Richard R. Hoffman, Jr.
Richard Hosteley
Charles H. Lippy
Charles D. Ulmer
Barry L. Warren

Honorary

Dr. Frank E. Baker
Dr. Harry F. Babcock
Dr. Lee H. Bristol, Jr.
*Justice James B. Drew

*Deceased

*Dr. Adrian B. Foote
*Dr. Henry F. Graham
Dr. William F. Hufstader
Dr. Leon T. Moore
Dr. Andrew H. Phelps
Dr. Edgar C. Powers
Dr. William F. Rosenblum
Dr. John Emerson Zeiter

Faculty

*Dr. Milton W. Eddy
Dr. Edgar M. Finck
Prof. George R. Gardner
Donald Graffam
*Dr. E. Emory Hartman
Dr. Elmer C. Herber
Roger Eastman Nelson
Prof. John C. Pflaum

Trustee

*Merle W. Allen
Charles C. Duke

Be a Life Member

Next February we will publish a new list of Life Members. If your name is missing from this roster, you can insure it appearing in 1968 by a full payment of \$50.00 or a first installment of \$12.50. Checks should be made payable to *The Dickinson Alumnus* and sent to the

Alumni Secretary
Dickinson College
Carlisle, Pennsylvania

Life Membership dues are placed in the Lemuel T. Appold Life Membership Fund and income from this fund is used to help finance *The Alumnus* and other operations of the Alumni Office.

The Mary Dickinson Club continues to grow in life membership at a lively pace. At a recent dessert-bridge, which attracted 151 and which generated \$237.00, it was announced that 114 have become life members since the club originated in 1951. The club's current project is the furnishing of drapes for the Holland Union's dining room windows which face the main hall. The dessert-bridge provided not only the remaining sum needed to present

these drapes, but also the money required for a memorial membership to be announced at Commencement. Pictured above, left to right, are: Mrs. David B. Eavenson, Chairman of the Carlisle Chapter; Mrs. Elmer C. Herber, Membership Chairman; and Mrs. Jonas E. Warrell, member of the Executive Board of the local chapter.



Letters To (And From) The Editor



To the Editor:

I would like to congratulate the Dickinson College Alumni for their great good fortune in having Dr. George Gaylord Simpson as their principal speaker at the Homecoming Weekend Convocation.

As is characteristic of Dr. Simpson's signal contributions to systematics, taxonomy, evolution and other fields in biology, his presentation was singularly original and stimulating. While his address contained several new ideas, it seemed to me especially noteworthy for the forceful and direct, yet witty attack on several of the current pressing problems in natural resource conservation, overpopulation, and the dichotomy of biology. The historical matrix in which Dr. Simpson built his discussion seemed to me to give his thesis the relevance, direction and solidity that made this address so outstanding.

Sincerely yours,

Donald J. Zinn
Professor of Zoology
University of Rhode Island

To the Editor:

Thank you very much for the *Dickinson Alumnus*, your beautifully done journal. I was very pleased to see Mr. Burrowes's review and I am sure that Dr. Mason will be.

With all good wishes and kind regards,
Sincerely yours,

Gottfried Dietze

To the Editor:

For many years the *Alumnus* has reached me wherever my military travels have taken me. I look forward to it, particularly in the recent years in its present format.

My enjoyment has not been matched by any contribution on my part. To overcome this, and in some small measure to compensate, I would like to be enrolled as a Life Member. My check is enclosed.

Aloha,

Col. Donald S. Hines, '31
Honolulu, Hawaii

Dear Vince:

Please pardon this very tardy reply to your letter which answered my questions about the Al Wallace Book Fund. Unfortunately it was mislaid and not found until my wife and I started to clean up the apartment in preparation for the move into the Army.

Would you kindly see that the enclosed is applied to the "Al Wallace Book Fund?" I apologize for the amount; however, I have just finished school and, as you can imagine, our financial situation is not what we would wish it to be. However, it should brighten shortly and we will remember Dickinson—and especially the "Al Wallace Fund."

Thank You.

Sincerely,

Stephen M. Courtland, '63

(Editor's note.—Alvah A. Wallace, '64 lost his life in the service to our country. His classmates have begun a fund in his memory, the proceeds from which are used to purchase particular books for the Dickinson Library.)

To the Editor:

In the Fall '66 issue of the *Alumnus* under the heading Academic Philosophy in the minutes of the October '66 Alumni Council Meeting, the following incredibility was published: "... the average faculty salary is \$9400, thus enabling the College to compete fairly well for younger members of the faculty." To those "younger" alumni contemplating a return to the academic community of their Alma Mater, such a smug statement is truly disheartening to our professorial aspirations. How does a fine school like Dickinson expect to attract a younger faculty when many of us, in industry, are now earning higher salaries than the average College

faculty salary. To sustain the academic excellence of Dickinson, should not the monetary gains at least equal the scholarly rewards of college teaching?

In the same section of the Council minutes, the following statement was recorded: "... Dickinson's top salary is \$15,000 for professors of rank and seniority..." As in many industries, seniority is a hallowed status that constantly overshadows a much more important and more needed quality: COMPETENCE. Should not competence be rewarded equally well as many loyal years to the Dickinson community, or is cobwebbed thinking still a basic quality of the professorial image?

The maintenance of Dickinson's highly excellent academic standing is dependent, firstly, on COMPETENCE and secondly, on LOYALTY; yet neither of these necessities will be obtained without equal regard to MONETARY COMPENSATION for services rendered.

Sincerely,

Charles R. Craig, '65
Research Dept.
Cerro de Pasco Corp.
La Oroya, PERU

(Editor's note.—The quality of instruction is at the heart of any college and from its earliest days, Dickinson's faculty has been distinguished. Increasing vigorous competition among the better colleges for the ablest teachers makes it imperative for Dickinson to raise its salary scale both to retain this superior faculty we continue to enjoy and to attract additional superior teacher-scholars. "Smug" over our \$9400 average faculty salary? No. "Encouraged" more appropriately describes our reaction to this figure, because \$9400 is a considerable improvement over just a year ago. Alumni and friends made this improvement possible through their generous gifts to the Dickinson Fund and to the Six Million for Dickinson Campaign. Hopefully, response will be equally as enthusiastic toward the Ford Challenge Grant and the Third Century Development Program which sets forth as the number one commitment endowment for faculty salaries and student aid in the amount of \$3,300,000. Dickinsonians should be assured that there has been no swerving from our advertised basic assumptions which list as a premium goal the doubling of average faculty salaries in the decade 1964-1973.)

To the Editor:

Artistically, typographically and educationally, the Fall issue of the *Alumnus* was a masterpiece. As a purveyor of campus news, what's with the alumni and the Ford Foundation's offer of \$2,000,000 if we dig up \$6,000,000? How about the plan to help Dickinsonians with their last wills and testaments? What are the students demonstrating about now, new thinking by faculty members, etc.? It fell short of that classification.

If it was designed as a prestige piece, the objective was accomplished. That's the only logical explanation for giving one fourth of the space to that very fine speech by Dr. George Gaylord Simpson of Harvard. Are we trying to tell the casual reader that Dickinson is a "little Harvard," or what? Let's have a show of hands! How many alumni waded through that speech in print?

George W. Ahl, Jr., is a friend of mine and a Phi Kap too, but his very excellent article, "Management by Objectives" (3 pages) would have had a better editorial setting in *Business Week*—or maybe, *Fortune*.

The page devoted to Dr. Alpheus T. Mason, one of Dickinson's most distinguished scholars, was well spent. Robert D. Burrowes' tribute to two of his teachers is expertly and graciously done.

Don Moll's photos add sparkle all through the issue and, coupled with the news story of Homecoming, gave absent alumni a very good idea of what happened. There could have been more pictures, more news of Dickinsonians and less Harvardian text. Let it be said, sir, you are doing a wonderful job in other College fields in addition to being the editor of the *Alumnus*. That we know—and it's on the record.

The over-play on Harvard sort of set me off . . . I counted ten minutes before I sent you that unprintable postal card and ten days before I wrote this letter, so I've simmered down a little. If I had counted ten weeks, you wouldn't be reading this. It's better to get it off your chest than to mumble in your whiskers. So here it is, my neck is out . . . "shoot if you must this gray old head." Sincerely,

Paul "Irish" Walker, '21

From the Editor:

I believe it was Bacon who wrote, "The images of men's wits and knowledge remain in books exempted from

the wrong of time and capable of perpetual renovation."

We felt it was important to record Dr. Simpson's address of last Homecoming/Founders Day because, as a friend observed, this distinguished zoologist has a sufficiently great reputation in his field to get away with this sort of thing—no matter who is trampled. There were things that needed to be said and Dr. Simpson said them. Most of his talk "Biology and the Public Good" was original. Or at least, we were assured that he thought enough of Dickinson and Dickinson's contribution to the biological sciences to assemble a message especially for us as we saluted those both within and without the Dickinson family who had dedicated their lives to public service through these biological sciences.

It seemed to us that when a scientist of such eminence prepared an original document for an alumni affair, that all of our alumni—and friends—should have the opportunity to read it. It further seemed that the *Alumnus* was the most appropriate vehicle for this piece. Logically, if we are to be prudent with publication funds, a separate printing cannot in these instances, be justified.

For the record, this edition of the *Alumnus* was distributed in excess of 12,800. There have been numerous requests for the magazine by college level educators and persons unrelated to Dickinson, and we have responded to biology teachers at the secondary school level who have asked for copies for their libraries.

Hopefully we will never stray from the purpose of this magazine, which, as we see it, is to inform alumni about Dickinson, her plans, programs and progress; to report on the activities of the General Alumni Association and the activities of individual alumni; and to provide a forum for the discussion of issues pertaining to higher education.

To this end we have more than tripled the size of the Personal Mention section over the past two years and doubled the space for alumni profiles, and we seem to be equally enriched in number of articles authored by faculty and alumni.

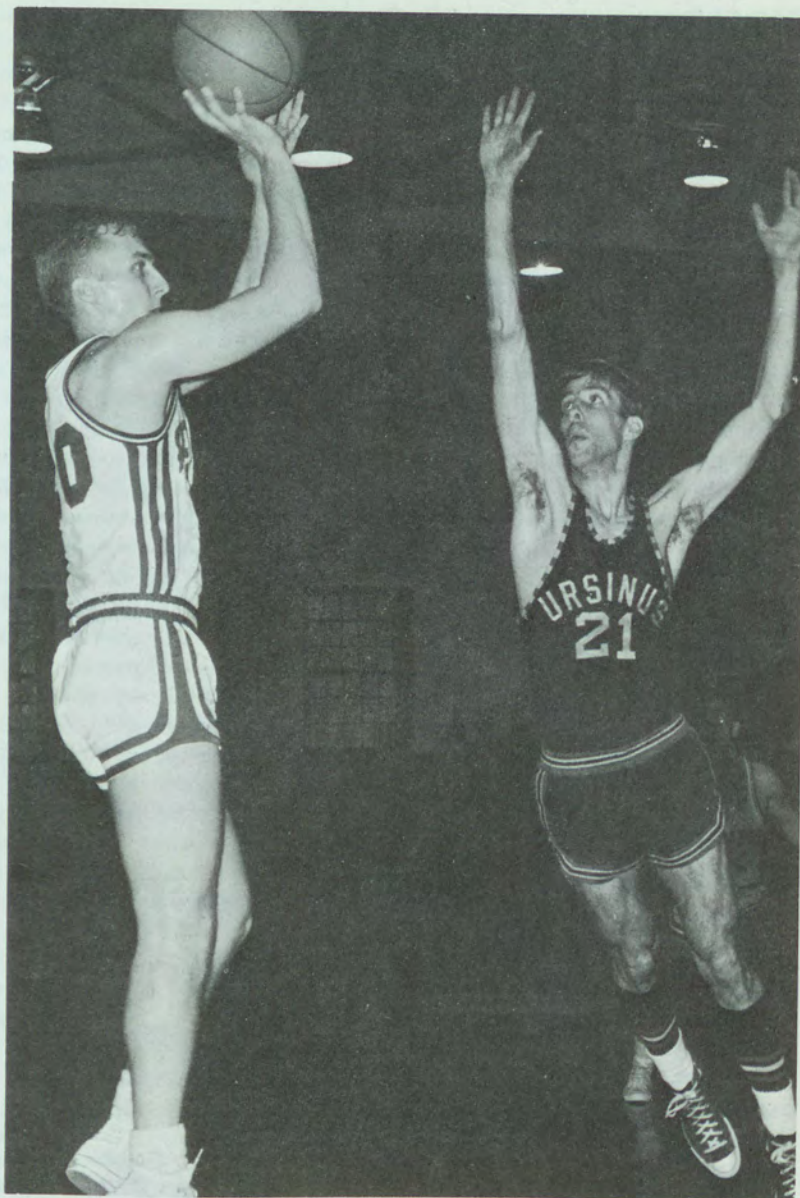
In an effort to continually upgrade the *Alumnus* and lend to its intellectual thrust, we will hope that a scholarly piece from time to time will be as pleasing to alumni as the newsier part of the magazine. V.J.S.

OOPS! DEPARTMENT

The SAE house won The Alumni Association Cup for the best Homecoming display. We regret the error in photographs in the Fall Alumnus.



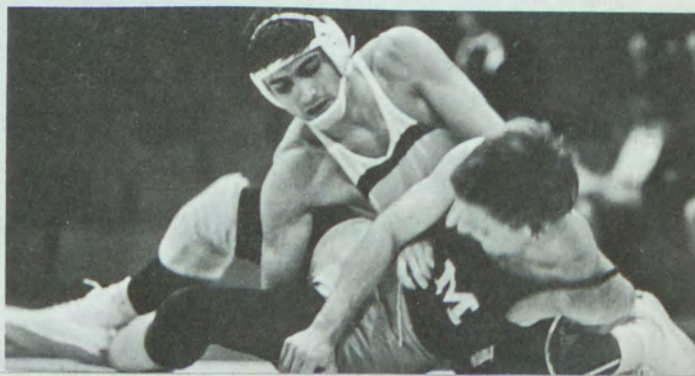
Around The Campus



Jon Zimmerman, '67, gets away his one-handed jump from the side of the free throw line, a favorite spot. Co-Captain Zimmerman is sharp-shooter, ball handler, playmaker and the team's leading scorer after 12 games. The Red Devils have won six and lost six.

Bill Moyer, '67, winner of 25 straight races, holds all of Dickinson's breaststroke records and is the defending Middle Atlantic Conference champion at 100 and 200 yards. He was voted a College All-American last year and seems a sure bet to repeat this season. The College swim team continues undefeated after five dual meets.

Phil Jacobson, '68, ran out of time as he moved near a pin hold on Bill Dutchman of Muhlenberg, but he shut out his opponent in a 123 pound match triumphing 9-0 and helped Dickinson to defeat the Mules for a 3-won, 2-lost record midway through the season.



A Second Honorary Doctor of Laws for Dickinson President

President Rubendall has been singled out by the Dickinson School of Law for "impressive developments" brought about at the College under his leadership.

The law school in a recent ceremony conferred the honorary degree of Doctor of Laws upon Dr. Rubendall, shown left with former Pennsylvania Governor William Scranton who also received the Doctor of Laws.

Dr. Rubendall is a robust man 6 feet, 4 inches in height. The degree citation made this observation of him:

"Anyone who has seen this man charge across the campus from his office to his home, with his umbrella en garde, will have observed the length of his stride.

"But the stride of those legs is nothing compared to the stride of his mind. Here is a wide-ranging, imaginative mind which is able to grasp the essentials for progress beyond tomorrow. Here is a tenacious, persuasive mind that brings plans to fruition.

"Under this man's guidance impressive developments have taken place at Dickinson College. A walk through the campus demonstrates this physical growth. More difficult to evaluate but no less impressive is the growth in faculty, student body and academic status.

"All this in five years of dynamic leadership."

Dr. Rubendall assumed the duties of president in July, 1961, and was inaugurated October 28 of that year.

This was the second honorary Doctor of Laws for Dickinson's president this year. Earlier he had received this supreme compliment from the University of Pennsylvania.



President Rubendall (left) and former Governor Scranton recently were presented the honorary degree of Doctor of Laws by the Dickinson School of Law.

Over 200 alumni and friends in Carlisle, under the leadership of Dr. John Harris, Jr., '47, have joined in affectionate conspiracy to meet a local goal of \$585,000—part of the \$6,000,000 required to earn the \$2,000,000 Ford Challenge Grant. Four of the key men serving the Special Gifts Committee, left to right, are: G. Kenneth Bishop, '51; Paul L. Strickler, '51; Pierson K. Miller; and James D. Flower, Esq., '42.



Annual Giving Fund Can Generate \$80,000 in Ford Money

"What do we do for an encore?" That could well be the attitude of General Chairman John Snyder's volunteers after three eminently successful years and national recognition in 1966. But it isn't! By September 1, plans for the execution of the '67 drive had been mapped out and key volunteers recruited. On October 22, these key workers arrived in Carlisle for a thorough briefing. In every way, a sense of urgency prevailed.

Now this same urgency has been transferred to hundreds of homes stretching from Maine to California, and the pace of the drive has been stepped up in an effort to reduce the length of the cam-

paign period.

This year, \$240,000 is sought to balance the educational budget at Dickinson. To achieve this unprecedented amount, alumni have set a minimal goal of \$100,000, half of which is already in hand. The Parents Association, ambitiously pursuing an objective of \$30,000, is also skiing the downhill slopes with over \$16,000 in unrestricted gifts and grants.

Considering the Ford Foundation Matching Grant, \$240,000 in Annual Giving this year will release \$80,000 in matching funds. The goal may read \$240,000, but any way you look at it, it's \$320,000 to strengthen Dickinson.

College-Community Orchestra is Now Fully Instrumented

The Dickinson College-Carlisle Community Orchestra made its first appearance of the season in a concert last December 4th in the Holland Union theatre with a new concertmaster in the person of William Butler.

Mr. Butler is a Canadian recently returned from a European trip. A gifted violinist and teacher, he has been engaged by the college to give private lessons on the stringed instruments to Dickinson students and other persons.

Dennis P. Kudlawiec of the music department of the college is the conductor of the orchestra for the second year. He is enthusiastic about the 35-piece group as constituted last fall, saying it

is playing "much more musically" and for the first time full instrumentation.

The featured number of the program was Beethoven's Symphony No. 1, opus 21, in C major which the composer wrote while still in his teens. All four of the movements were played.

The orchestra opened with Serenade No. 1, opus 1, by Vincent Persichetti, in five short movements, and continued with Four Old English Tunes, by Gordon Jacob, played by the woodwind and brass sections. Russian Folk Dances, by Bela Bartok, and an impressionistic piece, On Hearing the First Cuckoo in Spring, by Frederick Delius, completed the program.



Professor Dennis P. Kudlawiec, conductor of the College-Community orchestra, (left) chats with Professor Frederick P. Ferré, Professor Clarke W. Garrett and Mrs. Elizabeth M. Coloviras. The orchestra numbers 35 at this printing and is growing.

Personal Mention

1904

On July 29, Mr. and Mrs. A. HAVEN SMITH will celebrate their 50th wedding anniversary with their third trip to the South Seas and the Orient. They plan to leave Long Beach, California on June 29 and return to this country the end of August.

1915

LESTER A. HECHT, attorney of Philadelphia, is the author of a new book entitled "Pennsylvania Municipal Claims and Tax Liens," published in January. This is the only book in Pennsylvania devoted exclu-

sively to this subject. He was commissioned by Geo. T. Bisel and Company, publishers of Philadelphia, to prepare the book.

1918

Dr. MERLE I. PROTZMAN is slowly recuperating at his home in Arlington, Virginia after suffering a mild stroke on June 27.

The Rev. H. K. ROBINSON has been elected chaplain of the Sheffield, Massachusetts American Legion Post, and presented a U. S. flag to the postmaster on the dedication of the new Sheffield Post Office.

1920

The Rev. Dr. HOWARD SCHLEY FOX retired in November from the active ministry of the United Church of Christ, Gettysburg, where he served for 26 years. Ordained in 1923, Dr. Fox has been in the ministry for 43 years. He is a past president of the Mercersburg Synod and a member of the Board of Visitors of the Theological Seminary. He also was privileged to serve as the chaplain for the State of Pennsylvania. Since his retirement he is now living at 470 Pershing Avenue, Lebanon.

Dr. EDGAR R. MILLER and Dr. ELIZABETH BUCKE MILLER, '23 left the States the end of December for a three month trip to the Hospital Albert Schweitzer where they will help in the Mellon Hospital. The Millers new address will be P.O. Box 2213-B, Port-Au-Prince, Haiti, W. I.

Since his retirement as principal of the Cheltenham High School, ALBERT E. WESTON has been Director of the Evening Division, Philadelphia College of Textiles and Science.

Dr. and Mrs. ALPHEUS T. MASON, of Princeton, New Jersey, returned in January from a visit to Israel under the auspices of the Israeli Ministry of Foreign Affairs. Dr. Mason was

guest lecturer at the Hebrew University Law School and National Defense College. He is the authorized biographer of the late Supreme Court Justice Louis D. Brandeis, leader of the Zionist movement in this country.

1921

Mrs. EVELYN C. GILMAN was recently married to Roy F. Chapin. The couple now resides at Town Apartments L-1, 2100 62nd Avenue, North, St. Petersburg, Florida 33702.

Mrs. SARAH McCREA JONES recently moved from Wilmington, Delaware to Chapman Lodge, McCrea, Newville. She is a member of the Associate Board of Women's Christian College, Madras, South India; The College for Women in India; the Japan International Christian University Foundation, Inc., Tokyo, and a trustee of the Friends of Sarah Tucker College, Palamcottai, South India.

1924

PAUL J. SMITH, of Harrisburg, was installed as the new president of the Kiwanis Club. Mr. Smith is the senior member of the law firm of Smith and Smith.

NORMAN M. EBERLY, information specialist with the Pennsylvania Department of

It's your 50th Reunion this spring, 1917. Details soon on Commencement Weekend and a program we've designed to help you celebrate the occasion.





Walter P. Shuman, '27

Agriculture, retired on January 27 after 50 years in news and information work. Formerly with the Pennsylvania State University as news editor of the Cooperative Extension Service, he joined the department in 1962. Mr. Eberly has done much promotion work on the State Farm Show, the Pennsylvania Livestock Exposition and the All-American Dairy Show. He initiated the proposal for staging the 1968 National Plowing Matches at Hershey, site of the 1958 national meet.

1926

Dr. GEORGE H. ARMACOST, president of the University of Redlands, Redlands, California, was elected president of the Association of Independent California Colleges and Universities in November. The organization has 49 colleges and universities enrolling 70,000 students.

Dr. ALVIN A. FRY, who retired from public school administration, is now serving as a representative and educational consultant for the Fideler Publishing Company, Grand Rapids, Michigan. Dr. and Mrs. Fry attended the convention of the American Educational Theatre Association in Chicago the last week in December.

1927

WILLIAM PFEIFFER retired as business manager of the Mont Alto campus of Pennsylvania State University after 38 years of service. Upon his graduation, he joined the faculty there as an instructor in forestry and as registrar. In 1929 he also became business secretary and in 1937 attained the rank of assistant professor.

Mrs. Irene Bucke Fray, mother of Rev. ALFRED C. FRAY, died on October 2, in Catawissa.

1929

STANLEY H. SHIRK is the executive director of Scientists of Tomorrow with offices at 309 New Flidner Building, Portland, Oregon 97205. During the summer they sponsor two week institutes in the sciences and engineering at colleges and universities throughout the nation. The program is wholly privately supported, principally by revenue

from student fees. Mr. Shirk was the founder and established the first program in 1955; the first institute was held in 1956 at Oregon State University. He was recently cited as "Citizen of the Week" for his tireless effort and devotion in helping young people throughout Oregon.

WILLIAM H. GERLACH, former attorney and insurance agent, is the author of two journals, "An Interview with Charles Dickens on Methodology" and "Don't Encourage Business Law Students to be Their Own Lawyers." The first article appeared in the November issue of *The Journal of Politics* and the second in the January issue of *Business Education World*. Mr. Gerlach is a professor of political science at Eastern Kentucky University.

1930

Mr. C. MELVIN SHIELDS is an administrative assistant in the new Tuscarora School District, Mercersburg. His office is located in St. Thomas, which is now part of the new district. He previously served as principal in the former St. Thomas Township School District.

1931

ROBERT M. PIERPONT, a member of the American National Red Cross staff for nearly 30 years, has been appointed national director of the organization's Disaster Services. He has served as deputy director of this service since 1959. Mr. Pierpont's broad experience in disaster relief work enabled him to serve outside the Continental United States. He has had assignments in Austria, Chile, Somali Republic, Tanganyika, Cuba, Haiti, Guam and Saipan.

Dr. and Mrs. MARK M. EVANS, of West Chester, recently returned from a cruise in the Black Sea and the Mediterranean. Dr. Evans was on a sabbatical leave for the fall semester from West Chester State College where he is director of student teaching.

1932

Frederick J. Engell, husband of RUTH MUMAW, collapsed in his office at Kansas City Fire and Marine on November 1 and died a short time later. The



Robert M. Pierpont, '31



Herschel E. Shortlidge, '34

Herman Belopolsky, '35



Stanley H. Shirk, '29





David E. Weimer, '37

Engells recently moved to 9421 Meadow Lane, Leawood, Kansas.

WINFIELD C. COOK, a member of the College Board of Trustees, served as the representative of the College at the inauguration of John Van Gaasbeek Elmendorf as president of New College, Sarasota, Florida in February.

1933

In October, EVERETT B. POST was appointed assistant vice president with the Federal Reserve Bank of New York, in charge of the Accounting and Planning Departments. Mr. Post who has been with the bank since 1930, attended New York University and the American Institute of Banking and is a graduate of the Stonier Graduate School of Banking of Rutgers University. In 1964 he served as an adviser to the Central Bank of the Philippines.

1934

MAX R. LEPOFSKY, attorney of Norwalk, Connecticut, was elected to membership on the American Arbitration Association's National Panel in June.

HERSCHEL E. SHORTLIDGE, of Drexel Hill, was appointed head of Girard Trust Bank's newly formed Building Planning and Development Division. Mr. Shortlidge moves to his new assignment from the bank's Real Estate Division which he has headed since 1957.

The Honorable DALE F. SHUGHART, Judge of Cumberland County, was selected chairman of the Juvenile Court Judges Commission in November.

1935

HERMAN BELOPOLSKY, attorney of Burlington, New Jersey, was named County Judge of Burlington County in September and was sworn in on October 14. Prior to his elevation he was County and City Solicitor of Burlington. He was a delegate to the Constitutional Convention in 1966 which concerns itself with Legislative Reapportionment.

1937

W. A. McCUNE, of Worcester, Massachusetts, joined the Avoc Bay State Abrasives Division, Westboro, as manager of distribution. He will also

serve in a secondary capacity as manager of export sales. Prior to this new assignment, Mr. McCune was sales manager and director of Norton International, Inc.

MILLARD ALTLAND is principal of the West York Area Junior High School.

In December DAVID E. WEIMER was promoted to director of purchasing at Carlisle Tire and Rubber Division of the Carlisle Corporation, succeeding WALTER P. SHUMAN, '27, who retired on January 1. Mr. Weimer previously served as credit manager of the division and insurance administrator of the Corporation.

1938

ROBERT M. SIGLER, of Edina, Minnesota, is City Manager for the Chevrolet Motor Division of the General Motors Corporation, Minneapolis. His son, a graduate of Princeton University, is now a first year student at the University of Michigan Law School. His daughter is a member of the senior class at Dickinson.

1939

Gretchen Anne Wood, daughter of Mr. and Mrs. JAMES H. WOOD (BARBARA CURTIS, '40) of Media, graduated Phi Beta Kappa from Oberlin College in June. She is working on her master's degree at the University of Chicago.

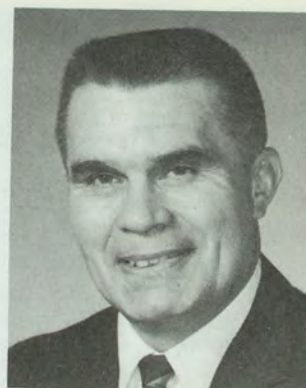
SAMUEL PADJEN was named product manager of automotive tubes retread and repair materials of Carlisle Tire and Rubber Division of Carlisle Corporation in December. He began his training program with the company more than 20 years ago with the industrial engineering department, later assigned to production scheduling and then to research and development of special tubes.

1940

James Duncan, Jr., son of IRENE YAEGER DUNCAN, of Baltimore, Maryland, is a freshman at Clemson University taking electrical engineering.

1943

PERRIN C. HAMILTON, an Ardmore attorney, was named secretary of property and sup-



Samuel Padjen, '39

James R. Shepley, '39, just named publisher of Time magazine.



plies, the 17th Cabinet appointment by Pennsylvania Governor Raymond P. Shafer. Previously a special assistant deputy attorney general, Mr. Hamilton is a graduate of the Dickinson School of Law and a member of the law firm of Hamilton, Darmopray and Mallow.

1946

J. GORDON HANNA, a former research associate at Olin-Mathieson Chemical Corp., has been named to the department of analytical chemistry by the Connecticut Agricultural Experiment Station. Previously a member of the staff of General Aniline and Film Corp., Mr. Hanna was appointed to his new position by the Governor of Connecticut.

1947

The Rev. RALPH L. MIN-KER, JR., of Chestertown, Maryland, has been the first clergyman ever to address the Goth National Meeting of the American Institute of Chemical Engineers on the subject of Ethical Problems and Engineering Management.

DONALD L. KETELS, of Edgewater Park, Beverly, New Jersey, has been promoted to vice president of the Frankford Trust Company, where he is also assistant secretary. Mr. Ketels joined the staff in 1946 and prior to his promotion was assistant vice president. He and his wife, the former Erma Turner, are the parents of three sons.

1948

Dr. JOSEPH O. STRITE, director of the Franklin County Mental Health Clinic in Chambersburg, was the featured speaker at the Shippensburg Junior Civic Club in October. Dr. Strite was director of the Out-Patient Department at the Harrisburg State Hospital before assuming his duties with the Health Clinic in July.

NORMAN L. LEVIN, attorney of Lewistown, was elected vice president of the Pennsylvania School Boards Solicitors Association in October.

Dr. SAMUEL J. FRIEDBERG has been promoted to associate professor of medicine at Duke University. He and his wife announced the adoption of a

daughter, Jean Louise, in February 1966.

The Rev. DANIEL F. KOON moved from Warriors Mark to Simpson Methodist Church, Altoona in July. At the end of January, he attended the National Convention of Hospitals and Homes in Chicago as a representative of the Central Pennsylvania Annual Conference of the Methodist Church. For the past two years, Rev. Koon has served as a member of the Committee of Thirty that planned a nursing home to be built at Lewisburg in conjunction with the Evangelical United Brethren Church.

1949

Major FRED J. MAURADA, JR. recently completed a ballistic missile staff course at Vandenberg AFB, California. Major Maurada, a communications staff officer at Offutt AFB, Nebraska, is a member of SAC.

ROBERT C. PETERSEN, of Cumberland, Maryland, is manager of the Cumberland Chamber of Commerce, and is serving as president of the Maryland Association of Chamber of Commerce Executives and vice president of the Appalachian Thruway Association.

1950

Dr. GUY T. HOLCOMBE, JR., of Oxford, was appointed deputy coroner of Chester County in 1966. He is a member of the Advisory Board of Industrial Valley Bank for the Oxford office.

The November issue of *Fortune* carries an article on Stanford Research Institute with a picture of the Acania, which is skippered by Woodrow Reynolds, husband of VICTORIA HANN REYNOLDS. The Reynolds live in Oakland, California.

Mr. and Mrs. JOHN G. MAIN, '51 (ELEANOR CAT-TRON) have returned to New York after a temporary consulting assignment with an Australian client in Melbourne for nearly two years. Their New York address is c/o McKinsey & Co., Inc., 270 Park Avenue.

GEORGE L. LANGDON, of Middletown, Connecticut, was promoted to senior underwriter in the administrative-underwriting division of the Group Department at the Travelers Insurance Company in Hartford.

CARROLL F. BREHM has been appointed as product manager of the molded and Sureflex hose at Carlisle Tire and Rubber Division, Carlisle Corporation. He has been with the division for over eight years having assisted in product development of the radiator hose and industrial tire departments. The Brehms with their four children live in Carlisle.

1951

Dr. ROBERT E. BERRY, a medical missionary surgeon in Nepal, spoke to the Woman's Society of Christian Service of the North District Philadelphia Methodist Conference in October.

In December, EUGENE M. OYLER was named Director of the new Information Management Laboratory at HRB-Singer, Inc., State College. After four years service in the U. S. Air Force, he joined the staff of HRB-Singer in 1956 and was appointed project director in 1960. Prior to his new appointment he served as development branch manager in the Company's Operations Research and Systems Analysis Laboratory and director of the data processing operations.

Dr. MELVIN F. STROCKBINE is in his third year of residency training in radiotherapy at the world famed M. D. Anderson Hospital, Houston, Texas. In July he plans to return to the Geisinger Medical Center in Danville where he will be a staff radiotherapist.

LEWIS E. STOVER, of Houston, Texas, was appointed a research associate by the Esso Production Research Company, a subsidiary of the Humble Oil and Refining Company on December 1. Dr. Stover joined the Carter Research Laboratory in 1956, later to become the Jersey Production Research Company, a predecessor company of Esso Production Research. The Stovers with their three children reside at 831 St. Francis Lane.

Mr. and Mrs. H. R. Harding (MARY VICKERY), of Rensselaer, New York, announced the birth of a daughter Caroline Patricia, on August 25.

1952

WILBUR GOBRECHT, head football and lacrosse coach at the College, represented Dickinson



Donald L. Ketels, '47



Carroll F. Brehm, '50

Eugene M. Oyler, '51





Robbie Krischker, the son of Robert H. Krischker, Jr., '55.

at the 1967 National Collegiate Athletic Association (NCAA) convention in Houston, Texas in January. He also attended sessions of the American Football Coaches Association.

DAVID A. NICKEY was awarded the doctoral degree in geology at the December commencement of Pennsylvania State University.

Mrs. JOYCE INGHAM ROSS recently had published an article for the *Events* magazine of Syracuse University entitled "Integration and Education in Syracuse." Her husband, Dr. Gilbert S. Ross, is chairman of the Department of Neurology at the State University of New York, Upstate Medical Center, Syracuse.

HORACE M. FREDERICKS has been promoted to assistant manager, Speciality Plate Sales of Alan Wood Steel Company, Conshohocken. His previous position was a sales representative in the Philadelphia area.

Mr. and Mrs. HUGH H. DONEY (RUTH COSTENBADER, '55) of Monroe, Louisiana, announced the birth of their third child, Deborah Diane, on December 20. Mr. Doney received his doctoral degree in geology from the University of Texas in August and is an associate professor of geology at Northeast Louisiana State College.

1953

JOSEPH F. DIORIO, II, was promoted to associate professor at Alabama College, Montevallo, Alabama.

WILLIAM L. STARK was transferred to the Naval Investigative Service Office at Subic Bay, Philippines in September. His wife and two sons plan to join him in a few months.

JAMES H. HOUSER was appointed Regional Sales Manager—East for Pennsalt Chemicals Corporation, Plastics Department in the fall. His new address is 1210 Karen Lane, West Chester 19380.

Mrs. MARTHA WEIS MCGILL, of Glen Ellyn, Illinois, will serve as the representative of the College at the inauguration of Glenn Lowery McConagha as president of Blackburn College, Carlinville, Illinois, on April 22.

1954

Dr. JOSEPH P. ZACCANO, JR., of Harrisburg, was named acting head of the History and Political Science Department at Elizabethtown College in October. Prior to joining the Elizabethtown faculty in 1962, Dr. Zaccano taught at the University of Pittsburgh and the Harrisburg Area College. He was awarded both his master's and doctor's degrees from the University of Pittsburgh.

MICHAEL G. SILVER has been named manager of news information, CBS Television Network Press Information. For the past five months he had been director, Publicity and Promotion, CBS News Election Unit.

PAUL C. TARR, III, of Springfield, has been elected an assistant secretary of Life Insurance Company of North America. Prior to his new assignment, Mr. Tarr was associate director of INA-Life's Contract Administration Department.

Dr. RONALD GOLDBERG, of Berlin, New Jersey, was re-elected vice president of the 108-member medical staff of John F. Kennedy Memorial Hospital, Stratford, New Jersey.

1955

In November, M. CHARLES SELLER was appointed an assistant to the president at Grinnell College, Grinnell, Iowa. Prior to assuming his new duties, Mr. Seller was director of public information at Lafayette College since 1958. Married to the former JANE E. MYERS, he is the father of a son and a daughter.

In January, Dr. WILLIAM H. KLOMPUS will complete his residency training in urology at the University of Louisville School of Medicine and will begin practice of urology at the Trover Clinic, Madisonville, Kentucky.

Mr. and Mrs. ROBERT H. KRISCHKER, JR., of Devon, announced the birth of a son, Robert Norton, on April 1, 1966.

On August 31, CLAIRE A. PINNEY was promoted to the rank of major in the United States Marine Corps. She is stationed at Camp Pendleton, California.

1956

DAVID O. ROSER, of Glastonbury, Connecticut, is presi-



Paul C. Tarr, III, '54



John P. Winand, '56

dent of availability of Hartford. His office is the 45th of the association of independent personnel consultants, which is the second largest organization of its kind in the country. They offer both temporary and permanent placement for qualified applicants throughout the Hartford area.

JOHN P. WINAND, general accounting supervisor at Monsanto Company's Chemstrand Division nylon plant at Pensacola, Florida, has been promoted to manager, accounting services, at Chemstrand Limited's nylon plant at Dundonald, Scotland. The Winands, with their four children, will move to Scotland.

Mr. and Mrs. Donovan R. Allen (BARBARA SHILLINGSBURG), of Moorestown, New Jersey, have announced the adoption of a daughter, Elisabeth Anne, born April 5. They have a two year old son David.

MURRAY S. ECKELL, attorney of Chester, has been elected secretary of the Delaware County Bar Association for 1967. A partner in the law firm of Eckell and Sparks, he and his wife reside in Wallingford with their three children.

Captain HILLELSCHWARTZ returned to the states in December following a 12-month tour of duty in Vietnam where he served as an advisor to a Vietnamese regiment and battalion. He is now stationed with the 101st Airborne Division at Fort Campbell, Kentucky.

1957

Mr. and Mrs. JOHN H. GOULD (CAROL WARE), of Shiloh, New Jersey, announced the birth of their third child, Leslie Ruth, on April 15.

Mr. and Mrs. EDMUND G. HAUFF, of Allentown, announced the birth of a daughter, Katherine, on October 15.

Announcement has been made of the engagement of MILES J. GIBBONS, JR. to Winnifred C. Doyle, an alumna of Mary Washington College. A graduate of Georgetown University Law School, Mr. Gibbons is an attorney for AMP, Inc. Miss Doyle is associated with Goodwill Industries of America. A spring wedding is planned.

1958

LEO C. BYRON and Carolyn A. Kuhn, an alumna of Gettys-

burg College, were married in the First EUB Church, Middletown. Leo is attending Pennsylvania State University for his master's degree and is employed by the Pennsylvania Department of Agriculture as a management analyst.

PETER JOSEPH SHARP was awarded a master's degree in education in Guidance and Counseling at Shippensburg State College in November.

Mr. and Mrs. John H. McIlvaine (BARBARA MOHLER), of Philadelphia, announced the birth of a daughter Joan Hermon, on June 25.

RICHARDE VAN DEUSEN, of Summit, New Jersey, was promoted to senior sales promotion specialist in the Prudential Insurance Company's advertising and sales promotion department. Prior to joining Prudential in 1963, he was the executive director of the Community Theatre in Mobile, Alabama.

Dr. RICHARD H. SHANAMAN, of Boston, Massachusetts, is completing two years of training in periodontology at Boston University Graduate School of Dentistry and Beth Israel Hospital. His wife, the former JOANNE TOTMAN, '59, was named director of the Nickerson Home for Children in November. The home, a temporary shelter for 26 children, is operated by the Massachusetts Society for the Prevention of Cruelty to Children. The Shanamans with their three sons plan to return to Pennsylvania late in 1967 when Dick plans to open his own practice.

Mr. and Mrs. JAMES L. HOLLINGER (KAY MILLER), of 3201 DeKalb Boulevard, Norristown, announced the birth of their third son, Paul Andrew, in June.

ROBERT ARKING, a candidate for his doctorate in biology at Temple University, presented a research paper on genetics at the annual meeting of the American Association for the Advancement of Science in December in Washington, D. C.

Mr. and Mrs. Billy T. O'Brien (CADE BROCKELBANK), of Charlottesville, Virginia, announced the birth of a son, William Thomas, on July 19.

H. WARD ADAMS, of Camp Hill, has been appointed director of personnel in the Department

of Internal Affairs. Since 1963, Mr. Adams has been administrative officer in the Bureau of County Collections in the Pennsylvania Department of Revenue and previously held positions as an insurance underwriter and account executive.

1959

LEONARD E. SPANGLER, of Linwood, New Jersey, recently participated in an advanced speech training program held by Chas. Pfizer & Company, Inc., at its world headquarters in New York City. Mr. Spangler is a medical sales representative for Pfizer's J. B. Roerig and Company division.

Dr. EDWARD C. BLACK and Carol Sue Rosin, an alumna of the University of Delaware, were married on December 29 in the chapel of Temple Beth Emeth, Wilmington, Delaware. Dr. Black is a resident psychiatrist at St. Elizabeth's Hospital, Washington, D. C., where Mrs. Black is teaching in the public schools. The couple now reside in Alexandria, Virginia.

RUSSELL B. ADAMS, JR. was named manager of the Boston news bureau for *Business Week* magazine in November. Prior to this he was manager of the magazine's news bureau in Denver for three years. He previously was assistant manager in the Philadelphia bureau.

Mr. and Mrs. JUDSON LAIRD, III, of Norwalk, Connecticut, announced the birth of their fourth child, first son, Francis Judson, IV, on July 4. Jud is regional advertising manager for *Flying* magazine in New York City.

J. BRUCE MCKINNEY was appointed to the executive department of the Hershey Chocolate Corporation in November. Prior to accepting this position he was district manager of Travelers Insurance Company in Norristown.

HENRY L. MENIN, Esq., has opened his new office for the practice of law at 926 Bethlehem Pike, Erdenheim, Pennsylvania 19118.

Mr. and Mrs. Richard F. Duprey (ARLENE ROBINSON), of Washington, D. C., announced the birth of a daughter, Celeste Ruth, on August 24.

Captain ROBERT EAMES is serving with the 55th Military



Leonard E. Spangler, '59

Intelligence Detachment in Nha Trang, Vietnam.

Mr. and Mrs. JOHN E. WILLIAMS, II, of Springfield, announced the birth of a son, David Ellsworth, on September 30 in the Delaware County Memorial Hospital, Upper Darby.

Mr. and Mrs. Charles C. Gifford (SALLY KITTREDGE) of Avon, Connecticut, announced the birth of their first child, Sarah Irwin, on November 4.

Mr. and Mrs. EVAN C. FREY (CAROL CHRISTIANSEN, '61) announced the birth of their second daughter, Leslie Jean, on December 14. Evan is Director of Annual Giving and Public Affairs Officer at the College.

1960

Captain ALBERT A. ALLEY has assumed the position of director of aeromedical services at Castle Air Force Base, California. His prior service was at Brooks Air Force Base, Texas.

Mr. and Mrs. ROBERT W. CRAWFORD, of Scottsdale, Arizona, announced the birth of a son, Robert, III, on July 7.

Mr. and Mrs. DONALD W. DAVIS, of Mamaroneck, New York, announced the birth of their second daughter, Susan, on July 21. Don is working for the Board of Cooperative Educational Services in Westchester County as a Vocational Counselor.

JON K. TAYLOR is a pilot/engineer for Trans World Airlines currently flying Boeing 707's out of J. F. Kennedy International Airport, New York.

Mr. and Mrs. THOMAS B. PRICE (NANCY CROSS), of Lakewood, Ohio, announced the birth of their second son, Jeffrey Cross, on September 9.

CASPER P. BOEHM, JR., Sayreville, New Jersey, became an associate with Edwin A. Kolodziej in the practice of law. A graduate of Rutgers University School of Law, Mr. Boehm was previously employed with a law office in Princeton, New Jersey.

Dr. and Mrs. ROBERT B. ORT, of Quantico, Virginia, announced the birth of a daughter, Jennifer Elizabeth, on June 29.

Dr. and Mrs. WILLIAM A. FREEMAN, of Poplar, Montana, announced the birth of their second child, Ann Louise, on

June 17. Dr. Freeman will complete his tour of duty with the U. S. Public Health Service in Montana in June and plans to return to Shippensburg where he will enter the general practice of medicine with his father, Dr. ALBERT W. FREEMAN, '32.

Announcement has been made of the engagement of ETHEL BERNICE FOSTER to Edward J. Keebler, an alumnus of Drexel Institute. Miss Foster has done graduate work at the Sorbonne and Temple University. Her fiancé is taking graduate work at Temple University. An October wedding is planned.

The Rev. CHARLES M. SPRING and Janet H. Gilchrist, an alumna of Wells College, were married on December 28 at Montview Boulevard Presbyterian Church, Denver, Colorado. Rev. Spring is an assistant professor of philosophy and religion at Colorado Woman's College and is studying for a doctorate at the Iliff School of Theology. The couple now reside at 319 Gaylord Street, Denver.

1961

DAVID G. STEVENSON and Marian I. Macy, an alumna of Hollins College, were married at the bride's home in Short Hills, New Jersey on December 23. Mr. Stevenson is an associate in the law offices of James R. Stoner, Washington, D. C. and his wife is employed by the Cancer Research Division of the National Institute of Health in Bethesda. The couple now reside at 1121 Arlington Boulevard, Arlington, Virginia.

Mrs. CAROL HITCHENS JORDEN, of Wilmington, Delaware, reports that her husband JAMES F. JORDEN, '63, is company commander for the 1st Aviation Brigade at Tai Son Nhut, Vietnam. He expects to return to the states in September.

HARRY DANNER is presently singing with the Metropolitan Opera Studio which recently made a CBS-TV documentary. During the past summer he was a soloist with the Cleveland Orchestra and starred with Giorgio Tozzi of the Met in "The Great Waltz."

DOUGLAS A. VILLEPIQUE has been transferred from Porto Alegre, Brazil to Sao Paulo, where he is a credit officer with the First National City Bank. Married to the former CAROL



Albert A. Alley, '60



Russell B. Adams, Jr., '59

WEIANT, '62, their new address is Caixa Postal 8888, Sao Paulo, Brazil.

Mr. and Mrs. ALLAN C. SIDLE, of Mt. View, California, announced the birth of a son, David, on July 30. Allan received his Ph.D. in psychology from Stanford University in January and is currently a research associate in the department of psychiatry at Stanford University School of Medicine where he is also a third year medical student.

LYNN G. R. HOCKENBERGER was awarded a master's degree in English at the December commencement of Pennsylvania State University.

Mr. and Mrs. ROBERT L. McNUTT, of Philadelphia, announced the birth of a daughter, Barbara, in October.

Captain and Mrs. GARY L. EHRlich announced the birth of a son, Randall Victor, on October 27. Dr. Ehrlich is serving as a flight surgeon at Loring Air Force Base, Limestone, Maine. Mrs. Ehrlich is the former Maryanne Heske, an alumna of Wilson College.

Captain LAWRENCE M. SCHECTER was graduated from the U. S. Air Force School of Aerospace Medicine, Brooks AFB, Texas, and has been assigned to March Air Force Base, California. Dr. Schecter is a 1965 graduate of Hahnemann Medical College.

GEORGE E. HOFFER, who graduated from the Dickinson School of Law in June, has been admitted to practice before the Cumberland County Bar in November. He will be associated with William F. Martson.

Dr. and Mrs. George G. Baker (SANDRA MARTIN) announced the birth of their first child, Christopher Parry, on November 11. The Bakers new address is Box #11, c/o Medical Department, Navy #230, FPO, Seattle, Washington 98791. In January, they were transferred to the Naval Station on Adak, an island in the Aleutian Chain, 2000 miles from Seattle.

On November 15, the Rev. JOSEPH P. TIMLIN officially became the new pastor of Mar-dorf Methodist Church, Altoona. Prior to attending seminary in 1956, he worked as a chemist for five years. He was ordained a full member of the Central

Pennsylvania Conference of the Methodist Church in June 1964. Married to the former MARTHA HOGAN, '52, the Timlins with their two sons have moved to Wehwood Park.

Captain THOMAS E. FALEY JR., a graduate of the U. S. Military Academy received the Silver Star, 2 Bronze Stars, the Air Medal and the Commendation Medal while serving in Vietnam. He is currently attending the Infantry Officers Career Course at Fort Benning, Georgia.

Captain TIMOTHY S. DIN-GER will return to the States in June from Pleiku, Vietnam.

Captain Gary F. Simons, USMC, husband of BARBARA KEUCH SIMONS, recently completed a tour of duty as a helicopter pilot in Vietnam. They spent a brief time together in Okinawa and Barbara is now touring the Orient before returning to the States in the Spring.

1962

Announcement has been made of the engagement of STUART A. WURTMAN to Enid L. Fishman, an alumna of Syracuse University. Stuart is a graduate of the University of Pennsylvania Law School.

Captain JAY A. DENBO completed the orientation course for officers of the U. S. Air Force Medical Service at Sheppard AFB, Texas in October. He has been assigned to Wurtsmith Air Force Base, Michigan to practice as a dentist with the Strategic Air Command. Dr. Denbo

is a 1966 graduate of Temple University Dental School.

Mr. and Mrs. WILLIAM M. STECKLEY (LINDA GOOD-RIDGE, '63) are now living at 7420 Southwest 82nd Street, Miami, Florida 33143. Linda is teaching seventh grade English at the Redland Junior High School.

THOMAS FERGUSON, of West Palm Beach, Florida, has been named chief administrative aide to Governor Claude Kirk of Florida. Prior to his new assignment, he had been administrative assistant to a nationally known general contracting firm of Louis Perini. Mr. Ferguson had previously worked in the department of the Secretary of State of Florida from 1964 to the spring of 1965.

R. ANDREW HORSLEY was appointed commercial manager for the Bell Telephone Company in West Chester. He previously was an administrative assistant with Bell's commercial training school.

Captain DAVID C. MEADE is presently serving with the 2nd Battalion, 13th Artillery in Vietnam.

1/Lt. DONALD L. SHIVE is an avionics officer of the Pacific Air Forces serving in Vietnam. He was previously assigned to the 4514th Armament and Electronics Maintenance Squadron at Luke AFB, Arizona.

EDWARD CURRY is working as a law clerk to Judge Richmond B. Keech, of the U. S.

District Court for the District of Columbia.

MARTHA YOUNG, of Mahwah, New Jersey, is a book designer of elementary and high school texts for Harcourt, Brace and World, Inc., New York publishers, where she has been employed since graduation.

Mr. and Mrs. Richard M. Lee (JULIA KERSTETTER) recently moved to 885 Covington Drive, Detroit, Michigan, where Mr. Lee is an experimental psychologist on the staff of the Henry Ford Hospital. Julia is working at the Juvenile County Court Clinic for Child Study.

Mr. and Mrs. Henry J. Blankenheim (JUDITH WOOLFORD), of Hightstown, New Jersey, announced the birth of their first child, Dawn Elizabeth, on July 2. Mr. Blankenheim is employed as a systems analyst with the McGraw Hill Publishing Company.

Lt. STEVEN W. SWARTLEY is serving his second tour of duty in Vietnam and is presently with the Seal Team One Detachment Golf.

Announcement has been made of the engagement of Dr. ROBERT E. LEIBOWITZ and Diana L. Teitler, an alumna of the University of Maryland School of Nursing. Dr. Leibowitz is interning at Grady Memorial Hospital in Atlanta, Georgia. The couple plan to be married on March 12.

Captain and Mrs. VICTOR J. HETRICK (MARIAN MOORHOUSE, '63) announced

Thomas E. Faley, '61



the birth of a son, Craig Stuart, on July 1 in the U. S. Army Hospital, Camp Zama, Japan.

ROD J. PERA has become associated with the Harrisburg law firm of McNees, Wallace and Nurick.

The Rev. DAVID W. RIM-BACH is the assistant minister of Grace Methodist Church, Baltimore, Maryland.

Dr. and Mrs. JAMES V. SNYDER (ANN SMITH, '65) are now living at 1163 Saxe Avenue, Cuyahoga Falls, Ohio. Ann is teaching in Nordonia Hills, Ohio and Jim is serving an internship at Akron City Hospital.

1963

Announcement has been made of the engagement of ANNE E. PINKERTON to George C. Fago, an alumnus of Franklin and Marshall College. Both Anne and her fiancé are taking graduate work at the University of Pittsburgh. A July wedding is planned.

Mr. and Mrs. David L. McKee (JUDITH EVERETT), of Lawton, Oklahoma, announced the birth of a son, David Douglas, on January 27, 1966. Judith is teaching at Cameron College and working on her master's thesis for Brown University. In April they will leave Ft. Sill for El Paso, Texas.

Lt(jg) JEFFREY H. GORHAM recently returned to the states from a 9-month cruise aboard the USS Chase County (LST532) in the South China Sea, primary mission of carrying cargo between Taiwan and South Vietnamese ports. Jeff is presently stationed at the Great Lakes Naval Training Center, where his address is 220 East Walton Place, Chicago, Illinois.

Mr. and Mrs. JOHN R. McCLELLAND (JEAN WEL-LER) recently moved to a new home at 906 Oakbourne Roads, Westtown, West Chester. Jack is presently actuarial manager of the Fidelity Mutual Life Insurance Company in Philadelphia. Jean is teaching educable mentally retarded children in the West Chester Area School District.

Mr. and Mrs. JOHN F. HARPER, JR. (JUDITH HENNING, '65), of Glastonbury, Connecticut, announced the birth of a second daughter, Lisa.

WILLIAM K. SCHANTZEN-BACH, who was released from active duty with the Army in December, was awarded the Army Commendation Medal. He began graduate school at the University of Pittsburgh in January.

On February 1, WILLIAM M. GORMLY became associated with the Harris Trust and Savings Bank, Chicago, Illinois, in the Charge-Card Division. He was previously a special agent with the Prudential Insurance Company of America in El Paso, Texas.

ROBERT A. SAALFELD, Esq., of Mahwah, New Jersey, has gone into partnership with his father, Magistrate Otto A. Saalfeld, Jr., for the general practice of law.

MARK COSTENBADER, of Charlottesville, Virginia, a senior at the University of Virginia Medical School, was elected to Alpha Omega Alpha (national honor medical society) and Raven Society (university honor society). His wife, VIRGINIA KRUEGER, '64, is teaching 6th and 7th grade science and mathematics at Jack Jonett Junior High School.

GORDON D. FRONK, who passed the Maryland Bar examination in June, is now stationed in Berlin, Germany with the 4th Bn., 18th U. S. Infantry until July 1968.

ANN THOMPSON KERN resigned her Navy commission and is now a graduate teaching assistant in speech arts at San Diego State College, where she is a candidate for a master's degree in theatre. For the Pacific Amphibious Force production of *South Pacific*, she served as stage manager. At San Diego State College she appeared as Miss Meacham in the Aztec Theatre Guild's production of *Separate Tables*; served as house manager for *The Time of Your Life* and worked on lighting and production crews for *Leave It to Jane*. Ann is employed part-time by the San Diego Recreation Department as a creative dramatics instructor.

ELAINE KALENEVITCH, of Hershey, was admitted to practice law before the Supreme Court of Pennsylvania in November. She is an associate in the law firm of McNees, Wallace

and Nurick, Harrisburg.

JERRILYN M. BINGAMAN and Lt. Robert E. Snyder, a graduate of Pennsylvania State University, were married on May 28. The couple now live at 800 March Drive #2, Big Spring, Texas, where Lt. Snyder is undergoing pilot training at Webb Air Force Base.

Mr. and Mrs. GEORGE W. RUPPRECHT, JR., of Baltimore, Maryland, announced the birth of a son, George W., III, in April.

H. DONALD PASQUALE was recently admitted to practice before the Supreme Court of Pennsylvania. He is currently associated with the law firm of Fox, Differ, DiGiacomo and Lowe in Norristown. On February 24, Lt. Pasquale will leave for Ft. Gordon, Georgia for SIGC School.

Lt. PAUL H. OSTIEN, JR. and Della M. Omlor, of Glen Riddle, were married on September 17 in the Lima Methodist Church, Lima. A graduate of Villanova University School of Law, Lt. Ostien completed Officer's Candidate School at Newport, Rhode Island and was commissioned on February 3.

Mr. and Mrs. JAMES J. EYSTER, JR., of Ithaca, New York, announced the birth of a daughter, Jennifer Wade, on July 4. Jim is attending Cornell University School of Hotel Administration.

MARIANNE HUDDY and Dr. Joseph Lipa, Jr., an alumnus of the University of Pennsylvania School of Dentistry, were married on June 18 in Trinity Methodist Church, Philadelphia. Following a honeymoon to the Virgin Islands, Puerto Rico and Jamaica, the couple now reside at 1300 St. Vincent Street, Philadelphia.

SCOTT A. WILLIAMS, a graduate of George Washington University Law School, was admitted to practice before the Lycoming County Courts in November. He is associated with the law firm of Furst, McCormick, Muir, Lynn and Reeder.

Lt(jg) and Mrs. CHARLES R. McCRACKEN (SUSAN SCHMIDT), of Long Beach, California, expect to return to the east in May and will take up residence in Maplewood, New Jersey.



Jack E. Oppasser, '63

JUSTINE ENGLERT is employed as head of the testing department of a private psychological testing firm, Personnel Research Center, in Philadelphia.

JACK E. OPPASSER, of Wilmington, Delaware, was named manager of employee relations of the New England marketing region, Atlantic Division, of the Atlantic Richfield Company, with headquarters in Providence, Rhode Island. He joined the company in 1963 as a marketing trainee and was a personnel assistant at the company's Belmont marketing terminal in Philadelphia.

LOUIS D. MOORE, 2d, and Vassilia F. Shelton, an alumna of Columbia University, were married on January 11 in St. Thomas More's Roman Catholic Church, New York City. Mrs. Moore is associated with Time, Inc. Mr. Moore is studying for his master's degree at Columbia Graduate School of Business.

Following graduation from the University of Pennsylvania Law School in May, HOWARD GREENBERG was awarded a Stevens Post-graduate Fellowship at the University of Sydney Law School, Sydney, Australia. He left for Australia on February 1 to begin his studies. Prior to this he worked six months for the Lawyers' Committee for Civil Rights Under Law as staff attorney with the Committee's Police Community Relations Project.

Announcement has been made of the engagement of SYLVIA JOHNSTONE to Razvigor Bazala, an alumnus of Newark College of Rutgers University. A Phi Beta Kappa graduate of the University of Georgia, Miss Johnstone received a master's degree from Johns Hopkins School of Advanced International Studies in Bologna, Italy and is an executive trainee in the Office of the Secretary of Defense. Mr. Bazala is studying for a master's degree in Russian studies at Johns Hopkins School of Advanced International Studies. A June wedding is planned.

1964

GEORGE F. INGERSOLL, JR. and Susan M. Smith, of Westmont, New Jersey, were married on October 22 in the Church of the Holy Saviour.

Following a honeymoon in Bermuda, the couple now reside in Philadelphia.

GERALD J. PISERCHIA, JR., is a junior at Temple University School of Medicine, Philadelphia.

Mrs. ROBERTA WILLIAMS FRANCIS, of Cambridge, Massachusetts, is employed as a copy-editor for Little, Brown and Company, publishers in Boston. Her husband is studying for a doctorate in physics at Harvard University.

Announcement has been made of the engagement of GEORGE HEMPHILL, JR. and Gail E. Mecke, an alumna of Gettysburg College. A March wedding is planned.

Mr. and Mrs. SKOTT B. BURKLAND, of Wilmington, Delaware, announced the birth of a daughter, Deborah Lynn, on November 18. On January 1, Skott joined the Industrial Relations Department of Sun Oil Company.

HAROLD A. BAIR, who is finishing a Peace Corps assignment in Ranau, Malaysia, is the author of an article on "Kapir, the Kadazan Religion, as Practiced in Bundu Tuhan" which appeared in the *Sabah Society Journal* in April 1966.

SAMUEL McH. WARLOW was appointed as a representative for the Travelers Insurance Company. His office is located in the State Street Building, 500 North Third Street, Harrisburg.

Mr. and Mrs. J. Stephen Huebner (BUNNY ZUG) announced the birth of a son, Christopher Converse, on October 26. In January they moved to Alexandria, Virginia, where her husband began working at the U. S. Geological Survey in Washington, D. C.

Announcement has been made of the engagement of KATHARINE E. BEST and John K. Stambolian, Jr., an alumnus of Millersville State College. Mr. Stambolian is an instructor at Cheyney State College.

ROBERT D. SCHWARZ will open an antique shop in March at Suburban Square. It is a branch of the shop he has in Philadelphia. Bob is also in officer candidate school at Indiantown Gap and expects to receive his commission in June.

Lt. JEFFREY L. STAMBAUGH was awarded a master's

degree in hospital administration from Duke University in June and entered the U. S. Army Medical Service Corps in July. After spending 17 weeks at the Medical Field Service School, Fort Sam Houston, Texas, he began an assignment as Administrative Officer for Professional Services at the Valley Forge General Hospital, Phoenixville. He and his wife live at Holly Court Apartments, 640 Nutt Road, Phoenixville.

Mr. and Mrs. THEODORE J. JOHNSON (KIM LARSEN, '66) of 229 Howard Avenue, Elberon, New Jersey, announced the birth of a daughter, Wendy Jill, on September 8.

JOHN B. TAYLOR, who is a candidate for his doctoral degree at Princeton, has been elected president of the student government at the Graduate College.

After spending two years in the Peace Corps in Kenya, JAMES FINUCANE is studying for a master's degree at the London School of Economics.

PHILIP S. WASHBURN, a senior at the Divinity School of Duke University, and Nancy L. Githens, an alumna of Duke University, were married on December 17 in York Chapel, Duke University Divinity School. The bride is a teacher at Mangum Elementary School, Bahama, North Carolina. The couple now reside at 1704 Hillcrest Drive, Durham.

CLARK McKNIGHT, II and Leslie A. Durkee, a senior at Connecticut College for Women, were married on December 17 in St. John's Episcopal Church, West Hartford, Connecticut. Clark is a sales representative for the Whitman Publishing Company. The couple now reside in Concord, New Hampshire.

Since his release from the Army, EDISON C. EATER has accepted a position with Merck Sharp and Dohme, a division of Merck and Company. His wife, the former JUDITH SCHENCK is teaching first grade in North Penn School District. The couple now reside at 207 Highland Avenue, Souderton.

1965

Mr. and Mrs. Lawrence Rand (DIANA DUPY, '66) announce the birth of their second child and first son, Lawrence Scott, on January 8, 1967. Larry is em-

ployed by the Gulf Oil Corporation and was recently honored as the top salesman in the Trenton district for 1966. He also won the Trenton Men's Tennis Tourney in August. The Rands recently moved to Queensgate A-121, Morrisville, Pennsylvania.

NICHOLAS M. LANGHART of Cleveland, Ohio, has completed work for his master's degree and is now studying for the Ph.D. program at the Case Institute of Technology with particular emphasis on urban development and planning.

Since completing all requirements for her master's degree in organic chemistry at Bryn Mawr College, FELICIA GASKIN is now in the Ph.D. program in biochemistry at the University of California, San Francisco Medical Center, where she has a teaching fellowship.

JAY F. SMITH, 3d, and Nancy-Lois Drexel, an alumna of Bennett College, were married on December 27 in the Church of the Redeemer, Bryn Mawr. The couple now reside in Heidelberg, Germany.

Announcement has been made of the engagement of FREDERICK H. ETHERINGTON to Priscilla V. Fox, a senior at Springfield College. A June wedding is planned.

ALEXANDRA DIMICH and Philip K. Hensel, III were married on January 21 in the Barkley Chapel of Grace Evangelical Lutheran Church, Camp Hill. Following a honeymoon in San Juan, Puerto Rico, the couple now live in the Camp Hill Plaza Apartments, May Drive. The groom is associated with Eastern Consolidation and Distribution Services, Inc.

GARRETT L. HEISHMAN, JR., who is serving in Vietnam, was recently promoted to a First Lieutenant. Prior to his overseas assignment, he completed a course at the Transportation School at Fort Eustis, Virginia. Lt. Heishman's address is 71st Trans Co. (Tml Svc), APO, San Francisco, California 96238.

PAUL CRAWSHAW and J. Louise Weldon, a Phi Beta Kappa graduate of William and Mary, were married on September 10. The couple now reside at 570 North 23rd Street, Philadelphia.

FRANK L. PALMER, JR. and Elizabeth A. Struck, an



*Eleanor Lindsey, '66
Assignment to Bolivia
in the Peace Corps*

alumna of Wellesley College, were married on September 10 in the Hyde Park Methodist Church, Chicago. Both Frank and his wife are attending graduate school at the University of Chicago.

Announcement has been made of the engagement of BARRY WARREN and Laura Scott, a member of the junior class. Barry is attending the Dickinson School of Law.

DAVID D. McCULLOUGH, Commanding Officer of Headquarters Company, 3d Armor Battalion, was promoted to a First Lieutenant in November. Upon completion of courses at the Armor School at Fort Knox, Kentucky, he was assigned to Germany. His address is Hq. Co. 3d Bn. 33d Armor, Ayers Kaserne, APO, New York, New York 09039.

JOHN H. NICHOLS, a student at Meadville Theological Seminary, is serving as minister of the Second Unitarian Church, Chicago.

JOSEPH R. HOFFMAN received a master's degree in art history at the University of Wisconsin this month.

IDA JANE SIA is teaching Spanish and reading in Lebanon, where she lives at 425 North 11th Street.

1966

Announcement has been made of the engagement of PHILIP P. McGARVEY and Susan H. Buckingham, a member of the senior class. Phil is attending the Berkeley Divinity School in New Haven, Connecticut.

GEORGE C. REINKE, JR. was commissioned an Ensign at the Naval Air Station, Pensacola, Florida after completing the Naval Pre-Flight School's 14-week Aviation Officer Candidate Course. He is now undergoing basic and advanced flight training.

WILLIAM T. HEWLETT has been commissioned a Second Lieutenant in the U. S. Air Force upon graduation from Officer Training School, Lackland AFB, Texas. He has been assigned to Mather AFB, California for navigator training.

Announcement has been made of the engagement of PATRICIA ANN KALISZ to John Charles Previdi, a doctoral candidate in

chemistry at the University of Connecticut. A June wedding is planned.

ROBERT T. MONTAGUE was commissioned an Ensign in the U. S. Navy following 16 weeks schooling at the Officer Candidate School, Newport, Rhode Island. He is now undergoing six weeks advanced training in communications at the First Fleet Training Center, San Diego, California. Upon completion of this training he will report for duty in the Operations Department aboard the USS Chicago (CG-11), a guided missile cruiser homeported in San Diego. His new address is USS Chicago, FPO, San Francisco.

RICHARD WOLF and Elizabeth Bishop, a member of the senior class, were married on December 29, in St. Andrews Episcopal Church, Ludwig's Corner, Philadelphia. Dick was commissioned in mid-January at the U. S. Naval Air Station, Pensacola, Florida and has entered flight training. The couple now reside in Pensacola.

Mrs. JO-ANNE ORENT HALPERN, of Carlisle, has been selected as a candidate for the Moot Court Board of the Dickinson School of Law for her excellence in oral argument and brief writing in the Middler Moot Court competition. A second year student, she is secretary of the Student Bar Association and publicity chairman of Phi Delta Delta, international women's legal honorary fraternity.

DAVID E. MANOOGIAN and JUDITH AUX were married on December 14 in Arlington, Virginia. Dave is a student at George Washington University National Law Center and Judy is a secretary to Lee Folger, Vice President of Folger, Nolan, Fleming & Co., Inc., investment banking and brokerage house. The couple now reside at 2130 N Street, N.W., Apt. 408, Washington 20037.

1968

SUE ELLEN KENT, who is presently attending Johns Hopkins Medical School under a special five-year program in which she will obtain both a bachelor's and an M.D. degree, was one of 21 students accepted for this program.



*Shirley Otis, '66
Assignment in the
State Department*

William T. Hewlett, '66



Obituaries

1894 The Rev. HEDDING BISHOP LEECH, former secretary of the Newark Conference of Methodist Churches, died on October 31 in Rahway, New Jersey at the age of 94. At the time of his death he was the oldest alumnus of Drew Theological Seminary. A Methodist minister for more than 70 years, Mr. Leech was 76 years old when he began his last ministry in 1948 at Mt. Hermon Methodist Church in Warren County. Joining the Newark Conference in 1898, he served as its secretary from 1923 to 1929. He decided upon retirement in 1941, but idleness was not for him and he became a supply pastor, serving churches in Newark, Paterson and Mt. Hermon. His active pastorates were in Verona, Hackensack, Allendale, Phillipsburg, Ridgefield Park, Staten Island, Elizabeth and several other churches. A Mason, he was a member of Beta Theta Pi Fraternity and a life member of the General Alumni Association. He is survived by two daughters and a son.

1901 The Alumni Office recently learned of the death of Mrs. MARY SHEETZ SAUL.

1901 The Alumni Office was recently notified of the death of EDMUND J. PRESBY in the Eagle Convalescent Center, Concord, New Hampshire on October 21, 1966 at the age of 88. A Phi Beta Kappa graduate of the College, he was a member of Phi Delta Theta Fraternity.

1904 Dr. ROLAND L. STACY, physician, surgeon and obstetrician for 57 years in Ogdensburg, New York, died November 23 in King City, California at the age of 83. A graduate of the Johns Hopkins University Medical School, he held membership in the American Medical Association, was a medical consultant for St. Lawrence County Welfare Staff of the Barton Hepburn Hospital, and a member of the staff of the St. Lawrence State Hospital. A Phi Beta Kappa graduate of the College,

he was a charter member of Kappa Sigma Fraternity. Dr. Stacy was a Mason, a member of the Shrine, an Elk and the Knights Templar. He is survived by his wife and a son.

1905 The Rev. EDWIN C. KEOCH, a retired Methodist minister died on December 3 in a nursing home in Sarasota, Florida at the age of 85. Rev. Keoch served 32 years as the executive secretary of the Central Pennsylvania Conference Board of education of the Methodist Church. He was dean of the Harrisburg Community Leadership Training School and one of the leaders of a movement which established classes in Christian Education in the Harrisburg public schools. He was prominent in establishing the Methodist Training Camp at Newton Hamilton in 1925 and served as chairman of the program committee. A trustee of the Methodist Home for Children in Mechanicsburg, Rev. Keoch also served as chairman of the Committee on Admissions. The College conferred the doctor of divinity degree upon him in 1945. The Keochs moved to Florida in 1948 where he served as director of Christian education in several large Methodist churches before his retirement. A life member of the General Alumni Association, he was quite active in the Southern Florida Alumni Club. He is survived by his wife and a sister.

1906 Dr. GILBERT H. JONES, former president of Wilberforce University, died in Chicago, Illinois on June 24, 1966. Dr. Jones earned his Ph.D. at the University of Jena, Germany, and was awarded an LL.D. from Howard University. After serving as vice president and president of Wilberforce, he was dean of the College of Education and Industrial Arts at Central State University until his retirement in 1962. An author of several books and magazine articles, Dr. Jones served on the National Advisory Board of the Public

Health Service in 1955. An ordained minister of the AME Church, he held memberships in the American Academy of Political and Social Sciences, the Association of Teachers of Psychology, Phi Gamma Mu, University Administrators and Kappa Alpha Psi Fraternity. He held membership on the advisory board of the Northeast Life Insurance Company. In addition to his wife, he is survived by a son and a daughter.

1910 LUCILE EVANS died in the Williamsport Hospital on October 31, 1966. An English teacher in the Williamsport area, she retired from teaching 15 years ago. She is survived by two sisters: WINIFRED EVANS, '15, and MIRIAM EVANS MORGAN, '17; and a brother.

1910 L. CRESTON BEAUCHAMP, former state senator and state's attorney in Somerset County, died on November 20 following a heart attack in Fayetteville, North Carolina, enroute to a Florida vacation, at the age of 78. A member of Beta Theta Pi, he was a graduate of the University of Maryland Law School. Mr. Beauchamp served as Somerset County state's attorney from 1915 to 1923 and was a state senator during the period 1927-33. He is survived by his wife, one son and two daughters.

1910 WILLIAM McINDOE, of Roanoke, Virginia, died on October 23 following a heart attack at the age of 79. He retired in 1952 as office manager of the Steel Building Products, Berger Manufacturing Company. Prior to this he was an agent for the New York Insurance Company. A member of Alpha Chi Rho, he was a Mason, a member of the Shrine, the Elks, the American Legion and the Travelers Protective Association. He is survived by his wife and a son, WILLIAM McINDOE, JR., '44.

1913 The Alumni Office has been notified of the death of Mrs. AIMEE FREY KULP in July.

1915 The Alumni Office has been notified of the death of VINCENT G. BELL on July 6, 1966. He is survived by his wife.

1919 THEODORE F. VAN SCOYOC died on December 2

in the Veterans Hospital, Lyons, New Jersey, at the age of 72. He was a member of the Masonic Lodge in Passaic, New Jersey, the Knight Templars of Newark and of Alpha Chi Rho Fraternity. He is survived by his wife, a son and a daughter.

1920 HAROLD H. SUENDER, former executive of the General Fireproofing Company, died of arteriosclerosis at his home in Youngstown, Ohio, after a lingering illness at the age of 66. He began his career with General Fireproofing in 1930 as manager of advertising and sales education, retiring in 1959 when he became ill. A member of the United Presbyterian Church, he also held membership in Kappa Sigma Fraternity. He is survived by his wife, two daughters and a son.

1921 Dr. WALTER A. KANN, of Oil City, died unexpectedly at his home in December at the age of 67. A former resident of Carlisle, he was a graduate of the University of Pennsylvania School of Dentistry. He was a member of the First United Presbyterian Church, the M. H. Cryer Society of Oral Surgery, the E.T.A. Fraternity, Venango County Dental Association, the American Dental Association, the Petrolia Lodge No. 363, F. and A. M., Venango Lodge of Perfection, Coudersport Consistory, Oil City Royal Arch Chapter and the Talbot Commandery. He is survived by his wife and three brothers.

1926 EARL M. SCHROEDER, of York, died on July 23, 1966 in the York Hospital. He was the permanent reunion chairman of his class and had presided at the Class' 40th reunion breakfast at the College on June 4. Until an illness forced his retirement some years ago, he was the manager of the Philadelphia office of the Mosler Safe Company and before that was plant manager of the York Safe and Lock Company. A member of Beta Theta Pi, he was a Lutheran and a Mason, and a past state president of the Sons of the American Revolution. He is survived by his wife, a daughter and a brother.

1927 FRANK B. WARFEL, district attorney of Blair County for six years, died October 16,

1966 in the Altoona Hospital following a heart attack at the age of 63. Elected district attorney in 1959, he previously served 16 years as assistant district attorney. A graduate of the Dickinson School of Law, he was admitted to the bar in 1930 and practiced law in Blair County since that time. He was a member of the Trinity United Church of Christ, the Logan Lodge, F. and A.M., Mountain Chapter, Royal Arch Masons, Mountain Council and Commandery, Jaffa Shrine and served 25 years as treasurer of the Square and Compass Club.

1927 THEODORE F. BOWES, former U. S. Attorney for the Northern District and State Public Commissioner, died on January 8 in the State University Hospital, Syracuse, New York, following a heart attack at

the age of 62. Mr. Bowes was named U. S. Attorney in 1953 by President Eisenhower and resigned in 1960. In 1961, Governor Rockefeller appointed him to the Public Service Commission to which he was reappointed in 1963. A graduate of Syracuse University Law School, he was engaged in private law practice and taught law at Syracuse University from 1936 to 1953. A life member of the General Alumni Association, Mr. Bowes was a member of Phi Delta Theta Fraternity, and held membership in the American, New York State and Onodaga County Bar Associations. He is survived by his wife, a brother and two sisters.

1929 FRANK GODFREY McCREA, co-owner of the J. P. Bixler and Sons Hardware Store,

died in the Carlisle Hospital on July 12 at the age of 57. A member of Phi Kappa Psi Fraternity, he was also a life member of the General Alumni Association. Mr. McCREA was a past president of the board of trustees of the Second Presbyterian Church, where he served as an elder. He held memberships in the Pennsylvania and Atlantic Seaboard Hardware Association, the National Retail Hardware Association and the American Hardware Supply Association. He was also a member of the Cumberland Star Lodge 97 F. and A.M., the Rotary Club, Elks, the Carlisle Chamber of Commerce, the YMCA and a member of the board of directors of the Greater Carlisle Area United Community Fund. He is survived by his wife, a son and a daughter.

1931 LEO F. DODSON, attorney of Altoona, died unexpectedly after a brief illness in Mercy Hospital on December 23 at the age of 57. A member of Phi Beta Kappa at the College, he graduated from the Dickinson School of Law in 1935 and was admitted to the Blair County Bar Association. In 1938 he served in the Pennsylvania Bureau of Employment Security in Altoona. In 1950 Mr. Dodson served as editor of the Blair County Legal Bulletin. He was associated with the Haberstroh law firm in Altoona. He is survived by his wife, a daughter and a son.

1936 The Alumni Office recently learned of the death of DONALD D. RUST, of Cohasset, Massachusetts, in August. Death was due to a heart attack.



Dr. Everett F. Hallock, '30

1930 The Rev. Dr. EVERETT F. HALLOCK, retired Methodist minister and former Newark, New Jersey district superintendent of the Methodist Church, died on January 7 in the Hialeah, Florida, hospital following a heart attack at the age of 59. Dr. Hallock spent 30 years in the ministry in Northern New Jersey and Texas before his retirement as pastor of Little Falls, New Jersey Methodist Church in 1963 due to poor health. A graduate of Drew Theological Seminary in 1933, he was ordained the same year and began his pastorate at Hilton Church, Maplewood. Fol-

lowing pastorates in the Orange and Rutherford Methodist Churches, he was appointed superintendent of the Newark District in 1949, serving until 1954 when he became pastor of Vincent Methodist Church, Nutley, one of the largest in the conference. In 1956, Dr. Hallock went to Dallas, Texas as Southwestern representative of the American Leprosy Missions, Inc., returning to Little Falls Church in 1960. During the summer of 1955 he took part in an international exchange program preaching in England, Scotland

and Ireland. A member of Beta Theta Pi Fraternity, he was a life member of the General Alumni Association and was awarded a doctor of divinity degree on the occasion of Dickinson's 175th anniversary. Dr. Hallock was a past president of the Essex County Council of Religious Education, served on the Board of Education of Newark Methodist Conference and the Lay Society of the New Jersey Diabetes Association, and chairman of the Board of Ministerial Training of the Newark Conference. He is survived by his wife, two sons, DONALD, '54, and Elbert, and a brother.

Friends of the Dickinson College Library, and particularly those who have watched with interest the growth of its research collections, will be saddened to learn of the death of Samuel Moyerman, December 5, 1966. To him and to his family we are indebted for hundreds of valuable books, and literally thousands of manuscripts. Outstanding among the former are a large number of legal works from the Protectorate to mid-eighteenth century (including one inscribed by John Dickinson when a law student in London) and a collection of Pennsylvania-German imprints which, when catalogued, will give us for the first time a respectable standing in this area. Among the manuscripts are the Papers of David Watts Hulings

of our Class of 1851, lawyer and ironmaster, a collection of letters and documents of the Governors of Pennsylvania from Penn to Pennypacker (a gift of Mr. and Mrs. Barry Moyerman), and a "Moyerman Collection," gradually being assembled, of statesmen, authors, artists, military and civilian leaders of Europe and America.

Lawyers have their own feeling for the record. It is a profession in which book and autograph collectors abound. Mr. Moyerman, born in Philadelphia, November 19, 1893, graduated from the Law School of the University of Pennsylvania in 1916. As a young lawyer, unable to afford high-priced single items, he bought mass lots from estates and other sources, in which he

found the additional pleasures of search and discovery. For a time he issued catalogues as The Philadelphia Autograph Company, thus profitably reducing what had become an almost overwhelming mass of scholarly materials. Finding that this took valuable time from his law practice, he began instead to distribute whole collections of materials to ours and other libraries as he felt appropriate.

Sam Moyerman is remembered with affection and respect by a wide circle of bookmen and librarians. He had, as may be imagined, an endless fund of anecdotes, and the value of his collections is heightened by the fact that, but for his intervention, many would have been destroyed.

On one occasion, for instance, driving through the old part of Philadelphia, he happened to notice smoke pouring from the chimney, and a gleam of fire through the cellar window of an apparently deserted house. In the cellar he found two men cramming eighteenth century papers into a furnace. He promptly handed one of them a sheaf of ten-dollar bills, directing him to burn these too. Having thus dramatized the value of what was going up in smoke, an accommodation was speedily reached with workmen and owners, and the surviving papers brought to 1815 Spruce Street. For this lawyer's feeling for the records of the past our world of scholarship must always be grateful.

Special Mention

San Miguel citizens were joined by special guests from throughout the Philippines in a farewell ceremony for Captain and Mrs. Frank M. Romanick. Capt. Romanick, '47, commanded the U. S. Naval Communication Station for 27 months. He moves on to another assignment.



Frank Romanick, '47 Awarded Legion of Merit Medal During Change of Command

Moro Drum in foreground is symbol of communication.



Giant improvements have been made in communications since the Moro Drum first throbbed announcements of social activities throughout the Philippines. For his part in elevating the level of proficiency to a plateau "never before reached by a Naval Communication Station," according to Rear Admiral Herman Kossler, Commander of Naval Activities in the Philippines, Captain Frank M. Romanick received the Legion of Merit during change of command ceremonies at San Miguel. Another factor in the unusual business of receiving a medal upon being relieved was "the excellent people-to-people program Capt. Romanick had developed and administered to." (Dickinsonians will recall an article on Capt. Romanick in the Winter 1965 *Alumnus* which dealt with his creating the first summer camp for Boy Scouting in the Philippines.)

Capt. Romanick also received the

Real Time Award, emblematic of the twenty-eight million messages processed during his 26 month tour. As mementos he takes with him a wooden bell given to him by the staff in an orphanage in Vietnam and flags of America and the Philippines which were historically involved with the Bataan Death March.

Capt. Romanick was born in Wilkes-Barre and after Dickinson took post-graduate work at the U. S. Naval Academy. His numerous other commands included the Destroyer *INGERSOLL* and *EVERSOLE* and the Explosive Ordnance Disposal School. He served as navigator of the battleship *NEW JERSEY* and commanded Destroyer Division Ninety-two.

Capt. Romanick has a daughter, Suzanne, presently attending the University of Denver. He is now assigned to command of the national command ship *USS WRIGHT*.

The General Alumni Association

President

Samuel J. McCartney, Jr., Esq., '41

Vice President

Robertson C. Cameron, '28

Secretary

Mary Mackie Eshelman, '43

THE ALUMNI COUNCIL

Term expires in 1967

Virginia Watts, '24

Robertson C. Cameron, '28

(Vice President)

Mrs. Helen Dickey Morris, '33

Samuel J. McCartney, Jr., Esq., '41

(President)

Mrs. Mary Mackie Eshelman, '43

(Secretary)

Rev. Ralph L. Minker, Jr., '47

Rev. Kermit L. Lloyd, '52

Douglas McPherson, '64

Term expires in 1968

G. Harold Keatley, Esq., '27

Austin W. Brizendine, Esq., '39

Mrs. Mary Kirkpatrick Breene, 40

Catherine S. Eitemiller, '46

John D. Hopper, Esq., '48

Sidney D. Kline, Jr., Esq., '54

Thomas V. Zug, Esq., '33

Andrew Y. Rogers, Jr., '65

Term expires in 1969

Fred A. Lumb, '29

Harry E. Hinebaugh, '34

George G. Lindsay, Esq., '48

Dr. Hampton P. Corson, '49

George C. Hering, III, Esq., '53

Constance W. Klages, '56

Robert E. Young, '59

Bradley B. Geist, '66

THE ALUMNI TRUSTEES

Weston C. Overholt, Jr., Esq., '50

Winfield C. Cook, '32

Mrs. Katherine Smith Carpenter, '25

Professor Roy R. Kuebler, Jr., '33

DIRECTORY OF ALUMNI CLUBS

CALIFORNIA

LOS ANGELES. President Joseph S. Stephens, '26, 5315 Garth Ave. 90056

SAN DIEGO. President Mrs. Sanford Sweet, '52, 10005 S. Cole Rd., Whittier, 90603

SAN FRANCISCO. President Mrs. Robert E. Bernard, '48, 83 Silverwood Drive, Lafayette, 94549

COLORADO

DENVER. President George F. Barbary, 44, Box 658, G. Route #3, Golden, 80401

CONNECTICUT

HARTFORD. President Robert B. Cohen, '54, 25 Northbrook Dr., West Hartford, 06100

DELAWARE

WILMINGTON. President Ohrum J. Small, '15, 48 Baynard Blvd., 19803

DISTRICT OF COLUMBIA

WASHINGTON. President Walter E. Beach, '56, 5719 Chevy Chase Parkway, N.W., 20015

FLORIDA

FLORIDA GULF COAST. President Joseph Miele, '59, 6414-28 Terrace N. Street, St. Petersburg, 33710

MIAMI. President Arthur A. Pendleton, '48, 6871 SW 76th Terrace, 33143

ILLINOIS

CHICAGO. President William Ragolio, '35, 1500 W. Monroe St., 60607

MARYLAND

BALTIMORE. President H. Chase Davis, '50, 224 W. Lafayette Ave., 21217

OCEAN CITY (Del-Mar-Va). President Kendall K. McCabe, '61, Smith Island, 21824

MASSACHUSETTS

BOSTON. Charles A. Ferrone, '57, 108 Clark Rd., Needham, 02192

MICHIGAN

ANN ARBOR. President Donald E. Shapiro, '53, 352 E. Huron River Dr., 48103

NEW JERSEY

DELAWARE VALLEY. President Walter Benner, '47, 525 William St., Trenton, 08600

NEW YORK ALUMNAE. President Ruth Cain Connor, '30, 755 W. Broad St., Westfield, New Jersey, 07090

NORTHERN NEW JERSEY. President Laurence V. Radtke, Jr., '54, 299 Springfield Ave., Berkeley Heights, 07922

SOUTHERN NEW JERSEY. President Ronald Goldberg, '54, 111 Rich Ave., Berlin, 08009

NEW YORK

NEW YORK CITY. President Robert J. Weinstein, '50, 272 Hewes St., Brooklyn, 11211

ROCHESTER. President Holland Taylor, '48, 170 Non Hill, 14617

SOUTHERN TIER. President Charles F. Saam, '43, 101 Gilmore Ave., Hillcrest, Binghamton, 13900

SYRACUSE. President Robert J. Thomas, '40, 333 Roosevelt Ave., 13200

OHIO

CLEVELAND. President Thomas B. Price, '60, 14619 Clifton Blvd., Lakewood, 44107

COLUMBUS. President Robert A. Aaronson, '43, Seneca Hotel, 361 E. Broad St., 43215

PENNSYLVANIA

BERKS—READING. President Sidney D. Kline, Jr., '54, 46 Wyomissing Hills Blvd., Wyomissing Hills, Reading, 19600

HARRISBURG. President James W. Evans, '51, 2301 Oakwood Road, 17104

LEHIGH VALLEY. President Kenneth L. Harvey, '53, 302 Walnut St., Cata-sauqua, 18032

NORTHEASTERN PENNSYLVANIA. President Mrs. Esther C. Teller, '32, 181 N. Franklyn St., Wilkes-Barre, 18700

PHILADELPHIA. President Robert M. Brasler, '58, 1504 Pine St., 19102

PITTSBURGH. President Daniel B. Winters, '49, 293 Old Farm Rd., Mt. Lebanon, 15228

WEST BRANCH VALLEY. President Frank W. Ake, '31, 441 Pine St., Williamsport, 17701

YORK. President J. Richard Budding, '32, 124 E. Market St., 17400

Come back to the Campus
for

ALUMNI DAY

Saturday, June 3

COMMENCEMENT

Sunday, June 4



REUNION CLASSES

'07	'12	'17	'22
'27	'32	'37	'42
'47	'52	'57	'62

THE DICKINSON ALUMNUS
Dickinson College
Carlisle, Pa.

Second Class Postage Paid at Carlisle,
Pennsylvania. Return Requested