

# Dickinson College Archives & Special Collections

<http://archives.dickinson.edu/>

## Documents Online

**Title:** Dickinson vs Swarthmore Football Program (Oct. 1936)

**Date:** October 24, 1936

**Location:** Dickinsoniana Programs

### Contact:

Archives & Special Collections  
Waidner-Spahr Library  
Dickinson College  
P.O. Box 1773  
Carlisle, PA 17013

717-245-1399

[archives@dickinson.edu](mailto:archives@dickinson.edu)

**OFFICIAL PROGRAM**



**SWARTHMORE**

**vs DICKINSON**

**PRICE 10c**



Again in 1936 — the Spalding Official J5V will play a big part in putting the nation's gridiron engagements on the front page. Of course, we can't predict the outcome of today's game . . . but we can predict that the J5V will give a good account of itself in contests the country over. In past performances the J5V has proven its ability to take everything a hard kicking, fast playing team can give it . . . Yes, take it and come back for more.

Local Spalding Dealer  
**HEILMAN AND STEVENS**  
 6 North Hanover St.

# ROOSEVELT

SCORED FOR THE LABORER,  
 THE FARMER AND BUSINESS

*Elect him CAPTAIN  
 for another four years*

On November 3, 1936

1885 — Dickinson's Fifty-second Football Season — 1936

---

# 1936 FOOTBALL PROGRAM



PUBLISHED BY THE DICKINSON COLLEGE ATHLETIC BOARD

Nicholas Brango,  
*Editor*

George M. Stine,  
*Business Manager*

# THE OLDTIMERS

## WERE PRETTY GOOD, TOO!

The immortal Charley Brickley of Harvard still holds most of the records for drop-kicking field goals. During the 1913 season, he kicked 13, five of which were against Yale. During his career, Brickley booted 26 field goals.

Only two other varsity men have kicked five in one game. Walter Eckersall of Chicago turned the trick twice, once against Illinois in 1905 and a year later against Nebraska. B. W. Trafford of Harvard, Brickley's predecessor, made five against Cornell in 1890.

The longest field goal from placement was a 65-yard boot which Jim Haxall of Princeton kicked against Yale in 1862. Mark Payne of Dakota Wesleyan holds the drop-kick mark, a 63-yard kick against Northwest Normal in 1915.

Champion extra point kicker is Arlo Davis of Oklahoma who made 23 in one game against Kingfisher in 1917.

Jim Thorpe of the Carlisle Indians still holds the record for scoring the most points in a season. Jim rolled up 198 in 1912.

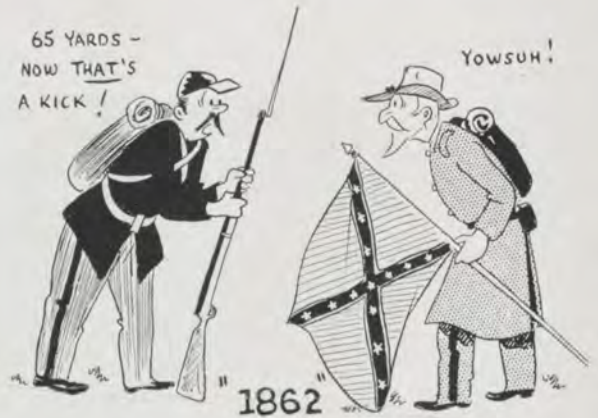
Jimmy Leach, something of a modern, of Virginia Military Institute, holds the record for touchdowns in a single season. In 1920, he crossed the goal line 26 times.

The longest run from scrimmage on record was that of Wyllys Terry of Yale who romped 115 yards for a touchdown against Wesleyan in 1884. The run never will be equalled because the field in those days was 110 yards long. Terry started five yards behind his own goal line.

Ed Burke of Mississippi, another comparative modern, holds the record for run-back of a kickoff. Against Alabama in 1931, he returned a kickoff 109 yards to a touchdown.



CHARLEY BRICKLEY MADE MOST DROP-KICKING RECORDS IN 1913.



KNOCK! KNOCK! *Who's There?*

KEY MAN! *Key Man Who?*

Keyman and Give Us Some Business

*Locksmith, Upholsterer, Leather Worker*

## DIFFENDERFER'S

45 N. PITT STREET

ATLANTIC WHITEFLASH PLUS

*Lubrication — Oil*

## Mooreland Filling Station

(Next to Biddle Field)

(Tasty Hot Dogs and Drinks Served  
During Game)

CARLISLE, PA.

GEO. W. EPPLEY, *Prop.*

*"Friendly Service"*

## OFFICE EQUIPMENT COMPANY

202 WALNUT STREET  
HARRISBURG

COMPLIMENTS

OF THE

CARLISLE  
HYGIENIC ICE COMPANY

## SHENK & TITTLE

Everything for Sports

313 MARKET STREET  
HARRISBURG, PENNA.

EARLEY'S

*for*

FINE FURNITURE  
FLOOR COVERINGS

FOR RECREATION

KOKOLIS BROS.

*Billiards*

# A VOTE OF THANKS



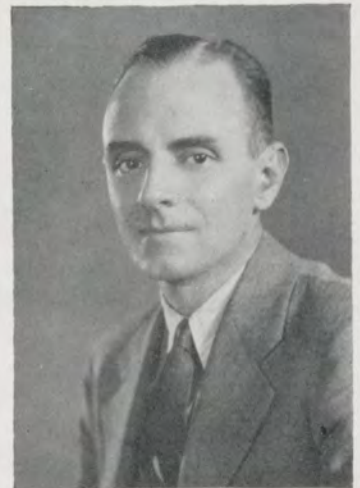
TO HEAD COACH ARTHUR D. KAHLER—The team he produced during the season of 1935, his first year at Dickinson, won the admiration of not only the team, but the entire school.



TO PRESIDENT FRED P. CORSON—His keen interest in athletics, particularly football, has been a great aid in reviving the old Dickinson spirit and will to win.



TO MR. CHAS. L. SWIFT — Dickinson's director of publicity, who does a fine job of keeping the public conscious of the fact that Dickinson teams are going to the top.



TO DOCTOR H. E. ROGERS—DICKINSON'S graduate manager of athletics, to whom the credit is due for the fine management of Dickinson's athletic policies.

## Harrisburg Harness & Supply Co.

Umbrellas, Trunks and Leather Goods

*Trunks and Leather Goods Repaired  
Umbrellas Recovered and Repaired*

For Luggage and Leather Goods —  
Come to the Leather Store

Second and Walnut Streets, Harrisburg, Pa.

*Telephone 3-1128*

*Carlisle's Most Central Garage  
and Service Station*

## R. H. BLACK

PACKARD

DE SOTO

PLYMOUTH

23 North Pitt Street  
Opposite the Post Office

*"One Stop for Everything"*

## COCHRAN & ALLEN

HARDWARE

*and*

SPORTING GOODS

22-24 S. Hanover St.

## GOODYEAR BROTHERS

*Dealers in*

COAL AND BUILDING MATERIALS

*Office:* 104 South Hanover Street

## Dairy Inn Restaurant

Quality Food

Hot Bar-B-Q

Gigantic Milk Shake

SPERO ALEXANDER, *Prop.*

125 W. High St., Carlisle

SHOE REBUILDING  
*of FINER QUALITY*

*Free Call and Delivery Service*

## S. MARSHALL GREASON

16 S. Pitt St.

## JOHN M. PLOUGH

REAL ESTATE

*and*

INSURANCE AGENCY

12 South Dickinson St.

*You Always Meet Your Friends at*

## WERTZ SODA FOUNTAIN

AND

LUNCHEONETTE GRILL ROOM

*Phone 561*

High and Pitt Sts., Argonne Bldg.



# KRUGER DAIRY

CARLISLE'S LEADING DAIRY SINCE 1919

J. NORTON KRUGER, *Prop.*

---

## YELLOW CAB LINES

HARRY P. BREEN, *Prop.*

**TAXI** CALL  
362

CITY LIMITS 25c

For One to Five Passengers

DAY OR NIGHT

*Service — Anywhere — Any Time*

KODAKS • CANDY • DRUGS • SODA

•

## CARTER'S DRUG STORE

152 SOUTH HANOVER STREET

---

## THE CARLISLE INN

LUNCHES *and* DINNERS

From 45c to \$1.00

DELIGHTFUL ROOMS

From \$1.50

At Entrance to Carlisle Barracks

## HEINZE DAIRY STORE

*Complete Food Service*

OPEN FROM 7 A.M. TO MIDNIGHT

•

21 SOUTH HANOVER STREET

---

DICKINSON HEADQUARTERS IN HARRISBURG

THE NEW

## PLAZA HOTEL

SERVICE A LA CARTE

Opposite Penna. R. R. Station



Coach: "OK Boys - You Can Let Him Go in Now!"

## DICKINSON'S 1936 SQUAD



Left to right, first row — D. Weimer, Shuman, Asin, Hertzler, K. Weimer, Padjen, Gusic, Wiley.  
Second row — C. Binder, Shore, Grainger, Reese, Adams, C. Hendrickson, Bill Hendrickson, Bittle.  
Back row — Englert, Oberdick, Headington, H. Binder, Lindsey, Larson, Kinney, Shenk.

J. RODNEY FICKEL

GENERAL INSURANCE

SHEARER DRUG BUILDING  
CARLISLE, PA.

SMART COLLEGE PEOPLE  
SELECT FOOTWEAR

*from*

DUTREY'S SHOES

26-28 N. HANOVER STREET

BEST IN THE CITY

## PEOPLE'S COAL COMPANY

(FORMERLY GREEN'S)

Phone 730

FAMOUS D. & H. CONE CLEANED ANTHRACITE  
BITUMINOUS and STOKER COAL  
SLAB and FIREPLACE WOOD

405 N. EAST STREET

R. E. (Dick) CHARMBURY, Prop.

# DICKINSON COLLEGE FOOTBALL ROSTER 1936

No.	Player	Position	Age	Wt.	Ht.	Prep School	Home
1	Hertzler, Gilbert	End	19	150	6:0	High School	Carlisle, Pa.
4	Padjen, Sam	Back	19	155	5:8	High School	Steelton, Pa.
4	Englert, Lynn	End	21	154	5:11	High School	Belrich, Pa.
5	Weimer, David	Back	22	154	5:7	High School	Shamokin, Pa.
6	Shuman, George	End	21	180	6:1	High School	Jersey Shore
7	Grainger, Robert	Guard	21	163	5:11	High School	Nesquehoning
8	Larson, Carl	Back	23	169	6:0	High School	Hamden, Conn.
10	Shore, Ray	Back	19	165	5:9	High School	Brooklyn, N. Y.
11	Wiley, Howard	Guard	19	157	5:7	High School	Upper Darby, Pa.
12	Binder, Carl	Back	21	160	5:11	High School	Pottstown, Pa.
13	Binder, Harold	End	21	160	5:11	High School	Pottstown, Pa.
14	Frederick, Jack	Center	24	168	6:0	Mercersburg	Carlisle, Pa.
16	Lindsey, Richard	Guard	19	162	5:10	High School	Carlisle, Pa.
17	Adams, Harold	Back	20	188	5:11	High School	Carlisle, Pa.
18	Hendrickson, Wm.	End	19	175	6:0	Harrisburg Academy	Harrisburg
19	Hendrickson, Cl.	Guard	24	179	6:0	Harrisburg Academy	Harrisburg
20	Gusic, Joseph	Guard	22	175	6:0	High School	Shamokin, Pa.
23	Oberdick, William	Tackle	24	210	6:0	Harrisburg Academy	Harrisburg
24	Asin, Herman	Tackle	21	184	6:0	High School	Atlantic City, N. J.
25	Shenk, Carney	Back	19	153	5:9	High School	Harrisburg, Pa.
26	Reese, William	Tackle	19	185	5:11	High School	Kingston, Pa.
27	Weimer, Kinzie	Back	19	162	5:7	High School	Shamokin, Pa.
28	Yoh, Curt	Back	20	152	5:10	High School	Chambersburg, Pa.
30	Headington, Wm.	Back	20	160	5:11	High School	Palmyra, N. J.
32	Smith, Harold	Back	22	145	5:8	High School	Windber, Pa.
33	Kinney, James	Guard	19	160	5:8	High School	Plymouth, Pa.
35	Bittle, Austin	Tackle	19	179	6:1	High School	Schuylkill Haven, Pa.

## THE CHOCOLATE SHOP

*Fine Candies*

SODAS

SANDWICHES

35 West High Street

## J. P. BIXLER & SONS

*Hardware*

Carlisle, Pa.

## FRED B. HARRY

*Hatter — Haberdasher*

Corner 3rd and Locust St.

Harrisburg, Pa.

Harrisburger Hotel Building

Have You Tried

## MARTIN'S CAFE

*Food Specialists*

WINES — LIQUORS

433 Market St., Harrisburg, Pa.

# A Tribute to Football

by Grantland Rice

## SWARTHMORE

1 Thomas, c    27 McCormack, b  
 2 Roy, g        28 Carrol, b  
 3 Warrington, e    30 Huhn, b  
 4 Anfinsen, t    31 Cooper (C.), b  
 7 Kirschlager, b    34 Budd, g  
 8 Snyder, g    35 Sacks, c  
 9 McCone, g    36 Clark, b  
 10 Starr, e    37 Heavenrich, e  
 11 Stone, g    38 Perkins, e  
 12 Fowler, g    40 Jones, b  
 13 Snyder, g    41 Eberle, b  
 16 Morrissett, t    42 Hafkenschiel, b  
 20 Spruance, t    44 Weltmer, e  
 21 Krattenmaker, e    45 Mawhinney, t  
 22 Hutson, c    46 Hartman, b  
 23 Prentice, g    49 Jakle, b  
 24 Larkin, b

## DICKINSON

1 Hertzler, e    18 Hendrickson, e  
 Englert, e    19 Hendrickson, g  
 4 Padjen, b    20 Gusic, g  
 5 Weimer, b    23 Oberdick, t  
 6 Shuman, e    24 Asin, t  
 7 Grainger, g    25 Shenk, b  
 8 Larson, b    26 Reese, t  
 10 Shore, b    27 Weimer, b  
 11 Wiley, g    28 Yoh, b  
 12 Binder, b    30 Headington, b  
 13 Binder, e    32 Smith, b  
 14 Frederick, c    33 Kinney, g  
 16 Lindsey, g    35 Bittle, t  
 17 Adams, b

Blocking backs and interference—  
 Fifty thousand wild adherents—  
 Tackle thrusts and headlong clashes,  
 Two yard bucks and dizzy dashes,  
 Spiral punts and forward passes,  
 Run the end and hit the line,  
 Driving on by leg and spine,  
 Head and shoulder, heart and soul,  
 Till you fall across the goal.

## SWARTHMORE vs DICKINSON

### PROBABLE LINE-UP

#### SWARTHMORE

3 Warrington . . . . . LER . . . . . Shuman 6  
 4 Anfinsen . . . . . LTR . . . . . Oberdick 23  
 12 Fowler . . . . . LGR . . . . . Grainger 7  
 1 Thomas . . . . . C . . . . . Frederick 14  
 34 Budd . . . . . RGL . . . . . C. Hendrickson 19  
 20 Spruance . . . . . RTL . . . . . Asin 24  
 38 Perkins . . . . . REL . . . . . W. Hendrickson 18  
 36 Clark . . . . . Q 25 Shenk or Larson 8  
 41 Eberle . . . . . LHR . . . . . Shore 10  
 31 Cooper (C) . . . . . RHL . . . . . C. Binder 12  
 46 Hartman . . . . . F . . . . . Padjen 4

#### DICKINSON

### OFFICIALS

J. R. Lehecka . . . . . Referee  
 Clarence Beck . . . . . Umpire  
 G. C. Coleman . . . . . Head Linesman

And another all-star eleven—

**T-H-E-Y-S-A-T-I-S-F-Y-**

*Chesterfield*

## SWARTHMORE SQUAD

No.	Name	Pos.	Wt.	Ht.	Age	Prepared at	Home Town
1	Thomas . . . . .	Center	175	6:0		Port Washington H. S.,	Port Washington, N. Y.
2	Roy, Albert . . . . .	Guard	165	5:8	19	New Bedford H. S. . . . .	New Bedford, Mass.
3	Warrington . . . . .	End	170	5:11		Tamaqua H. S. . . . .	Abington, Pa.
4	Anfinsen, Chris . . . . .	Tackle	188	6:1	20	Upper Darby . . . . .	Upper Darby
7	Kirschlager, Hellmuth	Back	160	6:1	19	Buchtel H. S. . . . .	Akron, Ohio
8	Snyder, P. . . . .	Guard	155	5:9		Haverford School . . . . .	Swarthmore, Pa.
9	McCone, Henry . . . . .	Guard	155	5:7	18	Haddonfield H. S. . . . .	Haddonfield, N. J.
10	Starr . . . . .	End	160	6:0		Beaver Falls H. S. . . . .	Beaver Falls, Pa.
11	Stone . . . . .	Guard	165	5:10		Marquard School . . . . .	Brooklyn, N. Y.
12	Fowler, Ward . . . . .	Guard	170	5:9	21	Eldora High . . . . .	Eldora, Ia.
13	Snyder, A. . . . .	Guard	155	5:9		Haverford School . . . . .	Swarthmore, Pa.
16	Morrissett, Irving . . . . .	Tackle	178	6:2	20	Steele H. S. . . . .	Dayton, Ohio
20	Spruance, Frank . . . . .	Tackle	190	6:0	21	Friends Centr. . . . .	Elkins Park, Pa.
21	Krattenmaker, Herman	End	148	5:7	18	Collingswood H. S. . . . .	Collingswood, N. J.
22	Hutson, Frank . . . . .	Center	168	5:11	19	Bronxville H. S. . . . .	Bronxville
23	Prentice, William . . . . .	Guard	155	5:11	21	Nichols School . . . . .	Buffalo, N. Y.
24	Larkin, Dick . . . . .	Back	155	5:10	19	Haveshill H. S. . . . .	Georgetown, Mass.
27	McCormack, Robert . . . . .	Back	135	5:7	18	Sheboygan H. S. . . . .	Sheboygan, Wis.
28	Carrol, Wm. . . . .	Back	140	5:8	20	Urbana High . . . . .	Urbana, Ill.
30	Huhn, John . . . . .	Back	175	5:9	19	George School . . . . .	Collingswood
31	Cooper (Capt.), Ben . . . . .	Back	158	5:8	21	Moorestown H. S. . . . .	Marlton, N. J.
34	Budd, Walter . . . . .	Guard	235	5:8	18	Wenona Mil. Acad. . . . .	Camden, N. J.
35	Sacks, Isadore . . . . .	Center	179	5:6	18	Chester H. S. . . . .	Chester, Pa.
36	Clark, Jas. . . . .	Back	140	5:5	21	Bronxville H. S. . . . .	Bronxville
37	Heavenrich, Richard . . . . .	End	154	5:11	20	Cranbrooke School . . . . .	Bloomfield, Mich.
38	Perkins, Dudley . . . . .	End	171	5:9	21	Moorestown Frs. . . . .	Moorestown
40	Jones, Wellington . . . . .	Back	162	6:1	19	University H. S. . . . .	Chicago, Ill.
41	Eberle, Howard . . . . .	Back	160	5:11	19	Chestnut Hill Acad. . . . .	Philadelphia, Pa.
42	Hafkenschiel, Joseph . . . . .	Back	155	5:11	20	Rayen High . . . . .	Youngstown, Ohio
44	Weltmer . . . . .	End	170	6:0		Springfield H. S. . . . .	Rochester, N. Y.
45	Mawhinney, Thomas . . . . .	Tackle	190	6:3	17	Moorestown H. S. . . . .	Maple Shade, N. J.
46	Hartman, Arthur . . . . .	Back	190	5:10	18	Chester High . . . . .	Chester, Pa.
49	Jakle, Ed . . . . .	Back	155	6:0	18	Flagstaff H. S. . . . .	Flagstaff, Ariz.

### AFTER THE GAME

SHOP AT

## SHEARER'S DRUG STORE

THE REXALL STORE

*For Refreshing*

SODA, DRINKS or BREYER'S ICE CREAM

Whitman and Liggett's Chocolates

## CAROLINE S. CAPPIELLO

*Insurance and Real Estate*

NOTARY PUBLIC

32 WEST HIGH STREET

CARLISLE, PA.

COMPLIMENTS OF

## THE FROG, SWITCH & MANUFACTURING COMPANY

CARLISLE, PENNA.

*Compliments*

## **WEAVER and EPPLEY**

CUT RATE STORE

17 West High Street

Carlisle, Pa.

ALWAYS RELIABLE

# *Doutrichs*

CLOTHES

Harrisburg, Pa.

## **CENTRAL PENNA BUSINESS COLLEGE**

*"Central Pennsylvania's  
Greatest Business School"*

323 Market Street Harrisburg, Pa.

DAY and NIGHT SCHOOL

*"It pays to attend a school with an  
established reputation"*



## **THE TROY LAUNDRY**

*Cleaners and Dyers*

134 North West Street, Carlisle, Pa.

Phone 121

## **DICKINSON COACHES**



Left to Right: Richard MacAndrews, Harry Cryster, Head Coach Arthur D. Kahler, Karl "Dick" Radley, Robert R. Bartley

# BOWMAN & COMPANY

ALBERT WATSON, *Prop.*

South Hanover Street — Carlisle

## Carlisle's Best Department Store

*The Place to Get Good Quality Merchandise at Reasonable Prices*

---

*General Washington  
Had Definite and  
Good Reasons for  
Selecting Valley  
Forge for His Win-  
ter Headquarters  
in 1776 —*

BUT NO MORE THAN  
YOU HAVE FOR MAKING  
**THE VALLEY FORGE HOTEL**

Norristown, Pa.

### YOUR HEADQUARTERS

*When Visiting*

MONTGOMERY COUNTY IN 1936

- 125 Cheery Outside Rooms
- Spacious Lounge
- Tasty Dinners
- Modest Charges
- Hotel Completely Fireproof
- 30 Minutes to Philadelphia

*Visit*

## FRYCKLUND'S BAR-B-Q

South College St.

CURB AND TABLE SERVICE

---

## O. DECKMAN & SON

*Bus*

*Transportation*

LONG-DISTANCE MOVING

Carlisle, Pa.

---

## 30 MILES

*To Good Food Served Better and a Comfortable Nights Rest*

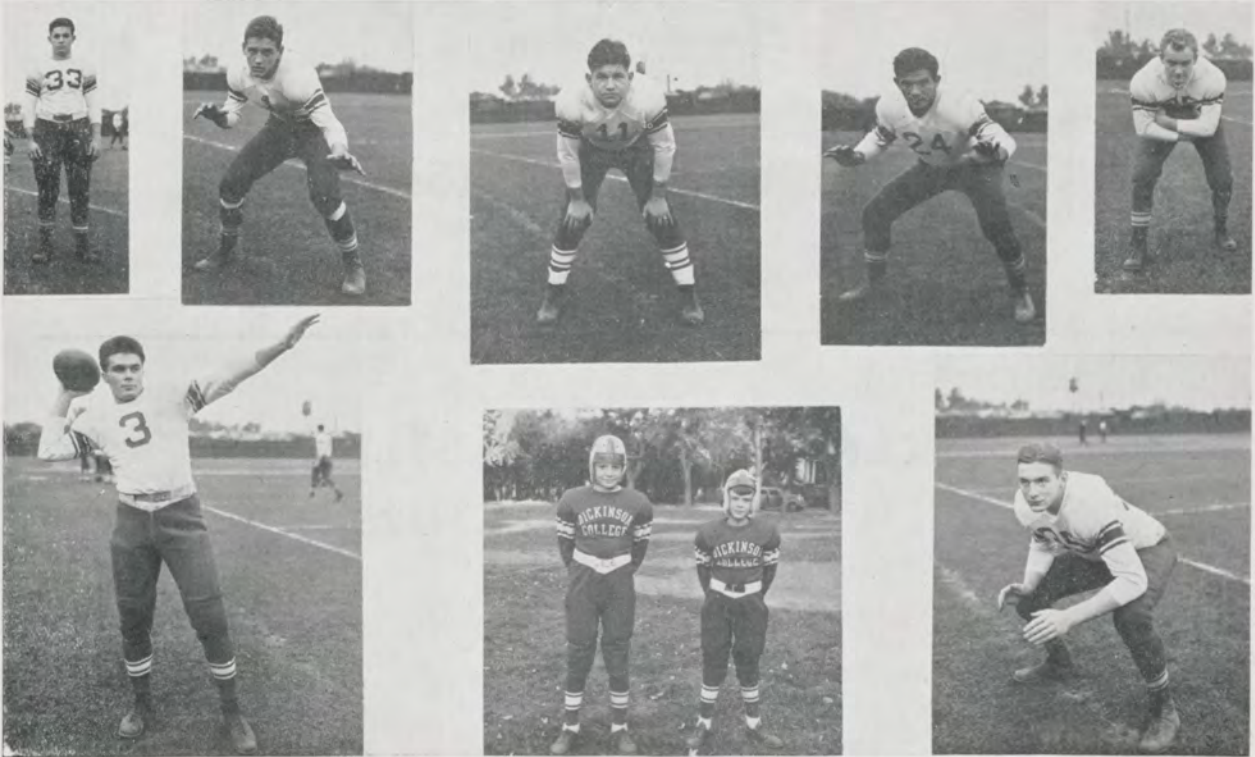
## HOTEL WASHINGTON

Chambersburg, Pa.

FRANK A. VENNER, *Resident Manager*



# DICKINSON



Jim Kinney

Sam Padjen

Herm Asin

Howy Wiley

D-son Mascots

Gil Hertzler

Corny Shenk

Red Bittle

WE RECOMMEND

*The*  
**ARGONNE HOTEL**  
 and  
**GRILL ROOM**

*"Carlisle's Most Popular Hotel"*



B. S. SWARTZ, Prop.

## WILSON'S FLYING SERVICE

*Ships for Charter Trips*

Student Instruction in Late Model Ships

RATES REASONABLE

Phone Mechanicsburg 946 R22

*Field at New Kingston, Pa.*

## ROBERT FREDERICK

PLUMBING *and* HEATING

Petro-Nokol Oil Burners  
 and Stokers

PHONE 90

15 East High Street

Carlisle, Pa.

*Graduate to*

## ATLANTIC WHITE FLASH PLUS

---

### GARLAND and BISTLINE HAULING CONTRACTORS COAL AND COKE

W. Louther Street, Carlisle, Pa.

Day Phone 444W

Night Phone 98R

---

#### *Go Home* BY TELEPHONE

*Voice Visits are as inexpensive  
... as they are delightful*

Reduced rates are in effect every weekday  
from 7 P.M. to 4:30 A.M.,  
and all day Sunday

THE UNITED TELEPHONE COMPANY  
OF PENNSYLVANIA

#### Gorgas Drug Store

*Harrisburg's Center for  
Dickinson Students and Alumni*

16 N. 3rd Street

1306 N. 3rd Street

2 Gorgas Rexall Drug Stores

Harrisburg, Pa.

---

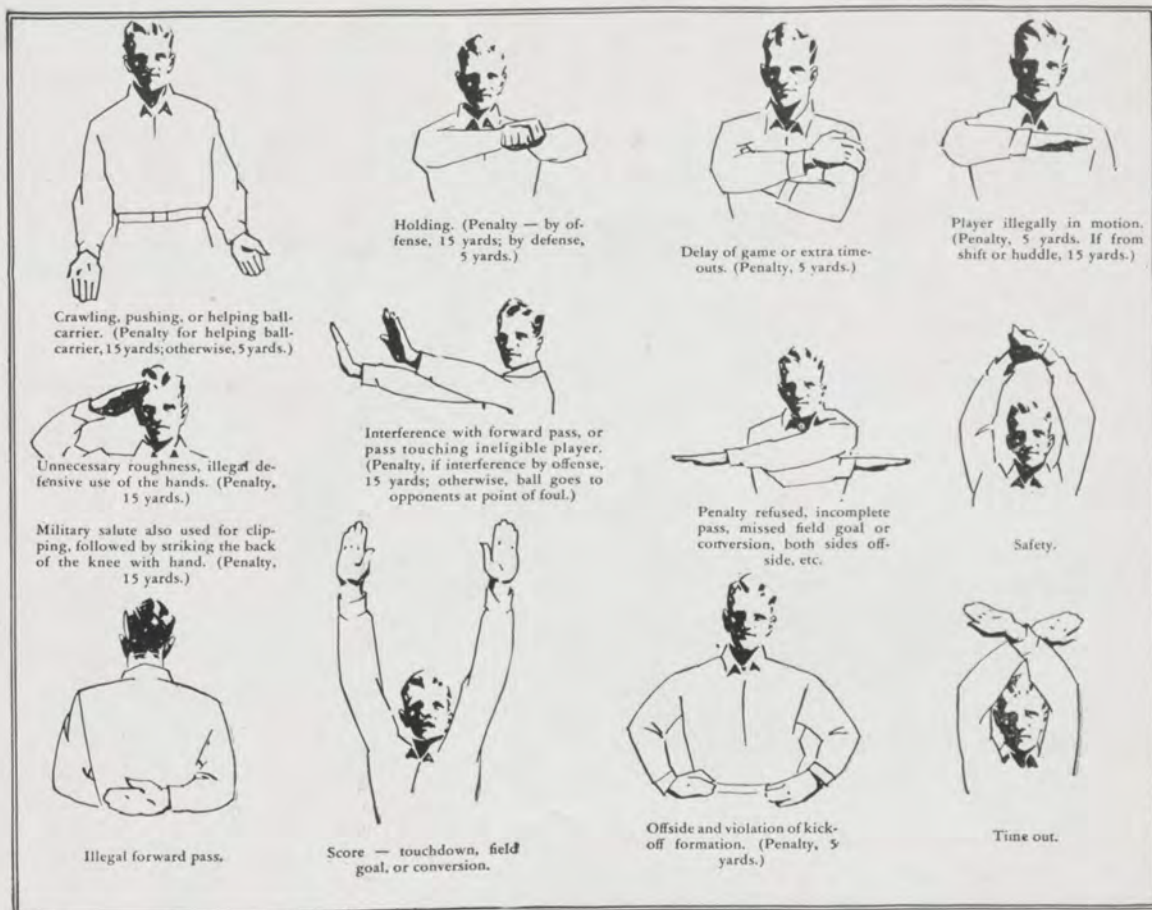
*Visit*

### SEVEN STAR GARAGE

*See*

THE NEW 1937  
BUICKS AND OLDSMOBILES

W. J. FETTER



## Penalties

- |  |  |  |
|--|--|--|
| 1 Holding by defensive side  | 6 Illegal tackling or blocking                                 | 12 Substitute failing to report  |
| 2 Crawling   | 7 Offside  | 13 Backfield in motion   |
| 3 Attempt to draw opponents offside                                    | 8 Encroachments on neutral zone                                | 14 Taking time out more than three times during half   |
| 4 Delaying game  | 9 Feint to snap ball   | 15 Player out of bounds  |
| 5 Taking more than two steps after fair catch                          | 10 Illegal possession  | 16 Running into kicker   |
| <b>LOSS OF FIFTEEN YARDS</b>   |  |  |
| 17 Holding by side in possession of ball                               | 24 Tripping  | 30 Running into opponents illegally  |
| 18 Hurdling  | 25 Leaving field during one-minute intermission                | 31 Individual going on field without permission  |
| 19 Coaching from sidelines   | 26 Unsportsmanlike conduct                                     | 32 More than one attendant going on field  |
| 20 Intentional grounding of forward pass                               | 27 Piling up   | 33 Failure to come to one-second stop in shift play  |
| 21 Interference with fair catch  | 28 Tackling out of bounds                                      | 34 Roughing the kicker   |
| 22 Substitute communicating before first play                          | 29 Rushing, pulling, interlocking, interference, etc.          | 35 Clipping  |
| 23 Throwing fair catcher   | <b>OTHER PENALTIES</b>   |  |
| 36 Illegal return to game: loss of twenty-five yards                   | 38 Foul within one-yard line: half distance to goal line       | 41 Flagrant roughing of kicker: 15 yards and disqualification  |
| 37 Team not ready to play at scheduled time: loss of twenty-five yards | 39 Interference with forward pass by defense: loss of the ball | 42 Any act committed by an outsider but affecting the game: the referee is empowered to impose such penalty as justice may require |
|  | 40 Slugging: half distance to goal and disqualification        |  |

# KRONENBERG'S

*The Name Means Everything To Every Well Dressed Man*

# KRONENBERG'S

*Quality Drugs*

*Good Drinks*

## PHILLIPY'S DRUG STORE

Opposite Post Office

•  
"Whitman and Foss Chocolates"

## SMITH MUSIC HOUSE

*Everything Musical*

ZENITH RADIOS

NORGE PRODUCTS

Victor, Brunswick and Decca Records

•  
Phone 695-J

•  
110 W. High Street

## H. E. BARNHART

THE  
COLLEGE GROCER

POMFRET and WEST STREETS

Call 462 or 485

## CHARLES C. HOFFER

*Meats*

•  
151 SOUTH HANOVER STREET

# CARLISLE BAKING CO.

Bakes Good Bread and Good Cakes

# *Ingersoll* GRID CONTEST

Win a Watch by Guessing Next Week's Scores

HERE ARE  
*Free*  
PRIZES



**FIRST PRIZE**  
LAPEL — looks the "tops" with sport clothes. The new leather case became overnight the latest watch fashion. Leather lapel cord goes through lapel buttonhole for smart safety . . . \$3.95



**SECOND PRIZE**  
AERO — strong and dependable for the rough and tumble of active people. Plain or artistic fancy case. Stainproof chromium back. Fine leather strap or chromium-finished metal link strap . . . \$3.25



**THIRD PRIZE**  
YANKEE — smartly small. Thinnest pocket watch at \$1.50. "Stay put" crystal; chrome finish. Unusual leather lapel cord; modern figured dial. Ingersoll movement, famous for ruggedness.

● An Ingersoll is a prize watch — whether you win it or pay for it. Here's a chance to get one FREE! Guess the total number of points that will be scored by both teams in each of the games listed below, and put your guess in the space designated. Then add up and total all the scores. Sign your name at the bottom and mail your ballot to **INGERSOLL FOOTBALL CONTEST EDITOR**, 318 West 39th Street, New York City. Three prizes will be won by people attending **THIS GAME** today. Prizes will be awarded according to the total scores of all games, not by individual games. Do not skip a game. Ballots must be mailed not later than noon, October 28. *In case of a tie duplicate prizes will be awarded.*

## GUESSING BALLOT

### OCTOBER 31st GAMES

Write Your Total  
Score Guess Here

Boston	vs. Univ. of Miami	_____
St. John's	vs. Delaware	_____
Springfield	vs. Providence	_____
Capital	vs. Heidelberg	_____
Brown	vs. Tufts	_____
P. M. C.	vs. Lebanon Valley	_____
Morris-Harvey	vs. Glenville	_____
Yale	vs. Dartmouth	_____
Vanderbilt	vs. Louisiana	_____
Notre Dame	vs. Ohio State	_____
Penn	vs. Navy	_____
Temple	vs. Holy Cross	_____
Fordham	vs. Pittsburgh	_____
Harvard	vs. Princeton	_____
California	vs. Washington State	_____
Total of Scores		_____

Your Name.....

Street.....

City..... State.....

# DICKINSON



D



D



DUTCH WEIMER

JACK FREDERICK

HAMMY ADAMS

Three Pair of Brothers on the 1936 Dickinson Team - Left to Right

CLARENCE HENDRICKSON - WILLIAM HENDRICKSON - KINZIE WEIMER

DAVE WEIMER - HAROLD BINDER - CARL BINDER

CARL BINDER

HAROLD BINDER

HENDY HENDRICKSON

SWEDE LARSON

GEORGE SHUMAN

RAY SHORE

BOB GRAINGER

SKIPPY OBERDICK

If the People  
of the Thirty-first District  
feel that

# LEON C. PRINCE

has faithfully served them as

## STATE SENATOR

he would thank them to

"Say it with votes"

November 3rd

---

**FIRESTONE**  
**AUTO SUPPLY**  
AND  
**SERVICE STORES**

HANOVER and SOUTH STREETS

Phone 30

•  
*Complete One-Stop Service Station*  
*Sales and Service*

ENJOY EXCELLENT FOOD IN A  
MODERNISTIC ATMOSPHERE

*at the*

### CARLISLE DINER GRILL

10 N. PITT STREET

DINNERS • LUNCHES • SANDWICHES

STEAKS • CHOPS • SEA FOOD

FAMOUS **PIEL'S** BEER

# Luckies - a light smoke

OF RICH, RIPE-BODIED TOBACCO - "IT'S TOASTED"



## YOU...and a LIGHT SMOKE

It is a Lightness in the smoke that makes people choose Luckies. A rich, clean Lightness in the taste. A smooth Lightness of "feel" in the throat. Puff by puff, a delightful sense of ease. From the choosing of the finest center-leaf tobaccos - to the "Toasting" which removes certain harsh irritants naturally present in all tobacco, every careful measure of Lucky Strike's manufacture is designed to please you more... to offer A Light Smoke of rich, ripe-bodied tobacco.



RILEY SMITH

Alabama Quarterback • Member of Grantland Rice's All-America Team for 1935 • Home: Columbus, Miss. The greatest blocking back and signal caller in the South in 1935.