

Dickinson Alumnus

FEBRUARY 1974

**president
announces
retirement**



The
DICKINSON
ALUMNUS

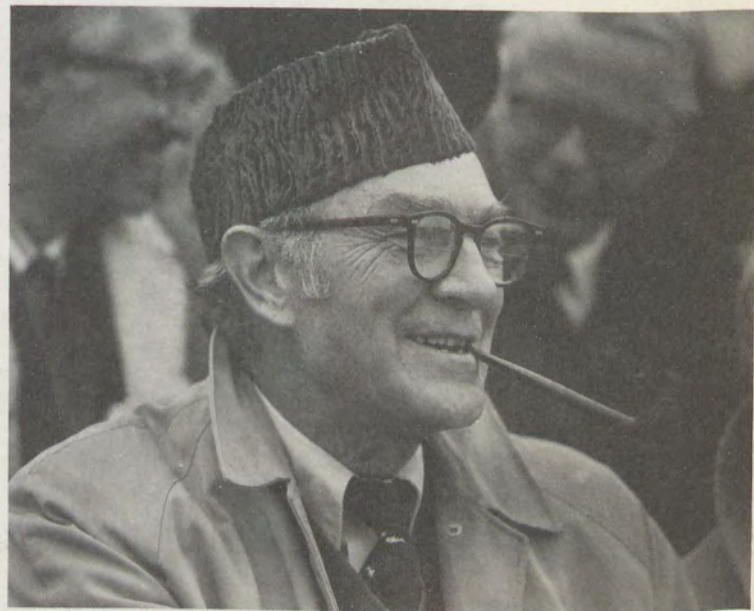


Volume 51 Number 1
February, 1974

IN THIS ISSUE

- 1 President will Retire
- 2 A Gun at our Head
- 5 Two Rights Facing
- 9 The 1973 Dickinson Fund
- 20 In the News
- 22 Statistics
- 23 Personal Mention
- 30 Obituaries

The *Dickinson Alumnus* is published by Dickinson College, Carlisle, Pa. 17013 each August, October, December, February and April. Second Class postage is paid at Carlisle, 17013. George F. Stehley '62, Editor • Richard L. Guerrein '72, Director of Publications • Jeanne L. Hockley, Department Editor • Howard Kolus and Jeffrey Wiles, Staff Writers • Rick Smolan '72 and Chuck Isaacs '73, Staff Photographers.



Dr. Howard L. Rubendall

president announces retirement

dr. Howard L. Rubendall, 24th president of the College, has announced his retirement effective June 30, next year (1975).

"I believe that a man's retirement should be planned for the sake of his body, mind, spirit and family," Dr. Rubendall declared in a letter to Samuel W. Witwer, president of the board of trustees. "There is no indispensable man. I am confident that Dickinson will always find good leadership. For Carol and me the years at Dickinson have been the most fulfilling of our lives."

The President's decision was revealed at the mid-winter board of trustees meeting on January 26.

"It comes to me with regret," Witwer stated. "I had hoped that we might have prevailed upon him to remain longer. Reluctantly we must now respect his judgment to retire a year and a half hence....the feeling of impending loss of Dr. Rubendall's leadership is tempered by the knowledge that the man who has led our College will be leaving Dickinson in a posture of strength and promise not excelled at any time in its long history."

Rubendall, 64, has initiated tremendous physical and academic changes during his 13-year tenure as head of the College. Curriculum innovations stress independent study, research and honors work, interdisciplinary courses and the self-developed major.

Since coming back to his alma mater in 1961 from Massachusetts, where he served as president of the corporation operating the Mount Hermon School for Boys and the Northfield School for Girls (now Northfield Schools), Dr. Rubendall has nurtured the greatest physical expansion of the campus in its history, overseeing the erection of 20 new buildings—library, classrooms, student center and dormitories—valued at over \$16 million. Enrollment has grown from 1,100 to 1,700 and the faculty now numbering 112; has been strengthened via greater opportunity for research, travel and the addition of top new talent.

But the President's proudest accomplishment at the College, is something he likes to refer to as "community," a full partnership of faculty, students and administration in which

all participate in the decision making process. Students sit on all-College committees with vote and attend faculty meetings with privilege of taking the floor.

Upon graduation from Dickinson in 1931, Dr. Rubendall taught at the American University in Cairo, Egypt. In 1934 he entered Union Theological Seminary from which he received a divinity degree; he is an ordained Presbyterian minister. From 1937 to 1941 he was chaplain and head of the department of religion at the Hill School, Pottstown, Pa. and from 1941 to 1944 served as pastor of the First Presbyterian Church, Albany, N.Y.

He is a trustee of Harrisburg Academy and a member of the executive committee of the Foundation for Independent Colleges of Pennsylvania, and a director of Union Theological Seminary.

Shortly after assuming the Dickinson presidency, Dr. Rubendall declared the College's "first order of business...the unhampered pursuit of those studies which nurture the human spirit while they inculcate the values which bring freedom and dignity to the individual. This purpose is not set to counter national trends in education but to help these trends save the nation."

In his letter of resignation, Dr. Rubendall said he was "proud of the record we have made together at Dickinson. We will be tackling some new problems in the next 17 months, and I am sure there will be notable accomplishments."

Trustees have formed a search committee to seek a successor to the retiring President. "We will have an adequate period to search for a successor with the assurance that Dr. Rubendall will continue to exercise vigorous leadership until the new president is elected," Witwer declared.

a gun at our head

John Woltjen likes to talk budgets. He'll sit in his unobtrusively pleasant office speaking of annual giving, plant maintenance, projected expenditures, debt reduction and other assorted concerns facing the College's treasurer—which he is—uncomplainingly, explaining it all to the interested visitor. And somewhere along the way, with just the slightest touch of pride, he's sure to mention that the budget has been in the black since 1971, shortly after his arrival.

At least that's the way it used to be.

"I see the possibility that we might be red at the end of the fiscal year," Woltjen says now, somewhat reluctantly but with the conviction of a man who has made a realistic evaluation of a rapidly changing situation.

"So far we have met all cost increases," he continued. "But we see our flexibility substantially curtailed. We have our fingers very much crossed at this point that something does not come along and hit us between now and June. Food and maintenance costs are continually rising. Food service and plant operations account for over a quarter of our total expenditures. Our options are becoming more limited. We're trying to maintain the College's budgets, but we are in an uncertain situation at this point, leaving us somewhat perplexed as to exactly what additional steps we might be taking right now. We're hesitant to cut this or that service. In the meantime, we're not authorizing any expenditures not already planned in the budget except those absolutely necessary because of inflation."

Woltjen pointed out that the \$8.9 million fiscal 73-74 budget contains a \$61,000 surplus "which is but two-thirds of one per cent of total planned expenditures, not a great leeway."

"One of the real things that may face the College is to determine whether it will be necessary to elimi-

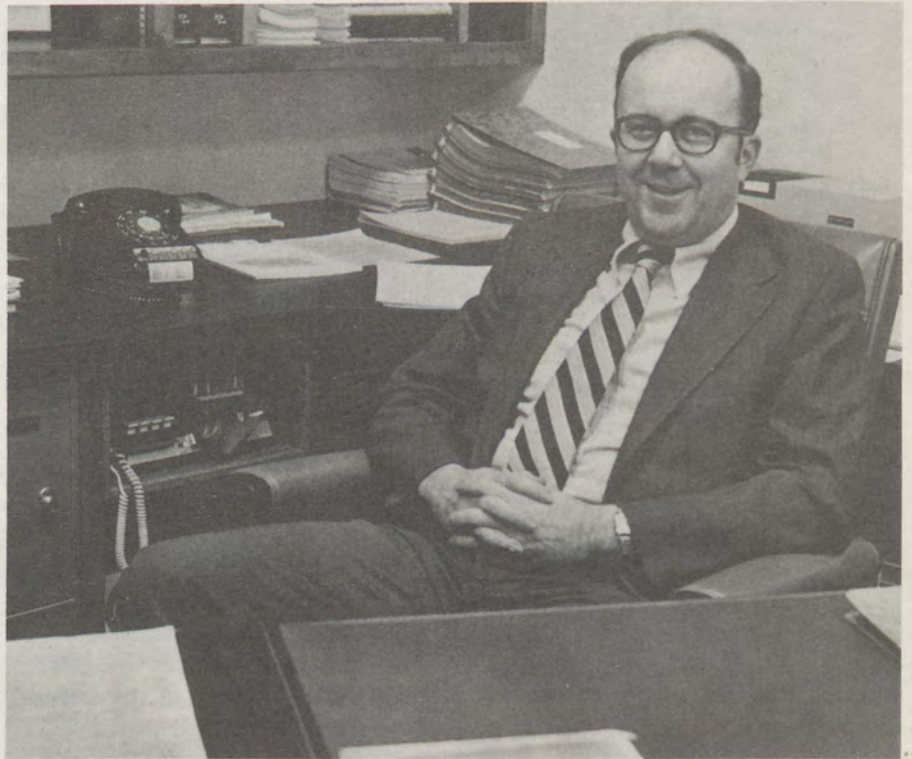
nate certain programs," Woltjen added. "Will we be able to continue the programs and services Dickinson has been providing in recent years?"

The College receives income from three sources: tuition, endowment earnings (endowment now \$13.5 million) and gifts and grants. Woltjen's comments:

Tuition and fees: "A matter that is of very much concern is the total fee structure of the College in that it is high and we must, as much as possible, minimize future increases. Those for fiscal 74-75 will be minimal in comparison with past years. A tuition hike is inevitable next year. There is discussion of this in committee now."

[Since this article was written, the College has announced a \$165 increase in room, board and tuition fees effective with the fall term. Editor]

While room and board charges are equivalent to actual costs, the business



John Woltjen (top) explains that, whenever possible, work is done "in-house." The College operates its own bakery (left) and services its own fleet of autos (above).

manager noted that other educational services, tuition and the like, do not carry their share of the financial burden, bringing in only about 75 per cent of prevalent operating expenditures. Traditionally, plant-fund costs, that is costs of construction and upkeep and provision for depreciation of physical facilities, are not included in charges to students but are covered by capital fund raising campaigns and specifically designated endowment funds.

Gifts and grants: A major effort will be to maximize support from alumni, business and foundations, Woltjen stated, noting that this year's Annual Giving goal is a reflection of current needs, rising 28 per cent above the previous year's achievement. The outlook is rather bleak, however. One example: The New York Times reported recently that corporate philanthropy to higher education last year declined to \$340 million, less than one per cent of pretax earnings of contributing firms. Five years earlier it totaled \$375 million.

"Business is having its own problems," says Woltjen. "It's becoming careful in spending money. Stockholders are not as charitable with the company's earnings as they once were."

Another reflection of the state of education today is indicated by a Carnegie Commission survey which reported public confidence in education down 30 per cent since 1966.

The energy crisis hasn't helped either. All in all, Woltjen estimates collective expenditures necessitated by shortages of all kinds (fuel, paper, etc.) and rising costs for operational needs such as telephone services, will add another \$100,000 in bills this fiscal year alone—money which hadn't been budgeted for these specific purposes.

And then there's debt reduction,

currently at \$1.7 million, down from \$3 million in fiscal 70-71. The College has entered into an agreement with four lending banks calling for no new additions to staff, no new buildings unless funded fully from outside sources, and the use of all unrestricted gifts toward debt reduction with minimum payments of \$200,000 from the operational budget annually through June, 1976. Explicit approval from the lenders must be received for exemptions to these provisions.

Dickinson has found "in-house" operations to be one dollar-stretching device and employs the concept in various areas. It recently installed several heavy-duty washers and now launders its own service personnel uniforms resulting in a \$12,000 savings. Most baked goods served in the dining hall are the product of the College's ovens. "We discovered that if we can perform these services ourselves, rather than have a vendor come in, costs are reduced," said assistant business manager Barry L. Gaal. "But you must make sure you know what you're doing and we've sought out advice from consultants to assure it's done right."

The College also hired its own auto mechanic. Though originally a move of convenience, Woltjen now declares it is also profitable economically. Additionally, a heightened effort to make best use of idle campus facilities during the summers for conferences and meetings is underway. An Office of Summer Conferences was recently established. Other cost-cutting measures currently employed include a study to determine maintenance expenses per square foot of dormitory and other building space.

"We're also endeavoring to measure the effectiveness of our dollars both academically and for physical operations via a comprehensive cost analysis approach to most segments of our

functions, giving us financial data on a very selective basis," Woltjen said. "We know, for example, operating costs per each individual building on our campus."

"Measurements are being developed to determine the values of administrative services and our academic and educationally related programs," he explained. "We will try to determine the unit cost for as many of our programs and services as possible and make whatever decisions are practical. One of the keys to our operations is that controls have been developed insuring that we'll follow the budget plan. The budget process is very meaningful and we have great insistence that it be followed."

Dickinson is currently up-dating its five-year budget projection ranging through 1980, a continuation of advance budget outlooks begun in the early sixties. Budget planning is accomplished by a triumvirate: Woltjen, The Institutional Priorities and Resources Committee and the Board of Trustees Finance Committee. "The IPR Committee is an additional step at Dickinson," Woltjen noted, "one not common at many institutions. It allows input from three important segments of the College—faculty, administration and students."

Woltjen works closely with the IPR subcommittee, whose membership includes three faculty, three administrators and two students (president and treasurer of the Student Senate). Their recommendations are submitted to IPR, which in turn makes recommendations to the Trustees' Finance Committee. Final approval, of course, rests with the Board of Trustees.

"Regardless of what the future holds, we still have to live within our budgetary ability," Woltjen concludes. "With a limited income, there's really no alternative."

two rights facing

A Symposium on the Mideast Situation

by S. Ned Rosenbaum

isaac and Ishmael were half brothers on their father's side. That makes Jews and Arabs "cousins" and gives their wars many characteristics of family feuds.

One of my Israeli friends told me that when his unit entered Hebron in 1967, many soldiers were eager to encounter resistance so that they could avenge the massacres of 1936 and 1948. "But," he said, "they all came out with white flags. What could we do? We're not Nazis." There were no casualties at Hebron that day.

However, the bitterness on both sides persists because, as Chaim Weizmann said, there is right on both sides. The situation is further complicated by Moslem memories of empire - now more than 500 years past - and Jewish nightmares of genocide, ancient and modern. As an Israeli Armored Corps officer put it, "In twenty-five years fighting with the Arabs we have lost fewer people than in two days at Auschwitz." That he should even make this comparison is instructive in itself.

But each armed conflict, when it stops, produces some momentum toward peace. It's a bit like the proverbial hitting yourself on the head with a hammer . . . there may even be some positive correlation between the severity of the war and the subsequent seeking for peace. At least, each "round" that produces no clear victory costs more, and more clearly demonstrates the poverty of war as an instrument of policy. Moreover, it is apparent that neither America nor Russia can afford to let its "side" lose.

On the other hand, it is obvious that Russia is not interested in permanent peace. This being so, little credence can be given to Arab claims on their merits because Syria and Egypt have sold themselves into Russian bondage. (The relationship between America and Israel is not comparable; while Russia prods the Arab states to war, American and American public opinion constrain the Israelis from making a full response.) If, however, the Arab states recognized the desirability of having an independent and respected voice in world affairs, then it would be possible to achieve peace in the Middle East in defiance of Russian aims.

The problems of the area are territorial, political and, above all, human. Though some Jews and some Arabs exhibit tendencies to claim Divine authority for national endeavors, there is no element of religious fratricide in their struggle. There is, in addition, some memory of the reasonably good relations between Moslems and Jews during the period of Islamic empire. If history cannot repeat itself exactly, there is still room to borrow from the past.

Admittedly, this is not much to go on. But what is lacking in hope must be made up for in doggedness. As it says in the Talmud, "It is not up to you to finish the task, but neither are you free to desist from it." □

by Gregory Sahn

The Arabian governments will oppose any nation to get back the lands now held by Israel since 1967. Israel feels she cannot long live in a pre-1967 nation stripped of secure boundaries.

Each side has fought, and will fight, viciously for their beliefs until a solution can be attained, hopefully from the peace conference in Geneva when the governments reconvene at the end of January. Each side fought in the October war with the fervor of the warrior who is convinced that his cause is just. The tension was caused by and is being perpetuated by the Arabs and the Jews in their belief that they are right, what Mr. Kissinger has termed "two rights facing each other." Additionally, the highly emotional issues of to whom Jerusalem belongs - Jordan or Israel - and the fate of the displaced Palestinians are also casual factors which will have to be settled before an honest peace can be attained.

The Oil Embargo

Global consequences of the Arabian oil embargo, particularly on America, assume two opposing classifications: beneficial or baleful, depending on one's perspective. The oil pressure has been beneficial for the world because it, in the long run, perhaps more than any other circumstance, forced to the surface the very real problem of limited oil reserves and the increasing necessity of researching and developing alternate energy sources. It is baleful in the sense that the adjustment from a mass-oil consumption life-style represents both an inconvenience and an additional expense in the short run.

Another consequence of the oil crisis is the further erosion of relations between European countries and the United States. Resisting implicit pressure from the U.S. to support her in the October struggle against the Arabs and Russians, the Europeans remained relatively neutral. It is a generally known fact that what was to be the Year of Europe in 1973, was anything but.

The Campus Response

But bringing the discussion from the macrosphere to the local and more personal level, I would like to suggest some consequences the October conflict has produced in the College community

The most obvious effect of the war - the diminishing supply of oil - caused a revision in the school calendar which lengthened the Christmas break as well as the graduation date. This was designed, like government-initiated actions, to conserve electricity and the supply of oil needed to heat community buildings. College thermostats were lowered to a daytime 68 degrees and one couldn't help noticing the number of students wearing sweaters in the dining hall. In the nature of an energy crisis cafeteria lights, by early December, were only switched on for dinner. One would have to look back to 1970 amid the ecology crisis to find a comparable total student commitment. Bicycles, already vogue by fall, had the added advantage of not requiring liquid energy and more and more students began to cycle to the mall or downtown Carlisle rather than drive.

On campus, as across the nation, the war virtually defused Watergate for the month of October. Academic arguments for the impeachment of Mr. Nixon were subordinated to emotional arguments for aide to Israel. Letters to

the *Dickinsonian* editor were less concerned with the fate of Mr. Nixon than that of Israel. Clippings from various newspapers and magazines, reporting the status of both sides, were posted in the student union under the auspices of the Jewish Hillel organization. It was this organization, comprising about 6% of the student population, that took on the job of informing the campus for the duration of the conflict. Through the use of teletype and the apparent objectively-selected clippings referred to above, the campus was inundated with almost hourly developments of the Middle East war.

This conflict also tested the efficiency of the propaganda war, and while nationwide the victor might be indeterminant, on campus there was really no contest. Members of the Jewish community via Hillel, comprising about 13% of the student body (compared to 3% of the U.S. population) so excellently executed a program of opinion influencing that the impressionable student could not fail to be affected. Through the utilization of pro-Israeli posters, emotionally worded and pinned to the Hillel bulletin board, they produced the desired effect of sympathetic support from the community. For example, picture a young Israeli soldier, serene and fatigued with the caption: At the age of 25 this soldier is already a veteran of two wars; or the photograph of a young girl around the age of 5 or 6 with the caption: This child might not live to celebrate her next birthday. Pure, unpretentious emotionalism. And it stuck, for many students and faculty members were critical of the "war-hungry Arab" striking on Yom Kuppur to regain his pre-1967 lands.

A table was also set up soliciting donations for Israeli relief purposes; Hillel-sponsored dances were initiated and the proceeds sent to Israel.

Perhaps the campus propaganda war was (is) a function of the community-Jewish cohesiveness or the Jewish cohesiveness a function of the propaganda war, but with either relationship, the campus atmosphere at the time, and even today, approximates a Middle East orientation that is Israeli in perspective. With an Arabian-American campus population of about .1% (compared to .5% of the U.S. population) this is understandably so.

The Cost of Crisis

However, U.S. opinion could assume a somewhat inimical response towards the Middle East Arabian if a continued oil embargo threatens our American economy. As a result of rising fuel costs (12.2% for the month of December) and the now comparable expense of alternately producing crude oil from shale, much of the rise in the wholesale price index of 2.2% for December was the result of having to pay more for energy.

The effect of the October war produced similar results for our community. According to business manager John Woltjen, additional costs to the College could be expected to exceed \$100,000 mainly because of higher fuel prices. The steady rise in tuition of approximately \$200 per year since 1971 can be expected to continue and quite possibly increase substantially as the College tries to offset this additional cost.

Literally, the entire world can ill-afford a renewal in the Middle East war - politically, economically or socially. Let us hope and pray that Mr. Nixon, Mr. Breznev, Mrs. Meir and the heads of the Arabian governments, when they assemble again, can begin to resolve a generation of conflict. □

by Esther Ohlbaum

If the 1973 war is not the last Arab-Israeli conflict, the next one is sure to be worse. If Soviet-American-U.S. diplomacy can produce no new possible solutions, the result will again be a cease-fire rather than a peace. In 1967 Egypt learned that Israel should not have the first strike, and in 1973 Israel learned that Egypt should not have the first strike. From now on the finger will always be on the trigger. Maybe both sides will now learn to reconcile themselves to the realities created by a unique set of circumstances and to the realization that the entire course of Arab-Israeli history cannot be turned back.

The fourth Arab-Israeli War was an uneven battle in two respects. In the first place, if Israel had won, the world would have endured; if the Arabs had won the State of Israel would have been erased. Secondly, there was no equivalence in the forces engaged. Sixteen Arab countries expressed their solidarity with Syria and Egypt, and a number of them sent forces to join in the battle. Israeli forces fought on their own.

The Arabs seem to have had four goals in mind in waging the most recent war. They sought to regain lost face as a result of earlier confrontations, they wanted to disprove Israel's supermilitary status, they hoped to regain lost Arab land and they found themselves in a good position to gain economic power by using oil as a political weapon against imperialism and Israel. As a result of the mixing of oil and politics by the Arab nations in their dealings with the West, pressure has begun to be exerted on Israel and more will undoubtedly be forthcoming. Yet it seems clear that if Israel were to comply with all the Arab demands, or even if the State of Israel ceased to exist altogether, the major oil producers would continue

to increase their already exorbitant prices, and they would still not supply more than they think compatible with their best interests.

Existence is Aggression

Every Arab-Israeli war has been haunted by the previous one. Both in 1967 and 1973 the Arabs hoped to recover occupied territory. In 1967 it was the land held by the United Nations Emergency Force on the Egyptian-



S. Ned Rosenbaum is Assistant Professor of Religion and the Coordinator of the College's Judaic Studies Program. Educated at Tulane, the Univer-

sity of Chicago Divinity School, Brandeis University and the Hebrew University in Jerusalem, Professor Rosenbaum lectured for a year at the American College in Jerusalem. He has published several articles concerning the origin and interpretation of Hebrew scripture.



Gregory Sahn is a member of the Class of 1974, born in Lancaster, Pennsylvania. He is an economics major.



Esther Ohlbaum is also a member of the junior class who is majoring in French.

Israeli border in the Sinai region as a result of the war of 1956. The occupied territories behind the 1973 war were the areas Israel took in 1967. Until 1967, "occupied territory" in the Arab view referred to the land which actually composed the State of Israel. Accordingly, the very existence of Israel was regarded by the Arabs as an aggression. After 1967, Arab policy changed the meaning of "occupied territory" to refer to the land won by Israel in 1967, and "aggression" to the way the war came about. With each successive war, the Arabs have sought to turn back the course of Arab-Israeli history. In 1973 they wanted to go back to 1967; in 1967, to 1956; and all the time to 1948, before the State of Israel was born. Although the locus of the "occupied territory" has changed, its political significance and its implication have not.

The term "Israeli aggression" was the battle cry of the 1967 war. This slogan seemed necessary to give the Arabs a sense of outraged innocence and an unrestricted claim on the rest of the world. If the Israelis were guilty of an unprovoked aggression in 1967, who could rightfully deny the Arabs their pleas for justice or even revenge? Those two words "Israeli aggression" contained the Arabs' entire moral and political case against Israel, as if the charge were self-evidently true; and, if true, nothing more needed to be said to condemn Israel before world public opinion. It is the peculiar nature of political myths to arise after a war to cover up the true reasons for defeat. Such is this Arab myth. When an enemy's "aggression" and "first strike" become part of one's own war plan, something strange and ominous has happened to the meaning of these terms. In 1973, when the Israelis were clearly the victims of an Arab first strike, the Arabs and their Soviet backers persisted in a bizarre propaganda campaign against "Israeli aggression."

A Lasting Peace?

The basic Arab strategy that "time works in our favor" (as stated by former President Nasser) has been giving impetus to every successive war. Consequently, the Arab countries want to end as well as to start wars in their own way. The fabrication of myths concerning why they lost—Israel was the "aggressor," the United States intervened in an unfair manner, the Soviet Union did not contribute sufficiently—becomes a national passion.

The Arabs have always been interested in a cease-fire, but not in a definitive peace. A cease-fire implies that a battle has been lost; a peace might imply that a war has been lost. The Arabs say it would be "humiliating" to negotiate with Israel while Arab land is still occupied by the Israeli army. If the Arabs have to be spared all humiliation, it would be necessary to undo the equally disastrous and humiliating war of 1948, as well as the 1967 war. The Arabs consider the very existence of Israel to be their real "humiliation."

The assumption that the Arabs can afford to have a war every few years whereas Israel cannot, or that Israel can only fight a short war while a long one is sure to favor the Arabs, gives the Israelis the moral and psychological advantage of always fighting what may be their last war, while the Arabs need not go to the bitter end because there remains a bigger and better war in the offing. The most serious flaw in the Arab theory is that it inevitably escalates the level of every war. From 1948 to 1973 each Arab-Israeli war has increased in scope and costliness. The idea of time working inevitably and inexorably in favor of the Arab is a formula for the most destructive war yet. □

A REPORT

The 1973 Dickinson Fund

At this time we proudly and gratefully recognize the following individuals and organizations who, through their thoughtful gifts, helped to keep Dickinson strong. Friends like these are important. We salute them.

If you made a gift to the Dickinson Fund between July 1, 1972 and June 30, 1973 you will be listed herein. Century 3 Program contributors and special purpose contributors will be recognized at another time.

The 1974 Dickinson Fund is now under way. To meet our goal our gifts must increase by 28 per cent. This goal can be achieved by increasing the size of your gift and by increasing the numbers of Dickinsonians who will be counted in the 1974 Dickinson Fund. We ask you to consider very carefully and to try very hard to increase your gift. Many of you have already given to the 1974 Fund and we say thank you very much indeed. We look forward to seeing you all in the listings next year. Dickinson is counting on you.

In a long list such as the following, it is almost inevitable that some errors occur. If you find an error, please accept our apologies and please notify us, so that corrective action may be taken.

Bruce Rehr '50
Chairman, 1974 Dickinson Fund

Note: GMF = Gilbert Malcolm Fellows (\$100-499); BRA - Benjamin Rush Associates (\$500-999); JDS = John Dickinson Society (\$1,000 and over).

ALUMNI SUPPORT

HONORARY

Lee H. Bristol, Jr., *GMF*
Stephen A. Freeman
Charles Leslie Glenn
Francis H. Horn
Wilbour Eddy Saunders
Leslie R. Severinghaus, *GMF*

1903

In Memory of Elmer T. Grove
J. Roy Strock

1906

Helen Smith Harris
Harry H. Nuttle*
Delora Armstrong Pitman

1907

George M. Briner
Russell T. Davies
Edwin L. Haines
George W. Peffer
Grace Hertzler Towers, *GMF*

1908

Lillian O. Brown, *GMF*
S. Carroll Coale
Lida M. Ebbert
Laura Harris Ellis
Maurice E. Heck
Abram M. Hess

1909

Austin A. Banks
Lillie Reese Smith

1910

Blanche L. Dum
Walter V. Edwards
A. Grace Filler
Lydia M. Gooding, *GMF*
Charles H. Kelbaugh
W. Earl Ledden
Henry Logan, *JDS*
Charles H. Rawlins, Jr.
Jeanette Stevens
Charles Tanger, *GMF*
Mary Robley Vanneman
Joseph S. Vanneman

1911

Rankin S. Caldwell
Clara Bell Smith Dodd
Charles F. Kramer, Jr.
Grace Strock Robbins
Beula O'Hara Van Blarcom

1912

John H. Hemphill
Robert E. Miller
John E. Myers, *GMF*
Helen Carruthers Poteat
Mary E. Roberts
William M. Smith
Glenn E. Todd*, *BRA*
Bessie Kelley Van Auken, *GMF*

1913

Aubrey B. Goudie
John C. Groome
Martha L. Johnson, *GMF*
Julia Delavan Laise, *GMF*
Elda Park McKeown
Hyman Rockmaker

1914

Lester W. Auman
Mary Thompson Bishop
Mabel Krall Burkholder, *JDS*
Donald W. Carruthers, Sr.
Charles C. Cole
Thomas H. Ford, *GMF*
E. Harold Frantz, *JDS*
E. Lamont Geissinger
Cora L. Handwork
J. Roy Jackson
Frank Y. Jaggors
Fred L. Mohler
J. Warren Tilton
Charles E. Wagner
Maude E. Wilson, *GMF*

1915

Margaret Bream Baxter
Olga Meloy Carter
William W. Edell
G. Winifred Evans
Foster H. Fansen
Hyman Goldstein, *GMF*
Roberta Reiff Gracey
Lester S. Hecht
Katherine M. Hodgson
Margaret Day Jones
Paul F. Laubenstein
John V. McIntire
Ina Mitchell Medde
J. Luther Neff
Irene C. Ritchey
Jesse O. Small
Roger K. Todd
Howard B. Warren
G. Floyd Zimmermann, *GMF*

1916

Amelia Wiener Blumenfeld
Joseph S. Davis
Robert L. Ganoe
Paul W. Heck
Thomas R. Jeffery
Reynolds C. Massey
A. Norman Neady, *GMF*
J. Frank Puderbaugh, *GMF*
Herbert S. Reisler
E. Pierce Shope
Clark L. Van Auken
Anna Shuey Whiting

1917

Fred P. Corson
Michael F. Davis
William M. Dougherty
Mervin G. Eppley
Max Hartzell
Florence Baker Hutchison
Margaret McMillan Keith, *GMF*
Nora M. Mohler, *GMF*
Miriam Evans Morgan
Robert L. Myers, Jr., *GMF*
Milton R. Priddis
C. L. Shollenberger, Jr.
John M. Stevens
Albert Strite, *GMF*
Gather P. Warfield, *GMF*
E. David Weinberg, *GMF*
Robert E. Woodward

1918

Frank R. Adams
Mary May Bixler
Harold H. Bixler
Howard R. Breisch
M. Mabel Clark
Mervin G. Coyle, *GMF*
Mildred Price Ford, *GMF*
Mary E. Glenwright
Lillian M. Kell
George C. Kerr
Elva R. Lippi, *GMF*
James H. McNeal
Nell H. Marvil
John M. Pearson
Harper A. Price
Jesse W. Probst, *GMF*
Herbert K. Robinson, *GMF*
In Memory of Reuben C. Saul
Constance Springer Trees
S. R. Willits
Iva Fisher Yoos

*Deceased

1919

Fleda Laird Adams
Edna Eppley Bagenstose
David M. Balentine
Cornelius V. Bubb
L. Esther Cauffman
Ruth Kruger George, *BRA*
M. Caroline Hatton Clark, *BRA*
Charles E. Davis
Elizabeth Schellinger Douglass
Isabel K. Endslo
In Memory of Sylvester Evans
Thomas F. Fagan
John W. Garrett
Margaret Spotts Hall
Benjamin F. Haws
Elma M. Houseman, *GMF*
Lester F. Johnson
Catherine E. Lobach, *GMF*
William E. Matthews, Jr.
Robert E. Minnich, *GMF*
Ruth Collins Siner
Ethel Ginter Skillen
Mariette Holton Stitzel
Emma H. Swain
Fayette N. Talley
Edward B. Tustin
Ross Wilhide
C. R. Willis
Ada Bacon Wilson
Helen L. Witmer

1920

Sadie Mindlin Aron
Herbert P. Beam
Alma Long Bittner
George H. Burke
Ray H. Crist
Howard S. Fitzgerald
Howard S. Fox
Jean Chalfant Gwynne
Edna Moyer Hand
Harry S. Henck, *GMF*
Alexander M. W. Hursh
William S. Kehl
Edna Morgan Kessler
Hazel M. Lansberry
Mary Bagenstose Mead
Edgar R. Miller
Ralph L. Minker
Martha M. Morrette
Mildred Conklin Page
Marian Logan Priddis
C. Arthur Robinson
Helen Nixon Sanderson
Elwood W. Stitzel, *GMF*
Edna Brumbaugh Williams
Mildred Weir Woodward
Ralph L. Young

1921

Harrington J. Barrus
Alice Schwab Bryant
Evelyn Carr Chapin
John G. Cornwell
Stanley B. Crosland
Herbert L. Davis
Nora Lippi Davis
George Doehne, III
Mildred Harvey Foster
Franklin A. Gray
Horace B. Hand
Margaret Wingard Hocker
Anna Oakes Hoffman
William H. Holloway, *GMF*
C. Wendell Holmes, *GMF*
S. Kathleen LeFevre Horner
Ruth Fasick Huller
Sarah McCrea Jones, *BRA*
John A. Kinneman
Homer L. Kreider
Edward G. Latch
Walter C. Lippert
Trago W. Lloyd
Mildred Masonheimer Long, *GMF*
Harvey M. Miller, *GMF*
Martha Webster Moore
John F. Morgenthaler*
Mary Phillips Norman
Mary Wilson Raub
Edwin B. Rentschler
In Memory of Calvin B. Rentschler
Ethel Riker Rickenbacher
Reba Beam Robinson
Louise Finch Sayes

Harry W. Seabold
Wilda S. Shope
J. Paul Slaybaugh
Malcolm M. Steck
McKinley H. Stevens
Goodell W. Stroup
Mildred Jane Starnier Taylor, *GMF*
Charles H. Thomas, *GMF*
D. Wilson Thompson
Anthony F. Vitoritto, *GMF*
Paul Walker
Albert L. Wentworth
William M. Young, *GMF*

1922

Katharine Patterson Beam
Gladys Guyer Berkheimer
Agnes Albright Brown
Ruth E. Brumbaugh
Beulah M. Fair
Mildred Burkholder Hamsher
Ruth Dotter Heilbron, *GMF*
Cyril J. Hoover
Ruth Herb Kehoe
Harry D. Kruse
Winfield H. Loban
Harold S. Merwin
Ralph R. Miller
Niles M. Poff
Frances Iley Poff
John B. Peters, *JDS*
Elizabeth Bratton Reynolds
Helen Scott Rupp, *GMF*
F. Clark Skelly
Myra Shearer Smith
Harry L. Stearns
James C. Steen, Sr.
James F. Tustin, *GMF*
Harry N. Waldman
C. Elizabeth Watts
Helen M. Wehrle

1923

J. Edward Bacon
Albert L. Baner, *GMF*
Mary Peterman Bare, *GMF*
James E. Brackbill, *GMF*
Howard J. Carter
Elizabeth M. DeMaris
Margaret Eslinger, *GMF*
Mary E. Frankenberry
Charles S. Fry
Dorothy Line Garrett, *GMF*
Donald H. Goodyear
Rodger W. Hawn
Leighton J. Heller
Webster C. Herzog
Florence M. A. Hilbish
Edith G. Hoover
S. Elizabeth Jones
Harold W. Keller
Alta M. Kimmel, *BRA*
Eleanor Epright Kishbaugh
Esther Leeds, *GMF*
Ruth Booty Lins
Janet E. Loy, *GMF*
Elizabeth Bucke Miller, *GMF*
Regis T. Mutzabaugh, *GMF*
Charles I. Richard
E. Cranston Riggan
Guy F. Rolland, *GMF*
Charles L. Ryder
Harold K. Scheirer
W. C. Schultz, Jr., *BRA*
Oella Liggett Scott
Lillian Mindlin Semel, *GMF*
Helen E. Shaub
Charles A. Smith, *GMF*
Mary Line Todd, *GMF**
Guy E. Waltman, *GMF*
Gertrude Probert Walton
Evelyn Wardle, *GMF*
Mary Garland Wark
Esther E. Weakley, *GMF*
Anna Hoke Willis

1924

Mary Potter Anderson
Alva Stegmeir Baker
J. S. Bender
Lulu Tobias Boag
Charles W. Burn
Pauline Buck Corkran

*Deceased

Robert E. Faddis
Gladys Cooper Fenimore
M. Elizabeth Filler, *GMF*
Anna F. Geyer
Thelma E. Greene, *GMF*
Henrietta Bardo Guffick
Evelyn Nailor Hamilton
Elizabeth Crawford Hench
William H. Houseman
Hugh K. Johnston
Jeraldine Houston Jones
Marion C. Keen
Janet A. Kelley
Sidney D. Kline, *JDS*
Zada Branstetter Knickerbocker,
GMF
Charles Kutner
Esther Riegel Long
Isadore B. Lyon
Charles J. Markle
Ruth Jones Minker
Rose Buckson Moore
Helen Notestine Moser
Ruth Bortz Raiford
Ruth W. Read
Floyd Rinker, *GMF*
W. M. Harry Rochow
Marian Kresge Ross
Margaret Paul Sawyer, *GMF*
Mary Chambers Sharp
L. Viola Witmer Shettel
Paul J. Smith
Naomi Michael Snoke
Helen Wilson Spatz
E. Laurence Springer
Harold L. Stewart
Elizabeth Morgan Stone
Leona D. Switzer
Jane Hagerty Thorn
Frances Smith Vuilleumier, *GMF*
Esther Givler Waters
R. Virginia Watts
Charles T. Wilson

1925

Mary E. Baum
Anne Bennett Bennethum
Thomas B. Bordner
Erma Porteus Brock
Mary Thomas Brougher
M. Katherine Smith Carpenter
G. Custer Crowell
W. Lynn Crowding
George M. Davey
William R. Guffick
John F. Hagen
Thelma Nicky Hall
Mary Knupp Hartman
Gladys B. Heim
Melvin W. Hendren
A. Witt Hutchison
Michael Kivko, *GMF*
Eleanor B. Klemm
Herbert F. Laise
Norman W. Lyon
W. D. McCahan
Joseph A. Nacrelli
Horace N. Olewiler
C. Norris Rabold, *GMF*
John W. Roddie
Paul M. Schuhart
J. Mahlon Selby
R. Mae Mountz Shultz
Herbert A. Solenberger, *GMF*
Florence C. Speck, *GMF*
Carola Learned Stuckenrath
Norman R. Wagner
Clyde E. Williamson

1926

George H. Armacost
Helen Appleby Arnold
Dorothy Willits Balch
Mary Leinbach Baldwin
Nevin L. Bitner, *GMF*
Mary Caldwell Bridenbaugh
Walter H. Canon
Clyde E. Carpenter
Louis Cohen
Clarence A. Cover
Marian S. Davidson
Ralph O. Evans
Alvin A. Fry
Helen Douglass Gallagher, *GMF*
George A. Groff
Janet Harman Hartzell

Robert D. Hoffsommer
Charles P. Hoy
Myrtle R. Keeny
Florence H. Long
John W. McKelvey
Georgia Krall McMullen
Samuel J. Maconaghy
Elizabeth Madore
John P. Milligan
Maurice Montgomery
Ruth Taylor Myers
Evelyn L. Naylor
Mary Read Oerther
Mary Koller Peters
Ruth Teitrick Rajchman
J. Milton Rogers
Anna Hoyer Rupp
Flora W. Smiley
Roger H. Steck
Margaret S. Steele
Margaret Gress Tatnall
Isabel Ward Warren
Emma Brenneman Weaver, *GMF*
Harry Winfield
Robert E. Woodside
Irva R. Zimmerman

1927

Rolland L. Adams, *JDS*
Helen Bowser Biscoe, *GMF*
Willard E. Bittle
W. Edward Black
John S. Bowman
Mary A. Brightbill
Kathryn Coulter Brougher
Reba Scott Burrows, *GMF*
Elizabeth Wetzel Cover
Velva Diven Daihl
Alfred C. Fray
Thomas R. Gallagher, *GMF*
Nora Shenk Harman
V. Rae Heim
Edgar A. Henry
Isabelle R. Hoover
Charles F. Irwin, Jr.
Margaret Armstrong Kirkpatrick,
GMF
Gertrude E. Klemm
Leona Barkalow Kline, *BRA*
G. Harold Keatley, *GMF*
Harry M. Leonard
Martin F. Miller
Henry W. Moyer, *GMF*
In Memory of J. Frederic Moore
Ruth Ely Nicholson
Kenneth R. Perinchief
Burton L. Pinkerton
Jeanne Morris Portmann
Louise Patterson Rowland
Fred J. Schmidt
Ruth Evans Sebastian
William M. Sheaffer
Walter P. Shuman, *GMF*
Lois Horn Silver
Alvah C. Small, *GMF*
George E. Steigerwald
Catherine Ober Stephens
Harold B. Stuart
Anne Coover Thompson
Frances L. Willoughby, *GMF*

1928

Victor F. Baiz, *GMF*
Raymond M. Bell
Pamela McWilliams Berglund, *GMF*
Dorothy Ritter Bowman
Bernard E. Burr, *GMF*
Dorothy E. Chamberlain
Christopher T. Crook
Marguerite Evans Crook
John A. Dempwolf, *JDS*
W. Arthur Faus
Earl A. Forsythe
Theodore C. Frederick
Carl W. Geiger, *GMF*
Mary P. Goodyear, *GMF*
Thomas C. Graham
Joseph E. Green, II, *GMF*
Victor B. Hann
Dorothy E. Harpster, *GMF*
Albert E. Hartman
Rowland M. Hill
W. Reese Hitchens, *GMF*
Mildred E. Hull
Richard H. Jones
Henry G. Kiessel
Ralph S. Krouse

Mildred F. Laird
Elizabeth Rogers Littman
Louise A. Loper
Raymond A. Lumley, *GMF*
Donald J. McIntyre
Helen Hackman Martin
F. Douglas Milbury
David R. Morgan
William T. Myers
Helen McDonnell Neel
Benjamin O. Nelson
Paul D. Olejar, *GMF*
Jessie E. Poticher
Margaret Slaughter Reese, *GMF*
Lillie Rhoads Rimby
Minerva Bernhardt Rude
Martha Green Sanford, *GMF*
Janet Forcey Schwartz, *GMF*
John T. Shuman
Walter Sidoriak, *GMF*
Elizabeth Cloud Silver
Howard G. Stutzman, *GMF*
Fred E. Sweely
J. Elwood Taylor
Charles F. Wahl
Howard M. Wert
Fairlee Habbart Woodside, *GMF*
Clare Yoder
Richard V. Zug, *GMF*

1929

Violet Williams Alexander
Nathan Asbell
Aubrey H. Baldwin, III
Lydia B. Betts
Donald K. Bonney, *GMF*
Hester Cunningham Boss
Lee M. Bowes, *GMF*
C. Richard Brandt, *GMF*
Blaine E. Capehart
C. Perry Cleaver
In Memory of Mary Finley Conrad
Elizabeth McCoy Cryer
Edith Fagan Davies
Mary Everett Dolbear
Paul A. Friedrich
Reyburn L. Fritz
Elmer O. Goodwin
Velma Roth Gordon
William G. Green
Margaret Craver Grimm
Vernard F. Group
Charles F. Hoban, Jr.
Oliver A. James
Edwin G. Kephart
Janet Smith Kingsley
Bernice Barkalow Kirk
Harold C. Koch
David S. Kohn
Lawrence L. Moore
Paul R. Moyer
Paul B. Myers
Rosana Eckman Rasmussen
James M. Read
Martha Meese Reichard
Richard H. Rouse
Jesse B. Rubright
Harry C. Shriver
Howard S. Spering, *GMF*
Sara Lehr Stegmeier
Frances Yingt Stringer
In Memory of James A. Strite
Warren L. Templin
Marie Ammon Timmins
Harriet Salter Treon
Horace W. Vought
W. Donald Whetsel
R. Wallace White
Helen Laird Winkler
Francis J. Yetter
David M. Zall

1930

Kathryn L. Ammon
George W. Atkins
Virginia Blinn Baiz
Jennings B. Beam
Frances Comly Bear
William S. Bender
J. Fred Berger, *GMF*
Harold G. Bigley
C. Lincoln Brown
Elizabeth Barger Brown
Alexander R. Burkot
John G. Cipko
Lenore A. Cisney

Winifred Smith Drawbaugh
Tobias H. Dunkelberger
James M. Etchison
James S. Feight
William F. Graden, *GMF*
Alice E. Hackman
Royce V. Haines
Catherine Porter Hallock
Walter D. Heckman
Evelyn Kinter Herritt
Edward Hoberman
Raymond N. Hoffman
Margaret N. Horner
Katharine Morris Hoy
William L. Johns
Alfred O. Keedy, Jr.
Rowland H. Kimberlin
Harold A. Kline, *GMF*
M. Frances Robinson Klinger
Robert E. Knupp
Edgar J. Kohnstamm, *GMF*
Florence Shaw Kraeuter
Edward S. Kronenberg, Jr.
Grace Hoffman Kuntz
Ray H. Lyon
D. J. McHenry, *GMF*
Virginia Bentley MacPherson
Christine Weyell Mickey
William R. Mickey
Miriam Horst Middleton
Samuel H. Myers
Ervin E. Natschke
James K. Nevlng
James E. Nolen
Lee A. Pritchard
Elizabeth Eckard Robichaud
Lewis H. Rohrbaugh
C. Wesley Ruffell
Gilbert F. Schappert
William C. Schultz, Jr., *GMF*
Arlene Reed Schwartz
Maurice E. Shaffer, *BRA*
Ralph A. Sheetz
C. Melvin Shields
Elsie Ferriss Shuman
Elinor Green Spencer
Mary Roorbach Starr
Russell S. Stine, *GMF*
Elizabeth E. Tipton
Bessie Baker Whitman
Willis W. Willard, Jr.
Samuel W. Witwer, *JDS*

1931

George W. Adams
Frank W. Ake
John C. Arndt, III, *GMF*
Harry K. Aurandt
Florence Rieffel Bahr
Alfred R. Bax
S. Catherine Bell
Llewellyn R. Bingaman, *GMF*
Evelyn Mountz Bonney
Sherwood M. Bonney, *JDS*
Evelyn Groves Boohar
Kenneth R. Boohar
Eleanor Lehman Bowman
Matthew H. Bradway
Dorothy A. Bryan
Joseph F. Bukowski
Flora Lynch Burns
Richard A. Cartmell
J. Leverage Casner
Rachel McKelvey Cleaves
Robert L. D. Davidson, *GMF*
M. Jane Dando Davis
Harry F. Davis, *GMF*
Thomas D. Davis
Robert E. Dawson
Wilton J. Dubrick
Frank M. Durkee
George B. Elliott
Mark M. Evans
Milton Flower
Alice M. Folsom
Clarke M. Forcey, *GMF*
Lewis F. Gayner, *GMF*
Sara Lukens Gayner, *GMF*
Edward O. Glaspey
Robert G. Greenawalt, *GMF*
Raymond W. Hallman
Vera Morris Hallman
Alfred Z. Hartman
Charles V. Hedges
Donald S. Himes
John M. Hoerner, *JDS*
Henry S. Hutton

William S. Jenkins, *JDS*
Laura Crull Johnson
J. Boyd Landis
Janet Rogers Landis
Gladys B. LeFevre, *GMF*
Herman L. Levin, *GMF*
William I. Lockwood
John T. Logan
August L. Lorey
Mary L. Loy
George R. McCahan, *GMF*
Sarah F. McDonald
Nancy Horner Machtley
Marjorie Ekholm Merrick
Allen F. Morton
Charles M. Moyer
Stanley G. Nailor
Amelia LeFevre Nichols
Frances Keefer Nicodemus
Adelaide Markley Rishel
Howard L. Rubendall, *GMF*
Robert O. Rupp, *GMF*
Marion Baker Snyder
Beatrice Loper Stackhouse
Henry B. Suter
Roy D. Tolliver
Sidney Ullman
Richard H. Wagner, *GMF*
Raymond G. Walker
Melvin L. Whitmire
Sara Whitcomb Wightman
Agnes Esbenschade Willard
Prudence Shultzabarger Wolfe
Charles K. Wolpert
Elinor Dilworth Zeiter

1932

Lowell M. Atkinson
Grant W. Bamberger, *GMF*
George P. Bear
Matilda Nogi Booth
Priscilla Charles Bradley
Raymond B. Counsellor
Mary Oswald Cox
Ruth Grathwohl Coyle
Arthur R. Day, Jr.
John B. Farr, *GMF*
Marion Darragh Faucett, *GMF*
M. George Feingold
Albert W. Freeman, *BRA*
John A. Hartman, *GMF*
Herbert A. Heerwagen
W. Gordon Hesel
George Hires, III
E. Dallas Hitchens, *GMF*
Davis R. Hobbs
David S. Holbrook, *BRA*
William E. Holley
Albert Houck
Seymour Hurwitz
Helmuth W. Joel
Edward E. Johnson
Abram G. Kurtz
Harvey D. Kutz
Annabel Rice Lower
John R. Maddox
George E. Mark, *GMF*
George M. Markley, *GMF*
Frank S. Moser
Ida Hurwitz Mossovitz
Charles E. Myers, *GMF*
Joseph J. Myers
R. Donald Ness, *GMF*
Fayne L. Newlin
J. Wesley Oler
Meyer P. Potamkin, *GMF*
Mary Chronister Rhein
Edward K. Rishel
William W. Shaw
George M. Sleichter
Boyd L. Spahr, Jr., *JDS*
Frederick R. Stegmeier
J. William Stuart, *JDS*
Helen Stover Stuart, *GMF*
Esther Chambers Teller
Stephen A. Teller
Frank J. Valentine
Robert A. Waidner, *JDS*
Mary Grove Wenzel, *GMF*
Richard H. Zeigler

1933

Gerturde Barnhart Anderson
William P. Billow, *GMF*
Edward J. Bonin, *GMF*
Florence Miller Bricker, *GMF*

Thomas L. Brooks
Henry M. Buckingham
Lillian Baker Carlisle
Fred E. Crosley, Sr.
John F. Crow
John B. Daugherty, *GMF*
John M. Davidson, *GMF*
David E. Detweiler
Benjamin R. Epstein, *GMF*
Frances Yard Fox, *GMF*
Francis J. Geiger
Elizabeth Basset Geyer, *GMF*
Mary L. Heckman
Cyril F. Hetsko, *GMF*
Mary Bate Holland
Doris Brandt Houck
Mary L. Hoy
Jesse J. Hymes, *JDS*
Robert W. Ingraham, *GMF*
Emma Shawfield Jacobs
E. Huber Jessop
Dorothy Carl Kennedy
James Knight
Roy R. Kuebler, Jr.
Joseph F. Lipinski
Joseph R. Maguire
Clarence E. Miller
Richard A. Montgomery
M. Helen Dickey Morris, *GMF*
Marie Moore Myers, *GMF*
S. Coover Nailor
Frederic W. Ness
Ida Gillis Palmer
Robert E. Porteous
A. James Reeves, *GMF*
Thomas F. Reilly, *GMF*
Lucretia Heisey Shroat
Leon R. Sloan, Jr.
John S. Snyder, *JDS*
William A. Snyder
Christian C. F. Spahr, *GMF*
Peter J. Tashnovian
Robert G. Taylor
Craig R. Thompson
Milton Unger
Hugo Vivadelli
Emma Fry Weimer
DeHaven C. Woodcock
J. Donald Woodruff
Gertrude A. Yeager
William D. Yount
Gerald L. Zarfoss, *GMF*
Mildred Smith Zeigler
Thomas V. Zug, *GMF*

1934

Edgar N. Beers
John W. Bieri, *GMF*
Robert L. Bloom
Ann Morris Blumenthal
Hazelle Allen Brooks
W. Howard Brown
W. Wallace Brown
R. Bennett Cunningham
Lester T. Etter
Philip D. Fagans, Jr.
Geneva Jumper Finkey
Nelson H. Frank
Albert C. Franks
Thomas J. Fritchey
Bertha Lynch Gladeck
F. C. Gladeck, Jr.
Harris R. Green, Jr., *GMF*
Albert H. Greene, *GMF*
S. Elizabeth Hess
Elinor Betts Hirzel
Abraham Hurwitz, *GMF*
Harry E. Hinebaugh, *GMF*
Priscilla McConnell Hinebaugh
Lloyd W. Hughes, *GMF*
Benjamin D. James
Harry J. Kane
Thomas F. Lazarus
Thomas S. Lehman, *GMF*
Katherine Loder
Ruth Royer McKean
Paul A. Mangan
Francis R. Manlove, *JDS*
John C. Nebo
Margaret Davis O'Keefe
G. Wesley Pedlow, Jr., *JDS*
Herman W. Rannels
Barbara Rynk Reynolds
Sarah L. Rowe
Frieda Brown Shortlidge
Herschel E. Shortlidge, *GMF*

Richard L. Shroat
Dale F. Shughart
Spencer B. Smith
Wilhelmina LaBar Smith
Harvey M. Stuart
Emma Wentzel Toth
Duane M. VanWegen
Christina Meredith Vestling
Frank H. Wagner, Jr.
Luther M. Whitcomb, *GMF*
David A. Wilson, Jr.
R. F. Lee Wolf
Harry C. Zug, *JDS*

1935

Sidney W. Bookbinder, *GMF*
M. Elaine Stradling Chamberlain
William C. Clarke, Jr., *GMF*
Mary A. Duncan
Dorothy L. Edwards, *GMF*
Edward C. First, Jr., *GMF*
Lockwood W. Fogg, Jr.
Willard K. Fohl, *GMF*
Norman T. Gates
Anthony J. Gianforti
Charles F. Greevy
Robert B. Haigh, *GMF*
George V. Hudimatch
J. Banks Hudson, Jr.
Helen Singer Idle
Alberta Schmidt Leech
James K. Leech
Luther J. Linn
Wayland A. Lucas, *GMF*
Lois Eddy McDonnell, *GMF*
John A. McElroy
Kathleen Rickenbaugh MacCampbell
R. Gilbert Mannino
Helen Jackson Martin
Harold M. Missal
Andrew J. Oyler
William H. Quay, *GMF*
William B. Rosenberg, *GMF*
Virginia Fickes Rowe
George H. Sacks
Delbert B. Slivinske
Margaret Martin Sloane
Albert E. Smigel
John J. Snyder, *GMF*
Ruth Shawfield Spangler, *BRA*
R. Edward Steele, *JDS*
William S. Thomas, *GMF*
Frederick W. Turner
G. Bruce Wagner
Robert D. Wayne, *GMF*
E. Leora Williams

1936

Frederick C. Benfield
Leonard R. Blumberg
D. Owen Brubaker
Isabel Byers Binder
Virginia Clark Chilton
John W. Clark, *GMF*
Elizabeth Goodyear Clarke
Daniel K. Davis
Philip F. Detweiler
William H. Dodd
Elizabeth Wittfoot Donaldson
O. Herman Dreskin
William H. Eastman, *GMF*
H. Lynn Edwards
Elizabeth Stuart Einstein
M. Elizabeth Ralston Eldredge, *GMF*
Rowland B. Engle
William D. Gordon, *GMF*
Helen Carl Graham
Barbara Harris Grogan
William E. Kerstetter
Paul V. Kiehl
William Kurtzthalz, *GMF*
Charlotte Chadwick Litchauer
George J. McClain
Sherwin T. McDowell
Frank A. Mader, *GMF*
Naomi Gibson Miller
John W. Mole
Josephine Williams Naylor
John A. Novack
Margaret Jackson Pendleton, *GMF*
Lloyd S. Persun, *GMF*
Edward C. Raffensperger, *GMF*
Marion McKinney Ransom
Dorothy V. Reeve
Renee Reinert Shannon
Peter Sivess, *GMF*
Evelyn Gutshall Snyder, *GMF*

Mary Boswell Snyder
John F. Spahr
Kenneth C. Spengler
Sylvia Goldstein Stern
Leo Stern
Robert J. Trace
Ruth A. Trout, *GMF*
E. June Bietsch White
Clarence H. Winans
Marcia Lamb Zarger

1937

G. Stephen Allen
Milton B. Asbell
Preston G. Atkins, *GMF*
Kathryn Ward Baird
Lawrence L. Bentz, *GMF*
Carl M. Binder, *GMF*
Jeanne Dum Birrell
Adele Rosenberg Blumberg
Richard N. Boulton, *GMF*
George L. Briner
Tien-Hsi Cheng
J. Thomas Dale
Ruth Crull Doolittle
Alpheus P. Drayer
Helen Elsenhans Everhart
Olaf R. Falk
Margaret Clarke George, *GMF*
Emil Gerchak
C. William Gilchrist, *GMF*
Ruth Youngblud Godshall
John P. Graham
John G. Himmelberger
Eleanor Swope Homes
Margery Black Howe
Mary Driver Hyson
Grace Carver Kline
Erma Slaughter Kohler
Elizabeth Shuck Lower
Edward J. McClain
W. Alexander McCune, Jr., *GMF*
Helen Standing Mack
Gertrude Snyder Maffett
Arthur R. Mangan, *GMF*
Mary Stickell Myers
Lucile Paxton Nell
Ruth Schabacker
George Shuman, Jr., *GMF*
Paul Skillman
James W. Smith
Vance L. Smith, *GMF*
Lewis M. Sterner
Morris M. Terrizzi, *GMF*
Eva Ignatovig Townley
Clinton R. Weidner
David E. Weimer
Haldeman S. Wertz

1938

Janet Brougher Asher
Donald E. Austin
John F. Bacon
J. William Bailey
Dorothy Williams Baker, *GMF*
George W. Barnitz, Jr.
Susan Storm Bartley
D. Stanley Barton
W. Edgar Cathers
Jeanie Deans Chalmers
Fred J. Charley, *GMF*
Robert W. Chilton, *BRA*
Charles H. Davison, *GMF*
Beecher M. Dubbs, *GMF*
Ruth S. Eater
Walter V. Edwards, Jr., *GMF*
Edwin F. Fellenbaum, *GMF*
John B. Gates, *GMF*
Edward B. Goheen
Robert H. Griswold, *GMF*
Virginia Bryan Hagen
John S. Heckles
Clarence B. Hendrickson, *GMF*
Ralston P. Hughes
Aida Harris Hunter
Donald S. Hyde
William R. Jobson, Jr.
Jean Heck Jones
Barbara L. Kahn
Woodrow W. Kern
Carl L. Knopf
Mark O. Kistler
Marian Chadwick Meals
Dorothy McBride Mowery
Dorothy Hyde Mowry
Masayoshi Murakami
Thomas I. Myers

Harry J. Nuttle, *GMF*
Charles Rasner
Annie Waterhouse Ransley
Henry C. Remsberg, *GMF*
John D. Rively
Moses K. Rosenberg, *GMF*
John L. Scott
Raymond J. Shore
Robert M. Sigler
William T. Spahr
Earle N. Stouffer
Mildred C. Straka
Joseph V. Thompson, Jr.
Margaret Brinham Trace
Clarkson Wentz
Janet Persun Yarnall
G. Winfield Yarnall
Louis E. Young

1939

Austin W. Bittle, *GMF*
Madeleine Raring Blair
Alvin G. Blumberg, *GMF*
Austin W. Brizendine
Elizabeth Bietsch Brizendine
Alice Eastlake Chew
Evelyn Clark Craig
Samuel B. Cupp, *GMF*
Yates Snyder Deahl
H. Audrey Ahl Dusseau
Robert E. Eggert
Jerome H. Funk
Christian V. Graf, *GMF*
William R. Headington
William H. Hendrickson
James C. Kinney
Edward E. Knauss, III
Bernard J. Kotulak
Saul Lazovik
Richard H. Lindsey
Robert H. Llewellyn
William A. Ludwig
John H. McAdoo
Margaret Meals McAdoo
John S. McCool, *GMF*
W. Gibbs McKenney, *JDS*
Charles H. McLaughlin, Jr.
T. Edward Munce, Jr., *GMF*
Samuel O. Nelson
Samuel Padjen
J. Harold Passmore
Julia Garber Ranagan
John E. Rich, Sr.
Leon M. Robinson, *GMF*
Joseph Sansone, *GMF*
Edith Jones Scott, *GMF*
Judson L. Smith
Jean Ginter Staff
David Streger
I. Crawford Sutton
Irvin R. Swartley
Marian Rickenbaugh Sweet
Jacob K. Weinman, *BRA*
Anna Ward Ward
Robert B. Wharton
James H. Wood
Jean Lappley Young

1940

Elizabeth Shenton Benson
Guy A. Bowe, Jr., *GMF*
William D. Boswell, *GMF*
Andrew A. Clark, Jr.
William F. Depp
Robert C. Dietz
Phoebe J. Dixon
Irene Yaeger Duncan
Frederick A. Fry, *GMF*
H. Bernard Gingrich
Franklin L. Gordon
Paul L. Gorsuch, *GMF*
Robert B. Greeger
John Gruenberg, II, *GMF*
Earl R. Handler, *GMF*
Thomas B. Hoover
Harry F. Houdeshel, Jr.
Ruth Donahue Houdeshel
George H. Jones, *GMF*
Grace Dempewolf Jones, *GMF*
Mary Vanneman Kinney
Brooks E. Kleber
Yvonne Laird LaBrecque
James Latta, Jr.
Dorothy Wright Marotte
Edwin C. Marotte
Primo P. Mori, *GMF*
William H. Myers

Robert W. Radcliffe
Francis Reinberger
Lillian Jackson Reinberger
Kenneth L. Rounds
Jane Gilmore Scheuer
James E. Skillington
Harry C. Stitt, Jr.
W. Albert Strong
Robert J. Thomas, *GMF*
William E. Thomas
John R. Ulrich, *GMF*
Franklin C. Werner, *GMF*
Arthur A. Waghmann
Suzanne Young Watts
Walter S. Williams

1941

Ralph E. Boyer
C. Paul Burtner, Jr.
Margaret Burt Burtner
John B. Carroll
Charles H. Dickinson
Edward Dixon
Richard H. Ellis
W. Richard Eshelman
Ardythe LeFevre Frey
Mary Dagon Graf
Madelaine Batt Grafton
Lester L. Greevy
Louis M. Hatter
Dean M. Hoffman, II
Marshall D. Jackson, *GMF*
Ann Houseman Jacobs
Samuel J. McCartney, Jr., *GMF*
Sanford S. Marateck
Washington L. Marucci
Elwood J. Mellott
Jean McAllister Metzger
John E. Metzger
Mary B. Mohler
William A. Nickles
Margaret Backus Peel
Cortland R. Pusey
Mary Scheetz Pusey
Jerome L. Rosenberg
Jackson G. Rutherford
Helen Rosengrant Schoenleber
Paul S. Shaffer
Benjamin J. Shinn
Ruth Leavitt Shinn
Carl T. Sieg
Diana Rosenberg Slotznick
Franklin K. Stevens
Mary Peters Tillotson
Mary Mansfield VanBuskirk
Joyce Crickmay Walters
Christof A. Wegelin

1942

Sylvester S. Aichele
John H. Brubaker, Jr.
E. Parker Colborn
Louise Dalton Cooling
Ursula Freas Fallor
Robert H. Fleck
J. Franklin Gayman
William D. Grafton
Raymond C. Grandon, *BRA*
William E. Haak
Young D. Hance
Esther Anderson Harbert
Mary Snyder Hertzler
Dorothy Broverman Huntley
Aleta Kistler Keller
H. William Koch
Susan Rohrer Koch
James H. Lee, Jr.
James W. McGuckin
James C. McKerihan
John J. Rehr
William F. Remphrey
W. H. Revelle, Jr.
Albert E. Schefflen
D. Pierson Smith
Harry W. Speidel, *GMF*
William A. Steckel
Russell R. Tyson, *GMF*
Don H. Williams

1943

Robert S. Aronson
James L. Bacon
A. H. Bagenstose, Jr.
Charlotte Stopford Bagenstose
Alice Holstein Bartholomew
Josephine Matthews Baum

D. Dudley Bloom
Winifred Sharpless Bowers
Samuel D. Brown, Jr.
Fred T. Cadmus
Antonio Cappello, *GMF*
Doris Leib Cook
Jane E. Davidson
Marshall B. DeForrest, *GMF*
J. Fred Dittmann
John A. Duval
Mary Mackie Eshelman
Harry E. Fidler, *GMF*
Mary Fields Gayman
Cissie Gardiner Gieda
Anna M. Halpin
John B. Harley, *GMF*
Larry E. Houck, *GMF*
Laurence S. Jackson
Ruth Cardell Kaufman
William H. Kenety, Jr.
Weir L. King, *GMF*
Marcia Mathews Knapp
H. Paul Leap
Elizabeth Black Lenderman
E. H. Lenderman, Jr.
C. Law McCabe, *GMF*
James M. McElfish, *GMF*
Samuel F. Melcher, Jr., *GMF*
Catherine W. Parr
Winfield A. Peterson, Jr.
Norma Gardner Pumphrey
Richard A. Purnell
Myra DePalma Reimer, *GMF*
Ruth Coleman Ritter
Charles F. Saam
John C. Schmidt, *GMF*
Glenn M. Smith
Meta Chadwick Smith
Ronald Souser
James S. Steele
Roger B. Turk
Robert E. Weaver

1944

John G. Allyn
Susan Smith Allyn
Helen Frendlich Bott
John R. Bowen
David M. Boyd
Jeanne Sloan Boyd
Robert H. Cassel
Helen Kretschmar Colby
Jeanne Faddis Cunliffe
Newton Greenblatt
Morton W. Leach
Edwin E. Lippincott, II
Robert W. Long
C. William McCord
Ralph H. Mitchell
Paul H. Neff, *GMF*
James Prescott, III
Louise Faupel Purnell
David M. Rahausser
Kenneth R. Rose
Catherine S. Stern
Wallace F. Stettler
Barbara Elder Timberlake
Ann Swensen White
Howell O. Wilkins

1945

Marguerite Burke Aldred
J. Paul Bright, Jr.
Helene Boetzel Coho
Charles D. Foster, III
Nancy Tatnall Fuller
George W. Harrison
Margaret Schaeffer Hoar
Zane G. Kaufman
Frederick H. Leonhardt, *JDS*
Claire Merritt Millard
Betty Hummer Mitchell
Ellen B. Morrow
Mary Dickerson Owen
Robert D. Rector, *BRA*
JoAnn Wilson Rose
Mary Houck Speidel, *GMF*
Stratford C. Taylor
Joan Thatcher Tiboni
Ruth Fitch Wallace, II, *GMF*
Doris Spangenburg Wing

1946

Marjorie Monroe Arnold
Jacob L. Barber

Foster E. Brenneman
Frank M. Davis
Frederick L. Edwards
Catherine S. Eitemiller
Nancy Schnell Hambleton
Martha Wentzel Heffelfinger
H. Joseph Hepford
Helen Matthews Hunsecker
Barbara Mulford Jones
Jane Breneman Kulp
Catherine Crouse Moyer
Dorothy F. Nagle
Gilbert P. Reichert
Jean Lentz Saam
Patricia Rupp Sourbeer
Dorothy Leeper Townsend
Forrest A. Trumbore
Carolyn Snyder Turk
Robert S. Wagner
Marvin Z. Wallen
Matilda Chubb Zackey, *GMF*

1947

D. Fenton Adams
Fern McCormick Barber
Rebecca Kidd Bradley
Bernard C. Brominski
G. Raymond Brown, Jr., *GMF*
Robert G. Crist
Marie Pape Foss
Horatio P. Freeman
Jack G. Fuller, Jr.
Robert C. Gerhard
Eugene L. Grandon, *GMF*
Joy Cameron Hicks
Jane Guinivan Holland
Richard K. Hulton
George G. McClintock, Jr.
Wilbert C. McKim, Jr.
In Memory of Elizabeth Roulston
Gibson
James J. Moyer
Robert W. Saunderson, *GMF*
George A. Skinner, *GMF*
Ann Ulrich Starrett
Edward F. Van Jura
Daniel R. Wolf

1948

Austin H. Armistead
Neal D. Bachman
Joseph A. Barlock, *GMF*
Fay Reaser Bates
Patricia Herzig Bernard
Joan Clapp Biel
William F. Borda
Edward G. Brame, Jr., *GMF*
William W. Caldwell
Kjell H. Christiansen
Clinton R. Clinedinst
David H. Cohn, *GMF*
Charles R. Crawford
Gladys Fry Crowl, *GMF*
Kathryn Thomas Daugherty
John J. Donecker
John W. Dresch
James N. Esbenshade
Samuel J. Friedberg
Marvin Goldstein
William T. Guy
Robert K. Hafer, *GMF*
John H. Harris, Jr.
Maxine Starner Harris
George R. Hewlett
Earl F. Hoerner
David S. Hollenshead
John D. Hopper, *GMF*
Oliver N. Hormell, *GMF*
Paul L. Jaffe, *GMF*
Theodore D. Johnson, II
Lester A. Kern
Arthur W. Koffenberger, Jr., *GMF*
John W. Langley, *GMF*
Samuel L. Lebovitz, *GMF*
Norman L. Levin
George G. Lindsay, *GMF*
Nancy Bashore Lindsay, *GMF*
Howell C. Mette, *GMF*
Elizabeth Giese Norton, *GMF*
Marjorie Birs Novotny
Edgar L. Owens
Robert N. Pyle
John A. Roe

Herbert S. Sacks, *GMF*
Herbert S. Sheidy
Robert C. Slutzker
Regina Vath Smythe, *GMF*
James H. Soltow
John W. Springer
Nancy Johns Springer
Alma Anderson Staehle
William H. Starrett
William P. Virgin
Frederick S. Wilson
H. Gilman Wing, *GMF*

1949

John B. Armstrong
James H. Bates, Jr.
Robert S. Berryman
Jane Jackson Betts
William W. Betts, Jr.
Earl H. Biel, Jr.
Mary Ritter Brassington
W. Howard Brassington
Lenore Shadle Caldwell
Thomas D. Caldwell
Emanuel A. Cassimatis, *GMF*
Dallas G. Clouser, *GMF*
Hampton P. Corson
Benjamin H. Danskin
D. Allen Davis
John R. Diefenderfer
David R. Eaby
H. James Elvin
John G. Feinour
Gordon S. Fell
William Gunderman
John P. Hauch, Jr.
William M. Heffley, *GMF*
Donald C. Hoenstine
S. William Hollingsworth, Jr.
James M. Hunter, *GMF*
Klaus Kartzke
Charles A. Langner, Jr.
Robert D. Lowe, *GMF*
William A. McDonald
Robert M. Marine
William H. Mechanic, *JDS*
Gardner B. Miller
Harry A. Nagle, Jr.
Walter S. Norton, Jr., *GMF*
Nicholas P. Papadakos, *GMF*
William G. Pauley
Annie McNeill Pendergast
Robert C. Petersen
Henry A. Peterson
Alan J. Reiter
William S. Rhodes
Rayford A. Robel
Donald A. Robinson, *GMF*
Theodore Rodman
Vincent J. Schafmeister, Jr.
Eleanor J. Schulmann
Lever C. Senft
Ann Wilkinson Shaffer
F. M. Richard Simons
Estelle Bernard Solomon, *GMF*
Ellis E. Stern, Jr., *BRA*
Robert A. Stover
Robert J. Streger
Sally Drake Strong
William J. Taylor
John J. Thomas, Jr.
Ruth L. Troster
Daniel B. Winters
Robert R. Witwer
Fred J. Wolfe
James L. Young, Jr.

1950

Arthur E. Arnold, II, *GMF*
Robert P. Banks, Jr.
Howard G. Baum
Robert W. Bird
James L. Bruggeman
Robert W. Bucher
Marion Wolf Castiglia
William J. Cauffman
Chuman Chun
Virginia Martin Clinedinst
Joseph H. Cooper
Marion Rheam Cronin
Robert H. Crow
Thomas W. Davis
B. Frank Dunkle, Jr.
Rosalie Enders Dunkle
Richard T. Durgin
Charles L. Eater, *GMF*

Theodore H. Ely, *GMF*
Royal T. Farrow
Ethel Peterson Feinour
Arthur C. Flandreau
Janet Elder Flandreau
Elizabeth Thompson Feight
Mary E. Fox
Paul M. Gamble, Jr.
Christine Bunisk Geisler
Ned A. Hall
Russell D. Harris, *GMF*
Richard T. Harrison
Guy T. Holcombe, Jr., *GMF*
Paul W. Houck, *GMF*
Dorothy Heck Houlberg
John D. Howells
Burrell I. Humphreys
Joy Strong Humphreys
Mildred E. Hurley
Marilyn Creasy Ivins
Richard Keiser
L. G. Krieger
William L. Kinzer
Vernon G. LaBarre
David Lyon
Robert M. Mair
Villie Memmi
James H. Murray
P. Dale Neuffer
Robert L. Novell
Fred D. Oylor
Mary Kelly Paxton
Paul R. Paxton
Ann Obermiller Reed
Bruce R. Rehr, *JDS*
Dianne Kehler Relick
Victoria Hann Reynolds, *GMF*
Daniel W. Richards, III
Ellen Petersen Richards
Thomas W. Richards, *GMF*
Marvin L. Richeal
Marian Stephens Sheidy
Paul S. Snoko, *BRA*
Frederic K. Spies
Donald W. Sweet
Eugene R. Steiner
Vilma Meszaros Voll
Robert J. Weinstein, *BRA*
Walther T. Weylman
J. Carl Williams

1951

Jane Lehmer Alexander
James K. Arnold
Gordon W. Baum
Joan Price Berry
Margaret Valentine Berry
Robert E. Berry, *GMF*
G. Kenneth Bishop, Jr., *GMF*
Richard E. Brown
Patricia Johnson Buttenheim, *GMF*
John S. Coffman
Howard E. Deissler
Harold E. Dunkle
Nancy Wiker Enterline
James W. Evans
Joseph E. Favuzza
Jimmie C. George, *BRA*
Joan Kline Gingrich
Joan E. Gipple
Seymour Goldblatt
Paul H. Gronbeck
George W. Heffner
James K. Hershberger
Carl A. High
William M. Hill, Jr., *GMF*
Wayne P. Holtzman
Robert G. Hopson
Maurice H. Ivins
Philip E. Kistler, *GMF*
H. Robert Koltnow
Robert P. Leiby, Jr.
Barbara Barnitz Lillich, *GMF*
George Marsden, Jr.
Sarah Haddock Masland
Joan Edinger Masten
Ralph A. Masten
Margaret McMullen Morrison
Joanne Stafford Mortimer
Donald H. Newman, *GMF*
Lois Price Pauley
Donald E. Piper, *GMF*
J. Richard Relick
Geraldine Snook Ronan
Frank B. Seaboldt, Jr.
John E. Slike

Sally Spangenburg Small
Dewey M. Stowers, Jr.
Emily Mohler Stowers
Paul L. Strickler
W. Robert Van Zandt
John E. Walter
Marian Hallett Weide
John T. Whitmore
Judith Joesting Winters
William J. Zapic

1952

Norman H. Acrenson, *GMF*
Chauncey W. Anderson, Jr.
Clarence E. Arnold
Thomas W. Bare
Richard M. Barnes
Edward M. Bermas, *GMF*
Nancy Martin Breneman
Phyllis Lamont Bruggeman
Philip C. Capice, *GMF*
Nancy Cressman Cashatt
Stanley L. Chin
Jean Eastep Cooksey
Mary Dystra Corson
John E. Corman, *GMF*
Carol Leng Cumming
John B. Davies, *GMF*
Hugh H. Doney
Eileen Fair Durgin
James M. Ecker, *GMF*
H. M. Fredericks, Jr.
Wilbur Gobrecht
Ernest R. Griffith
Margaret Chambers Haines, *GMF*
Paul E. Haines, *GMF*
Charles J. Herber
Marilyn Unger High
Robert H. Householder
Joseph R. Johnson, Jr.
Robert P. Kane, *GMF*
Owen A. Kertland, Jr.
Richard M. Klein
Joan Davisson Knapp
Norman M. Kranzdorf
Michael J. Levitt, *GMF*
William S. Lewis
Kermit L. Lloyd
Andrew R. Lolli
Jean Rowe Loper
John C. Martin
C. Richard Morton
Kathryn Kilpatrick Nunneley
E. Leonard Ochs, Jr.
Dorothy Parker Seaboldt
James G. Park
Richard L. Placey
Elizabeth Barclay Poling
Marianne Luckenbill Punchard
Kenneth M. Querry
Virginia Minich Rahal
Al Rojohn
Doris Price Scoville
William W. Sherman, Jr.
Perry J. Shertz, *GMF*
Scottie L. Shover
Lewis W. Small
Donald L. Snyder
Herbert J. Stolitzky
Donald C. Taylor
Richard G. Trub
Conrad N. Trumbore
Margaret Sayes Van Zandt
Janet L. Weaver
Gerald Weinstein, *BRA*
Claude M. Williams, *GMF*

1953

Edward M. Adourian, Jr.
Ali A. Alley, *GMF*
Robert M. Allman, *GMF*
Philip J. Anderson
Ray B. Brugler
William L. Clovis
Carolyne Kahle Davis
Joseph F. DiOrto, II
Henry C. Engel, Jr.
Phyllis Hood Fredericks
Helen Haddock Gasull
H. Robert Gasull, Jr.
Donald E. Graves, *GMF*
Edward J. Greene, *GMF*
Ann Boyd Hastings
Kenneth L. Harvey

Donald K. Heller
George C. Hering, III
Carolyn Vervalen Hopson
James H. Houser
Marlin S. Keller
Martha Weis McGill
Beverly Carlbom Martin
Donald L. Masten, *GMF*
R. Barbara Mattas
Ronald A. Millian
Jean Gallagher Montgomery
Renee Conrad Morton
Joan Gettig Nagle
Raymond Phillips, Jr.
Shirley Chace Phillips
Anthony J. Pileggi
Kay Gleim Poitras
Caroline Thomas Rhodes
Clifford T. Rotz, Jr.
John B. Schwerdtle
E. Donald Shapiro, *GMF*
Virgil Sherwood
William F. Slifer, Jr.
Loma Rein Slike
Elizabeth Middleton Slim
William L. Stark
Julie Yoshizaki Takahashi
John F. Trickett
Margaret Steele Trickett
Emil R. Weiss, *JDS*
George J. Wichard
Robert J. Wise, *JDS*
David W. Zilenziger

1954

Joan Condon Bare
Paul N. Barna, Jr.
Earl M. Barnhart, *GMF*
Eileen Baumeister Barthel
Jean McAnally Bickel
Jerome L. Block
Robert A. Brown
Donald P. Bush, Jr.
Robert L. Cable
Frank T. Carney, *GMF*
Richard A. Cautilli, *GMF*
Suzanne Ritter Chandler
William C. Chatkin
Robert B. Cohen
Rae Halberstadt Comly
Cardell B. Cook
Judith Harvey Cook
Walter F. Cook
Anne Davey Crumpton
Rebecca Simmons Davies
Harriett Gilmore Deissler
Mark C. Eisenstein
Lawrence Fasano, Jr.
Walter M. Fish, Jr., *GMF*
Donald S. Gerhart
George M. Gill, *GMF*
Nancy MacKerell Grant
Louise Hauer Greenberg
Gloria Ludwig Hamm, *GMF*
Dorothy Dykstra Helder
Betty Simpson Hemmerle
Althea Trochelmann Henrich
Frances J. Holt
Jay M. Hughes, *GMF*
Glenn Jacoby, *GMF*
Robert L. Jones
Howard Kline
Sidney D. Kline, Jr., *GMF*
Harold L. Krueger
Adelaide Houck Lewis
J. Edwin Lintern
Andrew C. Lynch
Ronald L. McGowan
Robert D. McIntyre
Leo T. McMahon, Jr., *GMF*
Edward K. Masland
Richard S. Murray
Charles W. Naylor
Ann Barnard Neithammer
George E. Orwig, II
Joan Cappello Phillips
Laurence V. Radtke, Jr.
Louis H. Reens
Peter J. Ressler
Samuel G. Rhoad
Elton P. Richards, Jr.
Clifford A. Rogers, Jr.
Gerald M. Rosmarin
Elizabeth Zinck Rothenberger
Roberta Lamont Schreiner
Edward F. Sickel, *GMF*
Michael G. Silver

Royce W. Snyder, Jr., *GMF*
Paul C. Tarr, III
Patricia Anderson Trub
Barbara J. Winey
Anne Stayer Wise
Jeanette Leavitt Wurster

1955

Joan Trier Arnold
Carolyn Denslow Baierbach
A. Lawrence Baner
Allen E. Beach
Thomas A. Beckley, *GMF*
Walter W. Belfield, *GMF*
Cody H. Brooks
A. Brooke Caruso
Patricia Estep Caruso
Eugene P. Chell, *GMF*
Albert L. Clark
William B. Comly, Jr.
Neal H. Dice
Ruth Costenbader Doney
James J. Golden, *GMF*
Edith Cooke Goughnour
Lynne Skow Gourley
Neil H. Graham
Forwood E. Hanby, Jr., *GMF*
Kenneth W. High
Louise Howard Hill
Leroy H. Huber
Samuel A. Huffard
Carolyn Blackman Jacoby
Ronald B. L. Jones
William H. Klompus
William N. Knisely
Robert H. Krischker, Jr.
Marjorie Dickie Lehman
Elizabeth Mountz McGowan
Eugene J. Milosh
Theora Minzes Newmark, *GMF*
John E. Perkner
Theodore L. Phillips
Franklin E. Poore, III
Orsanne Rice Potter
Claire Alice Pinney Powell
Mary Cox Powell
Virginia Radonich
Earl M. Reynolds
Jean Coslett Reynolds
John H. Rhein
Henry J. Rutherford, *GMF**
J. Robert Sheppard
Joanne Roulette Slifer
C. D. Smeak
Martha Miller Tappan
Ann Regan Weinert
Glenn E. Welliver
Edith Bean Welliver
John G. Williams, *GMF*
Jeanne Caretto Wilson
Joanne Hardick Wise, *BRA*
Helen Mercer Witt
Grace Eva Katz Wolf
Jane Herr Wright
Barbara Minnick Wyatt
John A. Yoder, *GMF*
Frederick G. Yuengling, Jr., *GMF*

1956

Marvin D. Abrams, *GMF*
Donald P. Allegretto
Mary Walter Baner
Margaret Neff Barna
Frederick L. Barton, *GMF*
Walter E. Beach, *GMF*
Dean J. Bennett
Stephen D. Benson
Susan Thoenbe Bofinger
Roberta R. Bowman
Robert Lee Boyer
Elizabeth Baird Brooks
Ingrid Reinhold Brown
Christine Crum Bush
Andrew A. Cominsky
Ralph S. Densmore, Jr.
Murray S. Eckell, *GMF*
Lawrence C. Fink
Aron B. Fisher
Gayle Compton Folger
Joseph S. Ford, Jr.
Helen Herr Ford
Alice Ditzler Graham
Bruce M. Gourley
Carla J. Hasenritter
Hughy W. Haughney
Barbara Lamb Heller
Barry H. Hellman

Sarah Anderson Hitchcock
George R. Hobaugh
William S. Hudson
Denise Meares Ibbotson
Eleanor Nathan Isaacs
Emma Liener Jacoby
Joan Howell Jones
Shirley Cranwill Jordan, *GMF*
Harold J. Kissell, *GMF*
Constance W. Klages, *GMF*
Arlen T. Klinger
Anne Berchet Knepley
K. Richard Knoblauch
Elise Howland Koehler
John M. Kohlmeier, *GMF*
C. David Krewson, *GMF*
William T. Lynam, III
Anne Thompson Mahoney
John A. Matta
Barbara Boffemayer Newcomer
Miles L. Owen
Jerome L. Popkin
Sam Riddlesberger
Shayle Robins
Gordon B. Rogers, Jr.
Grey F. Rolland
David O. Roser
Frederick E. Roth
Jennifer Westcott Roth
James S. Roth
John W. Runkle
Ivan T. Sakimura
Hillel Schwartz
Frank M. Schwartz
Phyllis Fetterman Sexton
Eleanor Shepherd Sheppard
Edwin E. Smith
David S. Southard
Jeanne Carlson Spangler
Frederick H. Specht
Patricia Matz Steckel
Elizabeth Lusby Stephens
John B. Swift
David D. Theall
Jane Compton Wagenbrenner
John P. Winand
Ruth Conhagen Winand
John H. Witmer
George D. Wright

1957

Theodore C. Auman, III
Robert L. Bailey
Bernard C. Banks, Jr.
Mary Sanford Beckley
Frank Campanelli
Jane Flynn Chance
Margaret Cleveland Clark
Nancy Carpenter Dietrich
Alvin E. Dillman, Jr.
Pauline Friedrich Eaton
Gerald N. Epstein
Charles A. Ferrone
Phyllis Linde Ferrone
Lewis F. Gayner, Jr.
H. Robert Gladfelter
Carole Fischer Gladfelter
Ira D. Glick
John H. Gould, *GMF*
Carl Ware Gould
Margaret Derr Harrison
Thomas A. Hetherington, *GMF*
Patricia Andersen High
Murray E. Hirshorn
Richard Lee Holz
William H. Houpt, *GMF*
Joanne Rothermel Ibach
G. William Junginger
William P. Keen
Elson P. Kendall
William Killcoyne
Barbara James Kline
David W. Knepley
Robert C. Koontz, Jr.
Barbara Neill Koontz
Virginia Burgess Laire
Harry A. Ledgard
Gwen E. Leidy
Benjamin I. Levine, Jr.
W. Greta Szaban Lewis, *GMF*
Don W. Llewellyn
Joan Gallagher Lynam
Susan Schuck Lynam
R. Carol Johnson McGimpsey
French D. Mackes
Elizabeth (Beth) Polley Martin
George E. Martinielli
* Deceased

William Matthews, Jr.
 Marjorie Denslow Meyer
 John W. Miller, Jr.
 Howard M. Nashel
 Warren P. Palzer
 Eunice Stockard Palzer
 C. Richard Parkins
 Sherwood L. Powers
 Anne Neide Pringle
 Rodger L. Ritter
 Anne Louise Strickland Rosen
 Norman J. Schatz
 Laurence M. Schwartz, *GMF*
 Susan Winslow Scully
 Richard H. Seeburger
 Barbara Sklaw Sender
 Elsie Newton Shermer
 R. Michael Shoppell
 Louis P. Silverman
 Herbert Silverstein
 Robert L. Simons
 Gary A. Smith
 Patricia Eshelman Solomon
 Mary Gadd Specht
 Lewis Sprechman
 Margaret Brasaemle Theall
 Robert R. Tompkins
 Nancy Kelley Valego
 William R. Waterman
 Lee Steinwald Widhelm
 Robert J. Woodside
 Vernon W. Woodward

1958

Evan B. Alderfer, Jr., *GMF*
 Walter Barnes, Jr., *GMF*
 Sandra Turner Belfer
 Barbara E. Bergquist
 Robert M. Brasler, *GMF*
 Elizabeth Bloss Breisch
 Jean Heine Brillhart
 Frank M. Caswell, Jr.
 Frederick L. Conrad
 William S. Corey
 J. Robert Dougherty
 Nancy Brown Dougherty
 James P. Fox
 John L. Frehn
 Philip C. Gery
 Carl O. Hartman
 Ronald C. High
 Carol J. Hillner
 Carolyn Shoun Hobaugh
 James L. Hollinger, *GMF*
 Kay Miller Hollinger
 Agnes Bruce Holst
 Barbara Pullis Holz
 Jane M. Holz
 Mary Greensides Jacobsen
 Carole Seidel Jennings
 Jettie Bergman Johnston
 Jerry H. Joyce, *GMF*
 G. Edward Kienzle
 Robert C. Kline
 Morton P. Levitt
 Nancy Brown Lewis
 Edward L. Lindsey
 Norman P. Lush, Jr.
 Barbara Mohler McIlvaine
 Arthur C. Mayer, Jr.
 Gwen Finkey Merolle
 Carl W. Miller
 John F. Morris, Jr.
 M. Cade Brockelbank O'Brien
 Donald O'Neill
 Wilbur M. Otto
 Harold S. Parlin
 Jane Platts Peibly
 Sylvia H. Rambo
 Virginia Wolford Rasmussen
 John D. Riley, IV, *GMF*
 Peter J. Roberts
 Brenda Roberts Roberts
 Doris Weigel Rockman
 Donald H. Roeseke
 William E. Rogers
 Richard H. Shanaman
 Hilma Mimm Slechta
 William V. Solomon
 Inge Paul Stafford
 J. Arthur Steinberg
 P. Frederick Stepler
 Phillip B. Stott, *GMF*
 Jean Kottcamp Surrick
 Kermit R. Tantum
 Anne Biddle Tantum
 Donald C. Thompson

Richard E. Van Deusen
 M. Carolyn Carpenter Walker
 Thomas W. Walker
 Carol Smith Wandres
 Robert A. Watson, III
 John E. Watt
 Joyce Grauel Woodside
 Anne Boyer Woodward

1959

Efrim Adnopoz
 David W. Bartges
 Claude H. Benner
 George H. Bernstein
 Saralee Sachs Bernstein
 Carol Rodman Campanelli
 Joseph B. Carver
 Robert D. Charles
 R. Scott Clements
 Patricia McBath Conrad
 Thomas J. DeMarino
 Elizabeth Bardsley DeMarino
 David M. Ford
 Ann Seewald Frehn
 Michael R. Gardner
 David F. Gillum
 Richard M. Goldberg
 David L. Grove
 Edward Halbert
 JoAnne McKeever Hicks
 Ann Lemkau Houpt
 Cynthia Phillips Hudson
 Laura Ann Hooff Kline
 Jonathan B. Kulp
 Frances Myers Lazorchick
 George K. Livezey, III
 Roy H. Lockwood
 Paul A. Lotke
 Ferdinand C. Lucas, IV, *GMF*
 J. Bruce McKinney
 Carolyn Gourley Mackes
 Thomas L. Moore, Jr.
 Patricia Foster Moore
 Jane Aitcheson Morris
 Ronald M. Naditch
 H. Newton Olewiler, *GMF*
 M. Leslie James Patterson
 John H. Potts
 G. Kirk Pusey
 Alan N. Rademan
 William C. Reed, Jr.
 Joanne Totman Shanaman
 F. Lee Shipman
 Susan Graden Snow
 Christian C. F. Spahr, Jr.
 Beverley Wilson Spahr
 Leonard E. Spangler
 John R. Stafford
 Barbarasue Lovejoy Straughn
 Edward Teitelman
 Judith Flack Urban
 David A. Wachter
 Roberta Snyder Wachter
 E. Douglas Wert, Jr.
 Ruth Gordon Wert
 Nancy Moran Whichard
 Pamela Templeton Wight
 John E. Williams, III
 Carol Dorsey Wisotzki
 William C. Witting
 Mary Moser Witting

1960

Dorothy Phipps Bachman
 Judith Heller Barnes
 Robert W. Barnshaw
 Herbert Bass
 Amy Muncaster Beiler
 Doris Azin Bennett
 Casper P. Boehm, Jr.
 Larry J. Bomgardner
 Merle Tegtmeier Bottge
 Joan Asch Brown
 Judith Graham Carver
 W. Herdman Clark, Jr.
 Carolyn Wherly Cleveland, *GMF*
 Alex T. Collins, III
 Robert W. Crawford, Jr.
 John J. Curley, Jr., *GMF*
 Donald W. Davis
 Stephen Davis
 Ronald T. Derenzo
 Anthony J. DiGioia
 Robert Guy Dilts
 Virginia Mussano Fisfis
 Sandra Hamrick Fisher
 James R. Floyd

Lucy Purvis Ford
 Judith Ward Freeman
 Mark H. Freeman
 William A. Freeman
 Eleanor Smith Gardner
 George F. Gardner, III
 Ira K. Goldman
 Lawrence Green
 Isebill V. Gruhn
 Dale O. Hallam, Jr.
 John T. Hall, III
 Wendy Shea Hartman
 Judith Beck Helm
 Dorothy E. Henwood
 Ann Freas Hines
 Jeanne Kaas Jones
 Edna H. Jones
 E. Bernice Foster Keebler
 Kyra Barna Keffer
 Andrew J. Knuth
 Herbert G. Koehler
 Neil M. Krosney
 Kenneth B. Lacy
 Gary E. Lawton
 Nelson F. Lebo, II
 Marx S. Leopold
 Ellen Weigel Liberles
 W. Robert Lipsky
 David L. McGahey
 Sarah Hollister McKinney
 Susan Van Culin Marion
 Jon R. Mark
 Roger E. Miller
 Rosemary Richtmyer Mostert
 Alta Stinchcomb O'Neill
 Robert B. Ort
 Suzanne Sinclair Owen
 C. Marshall Paul
 Robert L. Pence
 Elizabeth St. Claire Piggot
 Wayne C. Pollock
 Barbara Mahn Pollock
 Jill Prosky Posner
 Thomas B. Price, Jr.
 Nancy Cross Price
 Audrey Rood Rhodes
 Dorothy Gayner Rogers
 John F. Shuman
 Robert F. Slifkin
 Janet Matuska Snyder
 Charles M. Spring
 Richard C. Steege
 Lee R. Supper
 Peter M. Thompson
 Carol Helfrich Webb
 Earl D. Weiner
 Gina Ingoglia Weiner
 William B. Whichard
 Robert A. White
 Emily Robison White
 Robert G. Williamson
 Robert T. Wilson
 Charles E. Wisor, *GMF*
 John E. Yahraes, Jr.
 Charles B. Zwally
 Mary Fox Zwally

1961

Susan Gibbs Adnopoz
 Charlotte Stanley Alderfer
 Peter R. Andrews
 Kenneth J. Barber, Jr.
 James C. Bartoli, *GMF*
 Thomas L. Bauer
 Mary Fischer Bauer
 Sally Christman Berman
 Bruce Bertholon
 Esther Featherer Berry
 Howard T. Branin, Jr.
 Ellen Schoen Brenner
 Wayne H. Claeren
 Harold J. Cohen
 Marshall H. Cohen
 Andrea Adams Cotner
 Harry B. Danner, II
 Timothy S. Dinger
 Carol Wright Drew, *GMF*
 Gary L. Ehrlich
 Alan M. Fleishman
 G. Alfred Forsyth
 Harold R. Gallagher
 Marjorie Lawn Gazzola
 Albert D. Guckes
 John A. Heppenstall
 Susan McDowell Heppenstall
 Michael J. Hermann
 Edward W. Holmes

Chester B. Humphrey
 Steven G. Jalso
 Hugh W. James
 Nancy Hays James
 Linda M. Johnson
 Gretchen Kuykendall Jones
 Carol Hitchens Jordan
 Sandra Hanan Kallman
 Elizabeth S. Keat, *GMF*
 Joan Yaverbaum Leopold
 Stanley W. Lindberg
 Nina Hunsicker Lockwood
 Melissa Haynes Lokay
 Kendall K. McCabe
 Reed McCormick
 William J. McCormick
 Robert L. McNutt
 Elizabeth Matta Masters
 Lynda Bingman Mayer
 Judith Engelke Montanaro
 Nancy Jean Newell
 Nancy Fox Otto
 Ronald C. Page
 Lois Mecum Page
 I. David Paley
 William L. Piel
 Byron G. Quann
 John J. Quirk
 Antonio Ramos-Umpierre
 Frederick S. Richardson
 John M. Rybnik
 Lawrence M. Schechter
 David A. Semier, *GMF*
 Allan C. Sidle
 Barbara Keuch Simons
 Ruth Hoffman Walz Simons
 Gail Massey Simpson
 Michael H. Singer
 Jan P. Skladany
 Carla Seybrecht Skladany
 Tom K. Slater
 Bruce L. Smith
 David G. Stevenson
 John T. Stephens, Jr.
 Barbara Reamy Strite
 Kimball R. Stuhlmuller
 Anne Briner Supper
 William R. Thieler
 Raymond M. Tow
 Richard A. Vickery, Jr.
 Douglas A. Villepique
 Judith Richmond Williamson
 Joanne Macauley Wisor
 Ruth N. Wrightstone
 Elizabeth G. Wylie, *GMF*
 Susan White Yahraes

1962

James N. Acton
 John W. Baker, II
 William D. Bitler
 Kenneth R. Bowling
 William J. Butcher
 Henry S. Crist
 Edward L. Curry
 Thomas S. Davis
 Jay A. Denbo
 Eugene C. Devol, Jr.
 Roberta Armstrong DeWire
 John H. Dinger, Jr.
 William A. Drayton
 Douglas C. Everstine
 Margaret E. Fatula
 Jeffrey R. Fine
 Frances Enseki Francis
 Charles H. Fromer
 Frederick C. Geiger, Jr.
 Kermit B. Gosnell
 Janet Lutz Griegel
 Barbara Fogg Grove
 Barbara Wirth Grover
 Patricia Cardinali Guerrera
 Victor J. Hetrick, Jr.
 Carol Jones Hoadley
 H. Kenneth Jackier
 Frederic Jacobs
 David Jenney
 William F. W. Jones
 Mary C. Cooper Kelly
 Bonnie Brown Koeln
 Julia Kerstetter Lee
 Marvin I. Levin
 Marianne Risser Levin
 Joseph F. Lipinski
 David C. Meade
 Bernard J. Miller
 Penelope L. Mitchell

Frederick A. Morsell
 Jack E. Oppasser
 William E. Owens
 Susan White Pieroth
 Virginia Frost Pusey
 Carol Lawrence Reilly
 John I. Ricks
 Guy M. Selheimer
 Charles B. Smith, *GMF*
 Klara Moser Smith
 James V. Snyder
 William M. Steckley
 Gwen Wilkin Steege
 George F. Stehley, III
 Carl R. Steindel
 James A. Strite, Jr.
 Steven W. Swartley
 John C. Thomas
 Sheldon G. Thomas
 Jane Bidwell Thompson
 James R. Townhill
 Richard Tull
 Carol Weiant Villepique
 Lynn Hammond Voss
 Durbin L. Wagner
 Donald G. Wilson
 Carol A. Winzer
 L. David York, Jr.

1963

John D. Adams, Jr.
 Joseph Andrews
 Barbara Stunt Andrews
 Patricia Bennett Baker
 Mara Treicis Beliveau
 Edward D. Blanchard
 Jerry D. Bole
 Judith L. Bostock
 Walter S. Buckley, III
 Donald R. Buxton, Jr.
 Thomas E. Cadwallader
 Barbara Buechner Carroll
 Benjamin A. Cero
 David P. Chapin
 Susan Pastore Chapin
 Prudence Sprogell Churchill
 Grace McConnell Clark
 Michael S. Collins
 Keith B. Cooper
 Joseph K. Crea
 Lester A. Creps
 Janet Miller Crooks
 Peter O. Crouse
 Ann Conser Curley
 Charles D. Daugherty
 Kathryn Kuhn Daugherty
 Steven P. Delp
 Jean VanOrmer Dick
 Judy Moneta Dillon
 Donald T. Dockstader
 Robert T. Donohue, *GMF*
 John W. Douglas, Jr.
 Allan M. Elfman
 Justine Englert
 David J. Eskin
 Suellen Peltz Ettinger
 Joan Spicer Evans
 James J. Eyster, Jr.
 Anne Pinkerton Fago
 Allen D. Field
 Peter J. Figdor
 Louis E. Fisher
 Gordon D. Fronk
 Jeffrey H. Gorham
 William M. Gormly
 Robert A. Green
 Allan K. Grim, Jr.
 Terrence K. Hancock
 John F. Harper, Jr.
 E. Susan Kline Hart
 John C. Hendricks
 Marian Moorhouse Hetrick
 Susan C. Jacoby
 Ann Johnson Jobbins
 Nancy Arndt Jones
 James F. Jordan
 Richard B. Keohane
 Ann Thompson Kern
 Barbara Geyer Keyser
 Fred K. Kirchner, Jr.
 Elliott Klein
 Alice E. Knox
 Robert L. Knupp
 Marion W. Lee
 Carol Durbin Lebo
 Judith Tomlinson Leight
 Jeanne Heller Lindberg

Beverly Sadler Lindsay
 Marianne Huddy Lipa
 John R. McClelland
 Jean Weller McClelland
 Charles R. McCracken
 Susan Schmidt McCracken
 Barbara Duvall McGraw
 John C. McGee
 Judith Everett McKee
 Susan Chase Marston
 Ann DeTuerk Maud
 Albert G. Miller
 Anne Harvey Mustienes
 Judith Northam Oppasser
 Harry B. Packard
 H. Donald Pasquale
 Judith Morris Pusey
 Donald A. Reade
 John E. Rich, Jr.
 Ronald T. E. Rizzolo
 Edward F. Rockman
 H. Roy Rosen
 Philip A. Rosenfeld
 George W. Rupprecht
 Jo-Anne DeMonte Sabin
 William K. Schantzenbach
 Edith Vedova Schmitz
 Whitney B. Smyth
 Jerrilyn Bingham Snyder
 Boyd Lee Spahr, III
 William E. Spatz, *GMF*
 John H. Standing
 Linda Goodridge Steckley
 Richard D. Steel
 Joan Stohr Stehley, *GMF*
 Mary Wagner Stouffer
 Thomas C. Test
 Dolores Barnes Truitt
 Graydon A. Tunstall, Jr.
 Barbara Price Vandegrift
 Louis J. Verdelli
 Nicholas A. Volpicelli
 Charles Wagner
 Emily Zelinsky Wagner
 Barbara Greer Warden
 Richard M. Warden
 Charles Wasilko
 George L. Whitwell
 William L. Widmyer
 Ezetta Walter Widmyer
 Walter G. Wilcox
 Sydney G. Willson, III
 Michael W. Witwer
 Samuel W. Witwer, Jr.
 Susan Murphy Yates
 M. Suzanne Stright York
 Richard M. Young
 Carol Lindstrom Young

1964

Sandra Currier Andrews
 Robert W. Andrus
 Carolyn Green Anstine
 Susan Earl Baker
 Robert E. Bellet
 Carolyn F. Betts
 Susan Noblit Boutros
 Stephen P. Burger
 Virginia Compton Burger
 Katharine Strite Caldwell
 C. M. Calhoun
 Nancy M. Carlson
 Keith B. Cohick
 Hilma Forsberg Cooper
 Carole Crompton Creps
 Brooke W. Davis
 John Colby Dill
 Adele Schneider Dowell
 Norman Farrell, Jr.
 Roberta Williams Francis
 Alexander S. Frazier
 Brenda Sadler Golden
 Barbara Hunt Gothie
 Arthur J. Greendlinger
 David S. Greene
 Jane Howland Grim
 Richard H. Guckert
 Virginia Sutton Harvey
 Robert E. Hindle
 Glenn E. Hitchens
 Leslie Davidson Hobbs
 Dona E. Houseal
 Emily Zug Huebner
 Joseph B. Icenhower, Jr.
 George F. Ingersoll, Jr.
 Theodore J. Johnson
 Joan Enck Kahler

R. Bruce Keiner, Jr.
 Fred R. Klunk
 Richard H. Koeln
 Norma Souser Kocher
 Stuart M. Lamb, Jr.
 John P. Laszlo
 Sandra Schiavo Laszlo
 John L. Leroy, Jr.
 Susan Crowley Leroy
 Alison Loew
 Sally Phillips Luczak
 William M. McCarty
 Clark A. McKnight
 Douglas R. McPherson
 Barbara Jacocks Mohn
 Michael R. Rapuano
 Mercline M. Riddlesberger, Jr.
 Millard M. Riggs, *GMF*
 Constance Courtright Rockman
 J. Daniel Shaver, Jr.
 Patricia Hitchens Shaver
 Paul M. Showalter, Jr.
 Faith Kazanjian Smith
 Milton R. Smith, Jr.
 Carolee Birch Smith
 Marilyn Detweiler Splete
 Peter C. Spring
 Mary Ellen Templeton
 David M. Tiffany
 Carolyn Jill Toy Veit
 Fritz Weidner
 Patricia Sterling Warren
 Edward H. White
 Patricia Hughes Winters
 Judith Frost Witthohn
 James H. Woodring
 Betsy Jones Woodring

1965

Carol Raskopf Ances
 John C. Arndt, IV
 Sally Howard Barnes, *GMF*
 Dennis L. Barton
 James R. Brinkley, Jr.
 Josie Prescott Campbell
 Mary Eloise Coffman
 John P. Derrickson
 Frederick H. Etherington, Jr.
 Gordon T. Faulkner
 Judith Greenfield Faulkner
 Shu-Man Fu
 Felicia Gaskin Fu
 Patricia Miller Gable
 Virginia Hendler Greendlinger
 John R. Griswold
 Thomas H. Hallam
 T. Stevenson Hansell
 Judith Henning Harper
 Jane Clyma Harwood
 Andrew C. Hecker, Jr.
 Ronald B. Heisey
 Alexander L. Hendry, Jr.
 Gilbert B. Henyon
 Neil A. Hermann
 Richard R. Hoffman, Jr.
 James D. Hutchinson
 Linda Ashcraft Hutchinson
 John R. Jackson
 Jonathan E. Kintner
 Edwina Challinor Kintner
 William S. Kreisher
 Nicholas M. Langhart
 Leslie D. Leong
 Donald S. Leslie
 Barbara Fenn Leslie
 Glenn C. Limbaugh, Jr.
 Charles H. Lippy
 Joseph P. Madden
 Harry E. Mangle, Jr.
 J. Thomas Means
 Robert S. Mettler
 Pamela Searles Miller
 Michael A. Nemec
 John H. Nichols
 Carol F. Nuetzman
 H. Elaine Koran Orenberg
 Karen L. Petterson
 Robin Miller Pyron
 Diana Dupy Rand
 Lawrence A. Rand
 Christina Schmidt Selheimer
 Raymond E. Scurfield
 Linnea Imler Sennott
 Joyce Wise Shapiro
 Ida Jane Sia
 Jay F. Smith, III
 Ann Smith Snyder

Barbara A. Spengler
 Penelope A. Taylor
 Arthur L. Tillman, III
 Katherine Rader Tyler
 Charles D. Ulmer
 Nancy Steinbeck Volpicelli
 Sue Herley Wasilko
 Beverly Morey Williams
 Lewis A. Wilson
 Emilie M. Young Wilson
 Nancy A. Witherell
 Anne Seldon Witkos
 Brian J. Zahn

1966

C. Berkeley Adams
 Sara Dabney Carr Allen
 Robert E. Bergman, Jr.
 John A. Bierly
 Judith Myers Bierly
 Carolyn Bryant
 Elizabeth Parker Calhoun
 Leonard M. Carrescia
 Donald R. Charles, Jr.
 Alfred R. Derwart
 Charles K. Detwiler, Jr.
 Judith Smith Detwiler
 Nancy Wilson Donohue
 James A. Edris
 John L. Euler
 Mary Jane Long Euler
 Katherine Broberg Foehl
 Robert P. Gersh
 Peggy Margolies Gordon
 Jo-Anne Orent Halpern
 David C. Hancock
 Frances Decker Hancock
 Karen Barrowclough Hancock
 Kathryn Crumb Hansell
 William T. Hewlett
 Robert G. Holston
 Pamela Grafton Holston
 Eugene C. Homan
 Judith McDowell Icenhower
 Jay J. Jacobs
 Anne D. Jillson
 Kim Larsen Johnson
 Pamela E. Kangas
 Nicholas J. Kempf, III
 Lester A. Krasno
 Edward F. Lamson
 Richard A. Levie
 David E. Manoogian
 Judith Aux Manoogian
 Roberta S. Matthews, *GMF*
 W. Thomas Mecouch
 Harris P. Miller
 Virginia Hodge Miller
 Robert T. Montague, Jr.
 Eleanor Weinle Montague
 Israel Leo Motiuk
 Peter C. Muller
 Lewis D. Oppenheimer
 Doris Detweiler Ormsby
 Barbara T. Ostrowski
 Patricia Salisbury Ponte
 Allison Browning Richards
 David Richman
 John W. Ritchie, Jr.
 Paul A. Robell
 Gretchen Wolff Roy
 Carolyn Asher Sabatini
 Ralph W. Sharer
 Serita Spadoni, *GMF*
 Peter G. Stanley
 Sally Stevenson Stevens
 Nancy C. Stewart
 Allen H. Stix, *GMF*
 Reginald K. Templeton, Jr.
 Margaret McBee Tiffany
 W. Thomas Tither, Jr., *GMF*
 Patricia VanAllen Voigt
 Elizabeth A. Wagner, *GMF*
 Jeffrey R. Wendell
 John R. Winfield

1967

Christopher R. Adams
 Jeffrey S. Bohrman
 Nicholas R. Brown
 Melinda Chaffinch
 Benjamin M. Compaine
 Suzanne Tindall Crump
 Samuel B. Cupp, Jr.
 Pamela White Devine
 John W. Donaghy
 Charlotte H. Dumas

Carolyn Smith Ecker
 Charles W. Ehrlich
 Thomas M. Fanta
 Thomas K. Farley
 Carol Baker Farley
 James S. Feight, Jr.
 Lorraine Howe Fenton
 John B. Ferguson, III
 Kenneth F. Foley, Jr.
 W. Kenneth Freed
 Sarah Flower Getty
 John C. Goodchild, Jr.
 Susan Husband Goodchild
 E. Howard Goodwin, Jr.
 Susan Alpine Griswold
 Gary A. Grosart
 Susan Stover Grosart
 Mina Jane Grothey
 Ronald E. Gruver
 John A. Gussow
 David A. Hall
 Richard C. Hollinshead
 Margery Porch Hollinshead
 Judith Lederer Homan
 John S. Hopper
 Jo Ann K. Intili
 Peter D. Jacobson
 G. Richard Katzenbach
 Jeffrey P. Kistler
 Alan D. Kliner
 Eleanor Edie Kliner
 Edwin L. Kugler
 Sally J. Lannholm
 William W. Lowe
 Arthur J. MacDonald, Jr.
 Linda DiVincenzo MacDonald
 Allen MacPhail
 Karen Swam Mangle
 Donald E. Miller
 Stephen H. Mintz
 Frank E. Mitchell
 Marsha Moroh
 Michael S. Moyer
 Larry D. Pearson
 Edward A. Phillips, Jr.
 Karen Sigler Phillips
 Kay Malloy Plunkett
 Carolyn Freas Rapp
 Mary Eckstein Ritchie
 Darryl A. Robbins
 Darlene Rhodes Ruark
 Betty Lou Ginsburg Rubenstein
 William J. Sarno
 J. Michael Schnell
 Charles W. Slavin
 James David Sleeper, Jr.
 Charles William Smith, Jr.
 E. Brooks Warner, II
 Cornelius Jeffery Weber
 Carlie Kleinfelder Wetzell
 T. Rumsey Young, Jr.
 Jon C. Zimmerman

1968

Eric C. Alessandrini
 Anonymous
 Richard B. Anthony
 Curtis W. L. Balthaser
 Ruth Anne Baumgartner
 Gail Shortlidge Arnold
 Paul S. Beard
 Vernon L. Blodgett, Jr.
 Janet Wollentin Blodgett
 Emilie McAbee Burris
 Elisa K. Campbell
 Jane Parks Charles
 Arnold S. Cohen
 Julia A. Corenzwit
 R. Anne Cassell Crocker
 Alfred K. Day, III
 William W. Dickinson, Jr.
 Carleton H. Endemann, Jr.
 Dianne Klein Freed
 Esther I. Friedman
 Bernard D. French
 Russell F. Fulmer
 Lillian B. Gaskin
 Nancy Snell Griffith
 Gerald G. Groff
 Marco Coffin Groff
 Gregory D. Hall
 Patricia A. Hansen
 Ronald C. Hanson
 Sandra Dixon Hanson
 Daniel R. Hoffman
 Robert B. Jefferson, GMF
 Katrina Clinton Johnson

Paulette Goerig Katzenbach
 Gary M. Lightman
 Milton McDonnell
 Elizabeth A. Mackintosh
 Stephen C. MacNett
 Kathe Young MacPhail
 William F. Maletz
 Lawrence M. Miller
 Richard P. Mohlere, Jr.
 Patricia Hally Mohlere
 Stewart M. Mohr
 Edmund C. Myers
 Steven C. Myers
 Susan McDowell Myers
 Cynthia Marantz Pearson
 George C. Pyron
 Joanne I. Rippke
 Alan M. Sandruck
 John W. Schefflen
 Diane Obersheimer Schultz
 Peter J. Schweizer
 Karen Smith Sellers
 Michael H. Shenkman
 Gwendolyn M. Shisler
 Paul H. Silverman
 Alan C. Smith
 Floyd C. Smith
 John J. Snyder, Jr.
 Amos W. Stults, Jr.
 Philip Sze
 Robert L. Thomas
 H. David Thompson, III
 Andros B. Thomson
 Michael A. Della Vecchia
 Dorothy Hinkel Wayne
 Jerome B. Weiner
 Carol L. White, GMF
 Marcia Ettinger Williams
 Edward C. Wilson, III
 Karen E. Winegardner
 Priscilla McKinley Young
 Thomas V. Zug, Jr.

1969

John E. Atherholt
 Susan Tinney Beard
 Gwenn Sigafos Benner
 Susan Mooney Bird
 Michael Anthony Bloom
 Sara Kister Blumenthal
 Douglas P. Boyd
 Robert H. Burris
 Clifford Carey
 Kenneth L. Cashdollar
 Nicholas G. Ceppi
 Elizabeth Wheeler Ceppi
 M. Lyn Costenbader
 Thomas W. Crocker
 Kathleen Humlhanz Cupp
 David C. Haile
 William C. Humphries
 Lonnie Marc Epstein
 Robert B. Eskin
 Richard D. Fissel, GMF
 Julia A. Francis
 Jane E. Gardner
 Arthur J. Gatz, Jr.
 Julia Leverenz Gatz
 Gwyneth Davis Gillingham
 Gerda M. Pfeifer Gjullin
 Jeri Yaverbaum Greenberg
 John Griffith
 Linda Dalrymple Henderson
 Theodore K. Jursek
 J. Craig Kerr
 Jane K. Kirk
 Richard A. Kolb
 Barbara Glasmire MacPherson
 Barbara Boos Maletz
 Robert J. Martin
 Karen MacKinnon Martin
 Jill Anne Massey
 David A. Nielson
 Linda Davies Palesis
 Fred T. Richards, Jr.
 Diane (Dee) Rothman Rosenthal
 Joan Eisenberg Schnell
 M. Elizabeth Herley Shenkman
 Donald M. Sherwin
 Rudy L. Slingerland
 Gregory V. Smith
 Adele Keigler Smith
 Mary Stuart Smith
 William E. Snell, Jr.
 Pamela Richards Snell
 Elizabeth A. Snowdon

E. Kay Morgan Snyder
 C. Stewart W. Spahr
 Elliot A. Strokoff
 Gailey C. Teller
 Frank Alanen Tyska, GMF
 Thomas L. Walters
 Kent H. Weaver
 Louis McKnight Weaver
 Robert G. Welch
 Robert Jordan White
 Hope Brown Zug

1970

Henry deH Alexander
 Sue Ferguson Atherholt
 Edwin Michael Blumenthal, Jr.
 Patricia Ann Caminiti
 Robert H. Cashel
 Frances Goodkin Cohen
 Merritt Cordray
 Diane Dailey
 Linda Kriebel Day
 Timothy M. Dewald
 Eric S. Drake
 Thomas R. Eshelman
 Nancy Gorman Eshelman
 Adria A. Fredericks
 Stephen Germany
 Dorothy L. Giustra
 Nancy Spence Haile
 Marjorie Day Hamlett
 Christopher R. Holliday
 Mary F. Jenkins
 Raymond C. Jones
 Charles H. Leven
 Deborah A. Lyle
 Elizabeth J. McCune
 Kent M. McLean
 Robert F. Neville
 James J. Nolan, Jr.
 David M. Ott
 John A. Palesis
 H. Scott Perrill, Jr.
 Elaine Louise Reichard
 Jeffrey D. Scott
 Gregory A. Staley
 Charles L. Strum
 Rebecca Ware Strum
 Lawrence W. Torley
 Victoria Stuart Torley
 Thomas A. Wallitsch
 Linda Bips Wallitsch
 Kathryn Lee Wilson

1971

Margaret Sobolewski Alexander
 Marilyn F. Balmer
 Sharon Cuyler Berger
 David Bolin
 Bonnie Husband Brown
 David L. Brownold
 Jane E. Coleman
 Robert B. Eskin
 Michael P. Dimon, GMF
 Jack C. Ebeler
 Mary Robertaccio Ellis
 David R. Eshelman
 James R. Etter
 Stephen A. French
 Joel Friedman
 Barbara C. Greenberg
 Karen P. Houck
 Richard M. Koenig
 Susanna M. Koethe
 James M. Landis
 Carol A. Litrides
 Howard C. Long, Jr.
 Susan Miller Lynn
 Mary F. McCullough
 Elizabeth Ann Martire
 Mary Swann Ott
 Karen N. Pflug-Felder
 Peter D. Schnur
 Lisa Hickman Walters
 Joseph J. Wilson

1972

Edmund A. Abramovitz
 Anne M. Bacon
 Catherine M. Biondi
 Faith A. Cox
 Carolyn Wallace Ebeler
 Donald B. Ellis
 Richard L. Guerrein
 James E. Henry
 Stephen H. Hoffman

Janet Whiffen Jones
 Cary R. Jubinville
 William H. Kenety, V
 Linda J. McDowell
 Katherine J. Mehrstens
 Mary E. Moser
 Walter H. Ohar
 Kathy J. Phillips
 Bradford L. Reed
 David R. Short
 Deborah H. Siegel
 Donna E. Stephens
 Louis N. Teti
 Susanne Zug Thompson
 Wesley T. Viets
 Suzanne T. Watkin
 Donna DiVincenzo Welch
 Christine Lacy Wilson

NON-ALUMNI PARENTS

Mr. and Mrs. H. Osborne Aaron
 Dr. and Mrs. David Abbott, GMF
 Mr. and Mrs. Maurice Abrams
 Mr. and Mrs. Richard Abrons, JDS
 Mr. and Mrs. Kenneth L. Adams
 Mr. and Mrs. George L. Aldridge
 Mrs. Irene K. Alexander
 Mr. and Mrs. T. Nelson Amos
 Mr. and Mrs. Albert H. Angerman
 Mr. and Mrs. William H. Ashton,
 GMF
 Mr. and Mrs. Harold B. Atkinson, Jr.,
 GMF
 Mr. and Mrs. Joe W. Ausherman
 Reverend and Mrs. Jule H. Ayers
 Mr. and Mrs. Donald W. Bacon
 Mr. and Mrs. Robert R. Balmer
 Dr. Harold D. Barnshaw, GMF
 Dr. and Mrs. Seymour Baron, GMF
 Mr. and Mrs. Raymond W. Bauer,
 JDS
 Mr. and Mrs. Edward V. Beach, GMF
 Mr. and Mrs. Allen Belden, GMF
 Mr. and Mrs. Herman Berkowitz
 Dr. and Mrs. A. A. Berrettini
 Mr. and Mrs. Walter C. Betts
 Mr. and Mrs. Harold Bierman, Jr.
 Mr. and Mrs. Sherwin Birnkrant,
 GMF
 Mr. and Mrs. Earl Biscoe, Jr., GMF
 Mrs. E. H. Bishop
 Mr. and Mrs. Harold Blatstein
 Dr. and Mrs. Walter R. Bohnenblust,
 GMF
 Mr. and Mrs. Robert E. Boos
 Dr. and Mrs. Edward J. Brezinski
 Dr. and Mrs. Charles Brody
 Mr. P. G. Brown
 Mr. and Mrs. Bill B. Campbell
 Mr. Thomas A. Casey, Sr.
 Mr. and Mrs. David G. C. Cassa
 Dr. and Mrs. C. Barrus Ceppi, GMF
 Mr. and Mrs. Thomas Cestaro, GMF
 Dr. and Mrs. Robert Ciampa, GMF
 Mr. and Mrs. John P. Clomps
 Mr. and Mrs. Glenn R. Coates
 Mr. and Mrs. Joseph H. Cobrain
 Mr. and Mrs. James H. Cohill
 Mr. and Mrs. E. Donald Congo
 Mr. and Mrs. Raymond B. Connell
 Mr. Raymond D. Craig, Jr., GMF
 Mr. and Mrs. Oliver W. Crichton
 Mrs. Margaret R. Crowley, GMF
 Mr. and Mrs. Robert M. Dare, Jr.,
 GMF
 Mr. and Mrs. Isadore Davis, GMF
 Mr. and Mrs. Walter Danielsen
 Mr. and Mrs. Robert P. Desch, GMF
 Mr. and Mrs. Delmar R. Dhein
 Mr. John W. Douglas, GMF
 Mr. and Mrs. Robert W. Dudley
 Mr. and Mrs. William W. Durden
 Mr. and Mrs. Eugene W. Dykes
 Mr. and Mrs. Edwin F. Eadie, Jr.
 Mr. and Mrs. Maurits E. Edersheim,
 BRA

Colonel John S. Egbert
 Mr. and Mrs. Carl S. Ehrlich
 Reverend and Mrs. Oswald Elbert
 Mr. and Mrs. Robert W. Eltonhead
 Mr. and Mrs. Ralph D. Espenship,
JDS
 Mr. and Mrs. Frederick H.
 Etherington
 Mr. and Mrs. Albert L. Etzel
 Mr. Allen W. Faet
 Mr. and Mrs. Colman Feinberg, *GMF*
 Reverend and Mrs. William H.
 Felmeth
 Mr. and Mrs. John A. Fiedler, *GMF*
 Mr. and Mrs. Peter Flagg, *JDS*
 Dr. and Mrs. Saul M. Fleegler
 Mr. and Mrs. James A. Fleming,
GMF
 Mr. and Mrs. John S. Florenz
 Mr. and Mrs. Wilbert E. Foertsch
 Dr. and Mrs. Arthur Frankel
 Mr. and Mrs. John L. French
 Mr. and Mrs. William C. French, Jr.
 Mr. and Mrs. Jacob E. Fricker, Jr.
 Mr. and Mrs. Alvin Friedman
 Mr. George Friedman
 Dr. and Mrs. Herbert P. Fritz
 Mr. and Mrs. Joel M. Fuerst
 General and Mrs. William J.
 Gallagher, *GMF*
 Mrs. Louis A. Ganz
 Mr. and Mrs. Robert A. Gardner, Jr.,
GMF
 Dr. and Mrs. Frank M. Gatti
 Mr. and Mrs. Edward R. Gavenus
 Mr. and Mrs. Russell E. Gaylord
 Mr. and Mrs. G. Lee George, *GMF*
 Reverend and Mrs. Charles H.
 Germany
 Mr. and Mrs. Joseph Gerofsky, *GMF*
 Mr. Frank A. Gerolamo, Jr.
 Mr. and Mrs. Howard S. Gilliams
 Mr. and Mrs. Leon C. Gogel
 Mr. and Mrs. William B. Gold, Jr.
 Mrs. Mary A. Goman
 Mrs. Sylvia P. Goodman
 Mr. and Mrs. Bernard S. Goodrich
 Mrs. Jane T. Goodwin, *GMF*
 Mr. Harold S. Gorschman, *GMF*
 Mr. and Mrs. David A. Graham
 Mr. and Mrs. Robert F. Graybill
 Mr. and Mrs. Patrick Gribbin
 Dr. and Mrs. James J. Griffith
 Mr. Gordon C. Griswold, *GMF*
 Mr. and Mrs. Allan G. Gruchy
 Mr. and Mrs. Anthony F. Gulotta
 Mr. and Mrs. Robert W. Harvey
 Mr. and Mrs. Robert M. Heller
 Mr. and Mrs. Elmer A. Hennig, *GMF*
 Mr. and Mrs. Albert Hirsch
 Mrs. Elizabeth H. Hoebener
 Dr. Reuben Hoffman
 Mr. and Mrs. Hubert D. Hoke
 Mrs. May S. Hopkins
 Dr. and Mrs. William Horwitz
 Dr. and Mrs. William M. Howdon
 Mr. and Mrs. Harrison D. Hutson
 Dr. Charles A. Hudson, *GMF*
 Mr. and Mrs. Eric H. Humphries
 Dr. and Mrs. George A. Hyman, *BRA*
 Mr. and Mrs. Charles G. Jack
 Mrs. David Jacobs, *GMF*
 Mr. and Mrs. Bradford S. Jones, Jr.
 Rear Admiral and Mrs. Frank C.
 Jones, *GMF*
 Mr. and Mrs. Robert M. Jones, *BRA*
 Mr. and Mrs. Charles M. Kanev
 Mr. and Mrs. Jair S. Kaplan, *GMF*
 Mr. and Mrs. Seymour Kazan
 Mr. and Mrs. Roy C. Keene
 Mr. Bernard Keiser
 Mr. and Mrs. Robert A. Kennedy
 Mr. and Mrs. Paul Kessler
 Mr. and Mrs. Richard C. King
 Dr. and Mrs. W. Bernard Kinlaw,
GMF
 Mr. and Mrs. Paul Kline
 Mr. and Mrs. Robert L. Kopenhaver
 Mr. and Mrs. John G. Kovach, *GMF*
 Dr. and Mrs. Milton K. Krantz
 Mr. and Mrs. Anthony Krzywicki
 Mrs. Margaret D. Langham
 Mr. and Mrs. Marcelino E. Lavin,
GMF
 Mr. and Mrs. Robert R. Leighton
 Mr. Paul Lewis Lentz
 Samuel H. Levy, Esq., *GMF*
 Mr. and Mrs. James J. Liebowitz
 Mrs. Charles W. Lienau

Mr. and Mrs. Herman Lightman
 Mr. and Mrs. William Linenberg
 Dr. and Mrs. John G. Locke
 Mr. and Mrs. Richard S. Lowell
 Mr. and Mrs. William H. Lowery,
GMF
 Mr. and Mrs. Arthur J. Lyle
 Mrs. E. Crenshaw McCollum
 Mr. and Mrs. William H. McCrea, Jr.,
GMF
 Mr. Howard C. McGarity, *GMF*
 Mr. and Mrs. Robert J. McGregor,
GMF
 Dr. and Mrs. Russell C. McLucas,
GMF
 Mr. and Mrs. Walter G. MacLaughlin
 Dr. and Mrs. Simon Marcson
 Mr. and Mrs. Sed O. Marcy
 Dr. and Mrs. Karl E. Markin
 Mr. and Mrs. Stanton C. Martens
 Mr. and Mrs. Richard A. Martin
 Mr. and Mrs. Anthony Massa
 Dr. and Mrs. Francis C. Mayle, Jr.,
GMF
 Mrs. Clifford R. Maynard
 Mr. and Mrs. Harry E. Miley, Jr.
 Mr. and Mrs. J. D. Miller
 Captain John X. Miller, *GMF*
 Mrs. Sara R. Miller
 Dr. and Mrs. Russell E. Miller, *GMF*
 Mr. and Mrs. Robert L. Mitchell,
GMF
 Mrs. Doris V. Mix
 Mr. and Mrs. Carl K. Miyabara
 Mr. and Mrs. Joseph R. Moffitt
 Mr. and Mrs. Walter J. Moore
 Mr. and Mrs. William T. Morrow
 Mr. and Mrs. George V. Morton, Jr.
 Mr. and Mrs. Jack D. Moses, Jr.
 Mr. and Mrs. Philip Moskowitz
 Mr. and Mrs. Marion P. Mourning,
GMF
 Mr. Frank M. Moyes
 Mr. and Mrs. Shaw Mudge
 Mr. and Mrs. Ludwig W. Mueller
 Mr. Warner Hunter
 Mr. William G. Nagle
 Mr. and Mrs. William A. Nixon
 Dr. and Mrs. Theodore W. Nowicki,
 Jr., *GMF*
 Mrs. Helen P. Oberdorf
 Mr. and Mrs. Hugh E. O'Brien, *GMF*
 Mrs. Julia T. O'Hara
 Dr. and Mrs. Alexander H. O'Neal,
GMF
 Mr. and Mrs. James M. Orr
 Mr. and Mrs. Nathan R. Owen, *GMF*
 Mr. and Mrs. E. Marshall Palmer
 Mrs. John A. Panganas
 Mr. and Mrs. George P. Pappas
 Mr. and Mrs. Gordon R. Parker
 Mr. and Mrs. John Pasquariello
 Mr. and Mrs. Alex P. Pawlowski
 Mr. Fred A. Pennington, *BRA*
 Dr. and Mrs. Harry M. Persing, Jr.,
GMF
 Mr. and Mrs. Gordon W. Pfau, *GMF*
 Mr. and Mrs. Peter A. Plevel
 Dr. and Mrs. Hime S. Poliner, *GMF*
 Mr. and Mrs. Charles A. Pomerantz,
JDS
 Mr. and Mrs. Ernest F. Pratt
 Mr. W. James Price, *JDS*
 Mr. and Mrs. Michael Prowe
 Mr. and Mrs. James W. Quiggle
 Mr. and Mrs. Edward C. Radue, *GMF*
 Mr. and Mrs. Eric Rehfeld
 Dr. and Mrs. John Reichel, Jr., *GMF*
 Mr. and Mrs. Richard N. Renshaw
 Mr. and Mrs. Sydney Reuben, *GMF*
 Mr. and Mrs. Paul S. Rich
 Mr. and Mrs. Paul M. Richardson
 Mr. Bernard Richman
 Mr. and Mrs. Albert W. Riggs
 Mr. and Mrs. Robert N. Rinker
 Captain and Mrs. William C. F.
 Robards
 Mr. and Mrs. Frederic L. Rockefeller
 Mr. and Mrs. Kenneth Rogers
 Mrs. Louis C. Rose
 Mr. and Mrs. Harold Rosenbluth,
GMF
 Mr. and Mrs. Arnold Ruegg, Jr.
 Mrs. C. Frederick Rugh
 Mr. and Mrs. G. M. Rundbaken
 Mr. and Mrs. William E. Rurode
 Mr. and Mrs. Nathan Saul
 Mr. and Mrs. John W. Scott
 Mr. and Mrs. John P. Seabrooke

Mr. and Mrs. William D. Shaffer
 Colonel and Mrs. Charles A.
 Shaunesey, Jr.
 Mr. and Mrs. Robert N. Shriver
 Dr. and Mrs. Israel Shulman
 Mr. Alex Sienkiewicz
 Dr. and Mrs. Meyer M. Silverman
 Mr. and Mrs. Laird H. Simons, Jr.,
GMF
 Colonel and Mrs. William W. Smith,
 Jr.
 Mr. and Mrs. Eldon S. Sizer
 Mr. and Mrs. Neal W. Slack
 Mr. and Mrs. Joseph B. Slamon, Jr.,
GMF
 Mr. and Mrs. Philip Slutz
 Mr. and Mrs. Arthur J. Smith
 Lt. Col. and Mrs. V. E. Smith
 Mr. and Mrs. Eugene A. Snyder,
GMF
 Mrs. Jean M. Snyder
 Mr. and Mrs. John E. Sobolewski
 Dr. and Mrs. Anton W. Sohrweide,
GMF
 Mr. and Mrs. Harvey L. Spaenburg,
 Jr., *GMF*
 Mr. and Mrs. Robert H. Spotts
 Mr. and Mrs. Gordon L. Squire
 Mr. and Mrs. Bernhardt K. Stabert
 Mr. and Mrs. Karl E. Steffen
 Mr. and Mrs. Richard L. Steffen
 Mr. and Mrs. Frank Steinberg
 Mr. and Mrs. Jackson M. Stewart
 Mr. and Mrs. Andrew E. Strakele
 Mr. and Mrs. William M. Stremblau,
GMF
 Mr. and Mrs. Richard Strohm
 Mr. and Mrs. Eldon G. Studebaker,
GMF
 Dr. and Mrs. Robert L. Sutton, *GMF*
 Mr. and Mrs. Paul A. Sweetser

Mr. and Mrs. Harrison M. Symmes
 Mr. and Mrs. John B. Talerico, *GMF*
 Mr. and Mrs. Leon Tanzer
 Mr. and Mrs. James A. Taylor
 Mr. and Mrs. Louis S. Taylor
 Mr. and Mrs. Aram M. Terzian
 Mr. Frank E. Thackeray, *GMF*
 Mr. and Mrs. Louis F. Thompson
 Mr. and Mrs. Louis Torres
 Mr. and Mrs. Robert Trone, *GMF*
 Mr. and Mrs. George B. Trousoff,
GMF
 Mr. Jacob W. Tucker, Jr.
 Dr. and Mrs. David C. Tudor
 Mr. and Mrs. Andrew Tully
 Mr. and Mrs. Richard H. Turnbull,
BRA
 Mr. and Mrs. Frank Tyska
 Mrs. Robert N. Tyson, *GMF*
 Mr. and Mrs. Reed W. Varner
 Mr. and Mrs. John A. Vey
 Mrs. John A. Wachter
 Mrs. Valerie V. Wagg
 Dr. and Mrs. Richard F. Wagner
 Mr. and Mrs. Charles E. Ware, *GMF*
 Dr. and Mrs. Richard T. Weidner,
GMF
 Mr. and Mrs. Robert H. Weiner,
GMF
 Mr. and Mrs. Donald Weinreb, *GMF*
 Mr. and Mrs. Frederic H. Weis
 Mr. and Mrs. Carl T. Welte
 Mr. and Mrs. John J. Whalen
 Mr. Frank L. White
 Mr. and Mrs. Philip N. Whittaker
 Mr. and Mrs. Ellis Ray Williams
 Mr. Thomas S. Wilson
 Mr. and Mrs. Walter M. Wilson
 Mr. and Mrs. Samuel Winokur, *BRA*
 Mr. and Mrs. Edward J. Zamm

CORPORATIONS

Aero Oil Company
 American Bank and Trust Co. of Pa.
 American Oil Foundation
 Armco Foundation
 Frank Black Mechanical Services Co.
 Carlisle Tire and Rubber Division, Carlisle Corporation
 Carpenter Foundation
 Exxon Education Foundation
 The Equitable Life Assurance Society of the United States
 Ford Motor Company Fund
 Foundation for Independent Colleges, Inc.
 General Motors Corporation
 Household Finance Corporation
 Irwins Dairy, Inc.
 Keystone Carbon Company
 Kimberly-Clark Foundation, Inc.
 McNeil Laboratories, Inc.
 Merrill Lynch, Pierce Fenner & Smith Foundation, Inc.
 The New York Community Trust
 Pennsylvania Power and Light Company
 Philip Morris, Incorporated
 The Reader's Digest Association, Inc.
 Restaurant Equipment House, Inc.
 The Sears-Roebuck Foundation
 Shenk Athletic Equipment Company
 Stoner Associates, Inc.
 The United Telephone Company of Pennsylvania
 Woolrich Woolen Mills, Inc.

FOUNDATIONS

The Althouse Foundation
 The Charles H. Clark Foundation
 The Charles A. Dana Foundation, Inc.
 Christian R. and Mary F. Lindback Foundation
 Metzger College Trust Fund
 The Seven Trees, Inc.

MATCHING GIFTS COMPANIES

The A. S. Abell Company Foundation, Inc.
 Aetna Life & Casualty Company
 AIRCO, Inc.
 Alcoa Foundation
 Allied Chemical Foundation
 American Bank and Trust Co. of Pa.
 American Brands, Inc.
 American Home Products Corporation
 Armstrong Cork Company, Inc.
 Armco Foundation
 Atlantic Richfield Foundation
 Bethlehem Steel Corporation
 Bristol-Myers Company
 Brockway Glass Company Foundation
 Carpenter Foundation
 Chubb & Son Inc.
 The C.I.T. Foundation, Inc.
 C.N.A. Foundation
 The Chase Manhattan Bank
 Chemical Bank
 Columbia Gas System Service Corporation
 The Colwell Company
 Crompton & Knowles Corporation
 Dresser Foundation
 Eaton-Dikeman
 Equitable of Iowa
 The E. S. B. Foundation
 Exxon Education Foundation
 The First National Bank of Boston
 First National City Bank
 Frank E. Gannett Newspaper Foundation, Inc.
 General Electric Foundation
 Girard Bank
 W. T. Grant Company
 Gulf Oil Corporation Foundation
 John Hancock Mutual Life Insurance Company
 Haskins & Sells Foundation, Inc.
 Hercules Incorporated
 The Hershey Foods Corporation
 The Hoffman-La Roche Foundation
 IBM Corporation
 ICI America Inc.
 INA Foundation
 Johnson & Higgins of Pennsylvania, Inc.
 Johnson & Johnson
 The Kidder Peabody Foundation
 The Kiplinger Foundation, Inc.
 Lever Brothers Company
 The Lukens Steel Foundation
 McGraw-Hill, Inc.
 The Merck Company Foundation
 Metropolitan Life Insurance Company
 Minnesota Mining and Manufacturing Foundation, Inc.
 Mobil Foundation, Inc.
 The N. C. R. Foundation
 National Distillers and Chemical Corporation
 New England Mutual Life Insurance Company
 The Northwestern Mutual Life Insurance Company
 Ortho Pharmaceutical Corporation
 PPG Industries Foundation
 The Peat, Marwick, Mitchell Foundation
 Pennsylvania Power & Light Company
 Pennwalt Foundation
 The Penton Publishing Foundation
 The Pren-Hall Foundation, Inc.
 The Prudential Insurance Company of America
 Price Waterhouse Foundation
 Provident National Bank
 Reliance Insurance Companies Foundation
 R. J. Reynolds Industries, Inc.
 Richardson-Merrell, Inc.
 Rohm and Haas Company
 The Rust Engineering Company
 Scott Paper Company Foundation
 The Service Bureau Corporation
 St. Regis Paper Company
 The Sherwin-Williams Foundation
 The Singer Company Foundation
 Smith, Kline and French Foundation
 Stauffer Chemical Company
 J. P. Stevens & Co., Inc. Foundation
 Stone & Webster, Incorporated
 TIME Incorporated
 Towers, Perrin, Forster & Crosby, Inc.
 Transamerica Corporation
 The Travelers Corporation
 Uniroyal Foundation
 Wallace-Murray Foundation
 Warnaco Inc.
 Westinghouse Educational Foundation
 Weyerhaeuser Company Foundation
 The Arthur Young Foundation

METHODIST CHURCH GIFTS

Board of Education
 Central Pennsylvania Conference
 Southern New Jersey Annual
 Conference

NON-ALUMNI FRIENDS

Frank N. Bowers
 James S. Bowers
 Madeline S. Carman
 Carl P. Clare, *JDS*
 Mrs. Sylvester Evans
 First Church of Christ Scientist
 Mary Dickinson Club
 Mary Sharp Foucht, *JDS*
 David L. Gleim
 Alfred N. Hartshorn, *GMF*
 Mrs. Edward M. Kempner
 Mrs. Herbert L. Luria
 Mrs. Anna Sutton Moore

George L. Morrison, Jr., *GMF*
 Mrs. Alice B. Myers, *GMF*
 Mary Ames Raffensperger
 Robert L. Reamy, *BRA*
 John N. Robinson, *BRA*
 Mrs. Daniel Rose
 Alexander Rush, *JDS*
 Mrs. F. Glen Shoemaker, *GMF*
 Mulford Q. Sibley, *GMF*
 Nathan Silberstein, *GMF*
 Mrs. Isaac Silverman
 John K. Wentzel, *GMF*
 John H. Wilson

NON-ALUMNI FACULTY AND ADMINISTRATION

Dennis Akin
 George Allan
 Bruce Andrews
 Paul Angiolillo
 Robert W. Belyea, *GMF*
 Elizabeth Billings
 Marianna Bogojavlensky
 William Bowden
 David Brubaker, *GMF*
 Truman Bullard
 Mary Frances Carson
 Charles Chronister
 Frederick P. Ferre
 Arturo Fox
 Barry Gaal
 Harold Gillespie
 Patricia Gorham
 William Harms
 Heber R. Harper
 Jeanne Hockley
 Claire M. Hornick
 Amos B. Horlacher
 A. Craig Houston
 Robert Howard, *GMF*
 Charles Jarvis
 Jean Jeffries
 Jean Katz
 Paul Kaylor, *GMF*
 Joyce Keiser

C. Flint Kellogg
 John King
 W. Wright Kirk
 Lois Landis
 Robert Leyon
 Edward Luckenbaugh
 Carolyn J. Martin
 Enrique Martinez-Vidal
 Kathleen L. Nailor
 K. Robert Nilsson
 Arthur D. Platt, *GMF*
 Margaret Platt
 J. Forrest Posey, Jr.
 Dieter Rollfinke
 Joseph Schiffman, *GMF*
 H. Wade Seaford
 Donald Seibert
 Charles C. Sellers
 Richard Sheeley
 Gene Stout
 Ian T. Sturrock
 Charles Twichell
 Bruce Vogelsong
 Lee Ann Wagner
 David Watkins
 Neil Wolf
 Dottie Wolfe
 John Wolten
 Henry Young

...in the news



Richard Herzler, New Era

Dr. Saunderson

Israel Honors Trustee

The City of Reading, Pennsylvania celebrated Sidney D. Kline Day on Sunday, November 18 in honor of the 1924 alumnus. Mr. Kline, a trustee of the College, was awarded the Prime Minister's Medal of the State of Israel at a tribute dinner that evening.

As Chairman of the Board of the American Bank and Trust Company, Mr. Kline was cited for his "lifetime of dedicated service as humanitarian, champion of brotherhood and friend of Israel," proclaimed Reading's mayor, Eugene Shirk.

The proclamation by Mayor Shirk also chronicled Mr. Kline's accomplishments as a banker, a businessman and concerned civic leader who was "instrumental in the hiring of many members of racial and ethnic minorities," and who "helped to create employment opportunities" and expand the economy of the Reading area.

The Prime Minister's medal was presented by the Israeli Economic Minister of the United States and Canada, the Honorable Z'ev Sher, on behalf of Prime Minister Golda Meir.

Hope for Future

Dr. Robert W. Saunderson '47 is a man deeply dedicated to his job. As Chief of the State Hospital for Crippled Children at Elizabethtown, Dr. Saunderson has spent the last fourteen years heading a team of professionals whose task is "to create citizens for the future who have hope."

Among his accomplishments at Elizabethtown, Saunderson has speeded up in-patient care. In 1959 a patient stayed an average of 200 days at the hospital, while today he spends only 70 to 80 days at the center. "We're a treatment center," notes Dr. Saunderson, "not a custodial service." He is the only staff resident on call 24 hours a day.

Saunderson is a graduate of the University of Rochester School of Medicine. Several years ago he received the Commonwealth Award for Public Service and a citation from the Crippled Children's Society. His daughter, Carol, graduated from the College in 1973.

Coach is Honored

Arthur D. Kahler, a former coach at the College who now resides in Carlisle, was one of five people selected for induction into the Kansas All-Sports Hall of Fame at the University of Kansas.

During his seven years at the College, from 1935 to 1941, Kahler coached football and track and compiled an overall record of 29 wins, 25 losses and 5 ties. He led the football squad to one of its two undefeated seasons in its history, with a 7-0-1 record in 1937. The only other such season was the war-abbreviated season of 1917, which had a 5-0 record.

Kahler is a native of Arkansas City and a graduate of Southwestern College in Winfield.

Eric Erlandsen, Baritone

A headline in the Garden City, N. Y. *Newsday* recently noted that Eric Erlandsen '67 was "Waiting to Trade Flashlight for Spotlight." Erlandsen, assistant chief usher at the Metropolitan Opera for the last six years, finally got his chance to do so on November 2. Abandoning the tiers for center stage, he made his debut at the Lincoln Center Library, singing Mahler's *Songs of a Wayfarer*, and songs by Poulenc and Copeland.

The 28-year old baritone studied for three years at the Julliard School of Music, and has worked with the Camerata Singers and numerous amateur opera companies.



Dr. Howard L. Rubendall receives the "outstanding civilian" award from Brig. Gen. W. S. Goodwin.

'Outstanding Civilian'

Dr. Howard L. Rubendall '31, President of the College, was presented the U.S. Army's Outstanding Civilian Service Award on Friday, October 26.

The medal is awarded to citizens whose service to society is "outstanding," and whose contributions significant. In Dr. Rubendall's case, the achievements cited were notable: for several years, he has chaired the Pennsylvania Rhodes Selection Committee and has served on the Executive Committee of the Foundation for Independent Colleges. According to Lt. Col. Victor Marcus, Chairman of the Military Science Department, the citation "specifically reflects Dr. Rubendall's efforts with the Reserve Officer Training Corps (ROTC) at the College." He was credited with the integration of military science professors into the all-college committee structure and the encouragement of cross-enrollment with other institutions.

Brig. Gen. Warner S. Goodwin, who presented the Army award at ceremonies at the U.S. Army War College, noted that ROTC benefits from the "high standards of academic excellence and integrity" which the College instills in its cadets.

Statistics

ENGAGEMENTS

- 1966—J. DALLAS WINSLOW, JR. to Linda Esper.
- 1969—MADELYN C. McDADE to I/Lt. James H. Massey, Jr. A February wedding is planned.
- 1972—JOHN BUCHANAN MELVIN to Carolyn L. Shaffer.
- 1973—PAUL M. YATRON to Charlene A. Negri. A summer wedding is planned.
- 1973—DEE P. WISOR to Janice L. Pundsack. An August wedding is planned.

MARRIAGES

- 1930—Mrs. CATHERINE PORTER HALLOCK to John E. Shoemaker on November 17. They reside at Mease Manor, Dunedin FL 33528.
- 1954—Dr. GEORGE M. GILL to Linda Albee Davy on November 2. They reside at 2 Ridge Terrace, Short Hills NJ 07078.
- 1962—Dr. JOSEPH F. LIPINSKI, JR. to Burnet B. Sumner on September 8.
- 1965—BRUCE G. WALKER to Linda M. Honsaker on August 18. They reside in West Ocean City, Md.
- 1965—DENNIS L. BARTON to Tania B. Rozenski on August 18. They reside at 713 Dryden St., Silver Spring, Md.
- 1967—SALLY J. LANNHOLM to Lawrence D. Dillin, Jr. on October 6. They reside at 8150 Lakecrest Drive, Apt. 410,

Greenbelt MD 20770.

- 1969—ANNETTE E. SHAULIS to Jon A. Barkman on June 9. They reside at 524 S. Rosina, Apt. 7, Somerset, Pa. 15501.
- 1969—SUSAN P. LOKERSON to Richard L. Eichholtz on August 11. They reside in Lake Hiawatha, N.J.
- 1969—DAVID A. WHITE to Christine M. Ksionska. They reside at Pennsbrook, Levittown PA.
- 1969—BERT W. MAIDMENT, JR. to Mary Jane Reid on September 29. They reside in Morristown, N.J.
- 1969—SUZANNE DELP LAIL to Gregory Carroll on August 11. They reside at 1583 East Shore Drive, Ithaca NY 14840.
- 1970—LINDA NORTON to MICHAEL PENDERGRASS on September 30, 1972. Their address is HHC, 3d BOE, APO New York 09139.
- 1970—RICHARD A. KITTLE, JR. to Karen S. Kuhn on September 15. They reside in Nashua, N.H.
- 1971—LINDA CLINE to Richard M. Mohler in December.
- 1971—MARK LICHTY to Wendy Bernd on August 25. They reside in Sellersville, Pa.
- 1972—RICK A. MURDOCK to SANDRA L. SMITH on November 17. They reside at 223 Southampton Drive, Silver Spring, MD.
- 1973—VICTORIA A. SWEETSER to Edward Likman on September 2. They reside at 1062 North 10th St., Reading, Pa. 19604.
- 1973—WADE H. BERRETTINI to JOELLEN BERGER on August 11. They reside in Philadelphia, Pa.

- 1973—PAMELA HADDON to Roger H. Ford on June 2. They reside at 1500 Duke University Road, Apt. J3C, Durham, N.C. 27701.
- 1973—MARY ANN KELSO to Findley L. McConnell on February 10, 1973. They reside at 305 Oakland Avenue, Pittsburgh PA 15213.
- 1973—GARY E. BEACH to Margaret C. Todaro on January 24.

BIRTHS

- 1960—To Professor and Mrs. CHARLES M. SPRING, a daughter, Devin Margaret, on June 20.
- 1961—To Rev. and Mrs. JEFFREY C. WOOD, a daughter, Rebecca Marie, on September 18.
- 1964—To Mr. and Mrs. Samuel Francis (ROBERTA WILLIAMS) a son, Christopher Samuel, on March 10, 1973.
- 1965—To Mr. and Mrs. FREDERICK H. ETHERINGTON, JR., a daughter, Rebecca Fletcher, on September 3.
- 1966—To Mr. and Mrs. GEORGE W. WILLIAMS a son, Harry, on July 31.
- 1968—To Captain and Mrs. J. M. Moore (JOANNA REGNIER) a daughter, Amanda Jo, on September 6.
- 1969—To Mr. and Mrs. THEODORE AFFLECK a son, Timothy Royer, born July 12.
- 1969—To Mr. and Mrs. GREGORY ABELN a daughter, Alexis, on August 14.
- 1969—To Mr. and Mrs. BARRY L. NISSLY (KATHRYN MALLICK) a daughter, Heidi Sue, on November 16.
- 1969—To Mr. and Mrs. NICHOLAS G. CEPPI (ELIZABETH WHEELER) a son, Brian Nicholas, on August 16.
- 1969—To Mr. and Mrs. Linton L. Moyer (CAROL LORAH) a son, Todd Linton, on October 29.
- 1971—To Mr. and Mrs. William Davis (DONNA SHAUNESY) a daughter, Emily Rainbow, on August 23.
- 1971—To Mr. and Mrs. JEFFREY S. AUSTIN a daughter on November 27.

hall of fame

Know a classmate whose accomplishments as an athlete and citizen should not go unnoticed? Supply us with that person's name and class in the space below and we'll send you a detailed form requesting complete information about the nominee.

A candidate for the Dickinson Sports Hall of Fame must have demonstrated good citizenship in his post-graduate days, besides having been a student leader and good athlete as an undergrad. The bylaws prohibit the selection of anyone until ten years after their graduation.

Nominee's name: _____
Class: _____
Mail to: _____

Personal Mention

1913

JOHN C. GROOME, formerly of Carlisle, has moved to 9100 East Cactus Road, Scottsdale, Ariz. 85260.

1919

Dr. and Mrs. ELWOOD W. STITZEL '20 (MARIETTA HOLTON), Altoona, PA., celebrated their 50th wedding anniversary by taking their family to Europe.

1925

The Honorable ARTHUR L. JOSEPH, Vineland, N.J., has become counsel to the firm of Lipman, Antonelli, Batt & Dunlap. Judge Joseph is retired judge of Cumberland County, N.J.

NORMAN W. LYON retired as executive director of Citizens Library and Cultural Center, Washington PA. on October 1. He led the commu-

nity to build what is often described as the most attractive public library building in the state. Under his leadership the annual receipts of the library were increased in 15 years from \$7,000 to \$240,000 and the circulation from 29,000 to 300,000.

Rev. HORACE N. OLEWILER retired in June after 49 years in the ministry of the Eastern Pennsylvania Conference of the United Methodist Church, the last five of which were spent in Prospect Park, PA. His new address is 1832 Catasauqua Road, #19-B, Bethlehem PA 18018.

1926

Mrs. RUTH CHAMBERS KELLER is director of the

newly-constructed United Services Agency Multi-Service Center, Tunkhannock, Pa. The pilot project, a first nationwide, is shared between Wyoming and Luzerne Counties. The center, a one-stop location, will provide help in everything from day care for children to help and counseling for personal problems, food stamps, medical and financial assistance, aid in seeking employment or legal services. Mrs. Keller had formerly been director of child welfare services in Wyoming County.

1929

Dr. VERNARD F. GROUP is heading the Northwest Adams County residential so-

licitations for the 1974 United Fund campaign. He is the recipient of the United Fund Campaign Award for outstanding citizenship during the 1972 drive. Dr. Group lives in Gardners, Pa.

Dr. CHARLES HOBAN, professor of communications at the University of Pennsylvania's Annenberg School of Communications, has been awarded the Pennsylvania Learning Resources Association's Pioneer Award for his work in the field of media and education. Dr. Hoban is associate editor of *AV Communication Review*, author of *Movies that Teach*, *Focus on Learning* and numerous other studies, and co-author of *Visualizing the Curriculum and Motion Pictures in Education*.

1930

CLARENCE A. WEL-LIVER retired in April after 43 years service with the Bell Telephone Company of Pennsylvania and has moved back

to Williamsport, Pa. where his address is 301 West Ninth Avenue. During his previous stay in Williamsport, he was the recipient of the Dr. Benjamin Rush Award by the Lycoming County Medical Society as well as the annual award of the Lycoming County Council of Community Services.

1931

WILLIAM H. McCREA, JR., Newville, Pa., was honored recently at a testimonial dinner held by Cumberland County Democrats.

1933

Dr. ROY R. KUEBLER, JR., professor of biostatistics at the University of North Carolina, represented the College at the Founder's Centennial Celebration at Bennett College, Greensboro, N.C. in October.

Dr. FREDERIC W. NESS, president of the Association of American Colleges, led the second session of the symposium

on "Individual Library in a Collective Society" in October at Berry College, Mount Berry, Ga.

THOMAS V. ZUG retired on October 4 on the occasion of his 40th anniversary with the Provident National Bank, where he was serving as vice president in the Trust Administration Department.

1934

HARRY C. ZUG, a member of the College board of trustees, represented the College at the inauguration of Dr. Theodore Wood Friend III as the eleventh president of Swarthmore College in October.

1935

GEORGE E. REED, director of public information for the Associated Petroleum Industries of Pennsylvania, Harrisburg, was elected president of the Pennsylvania Public Relations Society in November. Active also in the Public Relations Society of America, he is a past president

of the Central Pennsylvania Chapter, and in November was the chapter's delegate to PRSA's 26th National Conference, Honolulu, Hawaii.

1937

Captain JOSEPH J. TUBBS, Chaplain, USN retired, has been named to the newly created post of campus manager at Wesley College, Dover Del. Capt. Tubbs had previously been director of the Naval Chaplains School in Newport, R.I. He resides with his family in Chestertown, Md.

Ms. E. KATHERINE CO-WELL SLOCUM has become associated with Realty 360 at 2166 Moorpark Road, Thousand Oaks CA 91360.

FRED B. GIEG, SR., Hollidaysburg, Pa., has been elected president of the Blair County Bar Association.

Dr. MILTON B. ASBELL was the recipient of the A.F.L.-C.I.O. Community Award for 1973 for his professional work as chief of the Dental Rehabilitation Center of the Camden County General Hospital. The center performs dental services for the handicapped.

1940

FREDERICK A. FRY, senior assistant librarian at The Pennsylvania University Libraries, has retired after 26 years service. Prior to his tenure with PSU, he had been affiliated with Rochester Public Library and Syracuse University Library. He holds memberships in the American Library Association and the Pennsylvania Library Association.

1941

Dr. WALTER T. JAMES, professor of sociology at Saginaw Valley College, has been named dean of the new



Richard H. Ellis '41



Edwin S. Nailor, Jr. '48

College of Professions at Saginaw. The College of Professions will include career programs in engineering, technology, nursing, youth services, journalism, community services, criminal justice and data processing.

Lt. Gen. RICHARD H. ELLIS, commander of NATO's Allied Air Forces Southern Europe in Naples and the 16th Air Force at Torrejon Air Base, Spain, has been selected for promotion to four-star rank and assignment as the next Air Force vice chief of staff.

1942

Retired Air Force Colonel WILLIAM R. WILSON is clerk of the District Court of Salisbury, Maryland. He began as commissioner at the court in May 1972 and became the clerk of the court in December of the same year.

1946

Mrs. NANCY SCHNELLI HAMBLETON was elected mayor of Lawrence, KS in April. As the first woman mayor of Lawrence, her main duty is presiding over the weekly city commission meetings and setting the direction of the commission's activities. Her major challenge this year is the distribution of revenue sharing money, a first for any mayor of the community.

1948

JOHN D. HOPPER, CLU, general agent for Equitable of Iowa, Harrisburg, Pa., was elected a trustee of The National Association of Life Underwriters at the organization's 1973 annual convention held at the Palmer House in Chicago, Ill., in September. Mr. Hopper is a member of the College board of trustees.

EDWIN S. NAILOR, JR., has been promoted to assistant marketing manager of the medical division of Statham Instruments, Oxnard, CA. where he is also responsible for developing the product and marketing activities of the company's medical transducer line. He resides with his wife and two children at 1127 Garrido Drive, Camarillo, CA. 93010.

Dr. WESLEY G. BROGAN has been promoted to associate professor of behavioral science and education and chairman of that department at Greensboro, N.C. College. He recently received his Ph.D. in special education from the University of North Carolina. He resides with his wife and three children in Yanceyville, N.C.

Mrs. JEAN McINTYRE GEOFFROY is Director of Psychological Services and Guidance for Nevada County, CA. Schools. She also teaches courses in psychology, counseling and guidance for Sierra College. She resides at 7433 Westgate Drive, Citrus Heights CA 95610.

1949

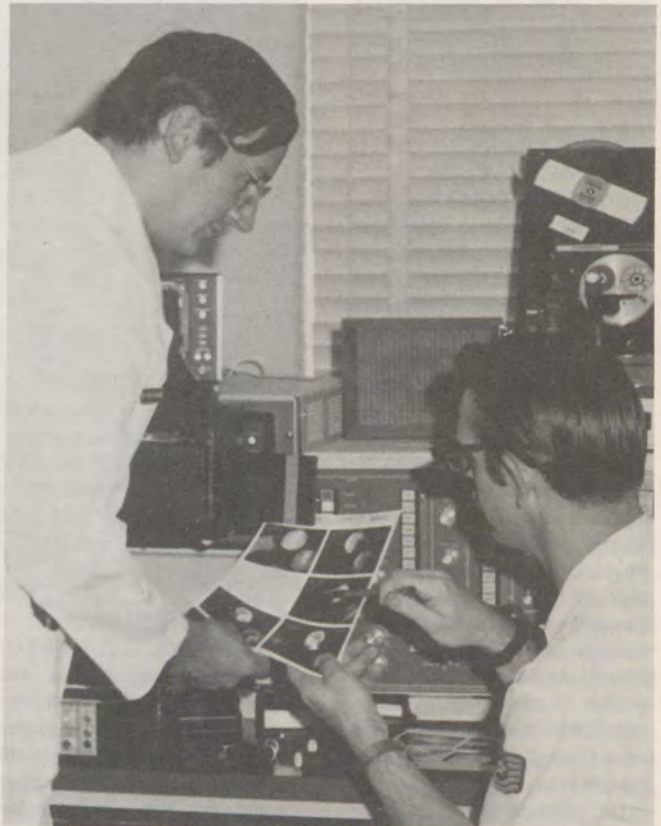
ELWOOD W. STITZEL is business manager at Roland Park Country Day School, Baltimore MD.

1950

CHARLES J. ROSENTHAL, Harrisburg PA., was recently appointed chief of Veterans Services for the Pennsylvania State Employment Service in the Bureau of Employment Security. He is a LTC in the Quartermaster Corps of the U.S. Army Reserve.

1951

Mrs. MARY ANN



Col. R. L. McGowan '54 and medical technician confront isotopic scanner in assessing myocardian perfusions.

SPENCE ALTMAN is co-author of *How to Manage Your Law Office*, the first book to bring a true management perspective to the practice of law. Mrs. Altman came to the consulting field from the practice of law. She resides at 513 North Wynnewood Avenue, Narberth PA.

1953

Mrs. JULIE YOSHIZAKI TAKAHASHI, Wayne, N.J., represented the College at the inauguration of Dr. William J. McKeefery as president of William Paterson College of New Jersey in October.

ROBERT L. KEUCH is presently serving as First Deputy of the Appellate Section of the Criminal Division, Department of Justice.

He was a speaker at the Federal Bar Association Convention in Chicago in September and was recently among a group of experienced attorneys selected by the Attorney General to prepare a recodification and reform of the Federal Criminal Code. He resides with his family in McLean VA.

1954

PETER J. RESSLER has merged his practice with and is a partner in the firm of Shearer, Mette, Foerner and Woodside, Harrisburg, Pa.

Dr. RONALD GOLDBERG was recently appointed to the faculty of Philadelphia College of Osteopathic Medi-

cine and Surgery as an instructor in the department of osteopathic principles and practice. Three members of the class of 1973 are freshmen there: FRANK WILCZYNSKI, FRANK NOONAN and JAMES TAYLOR.

Colonel RONALD L. MCGOWAN has been appointed Director of Medical Education at the David Grant USAF Medical Center and promoted to the rank of Associate Clinical Professor of Medicine at the University of California School of Medicine, Davis. Dr. McGowan is consultant to the Surgeon General USAF in internal medicine and cardiology, and holds membership in the Society of Air Force Physicians, the American College of Cardiology and the Council on Clinical Cardiology of The American Heart Association. The co-author of eleven scientific articles, Dr. McGowan is presently engaged in clinical research in the assessment of myocardial perfusion by radioisotope techniques. Stationed at Travis Air Force Base, he lives with his wife (ELIZABETH MOUNTZ '55) and three children at 411 Sandstone Drive, Vacaville, CA 95688.

PAUL C. TARR III has joined the Horace Mann Educators Corporation as senior vice president of the Individual Division. He had previously been employed for 17 years with INA. A member of the American Society of Chartered Life Underwriters, Mr. Tarr serves as a member of the Life Insurance Agency Management Association, Quality Business Committee.

1955

Mrs. BARBARA MINNICK WYATT is teaching remedial, corrective and developmental reading at Cherry

Hill West High School, NJ.

1958

SYLVIA RAMBO has been named adjunct professor of law and is teaching the "Law and Poverty" at the Dickinson School of Law. Miss Rambo serves as a Cumberland County public defender and practices law in Carlisle, Pa.

1959

ROY H. LOCKWOOD has been admitted to the New York State Bar and is now in practice in the firm of Sullivan, Skipworth, Gough, Sommers and Smith, Rochester, N.Y. He resides with his wife (NINA HUNSICKER '61) and two children at 48 Astor Drive, Rochester, N.Y. 14610

FREDERICK C. NORTON has completed a one year course in public administration at Cornell University, as part of the Education for Public Management Program, sponsored by the Civil Service Commission and Department of Health, Education and Wel-

fare. On September 17 he assumed the position of deputy executive officer, Division of Narcotic Addiction and Drug Abuse, National Institute of Mental Health, Bethesda, Md., where he resides with his wife and three sons.

GORDON B. MOWRER was overwhelmingly elected mayor of Bethlehem PA in November. A partner in the insurance firm of Hampson-Mowrer, he is the sixth mayor since Bethlehem was incorporated. He resides with his wife and three children at 254 Bridle Path Road.

Dr. ROBERT M. DAVIS is practicing in York PA. In June he successfully completed the Board of Plastic and Reconstructive Surgery Examination.

1960

JAN M. WILEY, Dillsburg, Pa., has added two lawyers, William D. Schrack III and Niles S. Benn, to his firm and the firm is now known as Wiley & Schrack.

Mrs. JEANNE KAAS

JONES completed the bar examination and was admitted to practice on November 19. She is an associate in the law firm of Diamond, Polsky and Bauer, Philadelphia. A graduate of Temple University Law School, she had taught English at Camden High School, N.J. from 1963 to 1970.

Professor CHARLES M. SPRING has been appointed chairman of the Department of Philosophy and Religion at Colorado Women's College and has been elected to the Board of Directors of the American Academy of Religion.

1961

WILLIAM N. SMYTH is Assistant Headmaster and Head of the Upper School of the Far Hills Country Day School (N.J.). For the past 11 years he held a similar position at the Eastwood School, Long Island, N.Y. He is teaching eighth and ninth grade English as well as administering the Upper School grades of seven through nine.



Sylvia Rambo '58



Gordon B. Mowrer '59



W. James White '62

1962

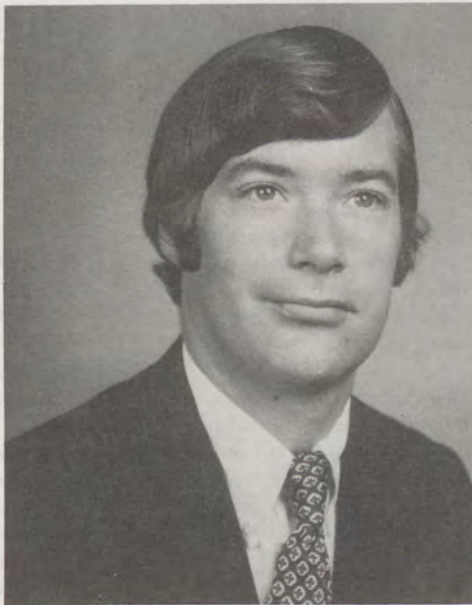
NEAL MILLER is Unit Director, Staffing and Policy Direction, Commission on Correctional Facilities and Services, American Bar Association. He is assisted by a five-person consulting panel with supporting staff and student research assistance.

Dr. CARL R. STEINDEL has become associated with Drs. Gryczko and Todaro in the practice of orthopedic and hand surgery, Scranton, Pa. Following a surgical internship at Robert Packer Hospital, Sayre, Pa., Dr. Steindel served a four year residency in orthopedic surgery at Thomas Jefferson University Hospital, and spent two years active duty with the Army as orthopedic surgeon at Kimbrough Army Hospital, Ft. Meade, Md. He is associated with Mercy Hospital, Community Medical Center, Moses Taylor Hospital and the Scranton State General Hospital. He resides with his wife and two children in Moscow, Pa.

Dr. JAMES A. STRITE,

JR., the first orthopedic surgeon in Adams County, has been admitted to practice in the Annie M. Warner Hospital, Gettysburg, Pa. Following graduation from the University of Pennsylvania Medical School, he served an internship at the York Hospital. After active service with the Navy, he began his residency in orthopedic surgery at George Washington Hospital, Washington, D.C., which was completed in July. Dr. Strite resides with his wife (BARBARA REAMY '61) and three children at 120 Rodes Avenue, Twin Oaks, Gettysburg, Pa.

Rev. W. JAMES WHITE, pastor of Bridgewater United Methodist Church, Somerville NJ, has been elected a trustee of Morristown College, Morristown N.J. He is feature editor of the United Methodist Relay, N.J. area newspaper, and currently chairs the N.J. Area Commission of Higher Education and Campus Ministries. He resides with his wife and four children at 619 Pennlyn Place, Somerville NJ 08876.



George W. Hemphill '64

1963

ROBERT L. KNUPP, Harrisburg, Pa., has been appointed a zone chairman of the Young Lawyers Section of the Pennsylvania Bar Association.

Dr. ALLAN B. WICKS, Denver, CO, recently passed his board examinations and is now a Diplomate in Internal Medicine. He is currently specializing in pulmonary diseases at the University of Colorado Medical Center and will enter practice in July.

1964

STUART LAMB has been made president and chief operating officer of Trimount Bituminous Products Company, Everett, Mass. Trimount is the manufacturer of bituminous concrete and the largest supplier in New England of liquid asphalt products. He resides in Marblehead, Mass. with his wife and two children.

GEORGE W. HEMPHILL, JR., has been appointed assistant vice president of the

Philadelphia National Bank. He had been serving as manager of PNB's Southampton office.

1965

BRUCE WALKER has been appointed instructor of Upper School social studies, Worcester Country Day School, Berlin, Md. He had been a history teacher at Stephen Decatur High School.

Dr. JOEL RENBAUM completed his residency in orthopedic surgery and is now in private practice in San Francisco. He resides with his wife and two daughters at 431 Countryview Drive, Mill Valley, Calif.

VICTOR C. DIEHM, JR., Hazleton, Pa., has been elected president and general manager of the Hazleton Broadcasting Co.

JOHN H. CHRONISTER, York, Pa., has been named public defender for York County. He had served as assistant public defender for the past three years.

Mr. and Mrs. Richard D. Gable (PATRICIA ANN MILLER) and their two children have moved to Dory Drive, Cape May Court House NJ 08210. Pat's husband is career and vocational guidance counselor, as well as varsity football coach, in Wildwood NJ.

RONALD M. FRIEDMAN is an associate in the law firm of White, Koch, Kelly and McCarthy and is manager of their Taos, New Mexico branch office.

1966

DANIEL SNYDER, Regional Administrator for the Third Region assigned to the U.S. Environmental Protection Agency, returned to the campus in November when he discussed "land use." He began

studies at the University of Virginia Law School and thereafter worked as a legal assistant to Senator Hugh Scott. On leaving that position, he began working in the Philadelphia office of the EPA.

THOMAS D. NEWBY is employed as an auditor with the U.S. General Accounting Office, Washington, DC. He resides with his wife and son at 8218 Brandon Drive, Millersville MD 21108.

Mrs. KATIE BROBERG FOEHL has been promoted to the newly created position of grants manager at Henry Ford Hospital. For the past year, she served as the hospital's public relations officer, and had previously been a science writer at the National Institute of Health. She and her husband reside at 32385 Mayfair, Birmingham MI 48009.

1967

Mrs. JANICE BURAK SCHWERT has been named the first full-time director of alumni affairs at North Adams State College. Following employment as a caseworker with the New York Department of Social Services, she was secretary to the director of the summer school at MIT and in a similar capacity for three years to the associate dean at Harvard University School of Government. She and her husband reside at R.F.D., Lime Hill Road, North Pownal VT.

It was incorrectly stated in the August issue of the *Alumnus* that MARGARET KAUFMAN is sponsoring editor of *Schaum's Outline of French Grammar*, McGraw-Hill. She is in the publishing hierarchy at Houghton Mifflin in Boston. Our apologies.

FREDRIC C. NELSON has been practicing law with Thelen, Marrin, Johnson & Bridges, 111 Sutter Street, San Francisco CA 94194, for the past 3½ years.

1968

KARL KUECHENMEISTER has been promoted to manager of daytime sales development at the CBS Television Network in New York.

WILLIAM F. MALETZ, Evanston, Ill., represented the College at the inauguration of Dr. Calvin E. Gross as the fifth president of National College of Education, Evanston, in October.

STANLEY GRZYB was awarded the doctor of medicine degree from the University of Connecticut and is serving a year of internship at Deaconess Hospital, Spokane, Washington, followed by two years in the Public Health Service. Because of his work on a health project sponsored by the University of Colorado Medical Center delivering care to migrant farm workers and also as a research fellow at the University of California Trauma Center, he has received an invitation to speak at the annual scientific session of the American College of Surgeons in Chicago. His address is 731 S. Lincoln Place, Apt. 2, Spokane, WA. 99204.

Col. ROBERT M. ALLMAN is director of the department of radiology at the USAF Hospital, Weisbaden. His address is Box 637, APO New York 09220.

CHERYL ANN WHEELER has become an associate of the law firm of Margaret Bates Ellison, Lincoln Center, Denver CO 80203.

JOSEPH W. MOYER was recently admitted to practice as an attorney in the courts of York County, and is associated with the law firm of Stetler and Gribbin, 138 East Market Street, York PA.

1969

THOMAS W. DECKER

has been named an assistant dean at Denison University. He had previously served as a counselor in the Virginia Department of Vocational Rehabilitation.

Mr. and Mrs. George Henderson (LINDA DALRYMPLE) have moved to 4100 Greenbriar, Apt. 132, Houston, Tex. 77006. They spent the summer abroad on doctoral research.

GREGORY V. SMITH is assistant district attorney for Lycoming County. The past year he has been a law clerk for president Judge CHARLES F. GREEVY '35. He resides with his wife and two sons at 326 Union Avenue, Williamsport, PA.

NICHOLAS G. CEPPI has opened his own promotion and marketing agency in Danbury Ct. He received his masters in business administration from the University of Virginia. He resides with his wife and son at 893 New Norwalk Road, New Canaan CT 06840.

In October, the Rev. H. CARL SHANK was ordained to be co-pastor of the 16-member Reformed Baptist Church, Wilmington DE. The church began as a home Bible study group about two years ago, formed from a nucleus of families from the area who attended Faith Reformed Baptist Church in Media PA. He will supplement the teaching, preaching and counseling ministries of the Church and has been named director of the Reformed Publications Society.

Mr. and Mrs. Linton L. Moyer (CAROL LORAH) and two children are residing at 3407 Cambridge Road, Durham NC 27707, where her husband is completing his second year at Duke University Law School.

1969

CAROLE U. MARKS received her master of architecture degree from the University of Pennsylvania in August and is now working as an architect on a design for a housing project for the aging for the Bourneville Village Trust. She is living at Woodbrooke College, 1046 Bristol Road, Birmingham, England.

JAMES R. HANLIN has been appointed assistant director of continuing education at the Community College of Allegheny County in Pittsburgh PA. He resides with his wife at 136 Hilands Place, Pittsburgh 15237.

CYRUS DOLBIN has been admitted to practice before the Supreme Court of Pennsylvania and the Schuylkill County Courts. He is serving as assistant district attorney in the county courts and shares offices with his father at 501 West Market Street, Pottsville PA.

ROBERT S. WINDSOR was recently elected president of the Student Association at the Business School of Cornell University where he is studying for his MBA. He and his wife (KATHY WASILEWSKI) are living at 210 North Quarry Street, Ithaca NY 14840.

RUDY L. SLINGERLAND, Troy, PA., received a master's degree in geology from Pennsylvania State University in December.

1970

MARK K. NICHOLS received the Master of Arts degree in international affairs from the Fletcher School of Law and Diplomacy in 1971. Upon completion of his thesis, "The Role of Italy in Mediterranean Security," he received



Janice B. Schwert '67



Mark K. Nichols '70

the degree of Master of Arts in Law and Diplomacy in 1973. While at Fletcher he served as chairman of the Student Fund Raising Committee which contributed over \$10,000 to the Fletcher School to repair damage caused by an arsonist. He is with the International Division of the Bank of America in San Francisco, where he hopes to pursue a career in international finance. His new address is 550 Battery St., Apt. 1206, San Francisco, CA. 94111.

W. RICHARD BOOTH received the Juris Doctor degree from Duquesne University School of Law and has been admitted to the Pennsylvania Bar. He is associated with the law firm of Lawrence Plum and Lawrence, 410 Oliver Building, Pittsburgh, PA. 15222.

ROBERT P. CORBIN, Glen Mills Pa., received the first prize in the 1973 Nathan Burkan Memorial Competition at Cornell Law School. The title of his winning essay was "Problems in the Creation of a Uniform Commercial

Code Article Nine Security Interest in Statutory Copyrights." A graduate of Cornell Law School, he is a student in the Basic Class, The Judge Advocate General's School, Charlottesville, VA.

MICHAEL F. MYCHAK, law clerk to Northumberland County Judges MICHAEL KIVKO '25 and FRANK S. MOSER '32, has passed the state bar examination which qualifies him for admission to practice before the Supreme Court of Pennsylvania and the Northumberland County Court.

THOMAS A. WAL-LITSCH has been admitted to the Lehigh County Bar Association. He is associated with the law firm of Snyder, Doll & Schantz, Bethlehem PA.

THOMAS G. RIGLING II, CPA has been admitted as a partner to McKonly & Company, certified public accountants, with offices in Lemoyne and Harrisburg PA.

JULIA M. BURKEE has passed the Pennsylvania Bar examination and has accepted a position in the legal depart-

ment of Mellon National Bank, Pittsburgh PA. A graduate of Duquesne Law School, she has been admitted to the Allegheny County Bar Association.

GREGORY VAN DOREN, a graduate of Duquesne Law School, has been accepted into the U.S. Army JAG Corps and is currently attending MP school at Fort Gordon, GA. Following temporary duty at the University of Virginia, he will be permanently assigned in March to the Judiciary Department in Falls Church VA., which is the seat of the Court of Review and the U.S. Military Court of Appeals, where he will begin work as a trial attorney.

EDWARD L. SCHORPP has become an associate in the law firm of Landis and Black, 36 South Hanover Street, Carlisle PA 17013.

1971

PAUL M. LEVIT has entered the MBA program at the George Washington University, where his area of concen-

tration is international business. His address is 4600 South Four Mile Run Drive, Apt. 304, Arlington, Va. 22204.

JAMES M. LANDIS has been granted a full tuition scholarship to Johns Hopkins University School of Hygiene and Public Health to study for a master's degree in health science and mental health. The scholarship was granted by the Department of Health, Education and Welfare to a small group of students taking a unique program in executive training in alcoholism services. For the past two years he has been working as a psychiatric technician, Washington Adventist Hospital, Takoma Park, Md.

DAVID HIRSHEY, a reporter for the *Daily News*, recently covered Hank Aaron's stirring homerun chase in Atlanta, GA. He also covered the epic battle of the Sexes between Bobby Riggs and Billie Jean King which was syndicated around the country and was cited for "excellence under deadline pressure" by a reporter on NBC-TV. He has been elected vice president of the Metropolitan Basketball Writers Association. His wife (GERRI KUKUC '72) will receive her master's in sociology from the New School for Social Research in the spring.

1972

ELEANORE K. HODGES, Baltimore, Md., received her masters in classics from Pennsylvania State University in August.

KATHY DUNN received the M.S.L.S. degree from the University of North Carolina and is now the Young Adult

Librarian at the Augusta-Richmond County Public Library. Her address is 707 Maxwell House Apartments, 1002 Green St., Augusta, GA. 30901.

LEIGH WACHTER has been named director of the Carlisle Youth Service Center, with headquarters at 114 North Hanover St. He had been serving as assistant director.

H. ALAN VICAN is a social studies teacher at Big Spring High School, Newville, PA., where he will also serve as an assistant basketball coach. He previously taught at the Stratford Academy.

1973

CHARLES H. JACOBS has received a graduate fellowship to study at Union Theological

Seminary in New York City in the Master of Divinity program. His address is Hastings Hall 723, Union Theological Seminary, 600 West 122nd St., New York, N.Y. 10027.

2/Lt. PAUL V. KIEHL, JR. has completed with honors an 8-week Medical Service Corps Officer Basic Course at the Academy of Health Sciences, U.S. Army, Ft. Sam Houston, Tx.

JUDITH A. LABARRE is an assistant editor of *Food Engineering* published by the Chilton Co. Her address is William Henry Apt., Buch Building, Apt. 226, King and Frazier Road, Malvern PA 19355.

RICHARD W. PURNELL is attending Thunderbird Graduate School of International Management, Glendale AZ.

Obituaries

1905 KENT C. NICODEMUS, SR., Walkersville, MD., died at his home on September 17 at the age of 91 years. He was co-founder and president of the Glade Valley Milling Co., president of the Glade Valley Bakery, Walkersville; a director of the Farmers and Mechanics Bank, Frederick; former president of the Walkersville Bank and since

the merger was chairman of the advisory board. He had formerly served as burgess of Walkersville, president of the Walkersville Water Company and former president of the Mt. Airy Milling Company. He was a member of Sigma Alpha Epsilon fraternity and the Walkersville United Methodist Church and Baltimore Chamber of Commerce. He is survived by his wife, a son, a daughter, three grandchildren, two sisters and one brother.

1905 EARL M. ROUSH, former attorney of Sunbury, Pa., died in the fall at the age of 93 years. A 1907 graduate of the Dickinson School of Law, he practiced until his retirement in 1960 and was the oldest living member of the Northumberland County Bar Association. A life member of the General Alumni Association, he was a member of

Sigma Alpha Epsilon fraternity.

1905 Mrs. JESSIE ETHEL RUDISILL MITCHELL died in Boston, MA., on November 16.

1906 EDWARD E. BOHNER, Stuart, Fla., died at his home on October 24 at the age of 92 years. A former Pennsylvanian, he had lived in Springfield, Mass. before moving to Florida 16 years ago. He was actually in the first wave of the Peace Corps in 1908 when he headed the Edward A. Steiner Immigrant Expedition to Europe. From 1914 to 1925 he was engaged in training specially selected teachers from the public schools in methods to be used when teaching English and citizenship to adult immigrants. In 1960 he retired as a special agent with the Group Department of Equitable Life Assurance Society after 40 years service. A member of Phi Kappa Psi fraternity, he was a Mason, and held membership in the First United Presbyterian Church and the Kiwanis Club, and was in charge of Associated Industries of Massachusetts and Rhode Island. He is survived by his widow, three sons, a daughter, 11 grandchildren and six great-grandchildren.

1907 Mrs. CORINNE SHEPLER, widow of Dr. Norman B. Shepler, died September 26 at her home in Mechanicsburg, Pa., at the age of 89 years. She was a member of Grace United Methodist Church, Harrisburg; Pi Beta Phi Sorority and a life member of the General Alumni Association. She is survived by a daughter, a brother and three grandchildren.

1907 Mrs. MARY HOOVER STEESE, Carlisle, Pa., died at the Forest Park Nursing Home on October 30 at the age of 88 years. She was the widow of CHARLES M. STEESE '07. She was a member of Pi Beta Phi sorority. She is survived by three daughters, six grandchildren and a great-grandchild.

1914 The Alumni Office recently learned of the death of J. ROY JACKSON, Beaver, PA.

1914 MARGUERITE ENGLISH, Haddonfield, N.J., on November 15.

1918 The Alumni Office recently learned of the death of LILLIAN KELL, Dauphin, Pa. A Phi Beta Kappa graduate, she was a retired school teacher.

It was incorrectly stated in the October issue of the *Dickinson Alumnus* that CLARENCE DUMM '05 was survived by two sisters, BLANCHE '10 and MIRIAM D. FREY '13. These two alumnae are cousins.

1918 The Alumni Office recently learned of the death of EDISON MATHIS, Ventnor, N.J., on September 5. He was a member of Sigma Chi fraternity and a retired automobile dealer. In addition to his wife, he is survived by three sons.

1919 Dr. IRA SHUTE PIMM, former headmaster of The Pennington School, died on October 21 after a lingering illness at the age of 77 years. A graduate of Drew University School of Theology, the College honored him with a doctor of divinity degree in 1949. A life member of the General Alumni Association, he was a member of Phi Kappa Psi fraternity. He began his ministry at Chapel Heights and New Sharon, and then went on to pastorates at Atlantic City, Oceanport, Red Bank, Berlin, Camden, Asbury, Palmyra, Millville, Princeton and Long Branch. In 1946 he was appointed superintendent of the former Trenton District, and in 1951 became headmaster of The Pennington School, where he served until 1958. He then

became pastor of First Church, New Brunswick retiring from there in 1962. Dr. Pimm served as associate pastor of First Church, Ocean City from 1964 to 1968. Surviving are his wife; two sons, IRA, JR. '49 and Donald, and a brother.

1920 GEORGE H. BURKE, Silver Spring Md., died on August 2 after a long illness. He was a life member of the General Alumni Association and a member of Theta Chi fraternity. In 1960 he retired from Federal government service after 23 years service as an auditor. He had previously taught in the Maryland Public Schools and Omega Military Academy. He is survived by his wife.

1920 Rev. ALLEN B. L. FISHER, Baltimore, Md., died on October 2 in the Maryland General Hospital after a short illness at the age of 77 years. While a student at Drew Theological Seminary, he began his ministry in Rockaway Valley, N.J. Returning to Baltimore, he joined the Baltimore Annual Conference of the United

Methodist Church and served churches in Baltimore, Ellicott City, Halethorpe, Cumberland and the Washington area. At the time of his retirement from the active ministry in 1963, Rev. Fisher was serving Brookland Church in Washington. He then began making visits to the sick for Brookland and the Catonsville Churches. He was a member of Tuscan Lodge, F & AM. He is survived by his wife and a son.

1920 A. HARLAND GREENE, Finksburg, Md., died at his home on October 9 after a long illness at the age of 83 years. He was a veteran of World War I. A member of Theta Chi fraternity, he was a Phi Beta Kappa graduate. He continued his education at Columbia University and the University of Pennsylvania. He taught in the Carroll County Schools and at the Cararet Academy, East Orange, N.J. His last assignment prior to retiring in 1945 was at McDonogh School, where he served for 15 years. He is survived by his wife and a son.

1920 The Alumni Office recently received word of the death of YALE STOCKWELL, Sarasota, Fla., on September 20. He was a member of Kappa Sigma fraternity.

1921 JOHN F. MORGENTHAUER, Harrisburg, Pa., died on October 27 at the Harrisburg Hospital. Following his retirement as a state employe, he was associated with A. J. Lehrman and Son. He was a member and former first reader of the First Church of Christ Scientist, Euclid Lodge F & AM, Harrisburg Consistory, Zembo Temple and Zembo Luncheon Club. A life member of the General Alumni Association, he was a member of Phi Delta Theta fraternity and maintained an ac-

tive interest in the affairs of the College. He is survived by his wife and a brother. Two other brothers Theodore and WENDELL '25 died in September.

1923 Mrs. MARY LINE TODD, widow of GLENN E. TODD '12 a former Trustee of the College, died on September 23 in the Carlisle Hospital. A life member of the General Alumni Association, she was a member of Chi Omega sorority. She was a former school-teacher and for several years ran the Chocolate Shop. From 1948 until her retirement in 1954, she was in the charge of the College Bookstore which was located in the Alumni Gymnasium basement. She held membership in the Musical Arts Club, the First United Church of Christ, the Civic Club, the Mary Dickinson Club, AAUW, DAR and the Carlisle Hospital Auxiliary.

1924 Dr. WILLIAM O. KENWORTHY, physician in Atglen, Pa., died on September 1. A member of Kappa Sigma fraternity, he was a graduate of Jefferson Medical College and was a member of the Chester County Medical Society. He is survived by his wife.

1924 BRINLEY R. SAYES, husband of LOUISE FINCH SAYES '21, died in Wilkes Barre PA on November 1 at the age of 73 years. A member of Kappa Sigma fraternity, he held membership in St. Clements Episcopal Church, Masonic Lodges, and the American Legion. While in college he was a letterman in football and baseball. He was a navy veteran of World War I. In addition to his wife, he is survived by two daughters, Mrs. SUSAN SAYES MCGHEE '48, and Mrs. MARGARET SAYES VAN ZANDT '52, and six grandchildren.

Oldest Alumnus Dies

John D. Stoops '94, professor emeritus of philosophy at Grinnell College, Iowa, died November 18. At age 100, Dr. Stoops was the College's oldest alumnus at the time of his death.

One of the last survivors of the lecturer-philosopher William James, Dr. Stoops received his M.A. from Harvard and his Ph.D. from Boston University. He authored three philosophical works and numerous articles. He received an honorary doctor of laws degree from Grinnell in 1945 and served as president of the western division of the American Philosophical Society.

Rose Eddie, his wife, survives him.

Pastor Dies

Rev. Dr. Lester Welliver '18, past president of Westminster Theological Seminary and a trustee of the College, died November 13 in Bethesda, Maryland. The one-time superintendent of the Harrisburg and Williamsport Pennsylvania districts of the Methodist Church was 77.

Dr. Welliver was ordained in 1922 after graduating from Drew Theological Seminary. He served the Harrisburg and Williamsport pastorates until 1943, when he assumed the presidency of Westminster Theological, a position which he held until 1955. In 1940 he received an honorary doctor of divinity from the College; he served as a trustee since 1959.

Surviving Dr. Welliver are his wife, Eleanor Yeaworth '20; five sons, the Rev. L. Allyn '48, Dr. Glenn E. '55, Dr. Daniel L., Rev. Kenneth B. and Dr. Paul W., and a brother and 17 grandchildren.

1924 Mrs. ZADA BRANSTETTER KNICKERBOCKER died at her home in Arlington, VA. on October 20.

1925 WENDELL P. C. MORGENTHALER, brother of the late JOHN D. MORGENTHALER '21, Harrisburg, Pa., died on September 8 in Tokyo, Japan, while on a West Shore Chamber of Commerce tour. A member of Phi Delta Theta fraternity, he was a retired employe of the Albert Allen Company. He was a member of Euclid Lodge F & AM, Harrisburg Consistory, Zembo Temple and the Steelton Coin Club. He was a past president of the Navy League and the Young Democrats of Pennsylvania and a former treasurer of the Dauphin County Democratic Committee. He was also a member of the First Church of Christ Scientist. He is survived by a daughter, a son, a brother and seven grandchildren.

1927 The Alumni Office recently learned of the death of Dr. BLANCHARD V. ANTES, Canton, Ohio.

1929 The Rev. Dr. LYNN H. CORSON, a Methodist minister for 40 years, died at his home in Cape May Court House, N.J. on December 11 at the age of 65 years. Retiring from full time pastoral duties in the California-Arizona Conference of the United Methodist Church four years ago, he had served for the last three years as supply pastor of the North Wildwood, N.J. Methodist Church. He had served pastorates at Hopewell, Pemberton, Trenton, Keyport, Princeton and Haddonfield. After his Haddonfield assignment he served in Seattle, WA and Long Beach CA. A graduate of Drew Theological Seminary, he received an honorary doctor of divinity degree from American University. He was a member of Phi Kappa Psi fraternity. Surviving are his wife,

two sons, three daughters, 15 grandchildren, his mother, two brothers and four sisters.

1933 The Rev. Dr. JOHN H. BARNES, retired pastor of Old St. George's United Methodist Church, Philadelphia, died on November 24 at Cornwall Manor, PA at the age of 63 years. He was a member of Kappa Sigma fraternity. Dr. Barnes was a member of the Pennsylvania Annual Conference, the Union League Club and Rotary. He is survived by his wife, two daughters and five grandchildren.

1936 Mrs. C. ELIZABETH STUART EINSTEIN, sister of WILLIAM STUART '32 and HARVEY STUART '34, died at her home in Kennett Square, Pa., on November 2 at the age of 59 years. A life member of the General Alumni Association, she was a member of Chi Omega sorority, the Kennett Square Presbyterian Church, the Seedlings Garden Club and the Race Street Park Committee. She is survived by her

husband, three sons, three brothers and two grandsons.

1939 Mrs. ELOISE SIMONS PEDUZZI, wife of EDWARD F. PEDUZZI, Ebensburg, Pa., died on October 16 at the age of 56 years. In addition to her husband, she is survived by two sons.

1948 The Alumni Office recently received word of the death of WILLIAM GEORGE, an assistant district attorney of Reading, Pa. He was a 1950 graduate of the Dickinson School of Law.

1969 PAMELA A. MATTIX, Potomac, Md., died on October 14 in Naivasha, Kenya of injuries suffered in an automobile accident. At the time of the accident she was working for the Brised-Manning Travel Agency in New York City and was on a year's tour of Africa. She is survived by her parents, Mr. and Mrs. Paul R. Mattix, Jr., a brother, her paternal grandparents and her maternal grandmother.

Stroke Claims Trustee

An alumnus and long-time trustee of the College, Dr. Joel Claster '14, died on Saturday, December 8, the victim of a stroke. Dr. Claster, who had served on the Board of Trustees for twenty years, was 82.

He earned a law degree from the Dickinson School of Law and practiced law for several years before joining Luria Brothers, scrap dealers, more than 50 years ago. He served in both World War I and II in the Army, attaining the rank of Colonel.

Dr. Claster was associated with many concerns, including the Allied Jewish Appeal and the Albert Einstein Medical Center. Dickinson awarded him an honorary degree in commercial science in 1949.

Dr. Claster is survived by his wife, Dora; a daughter Mrs. Marjorie Schwadron; two sons Stanley and Robert '26, a brother and nine grandchildren.

The General Alumni Association

President
Walter E. Beach '56

Vice President
Ronald Goldberg '54

Secretary
Mary G. Specht '57

Treasurer
George Shuman, Jr. '37

Alumni Secretary
George F. Stehley '62

ALUMNI TRUSTEES

John D. Hopper, Esq. '48
107 North Front Street
Harrisburg 17101

Vincent J. Schafmeister, Jr. '49
Institute for Medical Education and Research
Geisinger Medical Center
Danville 17821

Samuel J. McCartney, Jr., Esq. '41
2775 N.E. Expressway Access Road, Apt. A-1
Atlanta, Georgia 30345

Mrs. Marion Darragh Faucett '32
R.D. #2, Box 538
East Stroudsburg 18301

ALUMNI COUNCIL

Term expires in 1974

Paul D. Olejar '28
6645 West Port Malabar Boulevard
Palm Bay, Fla. 32905

John C. Arndt '31
1469 Jericho Road
Abington 19001

Arthur R. Mangan '37
106 Linden Drive
Camp Hill 17011

Dr. William Tyson '49
Bradshaw Road and Silver Spruce Terrace
Kingsville, Maryland 21087

G. Kenneth Bishop '51
624 South Hanover Street
Carlisle 17013

Dr. George M. Gill '54
2 Ridge Terrace
Short Hills, N.J. 07078

Walter E. Beach '56
5719 Chevy Chase Parkway, N.W.
Washington, D.C. 20015

Mrs. Mary G. Specht '57
135 Conway Street
Carlisle 17013

Robert B. Jefferson '68
7 MacArthur Boulevard, (Apt. 311-N)
Westmont, N.J. 08108

Joseph A. Layman, Jr. '71
145 South Pitt Street
Carlisle 17013

Term expires in 1975

Dr. G. Wesley Pedlow '34
30 Hemlock Drive
Sunset Pines, Lock Haven 17745

Horace L. Jacobs III '43
215 East Maxwell Street
Lakeland, Florida 33803

Mrs. Christine M. Crist '46
1915 Walnut Street
Camp Hill 17011

Bruce R. Rehr '50
92 Grand View Boulevard
Wyomissing Hills 19609

Dr. Ronald Goldberg '54
42 Spring Mill Lane
Cherry Hill, N.J. 08034

Thomas DeMarino, Esq. '59
1200 East Tufts
Englewood, Colorado 80110

Mrs. Ann Lemkau Houpt '59
2 Watchung Place
Summit, New Jersey 07901

Raymond L. Hamill '72
2129 Woodlawn Avenue
Glenside 19038

Dr. Kermit B. Gosnell '62
133 South 36th Street, Suite 104
Philadelphia 19104

Walter M. Fish '54
18 Berkshire Drive
Strafford, Wayne 19087

Term expires in 1976

Paul R. Walker '21
110 Schuyler Hall
Harrisburg 17104

Dr. R. Edward Steele '35
92 Tuscarora Street
Harrisburg 17104

Dr. Paul V. Kiehl '36
1330 Armstrong Road
Bethlehem 18107

Dr. John H. Harris, Jr. '48
224 Parker Street
Carlisle 17013

Mrs. Charley P. Rhoads '60
R.D. #3
Mechanicsburg 17055

Mrs. Carol L. Young '63
159 Westover Drive
Delran, New Jersey 08075

Samuel W. Witwer, Jr., Esq. '63
300 North State Street, Apt. 5126
Chicago, Ill 60610

Victor C. Diehm, Jr. '65
27 Twain Circle, Brookhill
Conyngham 18219

Gilpin Fegley '73
2326 Spring Street
West Lawn 19609

Desmond W. Streete '73
115 Juniperhill Road
White Plains, N.Y. 10607

Life Membership: A Life Membership in the General Alumni Association is available at \$25. Gifts are tax-deductible and are used to support *The Dickinson Alumnus*. Send Check to the Alumni Office, Dickinson College, Carlisle, Pa. 17013.

Dickinson Alumni Clubs

Information on Dickinson Alumni Clubs, which are located in many areas across the country, may be obtained by writing to the Alumni Secretary, Dickinson College, Carlisle, Pennsylvania 17013.

