

DICKINSON

Magazine



In this Issue:
THE ROOF GOES ON
A LOOK AT THE EDUCATIONAL
SERVICES DIVISION

FEBRUARY 1980

U.S. POSTAL SERVICE
STATEMENT OF OWNERSHIP, MANAGEMENT AND CIRCULATION
(Required by 39 U.S.C. 3685)

1. TITLE OF PUBLICATION The Dickinson Magazine		2. ISSUE DATE 11, 12, 1, 6, 12	3. ISSUE PERIOD 9-20-79
4. FREQUENCY OF ISSUE November, February, May, August		5. NUMBER OF ISSUES PUBLISHED ANNUALLY 3	6. ANNUAL PUBLICATION DATE 9/20
7. LOCATION OF HEADQUARTERS OR GENERAL BUSINESS OFFICES OF THE PUBLISHER (Not printer) Dickinson College, Carlisle PA 17013			
8. NAMES AND COMPLETE ADDRESSES OF PUBLISHER, EDITOR, AND MANAGING EDITOR Dickinson College, Carlisle PA 17013 Henry L. Winkelman, Dickinson College, Carlisle PA 17013			
9. OWNER (If owned by a corporation, its name and address must be stated and also immediately thereunder the names and addresses of stockholders owning or holding 1 percent or more of total amount of stock. If not owned by a corporation, the names and addresses of the individual owners must be given. If owned by a partnership or other unincorporated firm, its name and address, as well as that of each individual must be given.)			
10. BOARD OF TRUSTEES, Dickinson College, Carlisle PA 17013			
11. KINDS OF BONDS, MORTGAGES, AND OTHER SECURITIES HELD BY OWNERS OR HOLDING COMPANIES (If none, check box) _____			
12. FOR COMPLETION BY NONPROFIT ORGANIZATIONS AUTHORIZED TO MAIL AT SPECIAL RATE (See 39 U.S.C. 3686) The purpose, function, and nonprofit status of this organization and the exempt status for Federal income tax purposes: _____			
13. HAVE NEW CHANGES DURING PREVIOUS 12 MONTHS (If changed, publisher must submit explanation of change with this statement) <input checked="" type="checkbox"/> YES <input type="checkbox"/> NO			
14. EXTENT AND NATURE OF CIRCULATION		15. AVERAGE NO. COPIES EACH ISSUE DURING PREVIOUS 12 MONTHS	16. TOTAL NO. COPIES OF SINGLE ISSUES PUBLISHED DURING PREVIOUS 12 MONTHS
A. TOTAL NO. COPIES PRINTED (Net Press Run)		16,500	17,850
B. PAID CIRCULATION 1. SALES THROUGH DEALERS AND CARRIERS, STREET VENDORS AND COUNTER SALES			
C. MAIL SUBSCRIPTIONS			
D. TOTAL PAID CIRCULATION (Sum of B and C)			
E. FREE DISTRIBUTION BY MAIL, LARGELY OR SOLELY BY MAIL, CARRIER DELIVERY, AND OTHER FREE SERVICE		16,000	17,100
F. TOTAL DISTRIBUTION (Sum of D and E)		16,000	17,100
G. COPIES NOT DISTRIBUTED 1. OFFICE USE, LEFT-OVERS, UNADVERTISED, SPOILED, RETURNED MAIL, ETC.		500	750
H. RETURNS FROM NEWS AGENTS			
I. TOTAL (Sum of D, F and G) should equal net press run shown in 14.		16,500	17,850
17. SIGNATURE AND TITLE OF EDITOR, PUBLISHER, BUSINESS MANAGER, OWNER, OR OWNER		SIGNATURE AND TITLE OF EDITOR, PUBLISHER, BUSINESS MANAGER, OWNER, OR OWNER	
18. FOR COMPLETION BY PUBLISHERS MAILING AT THE REGULAR RATE (Section 39 U.S.C. 3686) (Not to be checked)		19. FOR COMPLETION BY PUBLISHERS MAILING AT THE REGULAR RATE (Section 39 U.S.C. 3686) (Not to be checked)	

U.S. POSTAL SERVICE FORM 3526 (Rev. 1-79)

The
DICKINSON COLLEGE
Magazine

Volume 57

Number 1

February, 1980



2 The Living/Learning Environment

A dean explains his division's goals.

6 Self-Created Stress

We are the cause of our stress, a student writes.

7 Alcohol—The Drug of Choice

The counseling center has a new program.

8 The College

Short items about appointments, curriculums, promotions, students.

Former Student Dedicates a Book

Redskins Cap the Fun, Alec Sirken

The Roof Goes On

12 Personal Mention

Engagements, marriages, births, deaths, activities.

THE WEATHERVANE

We are at the end of one era and the beginning of another. The final basketball game in Alumni Gymnasium is February 16. In the fall, Dickinson's basketball team will start a new season in a new gym in a brand new building, the Life/Sports Learning Center.

The Life/Sports Learning Center will be the third "new" gym in the College's history. The first, built for \$7513.28, is known to most pre-'55 classes as the Old Gymnasium on West Louther Street. Erected in 1885 and financed with gifts from Clemuel Ricketts Woodin and William Clare Allison, the building was dedicated on January 6, 1888.

Forty-one years later, on January 9, 1929, Alumni Gymnasium, built on the site of old South College, was dedicated. It was so named because the General Alumni Association raised most of the money for it.

After Alumni Gymnasium was opened, Old Gym was renovated and became a recreational and banquet hall. A severe summer thunderstorm in May, 1953, collapsed the west wall of the old gym and most of the building was razed, leaving only the College's central heating plant which had been established in the basement.

Currently the College is studying what it will do with Alumni Gym when the new, new gym is opened next fall. A decision will be forthcoming in about a year.

In our hectic world of today's and tomorrow's, it is therapeutic to pause and consider the past, for there one can find the thread of the future. This use of the past to help define the future is what, among other things, makes Dickinson College so special.

John Ross

Picture credit: Pictures of the roof being put on the Life/Sports Learning Center are by Jim Bradley, *The Patriot News*, Harrisburg. The aerial view showing the center's relationship to Biddle Field is by John Ross, Dickinson College.

© Copyright Dickinson College 1980

Dickinson College does not discriminate against applicants and students on the basis of race, religion, sex, color, handicap, and national or ethnic origin.

The *Dickinson Magazine* (156620) is published by Dickinson College, Carlisle, Pa. 17013 each August, November, February and May. Second Class postage is paid at Carlisle 17013. Postmaster: Send address changes to Dickinson College Magazine, Dickinson College, Carlisle, PA 17013. Nancy Lee Winkelman, editor • George F. Stehley '62, alumni secretary • Jeanne L. Hockley, department editor.

The Living/Learning Environment

Leonard S. Goldberg

- A freshman woman seeks a roommate change because her roommate is "from a different culture" and the two just can't seem to get along.
- A freshman male, experiencing severe depression upon being separated from family and friends for the first time, threatens suicide.
- A sophomore woman is distressed that her parents' business has gone bankrupt, and she doesn't have the necessary financial resources to complete her education.
- A junior woman student must be notified of the unexpected death of a parent.
- A junior man is drinking heavily and frequently; his friends see a problem but don't know what to do.
- A senior man has no idea of what he is going to do after graduation.
- Throughout the campus, there is a widespread feeling that it is necessary to improve the "quality of life."

The above situations are brief examples of the broad array of problems and challenges to which the Division of Educational Services must respond. Division personnel have begun to implement many programs and services which support the educational mission of the College. Among the ideas presently being developed and expanded are:

- the integration of academic advising for freshmen and sophomores;
- re-defining the living environment as also being a learning environment;
- career advising which illuminates the relationship between college activities and careers;
- programmatic efforts to reduce alcohol and other substance abuses;
- investigating sports activity and other health factors as they affect the student's academic life.

The Educational Services Division

was created in 1973 to provide students with a host of personal and educational support services designed to maximize the student's educational experience. The feeling at Dickinson College is that as a residential, liberal arts institution, education is a 24-hour per day proposition. Informal interactions in the residence halls, the dining hall, club activities and meetings, and in intramural, intercollegiate, and club sports—all contribute to the student's overall educational experience and social development.

Organized around a broad educational model which views all dimensions of student life as interrelated, the following areas comprise "Educational Services" at Dickinson:

Student Housing (coordination of on-campus housing, fraternity liaison, resident adviser program, etc.)

Counseling (e.g. personal, social and career counseling, job placement services, etc.)

Financial Aid (administration of college, federal, and state grants, loans and employment)

Student Services (e.g. coordination of faculty adviser program, cultural events, all student clubs and activities, special programs, foreign students, sororities, Public Affairs Symposium, etc.)

Health Services (e.g. on-campus health center, physician services, hospital liaison)

Chaplain's Office (e.g. religious, personal, ethical explorations and counseling services)

Athletics (including intercollegiate, intramural, and recreational programs)

In essence, then, most of the out-of-classroom environment falls under the domain of Educational Services.

While a significant part of the staff's time is spent in crisis intervention, much effort is also spent in developing educa-

tional programs designed to enhance the student's co-curricular experience. Just as the student must be seen as a complex, multi-faceted individual, so also the support system needs to be viewed as an integrated and coordinated unit.

As an example, the housing, counseling, and chaplain's offices work together in preparing and supporting resident advisers. The "R.A.'s" are selected upper-class men and women who are trained to serve as peer counselors. While many of their duties are administrative, the *raison d'être* of the R.A. position is to serve as warm, empathic, knowledgeable, and competently trained resource persons living in the residence halls. Thus when a crisis arises, someone is close at hand either to provide assistance directly or to make an appropriate referral.

But why the term "Educational Services?" At Dickinson, an attempt is made to communicate an educative and holistic approach to dealing with areas of student life which is broader and more integral than the *in loco parentis* philosophy found in more traditional student personnel programs.

In 1972, a far-reaching student life study committee was formed by President Howard L. Rubendall. The "charge" of this committee was to study the area of student life to determine whether or not Dickinson College ought to continue supporting a professional staff and program aimed at integrating the co-curricular program with the College's academic program. During extensive deliberations the committee considered the implications of lessening the College's commitment to the co-curricular area.

However, as their study proceeded, committee members raised a host of serious questions pertaining to the uniqueness of a residential liberal arts program. In the words of the committee itself, ". . . The committee discovered the need for reforms of structure so that ap-

Education is a 24-hour-per-day proposition.

appropriate leadership and coordination may be exerted in the direction of greater integration of high quality academic with healthy extracurricular aspects of College life." (page 4, Report to the President from the Ad Hoc Committee for Student Personnel Services, November 10, 1972)

The committee report was received and evaluated by the faculty and the administration, and a new, strengthened commitment to the student life area was pledged in an effort to integrate the co-curricular and the academic programs.

An example of this integration can be seen in the faculty adviser (F.A.) program where each freshman floor is assigned a faculty member who serves with the student R.A. as part of a support team within the residence hall. Both the R.A.'s and F.A.'s return to campus early in the fall for their own orientation program designed to prepare them to be better advisers. The registrar, college counselors, and various academic and administrative deans work cooperatively to cross traditional boundaries and offer an effective, well-rounded training program for the R.A.'s and F.A.'s.

Activities or functions of the Educational Services Division may be described as preventive, developmental, and educational. The student is looked upon as a complex being who cannot be arbitrarily divided into an "academic" component and one that is "non-academic."

Perhaps another way of stating this is that as a residential, liberal arts institution, the student's entire academic, social, and cultural milieu serves as an educational environment. Residence halls in a real sense become social laboratories where students learn about themselves in relation to others, where personal values and long-held assumptions may be challenged. Too, the dining hall, club activities and meetings, intramural, varsity or club sports—all contribute to the student's total educational experience.

As can be seen, there is much growth and ongoing development at Dickinson. Yet we still have our share of challenges ahead:

- More extensive examination of the relationship between the out-of-class living environment and the formal learning process is needed.
- Fraternities which dominate the social scene have not maximized their potential for enhancing the College's educational mission.
- Interactions between men and women are frequently strained with misunderstandings based on sex role stereotypes.
- Our "cloistered" environment too often shields students from the realities of the outside world.
- Integration of sports and liberal arts learning is in its infancy; exciting new directions are possible with the development of our Life/Sports Learning Center.

The list could go on, but the point is that we need to examine a range of student life activities and experiences beyond the classroom in order to determine the most effective climate for the living and learning of our students during their brief period of studies with us.

By the time this article appears in print, the formation of a major Task Force on Student Life will have been announced by President Sam A. Banks to help us formulate better, deeper approaches to the above issues and similar queries. The dialogue has only begun!



LEONARD S. GOLDBERG is dean of educational services. A graduate of SUNY at Oswego, he received the M.A. and Ph.D. degrees at Ohio State University. Dean Goldberg came to Dickinson in 1977.

It Takes A Lot of Talking

Communicating is a very important part of educational services. In offices, in residence halls, on campus, staff members and resident advisors chat informally or talk seriously with students.



Above: Dean Goldberg stops to talk with two students on campus.

Below: Resident advisors sometimes find humor in a term paper.



Dr. Howard Figler, director of the counseling center, makes plans with a group of students who help to advise other students.





Above: Counselor Wanda Ruffin works with a student in the Counseling Center.



Above right: Resident advisors, living in the residence halls, are available to help students.



Right: Counselor Jeri Rockett (right) and a student go over information available in the center.



Self-Created Stress

Some general tips for those under pressure are:

- A. Avoid or drastically reduce
 1. sugar
 2. caffeine
 3. processed foods
 4. stimulant drugs
 5. alcohol
- B. Eat and sleep regularly
- C. Exercise aerobically at least 3 times per week
- D. Practice some form of relaxation technique daily

Darcie Lolo

At every moment of our lives, we encounter stressful events that induce varying levels of physical or psychological tension. As our bodies adjust to these changes, a variety of hormones are released in response to the actual or perceived stressful situation.

Stress-related events can range from doing calisthenics to speaking publicly or from driving a car to falling in love. Many people experience a higher level of tension because they allow ominous implications to heighten their emotions and distort their perceptions. For example, a person psychologically unprepared for a test or presentation may do poorly simply because of a lack of self-confidence. Since we are the cause of our stress, we can learn to repress stress-related reactions and gain a greater understanding of ourselves. For this reason, it is important to investigate various causes of stress and examine the methods available to reverse any harmful effects.

More than 40 years ago, Hans Selye, author of *The Stress of Life*, accurately defined stress as "the body's response to non-specific demands." These demands and responses interact and may produce beneficial or detrimental results. Handled poorly, or allowed to dominate our feelings and actions, stress can cause a number of illnesses, including hypertension, asthma, heart disease, and ulcers. On the other hand, a greater awareness of stress patterns and levels can encourage motivation and prepare the individual for future situations.

The years spent at Dickinson have always been full of potentially stressful adjustments and changes. Students face academic as well as social pressures nonexistent in their high school environments. At Dickinson, students see unlimited possibilities for self-improvement through on- and off-campus em-

ployment, academic assignments, and co-curricular activities. Each of these, formed to provide a different community or campus service, offers unique rewards. Wisely chosen, these activities and other responsibilities foster individual growth and offer valuable personal gains. However, each sector adds its own set of time requirements that begin to make more strenuous demands on the student than were initially expected.

Jeri Rockett, holding master's degrees in both counseling and community



health, is newly arrived on the Dickinson counseling staff. Promoting a holistic approach to student health, she and the Counseling Center view students with regard to their overall well-being. Since pressure can have serious consequences, the Counseling Center has introduced "stress-reduction workshops" that offer tips on tackling the most stressful and re-occurring event in a student's life—EXAMS.

Students demonstrate increased tension as exam time approaches. Symptoms may range from nausea and headaches to "butterflies" and irritability.

The average student does not attack the problem of stress effectively. Jeri Rockett hopes to promote a clearer understanding of stress-reduction methods in all students. "The primary goals," says Ms. Rockett, "are to provide students with a broad-based understanding of stress, offering them techniques to cope with excessive stress."

The "stress-reduction workshops" have already helped many students pinpoint their tolerance levels and realize their daily pace. After this is accomplished, a variety of nutrition and relaxation routines are suggested.

In the final analysis, it is up to people to realize their potential, to allow themselves the freedom to make sensible choices. Much of what we feel is caused by what we tell ourselves and how we interpret situations and changes in our lives. When we realize that our achievements and failures are only one aspect of our personal worth, irrational ideas will be less upsetting and can be put into the right perspective.

It must be remembered that stress is the result of a process that we can control, and it is possible for each of us to find a comfortable balance between tension and relaxation.



DARCIE LOLO is a junior majoring in economics who plans to do graduate work in economic forecasting. She was an intern first semester with the Communications and Development Division.

Alcohol—The Drug of Choice

Wanda Ruffin

Alcohol is an accepted drug for use in all sectors of our society. Drinking at wedding celebrations, with meals, at social gatherings, in religious ceremonies, and for medical purposes are common practices.

Nobody knows exactly how many young people drink, but all across the country, people are becoming more and more conscious of drinking patterns among college students. Why is this such an issue? Because, like any drug that affects the mind, alcohol has the potential to be abused and is increasingly being abused.

In the past, consumption of alcohol was thought to be predominantly an "adult activity." Drugs such as marijuana and heroin were associated almost exclusively with the "youth scene." We are now seeing that alcohol is the drug of choice for young and old alike. The National Institute on Alcohol Abuse and Alcoholism states that alcohol is the most commonly abused drug in the United States, Canada, and Europe. There are almost 100 million drinkers of all types in this country alone. Many colleges are beginning to address these facts. Dickinson is no exception.

The liberal arts tradition generally encourages a quest towards knowledge for its own sake. Therefore, efforts are made to increase students' knowledge of alcohol and to encourage discussion of the issues surrounding its use. This approach will hopefully lead to responsible decisions about the use of alcohol.

In October of this academic year, three staff members from the Michigan State University Substance Abuse Program led alcohol education workshops for faculty, administrators, and students. Topics included myths and facts about

alcohol abuse and alcoholism, legal issues, programming ideas, use of alcohol by fraternities and sororities, and methods of confronting problem drinkers. Those in attendance came away feeling more knowledgeable about drinking issues.

Credit for the workshop goes to "ALKY," a newly-formed student organization which helped arrange for the Michigan State team to visit Dickinson. The acronym "ALKY" stands for Alcohol Learning and Knowledge for You. ALKY strives to reach students, faculty, and staff by providing information relating to alcohol use and abuse and encouraging responsible and alternative activities to drinking, etc.

ALKY meets weekly in order to focus on the issues and develop strategies that will make the student body *think* about its drinking patterns. With such an organization in existence, Dickinson students, upon graduation, should know what alcohol is, how it affects the body, and what a serious national issue its abuse represents.

Last spring, the Student Affairs and Services Committee developed a report entitled "Alcohol Use at Dickinson College." The report was adopted unanimously by the faculty as an initial study into the issues surrounding alcohol use. One of the recommendations was for the development of an ongoing alcohol education program. The purpose of alcohol education is to provide students with an opportunity to re-

examine their behavior and values with regard to drinking. Group sessions are held in residence halls to provide factual information on alcohol use and abuse, to convey the specifics of state law, and to assist people in being responsible party hosts. Plans for future programs include film festivals, alcohol awareness days, and information centers. Other possibilities include greater utilization of the campus media and maintenance of a speakers bureau.

Throughout the educational process, student input and responsibility are seen as the key ingredients to success. With ALKY on the scene, we are developing a corps of highly motivated students determined to have a positive impact on the campus environment.



WANDA RUFFIN, college counselor, joined the Dickinson staff in 1978. A graduate of Mississippi Valley State University, she received the M.S.W. at the University of Pittsburgh.

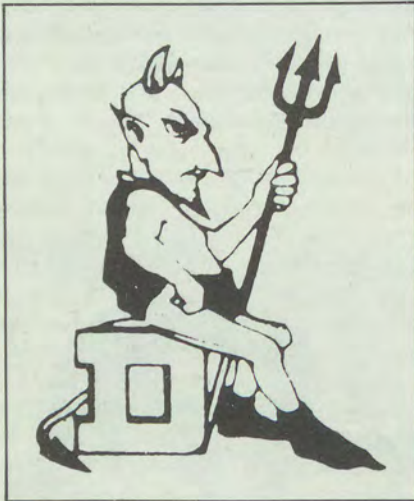
Redskins Cap the Fun

by Alec Sirken

The tradition may have begun with the Over the Hill Gang but never did hat-wearing among the Redskins (Washington's professional football team) reach the level of sophistication it has this year.

No longer does a player simply don a cap and consider himself a part of Red-skin lore. Now he must join the exclusive fraternity of "Red Devils".

The fraternity, founded by Ron Saul, John Riggins, and Bob Kuziel, had its origin during training camp in Carlisle, Pa. As he and several others strolled the Dickinson College campus last summer wearing caps adorned with the Dickinson Red Devil logo, Saul saw the poten-



tial for solidarity among hat-wearers. Immediately he bought 20 hats from a college equipment man.

"He's the territorial governor, a political machine," says Riggins of Saul. "He's the Richard Nixon of the Red Devils."

Like all fraternity brothers, the 15 Devils live by certain rules and creeds. Naturally they have an honor code: "On my honor, I'll do my best, to help myself and cheat the rest."

The rules are simple but strict. Hats must be worn on all road trips and at all team meetings. Failure to wear a hat results in a \$5 fine, payable to Teddy Frisch, sergeant-at-arms.

Members of the Red Devils are all veterans, ranging from third-year safety Mark Murphy to old-timers Diron Talbert, Coy Bacon, and Paul Smith.

Some members would like to see more youth among the Devils. But Riggins explains the debate that has arisen on the subject: "One faction says, 'Bring in the rookies,' and the other says they have to pay their dues."

The idea for the Red Devils caught on during training camp to break up some of the hard work, seriousness, and boredom.

"Basically we're just a bunch of guys out to have a good time," said Fritsch, the first recruit. "But really, this is developing into a strong force of unification on the team. We have so many new guys this year, and it's something to identify with. It helps contribute to leadership and makes people feel they have a role."

Membership in the fraternity is limited only by the number of hats, five of which are currently unfilled. To join, one must have his name submitted to the members and approved unanimously.

"It's definitely an exclusive club," says Talbert.

Notable rejection slips were tendered Joe Theisman and "Stretch" Williams (son of Edward Bennett), who was denied entrance because he is not an active player.

"You better not say anything about that," said Fritsch. "I mean, his father is the president."

"Aw, c'mon Teddy," other players piped in.

Theisman's blackballing was for a different reason.

"Joe's hair is just too pretty," Fritsch explained. "We knew he wouldn't wear the hat. And that's the No. 1 rule."

With the acquisition of a Red Devil hat, a member takes on fraternal responsibilities. Negligence in wearing the hat can result in its being repossessed, or "lifted" in Red Devil terminology.

Benny Malone knows this well after failing to wear his hat a few times when he should have.

"I almost had my hat lifted," he said. "But my running mate John (Riggins) saved me with a unanimous vote."

Rarely do the Red Devils reach outside their exclusive order to honor someone with the fraternity song. They did so once at the end of training camp as Dickinson College president Sam A. Banks addressed the Redskins at a team picnic.

"Hey!" shouted Saul to the president. "What did you say your name was?" Upon the response, a chorus of Red Devils chanted, "Here's to Brother Banks, Brother Banks, Brother Banks, he's with us tonight . . ."

The Red Devils plan to expand the club by one player a week, as long as the hats hold out. They're even considering some rookies, according to chief spokesman Fritsch, but he wouldn't disclose any names.

And what do the Redskin coaches think of this new tradition?

"It's a harmless relief from a very high-pressure business," says Jack Pardee. "It's good for camaraderie and gives the players a chance to laugh at themselves. I think things like this and the Wild Bunch (the nickname adopted by the Redskin special teams) are good for us."

Proudly surveying his expanding troops, founding father Saul recalled the early days. "Ah yes," he sighed. "I can remember when we wrote the charter. There were only three of us then . . ."

This article was originally published in the October 10, 1979 edition of The Washington Star and is reprinted with Mr. Sirken's permission. The author formerly was a member of the Star's sports staff.

The College

Publications

- George Allan, dean of the college. "Sartre's Constriction of the Marxist Dialectic." *Review of Metaphysics*. 33 (September 1979): 86-108.
- Paul Angiolillo, professor of French. *A Criminal as Hero. Angelo Duca*. Lawrence, Kansas: Regents Press, 1979, 211p.
- Joan Bechtel, librarian. "Cambridge, My Loving Mother and Tender Nurse." *John and Mary's Journal* 5 (Summer 1979): 5-17.
- Donald Bowie, assistant professor of English. "Station Identification." *Saturday Evening Post* 251 (November 1979).
- Marcia Conner, associate professor of English. "Provoking Mental Excellence." *Change* 11 (March 1979): 27-28.
- George Ellard, assistant professor of philosophy. A review of *Marx's Social Ontology: Individuality and Community in Marx's Theory of Social Reality* by Carol C. Gould in *American Political Science Review* (September, 1979): 853-854.
- Arturo A. Fox, professor of Spanish. "Esceno Novelistica y dramatismo en el Quijote." *Revista Canadiense de Estudios Hispánicos* 3 (Spring 1979): 246-287.
- Clarke Garrett, professor of history. "Which Cooper? The Site of Cole-ridge's Utopia on the Susquehanna." *John and Mary's Journal* 5 (Summer 1979): 17-29.
- John S. Henderson, associate professor of French. A review of *Higher Education Reform: Implications for Foreign Students* by Barbara B. Burn, ed. in *International Education Review* 4 (Spring 1979): 27-28.
- Sharon Latchaw Hirsh, associate professor of fine arts. "The Introspective Expressionist: Self-portraits of Ferdinand Hodler" in *Expressionism Reconsidered/Houston German Studies* 1 (1979): 80-89.
- Vytautas Kavolis, professor of sociology. "Moralines Kulturos: Zemelapiai, Trajektorijos, Itamos" (Moral Cultures: Maps, Trajectories, Tensions") *Metmenys* 37 (1979): 80-105.
- . "Social Evolution of the Artistic Enterprise." *Research in Sociology of*
Continued on page 10

Former Student Dedicates Book

In July, Praeger Publishers began distributing a book dedicated to K. Robert Nilsson, professor of political science at Dickinson. The book is entitled *International Development Administration: Implementation Analysis for Development Projects*. Edited by George Honadle '66 and Rudi Klaus, it is dedicated to "K. Robert Nilsson of Dickinson College and Bernard M. Bass of SUNY Binghamton—teachers, colleagues, and friends whose horizons are neither limited by national boundaries nor clouded by contemporary conditions."

Professor Nilsson came to Dickinson in 1962 and has been active in promoting opportunities for international study.



He had a major role in establishing the Center for European Studies in Bologna, Italy, served as its first director in 1965-66, returned to its direction in 1970-72, and expects to return in 1980 for another two-year stint.

A recipient of the Lindback Award for Distinguished Teaching, Professor Nilsson's teaching interests include International and Comparative Law, Political Development, European Politics, and International Relations. He has also published articles and delivered papers on these topics, and he is presently editor of the *American Political Science Association's Newsletter on Italian Politics*.

Nilsson received his B.A. from Temple University and an M.A. in International Relations from the Johns Hopkins University's School of Advanced International Studies. His Ph.D. is from Columbia University, where his dissertation research focused on Italian politics.

Many of Professor Nilsson's former students now hold international posi-

tions in the Diplomatic Corps, consulting firms, universities, foundations, federal agencies, and multinational corporations. Some have also served as Peace Corps volunteers. One of those former students, George Honadle '66, is senior editor of and the major contributor to the book.

Honadle is a senior staff member of Development Alternatives, Inc. A former Peace Corps volunteer in Malawi, he was also a member of the first Dickinson group to study in Bologna in 1965-66. He has been a consultant to the World Bank, AID, The United Nations' Food and Agriculture Organization, and to numerous domestic agencies at the local, state, and national levels of government. He has extensive field experience in eight African and two Asian countries, and he has taught and lectured at Syracuse University and Hobart College.

In addition to an A.B. from Dickinson, Honadle holds a post-graduate Diploma in African Studies from the University of Edinburgh and a Master of Public Administration and Ph.D. from the Maxwell School, Syracuse University.

Honadle's is not the only recent development-oriented book to be written by Dickinson graduates: Edgar Owens '48 is the senior author of *Development Reconsidered*, published by Lexington Books in 1972; R. Scott Fosler '67 is co-author of *Urban Government for Valencia Venezuela*, published by Praeger in 1973; and James R. Finucane '64 wrote *Rural Development and Bureaucracy in Tanzania*, which was published by the Scandinavian Institute of African Studies in 1974. Fosler and Finucane are former students of Nilsson, and Fosler also studied at the Bologna Center in 1965-66.

Both Nilsson and college alumni have had a role in shaping critiques of, and developing alternatives to, current practices in international development administration. Professor Nilsson believes the volume dedicated to him is a witness to the value of a multidisciplinary approach to the broader practical implications of technical issues. Moreover, he says, it reinforces his teaching that multicultural experience can add immensely to the quality of a liberal education, and that a liberal education can enlarge the perspectives of public leaders and thus improve the probability that more perceptive decisions will be made.

PUBLICATIONS, continued from page 9

Knowledge Sciences and Art. 2 (1979): 155-188.

Kenneth L. Laws, professor of physics. "Physics and Ballet: a new Pas de Deux." in *New Directions in Dance*. Toronto: Pergamon Press, 1979, 137-147.

———. "An Analysis of Turns in Dance." *Dance Research Journal* 11 (1978-1979): 12-19.

Priscilla Laws, professor of physics. "Patient Attitudes" *National Conference on Referral Criteria for X-Ray Examinations*. HEW Publication (FDA) 17-8083 (April 1979): 33-36.

Nancy Mellerski, instructor in French, Albert Valdman, and Susan L. Heine. *Promenades et Perspectives*. Glenview IL: Scott, Foresman, 1979.

Kenneth Rosen, associate professor of English. "American Indian Fiction." *Association for Study of American Indian Literatures* 3 (Spring 1979): 14-26.

———. "Native American Novels: The First Eighty Years." *Melus* 6 (Spring 1979): 80-91.

———. "American Indian Literature: Current Condition and Suggested Research." *American Indian Culture and Research Journal* 3 (Summer 1979): 57-66.

Eugene J. Rosi, professor of political science. A review of *The Missile Defense Controversy: Strategy, Technology, and Politics, 1955-1972* by Ernest J. Yanarella in *American Political Science Review* 73 (June 1979): 700-702.

J. Mark Ruhl, assistant professor of political science. "Urbanization and Political Demand Measurement in Latin America: The Problem of Lag Effect." *Latin American Research Review* 14 (1, 1979): 145-149.

Robert D. Sider, professor of classical languages. "Tertullian, 'On the Shows': An Analysis." *Journal of Theological Studies* N.S. 29 (October 1978): 339-365.

Ralph L. Slotten, professor of religion. "A Chinese Contribution to Christian Thinking." *Friends Journal* 25 (July 1/15 1979): 10-15.

Ralph E. Smith '65, editor. *The Subtle Revolution: Working Women*, 1979.

Susan Stewart '73. Nonsense. *Aspects of Intertextuality in Folklore and Literature*. Baltimore, Maryland: John Hopkins University Press, 1979, 228p.

Lawrence J. M. Wilt, assistant professor of library resources, and Jane Maienschein, assistant professor of history. "Symbol Signs for Libraries" in *Sign Systems for Libraries*. New York: R. R. Bowker Company, 1979, 105-113.

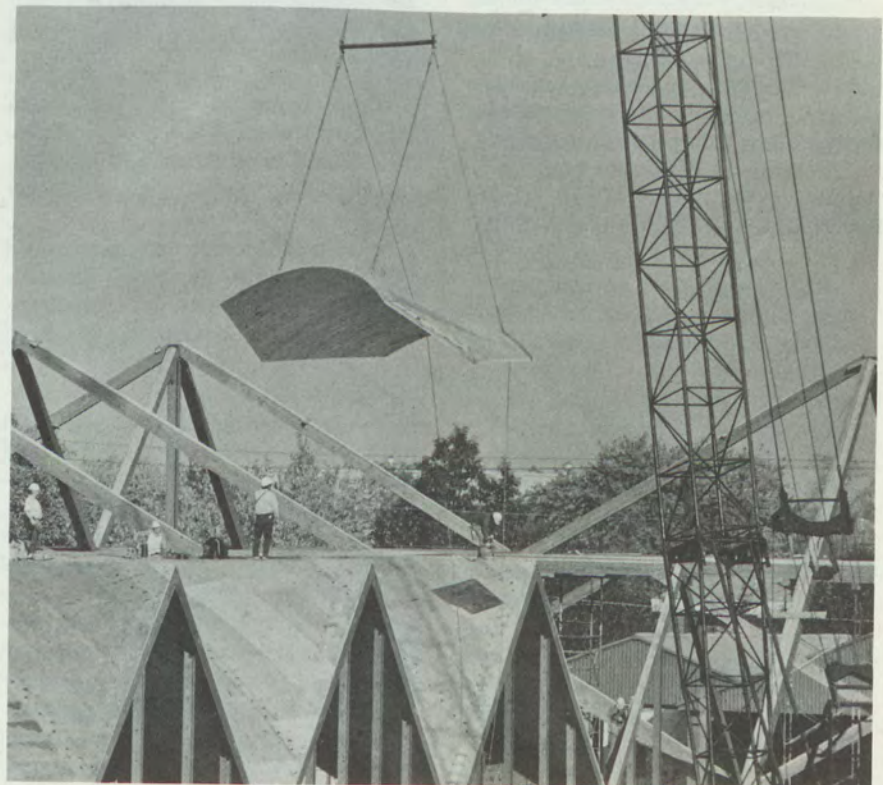
Claude S. Bowman '28. *The College Professor in America*. Reprint. Arno Press.

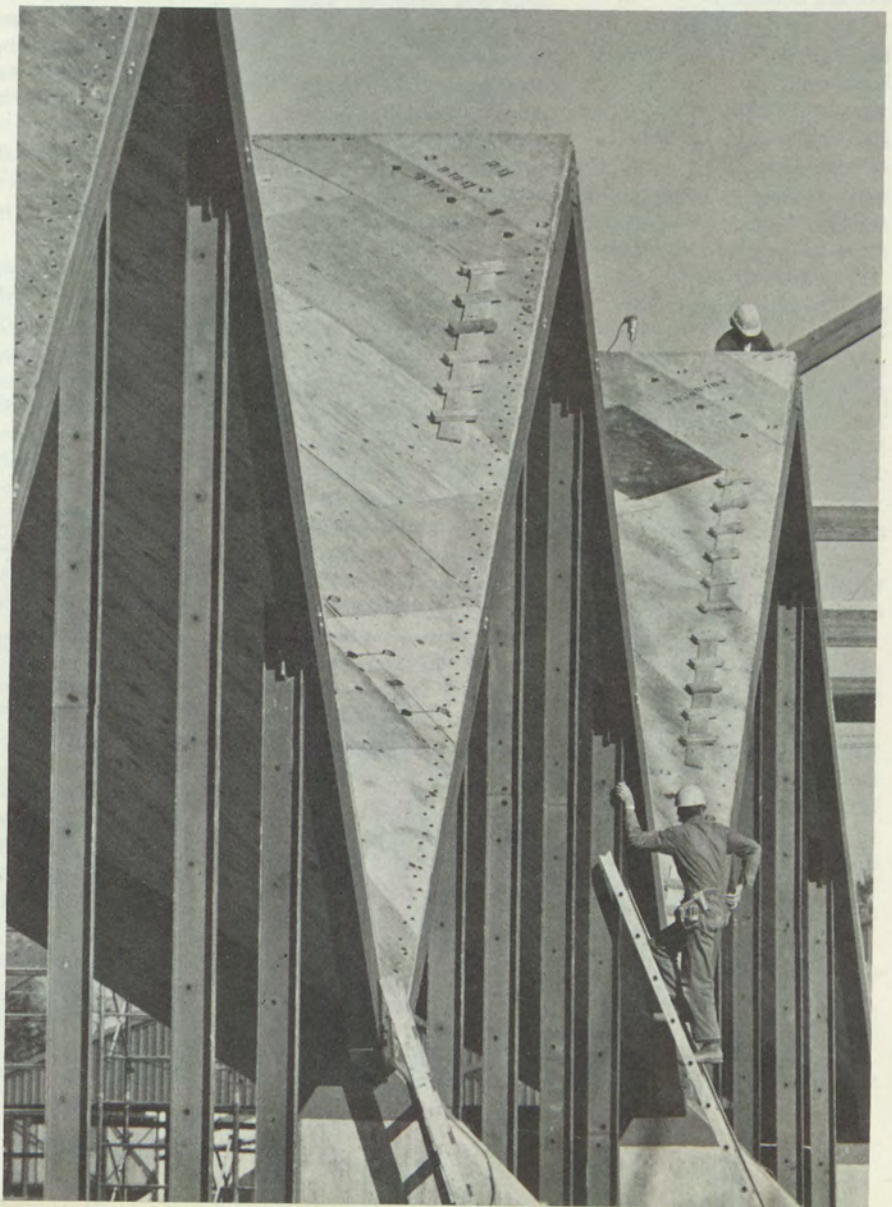
Dr. Bowman is professor emeritus of sociology at Temple University.

John W. Richie '66. "Life Experience Credit: Rip-off or Antidote for Academic Overkill." *The Community College Social Science Journal*, June 1979.



THE ROOF GOES ON





Sidewalk superintendents had a field day—everyone found an excuse to go by the site of the Life/Sports Learning Center—while roof panels were carefully put in place. The interesting building is on schedule and should be ready for occupancy in the fall.

Personal Mention

Engagements

1973, 1976 — NEIL ROSS to MARY-HOLLIS LUBIN. A June wedding is planned.

1974 — LAWRENCE J. LEPIDI to Marti Wuslich. A June 4 wedding is planned.

1975 — JOSEPH MIX to Lynne Wolff.

1977 — MICHAEL MANDAGLIO to Debra Clark. An October wedding is planned.

1977 — KAREN L. DEVANNA to JAMES W. GERLACH. An August wedding is planned.

1978 — TIMOTHY ALLEN SHOLLENBERGER to Marissa J. Mike. A September 1981 wedding is planned.

1978 — WARREN A. NORRIS III to Stephanie L. Treasrau. A May wedding is planned.

1978 — KEITH HARRISON to Rebecca Andrews. A June wedding is planned.

1979 — DAVID C. CAMPBELL to Elizabeth F. Molle. A September wedding is planned.

1979 — KATHY DICICCO to Michall J. Listingi. A May wedding is planned.

Marriages

1928 — PAUL D. OLEJAR to Mrs. Martha S. Ross on September 8. They reside at 664 S.W. Port Malabar Boulevard, Palm Bay FL 32905.

1959 — THOMAS J. deMARINO to Joyce L. Swank on May 18. They reside at 5690 East Happy Canyon Road, Englewood CO 80111.

1966 — DONALD NEIDIG to Patricia Gardner in September. They reside in Alamogordo NM.

1967 — WILLIAM C. BOCHET to Barbara Anne Edwards in August. They reside in Franklin Lakes NJ.

1971 — LISA S. HICKMAN to Charles W. Wood on January 1. They reside at 11847 Antietam Road, Woodbridge VA 22192.

1971 — HARVEY A. BLOCK to Cathy D. Fassler on September 16. They reside in Hillsborough Township NJ.

1972 — ANN E. STILLMAN to William B. Wilson on August 25.

1973 — CHRISTOPHER J. SUNDAY to Joetta L. Miller on September 22. They reside in Greensboro NC.

1973 — DEBRA S. MORESE to Joseph L. Carter on October 20. They reside in Myrtle Beach SC.

1974 — SUSAN J. TERRELL to Gregory B. Moore on October 21. They reside at 2020-B Addison Street, Philadelphia PA 19146.

1974 — GAIL M. ANDREWS to Guy O. Haines on June 30. They reside at 3000 Ford Road, B-47, Bristol PA 19007.

1974 — SUSAN H. TRUIT to Rashmi N. Yajnik on August 4. They reside in Columbus OH.

1974 — BARBARA STRAPP to Jeffrey J. Nelson on October 27.

1975 — SCOTT A. BEAUMONT to Judith Olsen on October 20. They reside at 1530 Spring Avenue, Jenkintown PA 19046.

1975 — WENDY PEHL to Rev. Michael Minnix on November 4. They reside at 231 Hummel Avenue, Lemoyne PA 17043.

1975, 1977 — DAVID A. STONESTROM to FELICE M. HARRIS on July 21. They reside at 1216 California Avenue, Palo Alto CA 94306.

1975 — LISA A. ROSSBACHER to Dallas D. Rhodes on August 4. They reside at 13745 East Via del Palma, #27, Whittier CA 90602.

1975 — KERRY B. FISHER to Page Carey in September. They reside at 4 Upland Road, #44, Baltimore MD 21210.

1975 — CHRISTOPHER R. BECHTLE to Adrienne Edsall in October. They reside in Kinnelon NJ.

1976 — JEAN IVAN to Christopher E. Mennone in December. They reside in Phoenix AZ.

1976 — ELENA MARTINEZ-VIDAL to Graham Kerr Draughon in December. Their address is P. O. #187, Yemassee SC 29945.

1976 — ROBIN WAGNER to Michael Birkner on October 6. They reside at 2150 Richmond Road, #55, Lexington KY 40502.

1976 — NANCY A. ISAACS to THOMAS F. STERLING on October 6. They reside at 94 Stone Mill Road, R.D. 2, Hummelstown PA 17036.

1976 — MARY JO EGAN to Paul A. Woodford in September. They

reside in Chatham NJ.

1977 — BRIAN KAESTNER to JANE BURTON on August 11. They reside at 355 Duck Pond Road, Locust Valley NY 11560.

1977 — WILLIAM R. STOVER to Patricia L. Davies on April 26.

1978 — MARCIA FOOTE to Jeffrey Wiles on October 25. They reside in Harrisburg PA.

1979 — JODI HARK to Michael J. Rigberg on August 25. They reside in Philadelphia PA.

1979 — WILLIAM C. STAMEY to Judy Ann Patton on July 28. They reside in Ann Arbor MI.

1979 — JAMES F. MARRAN, JR. to Francine J. Wagener on July 21. They reside in Arlington VA.

1980 — JILL F. KAGER to Philip K. Ireland in September. They reside in San Diego CA.

Births

1961 — To Loren and ESTHER FEATHERER BERRY by adoption on December 7, 1978 a daughter, Ellen Esther, who was born on December 2, 1978.

1964 — To Robert and SUSAN TELLER GOODMAN a son, Michael Teller, on January 19, 1979.

1967 — To John and MELINDA CHAFFINCH MERWIN a son, John Chaffinch, on July 13.

1967, 1969 — To Dr. and Mrs. J. MICHAEL SCHNELL (JOAN EISENBERG) a son, Jacob Kingsfield, on July 8.

1968 — to EDWARD C. and Judith B. WILSON a son, Andrew Bogdan, on May 6.

1968 — To Angelo and NANCY DAVIDSON BASSANI twins, Laura Ruth and Jeffrey Calvin, on July 6.

1968 — To Mr. and Mrs. THOMAS N. HULL III a daughter, Kirsten Elizabeth, on September 26.

1968, 1969 — To JOHN and NANCY SNELL GRIFFITH a son, Christopher William, on June 23.

1969 — To Mr. and Mrs. Charles A. Maddock (DOROTHY BOND) a daughter, Elizabeth Bond, on August 3.

1970 — To CALLISTA L. O'BRIEN and CHARLES A. CRYSTAL a son, Jonathan O'Brien, on February 6, 1979.

1970 — To Mr. and Mrs. William

A Cage of Microcosms

Have you ever felt a need for an extra *Microcosm*? In a cage in Holland Union, the current staff has discovered a treasure trove of the yearbooks—65-69, 73-78—in assorted amounts.

They are willing to part with them at a reduced rate. For further information contact: Nancy Van Dolsen
Box 1666
Dickinson College
Carlisle, PA 17013

Yearbooks will be sold on a first come, first served basis until they are gone.

R. David (KATHY HAMILTON) a daughter, Cami Louise, on March 11, 1979.

1971 — To MARK and HARRIET MARCUS LEHMAN a daughter, Julia Beth, on October 26.

1971 — To W. DAVID and CAROLYN KRUSE MENZIE a son, William David III, on October 11.

1971 — To BILL and Susan HENDRICSON a son, Aaron Charles, on December 15, 1978.

1971 — To Paul M. and KATHARINE RICHARDSON LEVIT a daughter, Mindy Rachael, on July 25.

1971 — To Mr. and Mrs. THOMAS E. BOOP a son, Garrett Malcolm, on August 31.

1972 — To NICHOLAS and CAROL FRITZ PAWLOWSKI a son, Peter Nicholas, on October 2.

1973, 1976 — To JAMES V. and SANDRA EMREY McGOUGH a son, James Robert, on August 2.

1973 — To James and SALLY SPENCE COCHRAN a daughter, Catherine de La Serre, on February 5, 1979.

1973, 1975 — To DAVID J. and CAROL KELLEY NEWELL a daughter, Lindsay Kinkead, on September 17.

1977 — To Torbjörn and KIM WALKER BERGSTROM a son, Per Christopher, on September 4.

The Classes

1906

Mrs. HELEN SMITH HARRIS, who celebrated her 98th birthday on September 11, is a guest at the Newburyport Manor Chronic Hospital, Newburyport MA 01950.

1918

Mr. and Mrs. HERBERT K. ROBINSON celebrated their 57th wedding anniversary on October 23, and Mr. Robinson's 84th birthday on August 31. They have moved to 21 Reo Avenue, Port Jefferson Station NY 11776.

1929

BLAINE E. CAPEHART, Moorestown NJ, was a recipient of the 1979 Trial Bar Award, presented annually by the Trial Attorneys of New Jersey. He is a partner in the firm of Capehart & Scatchard. Mr. Capehart was chosen for the award for "distinguished service in the cause of justice."

1930

EDGAR J. KOHNSTAMM, New York NY, has been elected for a two-year term as president of the National Association of Fruits, Flavors and Syrups, Inc., an association of food processors and suppliers of raw materials and synthetics to the food industry.

Sylvia Mapes, granddaughter of HAROLD G. BIGLEY of Clearfield PA, is a member of the Dickinson freshman class.

Dr. ALEXANDER R. BURKOT was honored in October for his leadership in the field of education by the Campbell University Circle of Omicron Delta Kappa. Dr. Burkot, who retired in December, had been at Campbell for 45 years, serving as professor, vice president, provost, dean of academics, and dean of men. He is recognized for his outstanding leadership in Christian education throughout the United States.

1931

Mrs. Phoebe Roberts Jenkins, wife of Trustee WILLIAM S. JENKINS, Frostburg MD, died on December 9.



Blaine Capehart '29

1932

STEPHEN and ESTHER CHAMBERS TELLER celebrated their 45th wedding anniversary in September with an open house hosted by their children. Mrs. Teller is active in civic and church affairs, and Mr. Teller is an attorney as well as solicitor for the Luzerne County Institution District and for Children and Youth Services. The Tellers reside at 181 North Franklin Street, Wilkes Barre PA 18701.

1934

Dr. ROBERT L. BLOOM, professor of history at Gettysburg College, served as a member of the Dickinson College summer school faculty during the past summer. He taught American History in the Civil War Period.

1935

LOCKWOOD W. FOGG, JR. Wallingford PA, has been appointed vice president and secretary of Reading Company, which formerly operated the Reading Railroad.

ROBERT D. WAYNE retired on July 1, 1978 from the faculty of the California Institute of Technology, division of humanities and social sciences, upon the completion of 26 years teaching German language and literature. He resides at 909 Lyndon Street, South Pasadena CA 91020.

1936

Dr. ERWIN WICKERT retired from the diplomatic service this month and has returned to the Federal Republic of Germany

Missionary Reflects

In 26 missions abroad over 43 years, Dr. Lowell M. Atkinson '32 has seen a lot more of the world than he expected. He has traveled to South Africa, the Holy Land, Europe, the Caribbean, Bermuda, South America, Hawaii, and the Bahamas.

Although he never politicized his preaching, he has some observations about apartheid in South Africa and racial unrest in the Caribbean. Dr. Atkinson feels that the "ridiculous" policy of apartheid is "changing. Whether or not it's fast enough or radical enough is another question." He also sees change in Caribbean areas emerging from colonial

rule. He thinks Marxist ideology has taken hold there but that the church is also strong.

Dr. Atkinson says he doesn't preach against Marxism but hopes the influence of Christian doctrines will encourage peaceful change. "Faith and confidence are important, especially to the people in the West Indies, because they have to emerge from the depression of slavery to stand on their own feet, make their own decisions, and forge their own future," the missionary says.

The 1980 edition of *The Ministers Manual* includes one of his sermons and two prayers.

where he and his wife reside in Oberwinter near Bonn. Dr. Wickert served as Ambassador to Peking for four years.

1937

David H. Kline, youngest son of Mrs. GRACE E. KLINE, is a business administration graduate of Drexel University and is now assistant credit manager at Leeds & Northrup, North Wales PA. He was married on November 17 to Denise Cronk.

1938

Mrs. DOROTHY McBRIDE MOWERY retired on June 8 from the Coloma Community Schools where she was a first grade teacher. She and her husband have moved to 1134 South Highland Drive, Village of Highland Park, Lake Wales FL 33853. The August issue of the *Dickinson Magazine* incorrectly listed her name as DOROTHY HYDE MOWERY.

Dr. WALTER V. EDWARDS represented the College at the inauguration of Eugene M. Hughes as president of Northern Arizona University in November. He is physician and director of Southurst Disability Evaluation Center, Phoenix AZ.

JESSE L. CRABBS, attorney of Hanover PA, is serving a three-year term on the Pennsylvania State Harness Racing Commission. Senior partner in the law

firm of Crabbs, Cashman and Frey, Mr. Crabbs is deeply committed to harness racing, having served as counsel to the United States Trotting Association.

1939

ALICE EASTLAKE CHEW, a life science instructor, retired this summer after serving nearly two decades at Santa Monica College. She and her husband, Dr. Robert Chew, a desert biologist, have moved to Portal AZ where they will study the ecosystem and have access to a biology research center which will keep them active and in touch with other



biologists. While Mrs. Chew was teaching at Santa Monica, she devised two courses, one in human ecology and the other in human sexuality, which she taught for nearly a decade. The Chews are planning a trip to New Zealand and Australia. An article on the effects of microclimate on ant distribution by Alice and Robert Chew will appear in a forthcoming issue of *Insects Sociaux*.

1941

JOYCE CRICKMAY WALTERS received her California marriage/family/child counselor license in July. She and her husband have a new address: Box 1078, Cambria CA 93428.

1942

YOUNG D. HANCE, Prince Frederick MD, received a certificate of merit award in agriculture during the annual Maryland Agricultural Forum at the University of Maryland. A tobacco, grain, and beef cattle farmer, Mr. Young served as Maryland's first secretary of agriculture from 1972 through 1978.

SYLVESTER S. AICHELE, Rosemont PA, represented the College at the inauguration of Dorothy McKenna Brown as president of Rosemont College in September.

GEORGE F. MYERS, Camp Hill PA, was appointed senior vice president for the Dauphin County region of Fulton Bank. He had been senior vice president and director of Dauphin Deposit Bank and Trust Company.

1944

JOHN HARVEY, Rumson NJ, has been appointed vice president, communications, of the American Paper Institute. He was formerly vice president, corporate communications, Metropolitan Life Insurance Company. His career spans 30 years in public relations and advertising and he has directed two programs that received Silver Anvil Awards.

Rev. ROBERT L. CURRY, Langhorne PA, represented the College at the inauguration of W. Sherrill Babb as president of Philadelphia College of Bible in September.

Mrs. BETTY W. KUESTER, Charlotte NC, represented the College at the inauguration of Richard Leslie Morrill as president of Salem Academy and College in October.

1948

EDGAR "TED" OWENS suffered a severe heart attack in Vienna, Austria in August while attending the United Nations Conference on Science and Technology for Development. After spending five weeks in the hospital in Vienna, he returned to his



Young D. Hance '42 receives an award.

home in Bethesda MD, where he is now convalescing.

1949

WILLIAM J. TAYLOR, a member of the College board of trustees, received the Significant Sig Award of Sigma Chi Fraternity for his eminent career in law and transportation.

JOSEPH A. ROSENTHAL, San Francisco CA, was named in September as head of the University of California-Berkeley's 5-million-volume library. A nationally recognized expert in resource-sharing among libraries, he has been acting head of the campus's 20-branch library system. He received a master's in library science at Columbia and served an internship in the Library of Congress. He joined the UC-Berkeley library staff in 1970.

1950

JAMES K. ABBOTT, Wilmington DE, was promoted to vice president and general manager, container division, National Vulcanized Fibre Company. He has been with NVF for 29 years in various capacities in sales and management.

1951

RICHARD E. HICKS, M.D., psychiatrist and director of education and training at Friends Hospital, Philadelphia PA, participated in the planning for the hospital's seventh annual clinical conference in October. The conference drew 300 mental health professionals from across the nation to Friends, America's first private nonprofit psychiatric hospital.

JANET M. KNOBLAUCH MIL-

LER is residing at 1906 Yardley Commons, Yardley PA 19067. She works in Trenton, where she also teaches decorating. Her plans for the future are to design and build a solar energy duplex at Brant Beach.

1952

THOMAS and JOAN BARE '54 celebrated their 25th wedding anniversary by taking a cruise to the Bahamas. The Bares reside at 2238 Fairhill Avenue, Glenside PA 19038.

The Rev. JAMES C. KEESEY was appointed in June as Pueblo district superintendent for R. M. Conference of the United Methodist Church. He and his wife (HELEN HOLMES '51) have moved to 88 Amherst, Pueblo CO 81005.

1954

Colonel RONALD McGOWAN retired from the Air Force in August and has moved from California to Tennessee. He is now associate director in internal medicine at East Tennessee State University, a university which is just two years old. Dr. McGowan with his wife, LIBBY MOUNTZ '55, and three children are living at 302 Hillside Road, Johnson City TN 37601.

PAUL TARR III is a division leader for the 1979 Springfield and Sangamon County (IL) United Way campaign. He is senior vice president of the Horace Mann Insurance Company.

Dr. GEORGE M. GILL has been named associate director of drug regulatory affairs at Hoffman-LaRoche, Inc. Dr. Gill has been with Roche for 11½ years doing research in cancer, infectious dis-



ease, and pediatric pharmacology. He is also director of the Valerie Fund Children's Cancer Clinic at Overlook Hospital, Summit NJ, and assistant professor of clinical pediatrics at the College of Physicians and Surgeons of Columbia University. His daughter Betsy is a junior at Dickinson and his son Christopher is a freshman at Oregon State University. Dr. Gill reports that he is the only Dickinsonian who is presently a member of the University Glee Club of New York, made up of 120 ex-college singers.

1954

George N. Henrich, husband of ALTHEA TROCHELMAN HENRICH and father of Pamela, a member of the sophomore class, died after a short illness on November 20 from cancer. A son also survives.

1955

LINDA OBERHALTZER ENGLERT received an M.A. in human development from Fairleigh Dickinson University. She is currently teaching 6th grade in Brielle NJ.

1956

Dr. K. RICHARD KNOBLAUCH has moved to 234 McKinley Avenue, Grosse Pointe Farms MI. He chairs four departments of the University of Detroit Dental School. His oldest daughter, Kathy, is a student at Emerson University.

In January the county court system of Solinas CA consolidated and FRED NOVINGER became a judge of the Monterey County Municipal Court. Judge Novinger resides at 9435 Valley Oak Way, Solinas CA 93907.

1958

Dr. JOHN WILEY is serving as a division leader for the Westfield

(NJ) United Fund program. A graduate of the Pennsylvania School of Dental Medicine, Dr. Wiley practices in Westfield where he resides with his wife and two children.

1959

THOMAS J. DeMARINO, Denver CO, opened his law firm on June 1 with emphasis on products liability, professional malpractice, and workers' compensation—black lung law as insurance defense counsel.

RONALD M. NADITCH, Annapolis MD, has been named for the second time to *Who's Who in American Law*. He recently received "a" rating in Martindale-Hubbell, a national law publication for attorneys.

W. CREIGHTON REED has been named vice president of the Darien CT, industrial marketing research and consulting firm, Smith, Stanley and Co. He previously was vice president/marketing, Stendig International, Inc., New York. He resides with his wife and three children in Riverside CT.

H. JAY ZUKERMAN has been promoted to vice president of Center Financial Group, a real estate financing company. He resides at 1011 Palm Avenue, Los Angeles CA 90069. This information was incorrectly listed under the Class of 1952 in the November issue of the magazine.

1960

JAN M. WILEY, Dillsburg PA, has been appointed a member of Commonwealth National Bank's



Harrisburg region board. Mr. Wiley is the senior partner in the Dillsburg law firm of Wiley and Benn and has served as chairman



The Catoctin Run

In September when President Carter did the 10,000 meter run at Catoctin Mountain National Park in Maryland, the event had Dickinson overtones. Involved with organizing the run and on hand all day to help coordinate the affair as well as to run the race was David Theall '56. Also among the runners

was David Watkins, associate professor of physical education.

In the picture above, Dave Theall is the man with the beard standing next to the President. He is associate editor of *Trackmaster* magazine and works with HEW in the Office of Personnel Systems Integrity in Washington.

of the bank's Dillsburg advisory board since 1970, a post in which he will continue. He resides with his wife and three sons in Dillsburg PA.

1961

The Rev. JEFFREY C. WOOD appeared on WOR-TV's Point of View program explaining his work as an evangelism executive in the national and international work of the United Presbyterian Church in the USA. He also teaches a course in evangelisation at Princeton Theological Seminary. He resides with his wife and two children in Ridgewood NJ.

1963

SUSAN GRAETZ TRAGESSEER represented the College at the October inauguration of Norman Lawrence Stewart as president of Rockford College. She and her husband reside at 6328 Seventh Avenue, Kenosha WI 53140.

Mr. and Mrs. STEPHEN COURTLAND and their two children have moved to 1000 Mount Vernon Avenue, Charlotte NC 28203. Steve continues to prac-

tice law in Charlotte with the firm of Kennedy, Covington, Lobdell and Hickman.

1964

WILLIAM M. McCARTY, Brattleboro VT, has been re-elected by the incorporators of Vermont Legal Aid, Inc., to his ninth term as a member of the board of trustees. At the organizational meeting held in Montpelier, Mr. McCarty was elected president of the board for 1979-80. A member of the law firm of McCarty & Rifkin, he served the past four years as treasurer of the board.

Dr. SUSAN N. BOUTROS, assistant professor of biology at the University of Pittsburgh at Bradford, was promoted to associate professor with tenure. She joined the UPB faculty in 1971. Dr. Boutros is the co-author of a student laboratory manual, *Problem Solving: The First Two Years in the Life Science Laboratory*. She resides with her husband and four children in Limestone NY.

WILLIAM T. SPAHR, JR., Exton PA, has been appointed senior vice president and senior commercial lending officer in the



corporate division of Commonwealth National Bank, Harrisburg PA. He was previously affiliated with Girard Bank.

KATHY GALLAGHER DAVISON has joined the staff of Dale Denton Real Estate, Inc., Washington DC. She and her husband reside at 627 East Capital Street, S.E.

Dr. M. M. RIDDLESBERGER, JR., has been promoted to clinical associate professor of radiology at the State University of New York at Buffalo School of Medicine. During the past year he had three articles published in the U. S. radiologic literature. He resides with his family at 82 Martha Place, Hamburg NY 14075.

ROBERTA WILLIAMS FRANCIS was one of 16 to receive honorable mention in a *Time* magazine photography contest, "The Spirit of Competition," judged by George Plimpton. Her entry, which was of her son Christopher in Boston's Fenway Park, appeared in a December issue of *Time*.

1965

ROBERT A. SCHAMBACH represented the College at the October inauguration of Eugene Summer Mills as president of Whittier College. He is an associate professor of chemistry at Whittier College.

Dr. CHARLES H. LIPPY, Pendleton SC, presented papers during 1979 at the annual meetings of the South Carolina Academy of Religion, Southeastern Region of the American Academy of Religion and Popular Culture Association in the South, in addition to several others.

1966

BARBARA J. SONBERG joined the management services division

in September as an operations research analyst with McCormick & Company. She has served the past several years as a part-time instructor at Essex Community College where she taught courses in statistics, probability, business mathematics, physical science, astronomy, and computer programming. She resides with her husband and two children in Joppa MD.

Dr. GEORGE HONADLE presented a paper to a conference on "Rapid Rural Appraisal" held in December at the Institute for Development Studies, University



of Sussex, England. His paper was titled "Rapid Reconnaissance Approaches to Organizational Analysis for Development Administration." His wife, Beth, completed her Ph.D. in October at Syracuse University and is an economist with the U. S. Department of Agriculture. The Honadles reside at 5526 Oakmont Avenue, Bethesda MD 20034.

NANCY WILSON DONOHUE received an M.S. in library science in June from Drexel University and is now librarian/media center director at Cherokee High School, Marlton NJ. She resides at 309 Jess Avenue, Haddonfield NJ 08033.

1967

Our apologies to MARSHA MOROH for incorrectly spelling her name and also for listing an incorrect address in the August issue of *The Dickinson Magazine*. Her correct address is 20 East 93rd Street, New York NY 10028. Dr. Moroh is chairman of the computer science department at the City University of New York Sunnyside Campus, Staten Island.

ANN ODETTE WHITLOW was an elected delegate to the January White House Conference on Small Business held in Washington DC. In addition, she has been appointed to the Private Industry

Council of CETA for the Baltimore Metropolitan Consortium, and writes a weekly column on interior design in *The News American*, a Baltimore city newspaper. Ann recently moved to 16112 Roundhill Road, Baltimore MD 21218.

Attorney STEWART GLENN has been named general chairman for the 1979 Newburgh NY United Fund campaign. He practices with the law firm of Northrop and Stradar. He resides with his wife and two sons in Newburgh NY.

STEPHEN C. SILVER M.D. was appointed an assistant professor of surgery at Jefferson Medical College. Dr. Silver practices colon and rectal surgery in Drexel Hill. He resides at 5 Michele Drive, Media PA 19063.

Dr. J. MICHAEL SCHNELL has become a Diplomate of the American Board of Ophthalmology. He practices in St. Albans VT and resides in Fairfax VT with his wife (JOAN EISENBERG '69) and son.

JAMES DAVID SLEEPER, JR., Medford NJ, received an M.B.A. in June from Drexel University.

SCOTT FOSLER was recently elected president of the Montgomery County (MD), County Council. He resides at 104 Woodbine Street, Chevy Chase MD 20015.

1968

RUSSELL F. FULMER represented the College at the October inauguration of George Marion Harmon as president of Millsaps College. He resides at The Veranda Apartments #B-11, 1140 North Greymont Avenue, Jackson MS 39202.

DOUGLAS B. MCGRAW is in his third year as assistant professor of sociology at Emporia State University in Kansas. Specializing in stratification and the sociology of religion, he recently published articles on religious commitment and on the neopentecostal movement. Prior to going to Emporia, he spent four years as an Army officer and another four and a half as a graduate student at the University of Massachusetts. He resides with his wife and two sons at 1809 Briarcliff Lane, Emporia KS 66801.

The life department of the Boston Service Center, under the direction of PAUL S. BEARD, J.D.,

CLU, life marketing manager, was recently awarded West Life Insurance Company's top production honor for outstanding sales expertise and service to clients during the second quarter of 1979. Paul has been named a regional design manager for Western/St. Paul Life Insurance. He resides at 34 Tedesco Street, Marblehead MA.

KARL KUECHENMEISTER has been named vice president, western sales, for NBC Television Network, Los Angeles CA.

ANNE BRADSTREET GRINOLS has been appointed coordinator of reading programs at Cornell University. A certified reading specialist, Anne has been a study skills instructor in Cornell's Learning Skills Center. During 1978-79, she was the executive director of the American Cancer Society of Tompkins County.

BARRY RASCOVAR is deputy editorial page editor for the *Baltimore Sun*. His new address is 1 East University Parkway, #1208, Baltimore MD 21218.

KAREN SMITH SELLERS was promoted in May to the rank of assistant professor of ministry studies at United Theological Seminary of the Twin Cities. In September she began graduate studies towards a Ph.D. in educational psychology at the University of Minnesota. She and her husband reside at 5501 Park Avenue, South, Minneapolis MN 55417.

MICHAEL DELLA VECCHIA, attorney of Pittsburgh PA, has been elected recorder of deeds for Allegheny County.

FLOYD C. SMITH was promoted to the rank of major on December 1. He is assigned to Assistant Chief of Staff, G1, 3d Armored Division, Frankfurt, Germany.

1969

ALFRED H. JUECHTER, JR. and John E. Rosenberg have formed a partnership for the general practice of law under the firm name of Rosenberg & Juechter with offices in West Chester PA and Centre Square PA.

The address of JERI YAVERBAUM GREENBERG is 3135 Tenneyson Street, N.W., Washington DC 20015. The street was incorrectly spelled in the last issue of *The Dickinson Magazine*.

KEVIN A. HESS, Carlisle PA,

has been promoted to first assistant district attorney of Cumberland County. He previously served as deputy district attorney. He is a partner in the law firm of Fishman and Hess.

PAUL LENTZ received a master of science degree in computer science in May from Johns Hopkins University. He is now employed in the software development with GTE Telenet, a leading firm in the area of computer communications networks. Paul previously taught high school physics and photography. His new address is 3905 Beltsville Road, #33, Beltsville MD 20705.

JOHN GRIFFITH was appointed in August as director of admissions at Davidson College. NANCY SNELL GRIFFITH is editing a bibliography on Albert Schweitzer for publication next spring. They reside in Davidson NC with their son.

O. ALDON JAMES, an appraiser and dealer in rare antiques and also the youngest Governor of the National Arts Club, recently exhibited a collection of Ming and Ching Dynasty porcelains and period American furniture at the Henlopen Acres Art League. Henlopen Acres, on the Delaware Atlantic coast, is the summer home of many U. S. Senators and Congressmen as it is the closest Atlantic Beach to Washington D.C. He is the son of Dr. OLIVER A. '29 and Mrs. JAMES who maintain a summer residence at nearby Rehoboth Beach, where Aldon had previously made contacts that have placed his Objets d'Art in the homes and offices of several Washington officials. He also maintains part of his collection in his studio at The National Arts Club.

SAMUEL B. HORNSTEIN, attorney of Doylestown PA, has been elected president of Big Brothers of Bucks County, Inc. The organization is a United Way agency serving fatherless boys throughout the county. A partner in the law firm of Hornstein, Ghen & Associates, Mr. Hornstein, executive vice president of Franklin Abstract Corp, is also president of Region III of Big Brothers/Big Sisters of America and serves on the national board of directors of that agency.

1970

CATHERINE HAVERKAMP

WALLACE received a master of city and regional planning degree in May from Catholic University. She is a senior planner with the Maryland-National Capital Park and Planning Commission. Careen and her husband reside at 4102 Riverview Court, Dunkirk MD 20754.

In September, ADRIA FREDERICKS became director of the Wellsville (NY) Child Care Center. Her husband, David Bear, published his first novel, *Keeping Time*, in November. They reside in Whitesville NY 14897.

GREGORY W. PEDLOW received a Ph.D. in history in November from Johns Hopkins University. He is currently teaching for the University of Maryland, European Division, in Giesen, Germany.

KATHEEN HAMILTON DAVIS is working on a master's degree in reading at California (PA) State College. She resides with her husband and four children at Elm Drive, Box 40-A, R.D.2, Waynesburg PA 15370.

KENT M. McLEAN is pursuing a second master's degree, this one in business administration in management and finance at Wright State University. DONNA '72 has begun her second master's degree; she started her master of arts program in school psychology in June at Wright State. The McLeans reside at 4931 Longford Road, Dayton OH 45424.

FREDERICK "FRITZ" BLUME is doing free-lance literary work for Parliament Publishing Company. In addition he also has a successful in-home tutorial service in the Bay Area. Fritz resides at 1384 Queens Road, Berkeley CA 94708.

1971

DAVID E. KLEISER has been elected to the board of directors of the Lebanon Valley Chambers of Commerce and has been appointed to the newly formed small business committee of the Pennsylvania State Chamber of Commerce. His address is 332 North 10th Street, Lebanon PA.

MARILYN WEINER KOHAN has joined the professional staff of the Hedwig Gruenewald Nursery School of Congregation B'nai Israel. She is teaching the morning 4-year-old class and an extended Monday afternoon session. She

previously taught pre-school in Maryland for five years. Marilyn resigned as head teacher and administrative assistant of the Harper Square Child Care Center, Chicago IL, last June in order to move to 102 Walker Road, West Orange NJ, where she resides with her husband, Allen, who is a business analyst at Allied Chemical.

BERT TALLEY has been principal at Terry Children's Psychiatric Center for severely emotionally disturbed children in New Castle DE for the past five years. In addition he continues to play semi-pro baseball and in 1978 won the Delaware batting championship with a .439 average. He resides at 19 Russell Road, New Castle DE 19720.

MAURY A. MACHT covered the 1980 session of the Maryland General Assembly in Annapolis for the Herald-Mail newspapers in Hagerstown MD. He previously covered the 1978 and 1979 sessions.

WILLIAM D. HENDRICKSON joined the instructional development division at the University of Texas Health Science Center in March 1978. From 1973 to 1978, he was an assistant professor of medical education at the University of Illinois Medical Center. He resides with his wife and two sons at 6707 Sunlight Drive, San Antonio TX 78238.

PAMELA K. OTSTOT is a senior tax accountant with Price Waterhouse & Company, San Francisco CA. She was previously employed by Arthur Andersen & Co. Her new address is 695 John Muir Drive, #711, San Francisco CA 94132.

1972

KATHY HODGES is teaching English as a second language at the University of Hawaii. She resides at 3030 Hibiscus Drive, Honolulu HI 96815.

WESLEY T. VIETS has been promoted to assistant logistics manager, ordnance engineering division, FMC Corporation. He and his wife reside at 3753 Electra Avenue, San Jose CA 95118.

Dr. LEONARD C. HYMES is a Fellow in Pediatric Nephrology at Moffet Hospital, University of California, San Francisco Medical Center. He resides at 46 Idora Avenue, San Francisco CA 94127.

Capt. and Mrs. BLAIR ELLIS

(MARY ROBERTACCIO '71) and daughter Meg returned to the states in July after a 3½ year assignment with the Air Force in Spain. Blair is an F-4 pilot and is now with a squadron in South Korea on a one-year remote tour. Mary and Meg are residing in Vernon AL.

AUSTIN BURKE was recognized by the Scranton Chamber of Commerce at the October Veteran Awards Dinner. He was the recent recipient of a Presidential certificate for outstanding community achievement by Vietnam ERA veterans. Mr. Burke is the director, economic development of the Greater Scranton Chamber of Commerce. He resides with his wife and three children in Scranton PA.

1973

MICHAEL R. SILVERMAN, manager of Radio Shack 1958, Oldtowne, Alexandria VA, was number one in manager sales for the 1979 fiscal year for his district. He was manager of the month four separate times which is a record. At the annual Radio Shack convention held in Atlanta, Michael was named "W" store manager of the year for the Norfolk region, in addition to being named to the President's Club Award for having managed the best company store in the Norfolk region for 1979.

RICHARD W. PURNELL has been elected an assistant vice president by the board of directors



of BancOhio National Bank. He has been with the bank since 1978, serving as an international lending officer.

GARY FEBBO has joined *The Post-Standard*, Syracuse NY, as a staff reporter for Neighbors West. He previously was a reporter for

the Bethlehem PA *Globes-Times*, and a regional correspondent for the Thomson Newspapers in Washington DC.

JAMES S. BUENTE, Harrisburg PA, has been named Pennsylvania governmental affairs representative for the National Federation of Independent Business. He was previously with the Pennsylvania Chamber of Commerce.

NEIL ROSS is teaching modern art at the University of Massachusetts, and will complete his master's degree in art history in May at the university.

MARY-HOLLIS LUBIN is working in the sales department for CyRo Industries, Clifton NJ at their Stamford CT research facility.

ANNE HART SMITH is director of the direct mail program at the Johns Hopkins Hospital. She married Kerry W. Smith in March 1978 and they recently moved to 3901 Woodlea Avenue, Baltimore MD 21206.

LOUIS J. GROSSMAN has been appointed legislative and public information aide for the Appropriations Committee of the Pennsylvania House of Representatives. He previously was public information director of Cheltenham Township, Montgomery County. His new address is Towne House Apartments #2001, 660 Boas Street, Harrisburg PA 17102.

During September, FRANK E. McGAHEY III led church people on a two weeks' tour to the Holy Lands. He resides in LaSalle MI.

DAVID ALAN FRIEDMAN is a law clerk to Judge Oscar Bortner in the Bucks County Court of Common Pleas, Doylestown PA. He resides at 1811 Makefield Road, Yardley PA 19067.

MARJORIE ZOLL VAN VLACK has been appointed to the 1979 listing of Outstanding Young Women of America, an organization for business women. She and her husband reside at 148 Woodbridge Drive, Harrisburg PA 17110.

JONATHAN SCHAEFER moved to Lexington VA early in the year where he has joined a cooperative farm community. He previously worked for the Civil Aeronautics Board in Washington DC.

1974

ROBERT L. GARBER has opened his office for the general practice of law at 230 Union Trust

Building, Pittsburgh PA 15219. His wife is an attorney with Joy Manufacturing Corp. The Garbers have moved to 154 Race Street, Pittsburgh PA 15218.

BARBARA STIKELEATHER received a master's degree of international management from the American Graduate School of International Management, Glendale AZ. She is employed as a management trainee in the international division of The Stanley Works, New Britain CT. Her new address is 283 Main Street, #C-3, Farmington CT 06032.

FRANCES CONROY appeared in August in a major New York City theatrical production of "Othello." She played Desdemona opposite Richard Dreyfuss as Iago. She is a graduate of the Julliard School of Drama and was a member of The Acting Company, a touring repertory company. She has appeared on Broadway in "A Voice of My Own," and has been acclaimed a "new face" on the New York scene by the *New York Times*.

ANDREW R. and JENNIFER SMYTH JILLSON with their son, Jeremy Andrew born July 4, 1978, are residing at 81 Central Street, Ipswich MA 01938. Jennifer received Massachusetts certification to teach secondary English in 1977. Andrew received a master of divinity degree from Gordon Conwell Theological Seminary in May 1978. He is currently the front office manager of the Radisson Ferncroft Hotel, Danvers MA.

DANIEL R. GILBERT, JR. has been promoted to manager, terminals and small business systems pricing for National Cash Register's U.S. data processing division. He resides at 4913 Woodman Park Drive, #8, Dayton OH 45432.

JANE A. MOFFITT has joined the food and drug section of the legal department of Miles Labora-

tories, Inc. as an attorney. Prior to joining Miles, Jane was an associate attorney at Butz, Hudders and Tallman, Allentown PA. She received her master of law degree from the New York University School of Law. Jane resides at 2317 Coachmans Trail, South Bend IN.

FREDERICK S. STOVER, Maryland Heights MO, received a Ph.D. in analytical chemistry in June from the University of North Carolina. He is employed in the corporate research labs, Monsanto Company, St. Louis MO.

CYNDI McNICHOLAS is a first year student at Villanova School of Law. Her new address is 345 Avon Road, #173, Devon PA 19333.

DAMON S. BLANK has been promoted to director of Y.O.U., Inc, Intensive Adolescent Services, a community based treatment program for disturbed adolescents and their families. He completed a year of Gestalt therapy training with the Gestalt Institute of New England. He resides at 66 Walnut Street, Natick MA 01760.

HARRY DeLONG LEWIS is actively engaged in the general practice of law with offices in the J. C. Bradford Building, Suite 1108, Nashville TN 37219.

Since receiving a master's degree in social work in 1977, ELISSA AKS has been serving as program director for the Philadelphia Jewish Y's and Centers Multi-Service Center. HENRY SHREIBMAN has lectured on Judaic topics and performed pantomime on several occasions at the Center. In January, Elissa left for the W.U.J.S. Institute in Israel where she is studying Hebrew and taking Judaic studies courses. Her address is The W.U.J.S. Institute, International Graduate Center for Hebrew and Jewish Studies, Arad, Israel.

1975

GILBERT J. NEGRETE, JR. received a law degree from the Michigan Law School. He is associated with Vorys, Sater, Seymour and Pease, a law firm in Columbus OH, where he and his wife reside.

KATHARINE E. BACHMAN represented the College at the October Centennial Convocation at Northfield Mount Hermon. Kathy is an associate of the law firm of



New Editor

DEB CLINE '75 has been promoted to city editor of the Carlisle Evening Sentinel. She joined the paper as a reporter in 1975 and was named associate editor in January 1978. Last year Deb won a first-place feature writing award from the Pennsylvania Newspaper Publishers Association for a story on child abuse.

Hale and Door, Boston MA, and serves as a member of the Alumni Council of the General Alumni Association of the College.

LISA ROSSBACHER RHODES received an M.A. from Princeton University in June and is now a doctoral candidate in the department of geological sciences at Princeton and is spending the year doing research in Southern California. Her husband teaches geology at Whittier College. Their address is 13745 East Via del Palma, #27, Whittier CA 90602.

GERALD F. EHRlich was commissioned in January 1979 as a captain in the United States Army, Judge Advocate General's Corps. He is currently stationed at the U. S. Army Engineer Center, Fort Belvoir VA, where he serves as assistant staff judge advocate. He received his law degree in May 1978 from Rutgers University Law School and was admitted to the Pennsylvania and New Jersey State Bars. His address is 3909 El Soneta Place, Alexandria VA 22309.

DENNIS G. O'NEILL recently became senior financial analyst with the Johns Hopkins Hospital in the operations planning and budgets department. His wife is assistant marketing manager at the C & P Telephone Company.

They reside at 9307 Montego Avenue, Baltimore MD 21234.

GARY HILLER, Ephrata PA, has been appointed a social worker at Friendship Community, a group home near Lititz PA, which enrolls 12 mentally-handicapped persons for special training. Gary received a master's degree in psychology from the Rosemead (CA) Graduate School of Psychology.

MIKE McNULTY is attending the J. L. Kellogg Graduate School of Management, Northwestern University. His address is 1535 West Highland Avenue, Chicago IL 60660.

ROBERT E. PEASE is a second-year student at Golden Gate University Law School, San Francisco. His new address is 2530 Regent Street, Berkeley CA 04704.

DEBORAH A. HUGHES is now associated with Walter K. Swartzkopf, Jr. in the general practice of law. She received her J.D. in June from the Dickinson School of Law. Her new address is 46 North 34th Street, Harrisburg PA 17109

EUGENE H. ROOS, D.O. has moved to 4700 South Lake Park Avenue, #2605, Chicago IL 60615. He plans to do a residency in radiology in the Philadelphia area later this year.

BARBARA BALLIET is completing a master's degree in history and archival management at New York University. She resides at 99 Claremont Avenue, New York NY 10027.

KERRY B. FISHER received a J.D. degree in May from the University of Maryland School of Law and had been admitted to the Maryland State Bar Association. He and his wife are residing in the Roland Park area of Baltimore.

NANCY J. ROSE is teaching French at the Pomfret School, Norwich CT. She is a candidate for a master's degree at Middlebury College and previously taught at the Kents Hill School.

1976

RICHARD and MARYSUE EPPLEY ENGELMANN with their daughter, Jennifer Lynn, are living in Boulder CO. Richard is working for IBM and MarySue is an R.N. working at Boulder Psychiatric Institute.

R. STEVEN SHISLER is an English teacher and assistant lacrosse coach at George School, New-



town PA. In addition to teaching, Steve is faculty advisor to a group of students engaged in recreational therapy with psychiatric patients at the Philadelphia State Hospital.

NANCY WHITTIER DUDLEY is employed by a Japanese film company which is currently co-producing James Clavell's *Shogun* with Paramount. Nancy resides at 1210 North Orange Grove Avenue, #6, West Hollywood CA 90046.

MARK D. TEICH is president of M & T Industrial Plumbing and Heating Company, New York NY. He received an M.B.A. in finance from New York University. His address is 210 East 15th Street, #12-K, New York NY 10003.

PATRICIA L. WINTERS is working as production director and evening announcer at WUSL-FM, Philadelphia. She recently moved to 4000 Gypsy Lane #631, Philadelphia PA 19144.

KEN BERMAN graduated in June from the University of Chicago Law School and is currently associated with the New York law firm of Cahill, Gordon & Reindel. Ken resides at 209 Columbus Avenue, #B, New York NY 10023.

BILL CRAIG is working toward a master of divinity degree at Union Theological Seminary in New York City. He resides at 99 Claremont Avenue, New York NY 10027.

WILHELM L. GRUSZECKI, Scranton PA, has passed the Pennsylvania Bar Examination and has been admitted to practice in the state. He received his J.D. degree from Drake University Law School.

THOMAS L. KALARIS was recently appointed an assistant treasurer of Morgan Guaranty Trust Company, New York NY. He is in the municipal bond department. Tom joined Morgan in 1978.

1977

JEFFERY L. DEZEN has been appointed a visiting lecturer in English at Frostburg (MD) State College. He completed his M.A. in English during the summer at Pennsylvania State University.

THOMAS LOGUE is a first year student at Duke University Law School. His address is Chapel Towers 19-C, 1315 Morrene Road, Durham NC 27705.

NEAL LIPSITZ is attending

Boston College, working for a master's degree in counseling psychology. His address is 140 Warren Street, Newton Centre MA 02159.

ELLEN CALDWELL McCOMMON is an account executive for advertising sales with WKBO radio station in Harrisburg PA.

After driving cross-country and into Mexico, CHRISTI WHITE began classes in January at the American Graduate School of International Management, Glendale AZ. She previously worked at the American Petroleum Institute, Washington DC.

1978

ERIKA PAGE WALTERS is enrolled in the Graduate School of Business Administration at New York University. Her plans are to specialize in marketing or finance with International Business. During the 1978-79 academic year, Erika was enrolled in the MSBA program at Bucknell University. Prior to that she was a manager-trainee with Agway Petroleum Corporation. Her address is 186 Prince Street, #1, New York NY 10012.

LELAND R. BERGER is a first year student at the Northwestern School of Law of Lewis and Clark College, Portland OR. Lee's new address is 1410 S.W. Taylor Street, #401, Portland OR 97205.

ELAINE M. DRAKE is employed at Schering-Plough Pharmaceuticals, where she was recently promoted to technical specialist in quality control. She is also enrolled part-time at Seton Hall University working on a master's degree in chemistry and business. Elaine resides in Belleville NJ.

BETTE J. JACQUES and JAMES D. CHAMBERS are enrolled at American Graduate School of International Management, Glendale AZ.

ELIZABETH M. PINCUS, Philadelphia PA, graduated from the Institute for Paralegal Training. She is employed with the firm of Wolf, Block, Shorr & Solis-Cohen.

RICHARD T. MAGSAM received an M.B.A. from Rutgers Graduate School of Business Administration. He is now working with Peat, Marwick, Mitchell & Company, an international public accounting firm. He and his wife reside in Kearny NJ.

ERIC S. EVANS is an auditor for the firm of Laventhol and Hor-

wath, Philadelphia certified public accountants. He resides at 377 Green Valley Road, Langhorne PA.

1979

2LT KATHY DiCICCO completed 12-week Signal Officer Basic Course in Atlanta GA and is presently stationed at Fort Riley KS with the 1st Division as a platoon leader in the 121st Signal Battalion. Her new address is Box 19, Building 481, Fort Riley KS 66442.

TOR M. HEPBURN is enrolled at American Graduate School of International Management, Glendale AZ.

MARIE A. VALDÉS is a first year student at the Illinois College of Podiatric Medicine.

CRAIG EVANS, Langhorne PA, has joined the *Courier Times* sports department.

ERIC BEDELL is teaching Latin at Blair Academy, Blairstown NJ.

CATHERINE MERLO is a music instructor at the Tower School, Marblehead MA.

MARK MINTZ is a first year medical student at Rutgers Medical School, Piscataway NJ.

1980

PETER D. ENGELMANN is completing his senior year at the University of Colorado, where he is studying psychology.

Obituaries

1908 — Mrs. LAURA DIX SHILLING, a resident of the Methodist Country House, Wilmington DE, died recently at the age of 96 years. She was the widow of JOHN SHILLING. She was a member of Chi Omega sorority. Several sons survive.

1911 — Commander CHARLES H. HASTINGS, St. Petersburg FL, died on October 15 at the age of 93. He was a member of Beta Theta Pi fraternity. His widow survives him.

1920 — The Alumni Office has been notified of the death of Mrs. EDNA MORGAN KESSLER, Barnesville PA, on November 15.

1929 — Dr. W. DONALD WHETSEL, retired minister and superintendent of the Grove City and Franklin District of the United Methodist Church, died

on September 28 at United Community Hospital in Grove City PA. His clerical career spanned 40 years and included pastorates in six western Pennsylvania churches and a World War II tour as an Army chaplain in Europe. In addition to being a district superintendent for the church from 1965 until retirement in 1971, he was also a minister of visitation at the Grace United Methodist Church, Grove City. He received his B.D. degree from Garrett Seminary and an S.T.D. from Burton Seminary. Dr. Whetsel was a life member of the General Alumni Association, a Mason, and served on the board of ministerial training and qualifications and was a member of the board of evangelism and board of temperance. He is survived by his wife, a daughter, a brother and a grandson.

1931 — The Alumni Office has been notified of the death of HENRY S. HUTTON, Vista CA, on October 5.

1933 — GERTRUDE A. YEAGER died on September 17 at River View Hospital, Red Bank NJ, at the age of 68. She was director of recreation at the Community Center, Fort Monmouth NJ. She was a member of Phi Mu sorority. She is survived by four brothers and three sisters.

1933 — WILLIAM S. JOHNSON, Allentown PA, died on August 23 in St. Luke's Hospital from injuries received in an automobile accident. Prior to his retirement in 1976, he was an environmental health engineer at Bethlehem Steel Corporation, a position Mr. Johnson held since 1970. He began his career with Bethlehem Steel in 1946 as an industrial hygienist in the medical section. Mr. Johnson was previously a chemist with the Pennsylvania State Liquor Control Board and as an industrial hygienist for the Pennsylvania Department of Health. A life member of the General Alumni Association, he was a member of Phi Kappa Sigma fraternity, St. Andrews Episcopal Church, the Bethlehem Steel Club and a Fellow of the American Industrial Hygienists. In addition, Mr. Johnson was the author of several publications. A memorial service was held on October 23 at St. Andrews Episcopal Church in Bethlehem. He is survived by his wife, two

daughters, a sister and three grandchildren.

1934 — The Alumni Office has been notified of the death of DREW A. SHROAD, Harrisburg PA, on July 22.

1934 — GRAFFIUS A. BARR, Lewistown PA, died at the Mountain View Hospital, State College PA, on August 28 at the age of 70. He was the import brokerage manager of Botor American Corporation. He was a member of Phi Kappa Sigma fraternity. Mrs. Barr survives her husband.

1935 — PAUL A. KOONTZ, an attorney of Bedford PA and father of SARA K. CHASE '62, died on December 5 in the Bedford Hospital at the age of 66. A graduate of the Dickinson School of Law, he was secretary of the Law School's board of trustees, having served as a member of the board since 1942. Mr. Koontz served two years as president of the Bedford County Bar Association and as a district attorney for eight years. Additional survivors include his wife, two sons, a daughter and his brother, CHARLES '36.

1936 — G. THURSTON LYNCH, Buffalo TX, died on June 20 at the age of 66. Prior to his retirement in 1974 he was president of Fidelidade S/A-Empresa de Armazens Gerais, Sao Paulo, Brazil. He was a member of Kappa Sigma fraternity. Survivors include his widow and a son and a daughter.

1938 — HENRY C. REMSBERG, Carlisle PA, died on August 28 at the Carlisle Hospital from injuries suffered in a bicycle accident. He retired this past spring after spending 33 years in the research and development department of Carlisle Tire and Rubber Company (see August 1979 issue under Personal Mention). In March 1979 he was given a special award by the rubber division of the American Chemical Society for his help in completing the newest comprehensive publication for the industry, *Science and*

Technology of Rubber. In addition to serving as a national director from the Philadelphia Rubber Group to the rubber Division of ACS, he worked as secretary-treasurer, vice chairman, and chairman of the rubber group. Mr. Remsberg was a member of the National Sanitation Foundation and the American Society of Testing Methods. He was also a member of Kappa Sigma fraternity. He previously taught school in Carlisle and Lansford PA, served as a part-time instructor of instrumental music at Dickinson from 1946 to 1956, was a member and former director of the Carlisle town band and a director of the Carlisle High School Band for three years, was founder and director of the Philadelphia "Rubber Band," a member of the Harrisburg Moose band, and a member and conductor of "The Encores" dance band. Much of his leisure time was spent raising vegetables, ornamental shrubs, and 25 varieties of azaleas. He is survived by his wife, a daughter, a son, a sister, and two grandchildren.

1940 — The Alumni Office has been informed of the death of ROBERT C. DIETZ, Mechanicsburg PA.

1942 — CAROLYN LODER WASHABAUGH, wife of EDGAR C. WASHABAUGH '41, Waynesboro PA, died on September 21 from injuries suffered in an automobile accident near her home. She formerly taught school at Lower Merion High School in suburban Philadelphia and at Bridgeton (NJ) High School. A member of Chi Omega sorority, she was a former member of the Greenwich Tea Burning Chapter, Daughters of the American Revolution, the American Association of University Women and the First United Methodist Church. In addition to her husband, she is survived by two daughters and her sister, Dr. KATHERINE LODER '34.

1945 — WILLIAM J. HANLEY, JR., Wilmington DE, died on March 21 at the age of 60. Prior to his retirement in 1974 he was a vice president of the Bank of Delaware. He is survived by his wife and daughter.

1950 — Dr. JOYCE ZIEGLER PEARSON, Wilmington DE, died on September 25 after a three year illness of cancer in the Wilmington Medical Center at the age of 50. She had been a hospital patient for three days. She received her doctor of medicine degree in 1954 and interned at the University of Illinois Research and Education Hospital. Dr. Pearson entered medical practice in Wilmington in 1958 and in 1962 became clinical assistant at Delaware Hospital. During 1965-67 she worked at a mental hygiene clinic in Charlotte NC and, returning to Wilmington in 1967, worked in the same type clinic. In 1968, Dr. Pearson helped establish the alcoholism clinic, where she worked until her death, which grew from a part-time outpatient clinic to a full-scale operation with its own building and a staff of four full-time persons. Although her illness curtailed her activity, Dr. Pearson played an active role in the clinic until just a few months ago, winning the praise of her associates for her dedicated service that continued despite her illness. A life member of the General Alumni Association, she was a member of Phi

Mu sorority. Dr. Pearson was elected to the American Academy of General Practice in 1968 and was a member of the American Medical Association and the New Castle County (DE) Medical Association. She was listed in the *Who's Who of American Women*. She is survived by her husband, two sons, a daughter, her parents and a brother.

1950 — ARTHUR C. FLANDREAU, husband of JANET ELDER and father of LAURA '74, Berea KY, died suddenly from cancer on September 24 at the age of 52. At the time of his death, he was head librarian at Berea College. From 1955 to 1961, Mr. Flandreau was reference librarian with the rank of assistant professor at Dickinson. During 1963-1970, he was the librarian at Concord College, Athens WV, leaving there to become library director at Richard Stockton State College, Galloway Township NJ. Mr. Flandreau joined the Berea College Library staff in 1974. In addition to his wife and daughter, he is survived by two other daughters and his mother.

1952 — JOHN PEJOKOVICH, Cheverly MD, died on July 12 at the age of 53. A graduate of Georgetown University Law School, he was with the Internal Revenue Service. He is survived by his wife and two children.

1952 — VIRGINIA ARMSTRONG MATHER, wife of FRANCIS MATHER '50 and mother of CATHY '77, died on October 4 in Devon PA. She was a member of Chi Omega sorority. Additional survivors are her mother and daughter, Beth.



The General Alumni Association

President

Andrew C. Hecker, Jr. '65

Secretary

Lester T. Etter '34

Vice President

Rosalyn K. Robinson '68

Treasurer

George Shuman, Jr. '37

Alumni Secretary

George F. Stehley '62

ALUMNI TRUSTEES

Dr. John H. Harris '48
Michigan State University
4800 Mohican Lane
Okemos MI 48864

John J. Curley, Jr. '60
5908 Osceola Road
Bethesda MD 20016
Term expires in 1982

Mrs. Mary Stuart Specht '57
135 Conway Street
Carlisle 17013
Term expires in 1981

Dr. Benjamin D. James '34
355 Graham Street
Carlisle 17013
Term expires in 1983

ALUMNI COUNCIL

Term expires in 1980

Dorothy Harpster '28
343-A Burd Street
Shippensburg 17257

Mrs. Lenore S. Caldwell '49
500 Park Terrace
Harrisburg 17111

Charles W. Howell '51
249 Walnut Street
Carlisle 17013

Bonnie D. Menaker, Esq. '61
4707 North Galen Road
Harrisburg 17110

Mrs. Barbara R. Strite '61
289 Oak Lane
Gettysburg 17325

James F. Jordan, Esq. '63
10236 Lawyers Road
Vienna VA 22180

Andrew C. Hecker, Jr., Esq. '65
Hecker and Maginnis
1412 Penn Center Plaza
Philadelphia 19102

John C. Goodchild, Jr. '67
120 Clover Hill Lane
Strafford, Wayne 19087

Rosalyn K. Robinson, Esq., '68
529 Glen Echo Road
Philadelphia 19119

James Gerlach '77
507-C South West Street
Carlisle 17013

Term expires in 1981

Lester T. Etter '34
717 Noble Drive
Carlisle 17013

Herschel E. Shortlidge '34
905 Mason Avenue
Drexel Hill 19026

Mrs. Margaret B. Burtner '41
10800 Gainsborough Road
Potomac MD 20854

Mrs. Sally S. Small '51
5 East Court Boulevard
West Lawn 19609

John E. Colburn '52
2141 Kimberwyck Road
Media 19063

J. Bruce McKinney '59
139 Elm Avenue
Hershey 17033

Eric Drake '70
129 Wilson Street
Carlisle 17013

David R. Witwer '71
175 East Delaware Street, #8006
Chicago IL 60611

Katharine E. Bachman '75
70 Line Street, Apt. 2
Somerville MA 02143

Richard A. Burnett '78
5500 Friendship Boulevard
Chevy Chase MD 20015

Term expires in 1982

Mrs. Ruth S. Spangler '35
3725 Elder Road
Harrisburg 17111

Austin Bittle '39
13943 Jarrettsville Pike
Phoenix MD 21131

Ellis E. Stern, Jr. '49
Box 788, 1207 Scott Drive
Coatesville 19320

Mrs. Rosalie E. Dunkle '50
3609 Canterbury Road
Oxford Court
Harrisburg 17109

Mrs. Virginia M. Rahal '52
328 West Willow Street
Carlisle 17013

Dr. John M. Kohlmeier '56
475 Voltz Road
Northbrook IL 60062

William Gormly '63
5532 East Sapphire Lane
Paradise Valley AZ 85253

Edmund G. Myers, Esq. '68
2013 Yale Avenue
Camp Hill 17011

Patricia A. Love '74
5303-A Manayunk Road
Harrisburg 17109

Jace J. Wagner '79
914 Delaware Avenue
Bethlehem 18015

Life Membership: A Life Membership in the General Alumni Association is available at \$25. Gifts are tax-deductible and are used to support *The Dickinson Alumnus*. Send Check to the Alumni Office, Dickinson College, Carlisle, PA 17013.

Dickinson Alumni Clubs: Information on Dickinson Alumni Clubs, which are located in many areas across the country, may be obtained by writing to the Alumni Secretary, Dickinson College, Carlisle, PA 17013.

Please note new computer mailing label. To correct errors, notify editor.

