

LGBT History Project of the LGBT Center of Central PA

**Located at Dickinson College
Archives & Special Collections**

<http://archives.dickinson.edu/>

Documents Online

Title: *Lavender Letter (Harrisburg, PA)*

Date: January 2002

Location: LGBT-009 Lavender Letter Collection

Contact:

LGBT History Project
Archives & Special Collections
Waidner-Spahr Library
Dickinson College
P.O. Box 1773
Carlisle, PA 17013

717-245-1399

archives@dickinson.edu

P.O. BOX 266
MECHANICSBURG, PA
17055

LAVENDER LETTER

PHONE:
(717) 766-0602

E-MAIL

LAVLET4WOMYN@AOL.COM

Volume 20 No. 1

A Calender of Events, for and by Womyn

January, 2002

ACTIVITIES

TUESDAY, JANUARY 1 NEW YEAR'S DAY

The Lavender Letter would like to wish you a very Happy and Joyous New Year!

FRIDAY, JANUARY 11

7 pm...Lancaster Ladies Night Out meets for good food with good folks! Singles and couples welcome! Call Shirley at (717) 560-6817, or e-mail snoac@aol.com for reservations.

SUNDAY, JANUARY 13

1 pm...Join us for a fun filled afternoon of bowling! For details please call (717) 766-0602.

SUNDAY, JANUARY 13

4 pm...Lebanon County Lesbians Social Group and Potluck. Call Marie at (717) 865-6944 for more information.

MONDAY, JANUARY 14

7 pm...Open House/First rehearsal of the Central Pennsylvania Womyn's Chorus. Find out about our exciting plans for our Spring concert, Singing For Our Lives. Discover the joy of singing with women - find out how much fun Monday nights can be! St. John's Lutheran Church, 44 W. Main St. in Shiremanstown. For more info, email info@cpwchorus.org, or call President Lucy at (717) 938-5051, or see our website at www.cpwchorus.org.

TUESDAY, JANUARY 15

7 pm...There will be a Pride Committee meeting at the Switchboard office, 915 N. 2nd St. Hbg. If you are interested in helping with PrideFest this year, please come to this meeting. If you need more information, please call (717) 234-0328, or e-mail info@harrisburgpride.org.

WEDNESDAY, JANUARY 16

7 pm...Gay and Lesbian Switchboard of Harrisburg monthly meeting. If you are interested in working with GLSH in it's continuing stand for the community, I encourage you to get involved. For more information call (717) 234-0328, or e-mail info@harrisburgpride.org.

FRIDAY AND SATURDAY

JANUARY 18 & 19

Theater of the Seventh Sister presents Heart Lights by Marie Winger. The time-honored art of story telling seeks to awaken that magic that lies within each of us. In Heart Lights, the redemptive power of romantic love, our search for personal happiness and fulfillment, and the dark places that lie within each of us are explored, through 3 theme-paired stories adapted from folklore. Experience story as it was meant to be experienced, from mouth to ear, and heart to heart! Admission is \$10. Please call (717) 396-7764 for times and tickets. Fondersmith Auditorium, Trinity Lutheran Church, 31 S. Duke St., Lancaster.

FRIDAY, JANUARY 18

8 pm...Dar Williams in concert at the Whitaker Center's Sunoco Performance Theater. Make plans to see Harrisburg's favorite singer/songwriter! For tickets call (717) 214-ARTS(2787).

SUNDAY, JANUARY 20

1 pm...Lesbian and Gay Parents Group first meeting! Looking for parents with children under the age of 18, and those considering adoption, to form a group to meet monthly. Partners are welcome! Please call (717) 766-0602 for details.

SATURDAY, JANUARY 26

5 pm...Harrisburg Ladies Night Out. Join us for good food and a fun night out! Singles and couples are welcome! Call (717) 766-0602, or e-mail Lavlet4womyn@aol.com by Wednesday, January 23 for reservations.

SUNDAY, JANUARY 27

11 am...Lesbian Alliance of South Central PA. Brunch at Borders in York. Call (717) 755-3643 for directions.

Upcoming Events....

SATURDAY, FEBRUARY 16

6 pm...Lesbian Alliance of South Central PA. The potluck for Febuary will be in the east York area. Call (717) 840-1673 for directions.

SATURDAY, MARCH 16

5 pm...Lesbian Alliance of South Central PA. The potluck for March will be in the Dover area. Call (717) 292-5998 for directions.

SATURDAY, MARCH 30

8 pm...Pride presents the 2nd Annual Comedy Jam live at the Whitaker Center. Laugh along with comedians Michele Balan and Jason Stuart! Tickets are \$22.50 and \$27.50. For tickets call THE BOX at (717) 214-ARTS(2787).

SATURDAY, JULY 27

Noon to 7 pm...Pride presents the 12th Annual Pride Festival! Mark your calendars now!

SATURDAY, AUGUST 10

Gay Day at Knoebels Park in Elysburg, PA. Mark your calendars now for this fun event!

Darla M. Huber Financial Consultant

Specializing in investment management and retirement planning for our community, Darla offers a full range of financial planning services and products unique to your individual needs and preferences.

Contact Darla for a free consultation at:
717-731-4400 or 800-622-7200,
email: dhuber@jimsonline.com

Janney Montgomery Scott LLC
20 Erford Road, Suite 315, Lemoyne, PA 17043
Members: NYSE • NASD • SIPC

Your future in focus.



Metropolitan Community Church
of the Spirit

2973 Jefferson Street
Harrisburg, PA 17110

Services: Sunday:

8:30 a.m. 10:30 a.m. & 7:00 p.m.

E-mail: mccofthespirit@cs.com

Pastor Eva O'Diam

(717) 236-7387

**Earth Mother of
Laussel**

This powerful relief from the caves at Laussel is an inspiring reminder of the enduring creativity of women. We have recreated her as a deeply carved wall plaque of artstone 7" h. **Special: \$32.50 ppd.**

Or, catalog of handcrafted Goddesses \$1.00 from;

Grand Adventure

P.O. Box 369, Franklinville, NJ 08322

e-mail: grandadven@aol.com • (856) 694-2037



Spirituality

WORSHIP SERVICES

...**DIGNITY OF CENTRAL PA** meets the 1st Sun. of every month at 6pm, at the Friends Meeting House (lower level), 6th & Herr Sts. Harrisburg, for a potluck dinner and discussion. Fellowship for gay and lesbian Catholics, and supportive non-Catholics. All are welcome. Call (717) 652-7683.

...**MCC OF THE SPIRIT**, 2973 Jefferson St., Hbg. Every Sunday 10:30 am & 7:00 pm. Call 236-7387 for information. We offer Christian educational sessions that nurture the whole person, call for details and special events. **Website: www.mccofthespirit.org**.

Quality custom jewelry
designed and crafted by
JUDE SHARP
working in
gold and platinum



You can see her work at www.jasharp.com
334 N. Queen St. Lancaster PA 17603 717 295-9661

Hours: T, Th, Fr 11 - 5, Sat 11 - 4
and by appointment

...**UNITARIAN UNIVERSALISTS OF THE CUMBERLAND VALLEY**, Sundays, 10:30 a.m. at the Meeting House, 2 Forge Road in Boiling Springs, PA 17007. Children's program runs concurrently. Fully accessible. Rev. Judy Welles and Rev. Duane Fickeisen, ministers. For info., call 717/249-8944 or write: P.O. Box 207, Boiling Springs, PA 17007. Web site: www.uucv.org

...**UNITARIAN UNIVERSALIST CHURCH OF LANCASTER**, Sunday, 9am & 11am. Rev. M. Susan Milnor. 538 W. Chestnut St., Lancaster. (717) 393-1733. E-mail: UUCL@epix.net. Website: <http://members.tripod.com/~uulanpcpa/index.htm>.

...**UNITARIAN UNIVERSALIST CONGREGATION OF YORK**, 925 South George St. York, 17403. (717) 845-8212. Services Sunday 10AM. Rev. Robert Renjilian, Childcare and religious education for youth provided. Welcoming Congregation.

...**UNITY CENTER FOR SPIRITUAL GROWTH**. 4695 Charles Rd., Mechanicsburg. (Behind Trindle Bowling Alley on Trindle Rd.) Services: Sundays 9am & 11am. (717) 691-0300 or e-mail: unity@bbimaging.com. Unity is a culturally diverse spiritual community, promoting positive life transformation and recognizing that all people are one in God. Website: www.unitychurchharrisburg.com.

...**VISION OF HOPE MCC**, 130 E. Main St. Mountville, PA 17554. Services: Sunday at 10:30am & 7pm. Morning Children's Sunday School. Call (717) 285-9070. E-mail: REVDCOGGIN@aol.com.

...**UNITARIAN CHURCH OF HARRISBURG** Sundays 10:30 am 1280 Clover Lane, Harrisburg, PA 1717-564-4761. We are a liberally religious "Welcoming Congregation". Our Interweave Committee promotes acceptance and affirmation of GLBT concerns. Please join us. E-mail: uch@paonline.com Website: <http://www.paonline.com/uchuaa/>.

deborah swanger
photography

debbieswanger@aol.com
(717)560-1335

**COMPASSIONATE AND CREATIVE COUNSELING
WITH COUPLES AND INDIVIDUALS**



**Individual &
Family Services**

Katie Dunton, MSW, LSW

Therapist

(717) 737-7844

Fax: (717) 763-7844

115 South St. John Drive

Camp Hill, PA 17011

**SUPPORT GROUPS FORMING -- CALL THE OFFICE
FOR DETAILS**

CENTER PIECE

LAVENDER LETTER

January, 2002

Support Groups...

"DON'T BE A BOOB - GET A BOSOM BUDDY" Are you concerned about the Procedure? Are you concerned about going alone? A volunteer network of 'BUDDIES' is being organized to accompany women who know the importance of a mammogram yet fear the mammogram procedure whether is the first or the 100th.

We are looking for participants who would like to have a 'BUDDY' and for those who would like to be 'BUDDIES'. Please contact Natalie Damrauer at 540-7725 or email her at LoonSng@aol.com for more information, to request a BUDDY or to volunteer to be a BUDDY!

...NOW, York Chapter, (National Organization for Women) meets on the 3rd Wed. of odd-numbered months at the YWCA, E. Market St., at 7:30pm. and on the 3rd Saturday of even-numbered months at various locations at 10am. Call Cindy at (717) 848-9142 or Janice at (717) 259-6092 for info/directions & location of the Saturday meeting.

... PFLAG York meets at 750 Kelly Dr. (the former Lutheran Home building) at 7pm on the first Tues. of the month. Call Don and Pat (717) 843-3793 or Charles and Judy at (717) 846-7633 for directions or to be placed on the mailing list.

...ENCOREplus was established in 1994 to provide free clinical breast exams, Pap test and mammograms to women over the age of 40 who have annual incomes below \$15,448 (add \$5,365 for each additional dependent). Clinical breast exams and Pap test are done at Sadler Clinic, 117 N. Hanover St, Carlisle, by a nurse-practitioner. Mammograms are provided by Carlisle Imaging at their Medical Arts Building location, Wilson St. Carlisle. Interested women should call ENCORE plus at the YWCA of Carlisle, 243-3818 or e-mail, diantz@ywcaof.carlisle.org.

...NETWORK and FORUM for lesbians of Catholic heritage. A Web Site of the "Conference for Catholic Lesbians" (CCL) is now up and running. CCL was organized in 1982, published a monthly newspaper, "Images" and held many national conferences in different parts of the country. IF YOU ARE SEEKING...to connect with others on a spiritual journey for strength and support...to learn how other women celebrate being Catholic and lesbian...to express what's on your mind and in your heart to others who have shared your experience and understand...please join us at catholiclesbians.org. For other information from a member in the Harrisburg area, you can send email to "cathles RU12@aol.com" or leave a message in the CCL "Guestbook".

...The Unity Center for Spiritual Growth has an Alternative Lifestyles Support Group that meets every 2nd and 4th Friday evening of the month. We start at 7:00 PM at the Unity Center for Spiritual Growth on Charles Street in Mechanicsburg, PA, which is behind the Trindle Bowling Alley. This is a spiritual as well as a social group. Interested folks can contact the church at (717) 691-0300, or Sandy at sansmagic@aol.com.

...Common Roads, formerly known as BiGLYAH, is a support group for teens & young adults in the Harrisburg, PA area who need a place to fit in, a place where their sexuality will not be held against them. The group consists of many different people from ages 14-24 and is led by multiple facilitators. We meet every Friday to talk about our problems, our good times, and to simply have fun! For more information visit our website: <http://www.commonroads.org>.

...PFLAG Central Pennsylvania meets monthly. For more information e-mail: pflagcenpa@yahoo.com, or call daytime (717) 795-0330. Their 24-hour hotline is: (717) 728-8800.

Social Groups...

...Rainbow Riders-Gay and Lesbian Motorcycle Club forming for the South Central PA area. Scheduled rides and socializing. For more information call (717) 229-2703.

...Womynspirit - You are invited to a safe and sacred space where womyn may explore and express their own unique spirituality. Where we may find strength in ourselves and each other. We meet the 4th Friday of every month in Carlisle. For details e-mail Jennifer Polhemus at jpolhemus@aol.com, or Joanne Kinsey, (717) 486-3259.

...Triangle Interests... A national nonprofit, Lesbian membership organization working to build the economic strength, and improve the quality of life, of the Lesbian community. TI is the sponsor of Triangle Interests Federal Credit Union (TIFCU), the first national credit union formed to benefit Lesbian Women. TI also offers financial seminars, business networking, social activities and health insurance. For info call: (215) 487-3736. VM#1; E-mail: ti@triangleinterests.org Website: www.triangleinterests.org

...Shippensburg Circle. Women from the Shippensburg, Carlisle, & Chambersburg area get together monthly. Connect through our e-mail list or phone. To get info or put yourself on our list, call (717) 530-1743 or lkuj125@innet.net.

...GLORA (Gay & Lesbian Organization of Reading & Allentown) is a group that gathers at least 2x/month to do fun activities and make new friends. We sponsor a broad range of events. To contact GLORA write: P.O. Box 1952, Allentown, PA 18105, or E-mail: GLORAinPA@aol.com.

...Book Discussion Group. If you like to read,...join our book club. We meet the 2nd Sunday of the month at 6pm. Call Caroline (717) 545-3164 for this month's book and meeting place.

...THE LESBIAN ALLIANCE OF SOUTH-CENTRAL PENNSYLVANIA. Activities include potlucks, bi-monthly newsletter, media liaison, and any other event that the group is willing to take on. Membership dues are \$10 per household. To get on the mailing list or for more information, call Kate or Cindy at 848-9142.

...The Central Pennsylvania Womyn's Chorus wants you!!! Join now and you can be in our April concert, Singing For Our Lives! The chorus rehearses at 7 pm every Monday night (except holidays) at St. John's Lutheran Church, 44 W. Main St. in Shiremanstown. For directions and more information about the chorus: call President Lucy at (717) 938-5051, see our website: www.cpwchorus.org, or e-mail info@cpwchorus.org.

...HOWL (Hanging Out With Lesbians), is a diverse group of womyn with diverse interests. They do just about everything from camping to concerts, frisbee, fireside chats, horseback riding, snow tubing, movie nights, you name it! These womyn know how to have fun! You can visit their website: <http://www.homestead.com/howlofpa/index.html>



Wee Baby Moon
Productions

Affordable Web Design
For Your Business or Organization

Beth Shupp-George
717-262-4328

www.weebabymoon.com
info@weebabymoon.com

Classified Ads

...Housemate Wanted, non-smoker preferred, to share 4 br, 1.5 BA house in mid-town area of Harrisburg. Pets and rent negotiable. Call (717) 260-0202.

...For Sale - 2 MAC Formatted Zip 100 MB Fujifilm Disks, never used, bought by mistake. First \$20 takes them! Call (717) 766-0602.

FYI

HOWL (Hanging Out With Lesbians) has changed their website address. It is now <http://www.homestead.com/howlofpa/index.html>. Don't forget to change your bookmark or your favorites to the new site!

CALL FOR MODELS

Deb Swanger, an artist who photographs individuals and couples from the community, is searching for models to volunteer for upcoming images. If interested in participating or finding out more information, please call Debbie at (717) 560-1335, or e-mail her at debbieswanger@aol.com.

Our photographer/artist friends, Beka Schiller and Deb Swanger, have been accepted into a multi-media show in NYC! The show is:

Unfolding Desire - Fulfilling Desire

5th Annual Lesbian Biennial

January 15 - March 16, 2002

This show is at the Leslie-Lohman Gay Art Foundation, 127-B Prince St., NY, NY. 10012. It's a women's show consisting of all media that speaks to the issue of women's concerns and love for women.

If your plans take you to The Big Apple during that time, make plans to stop at the Foundation to see the show in Soho!

The Center for Women's Creative Expression is still running its exhibit of Wounds and Wombs - Paintings and Ceramics by Re Desabres, until January 28, 2002. Hours are 10 am to 4 pm Saturdays, and 1 pm to 3 pm Sundays, and by appointment. For more information, call (717) 238-6244, or e-mail womencreate@aol.com. The Center is located at 1507 N. Third St., in mid-town Harrisburg.

Loaves of Love, a food bank for people with HIV/AIDS, located at the Harris Street United Methodist Church, 1605 Susquehanna St. in Harrisburg, needs the following items: peanut butter, jelly, tuna, nuts, napkins, 4-roll packs of toilet paper, paper towels, tissues, fruits, adhesive bandages, gauze pads and tape, first-aid cream, antibacterial spray for cuts, toiletries, including travel size, Ensure and vitamins. If you would like to donate some of these things, please call (717) 877-6674 to set up drop-off arrangements.

The Gay and Lesbian Switchboard of Harrisburg needs YOU!! The Switchboard needs volunteers and money! They are looking for people who could man the call center a few hours each month. Training is provided to all who volunteer. They are averaging 80 telephone calls per month, which is a significant increase over past years. It also takes money to operate the Switchboard! The Switchboard is currently experiencing larger financial obligations than in previous years. They want to continue in their role of being a viable resource for everyone. Your generous support will help them grow and continue the good work in the LGBT community. All donations are tax-deductible! Won't you please help? All it takes is 5 minutes to fill out the enclosed membership form and write a check, put it in an envelope and mail it to the Switchboard! YOUR COMMUNITY'S FUTURE BEGINS WITH YOU!!

VALENTINE'S DAY

It's Thursday, February 14! It'll be here before you know it! Have you made plans for you and that special lady yet? What are you waiting for?

Education....

The National Gay and Lesbian Task Force has announced the February 1 application deadline for Messenger-Anderson Scholarships. This scholarship program will award four \$5,000 scholarships to gay, lesbian, bisexual and transgender high school seniors or undergraduate students who plan to pursue a bachelor's degree in journalism at an accredited four-year college or university.

Applications for the NGLTF Messenger-Anderson Scholarship Fund must be post-marked by February 1, 2002. Download guidelines and an application at: <http://www.nglft.org/about/messenger.htm>. Winners will be announced in Spring 2002, and the awards will be distributed in August 2002. A committee of working journalists, communications specialists, and GLBT activists will select the winners.

HRC....

The Human Rights Campaign has announced the creation of the HRC Relief Fund. Money sent to the Relief Fund will be used only to help GLBT families impacted by the Sept. 11 terrorist tragedy. Donations can be made to:

Human Rights Campaign Relief Fund
919 18th St., 8th Floor, NW
Washington, D.C. 20006

MOVING?

If you are moving or have moved recently, please let the Lavender Letter know! Please send a change of address card so we know where to send your Lavender Letter! Thanks!

January at the PINK LIZARD

- Fri-Jan 4 9PM Come out to hear DJ NANCY spin those classic disco tunes!!!
- Fri-Jan 18 10PM DRAG SHOW...DC invades Harrisburg
- Friday-Jan 25 9PM GRANDMA & THE PENNSMEN FUNDRAISER variety of entertainment to benefit Brothers in Need & Trophy Foundation
.....LOOKING FORWARD TO FEBRUARY.....
- Fri-Feb 1 D-Gem Reunion with DJ NANCY. Come out and have a Birthday drink with Marcia
- Sun-Feb 3 WATCH SUPER BOWL ON BIG SCREEN
Doors open at 12:30. Bring a dish for the Buffet. HALF TIME ...50/50 Drawing, Muff Diving Contest, & lots more surprises!

SUNDAYS	12:30-CLOSE	FOOTBALL ON BIG SCREEN TV
MONDAYS & TUESDAYS	-CLOSED-	
WEDNESDAYS	7PM-CLOSE	7PM-9PM HAPPY HOUR
THURSDAYS	7PM-CLOSE	SURVIVOR ON BIG SCREEN TV
FRIDAYS & SATURDAYS	7PM-2AM	DJ 9PM-2AM

891 Eisenhower Blvd, Harrisburg, PA 717-939-1123 pinklizard891@aol



KAS PAGE BA / CAC II, CCJS
Counseling
Specializing in Addictions
Co-dependency and Sexuality Issues

530 W. Penn Ave.
 Robesonia PA 19551

610-693-8407

LEEDY COUNSELING SERVICES

3201 Spring Road
 Carlisle, PA 17013
 717-241-2345

ANNE T. LEEDY, MS,
 NCC, NBCCH
 Therapist

- *Individual, couples therapy
- *Survivors of abuse
- *Hypnosis
- *Past life regressions
- *Holistic healing

SABRINA LAY
ELECTROLYSIS
 Permanent Hair Removal

Helping people feel
comfortable, self assured,
and stress free since 1984

FREE CONSULTATION

Taking appointments at
The Golden Door
 2009 Market Street
 Camp Hill, PA
 763-1884

REBECCA A. GILLELAN, M.S.
 LICENSED PSYCHOLOGIST

Suite 401
 4755 Linglestown Road
 Harrisburg, PA 17112

Telephone: (717) 657-8848

Linnea T. Bailey, Ph.D.
 Licensed Psychologist

450 Murry Hill Dr.
 Lancaster, PA 17601
 (717) 581-1232

doctor@linneabailey.org  www.linneabailey.org

Mind • Body • Spirit



JUDY'S
HOUSEHOLD
SERVICES

Too Busy To Clean?
 I Do Cleaning &
 Other Household Tasks
(717) 579-8402



Financial
Advisors

Gayle Sicchitano
 Personal Financial Advisor
 Registered Representative

American Express Financial Advisors Inc.
 IDS Life Insurance Company
 818 Sycamore Circle
 Camp Hill, PA 17011

Bus: 717.763.7147 Fax: 717.763.0961

Frog Hollow

Canadensis, Pennsylvania

"A 1920's cottage nestled
 deep in a Pocono Mountain hollow"

Ski, swim, golf, fish, boat, horseback ride, & hiking nearby.

Rent weekends & weekly
 jegg@sunlink.net

570.595.2814



Hosts
 Joan & Judy

GIOVANNI'S ROOM

345 SOUTH 12TH STREET · PHILADELPHIA PA 19107 · PHONE: (215) 923-2960

**The World's Biggest & Best
Lesbian, Feminist and Gay
Bookstore**

*Store & Mail Order
Call now for catalogs*

MON, TUES, THURS 11:30 TO 9 · WED 11:30 TO 7 · FRI 11:30 TO 10 · SAT 10 TO 10 · SUN 1 TO 7

Health Spotlight....

JANUARY IS CERVICAL CANCER AWARENESS MONTH

What is cervical cancer? Cancer of the cervix is one of the most common cancers that affect a woman's reproductive organs. Would you believe that 95 percent of cervical cancer cases come from various strains of the human papillomavirus (HPV), which is a sexually transmitted infection?

When exposed to HPV, the immune system response in most women prevents the virus from doing any harm. However, in a small group of women, the virus survives for years before it will convert cells on the surface of the cervix into cancer cells. Cervical cancer is most likely to occur between the ages of 30 and 55.

Thanks to Pap smear screening, the death rate from cervical cancer has fallen by 70 percent since the 1940's. Every year an estimated 12,800 women in the U.S. find out that they have invasive cervical cancer, and that about 4,800 will die from the disease.

What signs and symptoms should I be looking for? Early cervical cancer has no signs or symptoms. As the cancer progresses, these signs can appear: bleeding from your vagina after intercourse, or between periods, or after menopause; a watery, bloody discharge from your vagina that may be heavy and have a rather foul odor; a dull backache and general poor health in the later stages.

Am I at risk for cervical cancer? If you have had your first sexual encounter before the age of 18, you are at risk. Why? Less mature cells seem to be more susceptible to precancerous changes that HPV can cause. Have you had many sexual partners? And have your partners had many sexual partners as well? Many sexual partners greatly increases the risk of getting HPV. If you have any STD's (sexually transmitted diseases), you have a greater chance of having been exposed to HPV.

All women should have a yearly Pap smear done. It's a simple, life-saving test. When caught in the early stages, the survival rate is very high. What are you waiting for? Call your doctor's office now!



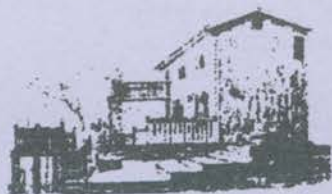
Stoney Ridge (570) 629-5036

P. McCarrick, RR 1 Box 67
Scotrun, PA 18355

For that "Warm Country Feeling in the Poconos"

Beautiful, secluded, cedar log home completely furnished with all the modern conveniences.

Located to nearby skiing, canoeing, hiking, antiques and fine dining.



Blueberry Ridge (570) 629-5036

P. McCarrick, RR 1 Box 67
Scotrun, PA 18355

For that "Warm Pampered Feeling in the Poconos"

Beautiful, secluded guest house with a view. Includes outdoor hot tub, VCR in every room. Breakfast included. Located near Camelback Ski Area.

20 Charming Rooms
Peace & Privacy

A LESBIAN PARADISE

The Highlands Inn

P.O. Box 118
Bethlehem, NH 03574
(603) 869-3978
1-877-LES-B-INN (537-2466)

100 Acres • Pool
Hot Tub • Trails

www.highlandsinn-nh.com
vacation@highlandsinn-nh.com

Advertising Rates

Business Card Size (2" x 3½")	Double Card Size (4" x 3½")
One Month \$ 20.00	One Month \$ 40.00
Six Months \$ 100.00	Six Months \$ 200.00
One Year \$ 170.00	One Year \$ 340.00

Other Services:

Personal Ad (5 lines) ... \$5.00 Insert (1/3 page) \$40.00
Events & News.....FREE

Information must be received by the 20th of each month.

Copyright 2001, Lavender Letter, P.O. Box 266, Mechanicsburg, PA 17055. (717) 766-0602. Contents may not be reproduced unless authorized in writing by the Editor. We reserve the right to edit/reject any submissions. Sorry, personal and dating ads will not be accepted. Calls will be returned in the evening or on weekends. If your call is not returned within 3-4 days, the machine may not have recorded your message properly, so please call back!

Rates: \$15⁰⁰/year or \$25⁰⁰/2 years

Subscribe...

Donations: \$10⁰⁰ \$25⁰⁰ \$50⁰⁰ \$100⁰⁰

Lavender Letter

P.O. BOX 266

MECHANICSBURG, PA 17055

PHONE/FAX: (717) 766-0602

E-MAIL: LAVLET4WOMYN@AOL.COM

Name:

2nd Name:

Address:

City:

State:

Zip:

Telephone: ()

E-Mail:

START your membership

The Switchboard is always looking for help with its programs. Its takes money and volunteers to operate the Switchboard. If you would like to help by volunteering to serve on the the phone line, helping with one of our special projects, or helping financially through membership or a donation, give us a call or write GLSH and use the attached form. Thank you for your help!

JOIN HERE

NAME _____

PARTNER'S NAME _____

STREET ADDRESS _____

CITY, STATE, ZIP CODE _____

PHONE _____

E-MAIL _____

\$15 Member

\$20 Couple

\$25 Sustainer

\$50 Patron

\$100 Benefactor

\$250 Underwriter

Donation _____

Make Check payable to GLSH. Mail to: GLSH, PO Box 60927, Harrisburg, PA 17106-0927

I am interested in volunteering for: _____ the telephone line _____ committees/projects

_____ Please send me information about listing my business/organization with the Switchboard

_____ Please send me information about advertising in the Switchboard newsletter

Please return this form with payment. GLSH is a 501c(3) non-profit organization.

All contributions are tax-deductible to the extent allowed by law.