

LGBT History Project of the LGBT Center of Central PA

**Located at Dickinson College
Archives & Special Collections**

<http://archives.dickinson.edu/>

Documents Online

Title: *Who Framed Lily White?*

Date: July 21, 1996

Location: LGBT-043 Ray Myers Collection

Contact:

LGBT History Project
Archives & Special Collections
Waidner-Spahr Library
Dickinson College
P.O. Box 1773
Carlisle, PA 17013

717-245-1399

archives@dickinson.edu

LILYBILL

Who Framed Lily White?



**Sunday, July 21, 1996
8:00 P.M.**

**Ramada Inn on Market Square
2nd & Chestnut Streets
Harrisburg, Pennsylvania**

**A musical comic farce of 1940's murder mysteries designed to
leave you laughing in the aisles while raising funds for
The AIDS Residential Task Force and the
South Central AIDS Assistance Network (SCAAN).**

STRAWBERRY CAFÉ

Monday through Saturday
2:00 pm until 2:00 am

Strawberry Cafe, Inc.
704 North Third Street
Harrisburg, PA 17102

Thanks

**Lily White &
Company**

From



*Love
ya!*

Lily White and Company, Inc.

presents

Who Framed Lily White?

**A Benefit Performance for The Greater Harrisburg Foundation
Benefitting The AIDS Residential Task Force
and the South Central AIDS Assistance Network**

**RAMADA INN ON MARKET SQUARE
HARRISBURG, PA
JULY 21, 1996 - 8:00 P.M.**

Directed By Paul R. Foltz

With Choreography by Ray Myers

Scenic Design by
Lindsay Mills

Lighting Design by
Jack Gottschalk

Costume Design by
Paul R. Foltz

Sound Design by
Michael Troutman

Property Design by
Don Bailey

Hair Design by
Jack Sowers

Stage Manager
Ed Shriver

*Music used by special arrangement with A.S.C.A.P. and
B.M.I. INTERNATIONAL*

Sandwich Man, Inc.



30 N 2nd Street, Harrisburg
236-7171

5640 Allentown Blvd, Harrisburg
236-7171

872 Harrisburg Pike, Carlisle
245-2472

Specializing in take out, catering and party subs!



ALL CLUES POINT TO CAPITOL TUXEDO.

SUPERSTORE	COLONIAL PARK MALL	CAPITAL CITY MALL	TUXEDO OUTLET
5517 CARLISLE PIKE MECHANICSBURG	NEAR SEARS HARRISBURG	NEAR J.C. PENNEY CAMP HILL	325 S. 18th ST. HARRISBURG
790-9914	657-3827	737-5522	232-4184

and CAPITOL CLEANERS Fairview Plaza, New Cumberland 774-3822

GREAT LOOKS*GREAT PRICES

IN MEMORY OF ROBERT SIMPSON

Lily White & Company
Board of Directors

President

Ken Oakes

Vice President

Joel M. Stauffer

Secretary

Penny Woolsey

Treasurer

Dennis B. Hollinger

Members-at-Large

Bryon Bigelow

Michael Clarke

Jean Horvath

Pat Manatt

Lindsay R. Mills

Steven Patton

Jack Sowers

Ex-Officio Member

Daryl K. Morris

Dr. Eric W. Selvey

Managing Director

Paul R. Foltz

Artistic Director

m

NEIMAN · MAY

communications

**Public Relations,
Issue Management,
Marketing of Non-Profit
Organizations**

204 Harrisburg Transportation Center
Harrisburg, PA 17101-2302
Phone: 717.232.7110
Fax: 717.232.7998

**Gay and Lesbian
Switchboard of
Harrisburg, Inc.**

**Proudly serving
the community
for over 20 years**

**(717) 234-0328
6-10 pm, M-F**

**Annual Membership
for as low as \$10.00!**

*Looking for a gathering of
glittering gentlemen and lovely
ladies celebrating their pride
in the community?*

**You're Invited
to Attend
The 1996 Fall
Achievement
Banquet**

Saturday,
November 9, 1996
201 E. Green St.
Mechanicsburg, PA



Ticket price includes hors d'oeuvres, nationally renown speaker, award presentation and entertainment. Call 236-8241 for details on tickets, sponsorship and advertising.



ISAAC'S

"An Exotic Aviary of
Soups, Salads and Sandwiches"

Oakhurst Shopping Center
2900 Linglestown Road
Harrisburg, PA 17111

717-541-1111

From The Managing Director

It gives me great pride and pleasure to welcome you to the fourth performance of a Lily White production to the corner of Second and Chestnut Streets. "Who Framed Lily White?" is a concept that has been in the works since last summer and with the help of a determined and demented cast of characters, the finished product will be presented for your approval this evening.

What see on stage cannot begin to match the effort it took to bring both performers and volunteers together for this special evening. Nor does it reflect the overwhelming cooperation Lily White & Company has received from fine civic organizations such as The Greater Harrisburg Foundation, Professional Care and SCAAN. I never could have imagined Lily working together with such community powerhouses! Members of the boards of these groups should commend the executive directors and staff for their kind assistance in raising thus far a mind staggering \$20,000!

I must acknowledge the volunteers and committees of Lily White who continue to prove that the mission is their master, not personal glory. Special kudos go out to the Ways & Means Committee who raised all the funds to put on this production. I am proud to say that all monies donated, all tickets bought, all Lily Bucks purchased, and all tips rendered this evening will go directly to the AIDS Residential Facility and SCAAN because of this committee's fine work.

I would like to also like to thank the cast, volunteers and tech crew who will make this a most magical evening. Your work tonight will make this a most memorable night for many days and months to come.

A very special thanks also goes out to B-TLS, The Neptune Lounge, Strawberry Cafe, and the Stallions. Your continual support of our mission is highly commendable. Words cannot adequately express the gratitude we feel for your efforts in your attempts to pull the community closer together via events like this.

Finally, let me thank you the audience who also continue to give and give and give again without question. Your support of the community via Lily is a wonderful tribute to those we have lost and those struggling to make it day by day.

Dr. Eric W. Selvey

STEVEN C. PATTON

General Merchandise

Silk Screening, Embroidery

Imprinted Sports Wear

T-Shirts, Hats, Jackets, Etc.

Pager Number 230-6057

BAGAL

Business Association of Gays and Lesbians

P.O. Box 135

Harrisburg, PA 17108-0135

**You are invited to join us
at our next social event!**

BAGAL is a South Central Pennsylvania association of lesbian and gay professional and business people.

We sponsor bimonthly events which offer networking, social, and community service opportunities for members and friends.

Prospective members are encouraged to attend their first event free of charge. Membership is open to any person who pays the \$25 per year fee. Dues help to defray the costs of each event and surplus dues are donated to local charities.

For more information:

- Call The Gay and Lesbian Switchboard of Harrisburg
234-0328 (6-10 pm M-F) or
- Call 795-9038 or
- Mail your name and address to the above address

Don't forget to ask us about FAB '96!

From the President

Welcome Friends...

Thank you very much for supporting the 1996 Lily White Summer Show through your ticket purchase, attendance, tips, and enthusiasm. I have met many great people here in Harrisburg, and have volunteered with dozens of organizations both here and in Erie, as well as across the state and nation and I have NEVER met people like the cast, volunteers, members, board, and friends of Lily White & Company, Inc.

As you enjoy the tonight's show, watch the faces and the eyes of the performers and the volunteers. You will sense a love, passion and joy that I would bet you rarely see in others. This show is not about them, it is not just for your entertainment. This show, these people, you, are all about US...it is about caring for each other, for those who need our love and help, and for those who we have lost. Please understand that Lily White & Co. is not just a drag troupe, it is a vehicle for caring, compassion, hope, and community here in our little corner of the world.

This year, we are especially pleased to be working so closely with the Greater Harrisburg Foundation, in support of the AIDS Residence Facility Task Force. Through a grant, the Foundation was able to match, dollar for dollar, all monies raised by Lily White prior to and inclusive of June 30, 1996. From July 1st through tonight and on to June 30, 1997, every dollar raised will be matched by 50 cents. This has allowed us to dramatically increase the money raised this year, and to capitalize on your generosity.

Thanks again for coming, and on behalf of the Board of Directors, the members, the cast, the volunteers, and of course, our many friends...I wish you all the best.

Ken Oakes
President



SOUTH CENTRAL AIDS ASSISTANCE NETWORK
2 A Kline Village, Suite A, Harrisburg, PA 17104-1328
(717) 238-2437 Fax 238-1709

**Thank you for all you do
for the community!**

JACK
Gaughen
REALTOR

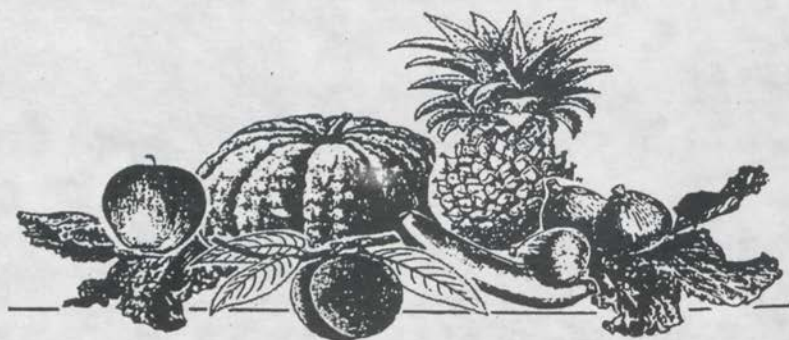


**RAY
DAVIS**
REALTOR®
President's Club

*Serving our community
with pride.*

4099 Derry Street ▾ Harrisburg, PA 17111
Office: (717) 564-5101
Voice Mail: (717) 531-3455 ext. 330
Residence: (717) 234-5703

Cafe On Market



Hours:

- Tuesday - Thursday 11:00 a.m. - 9:30 p.m.
- Friday and Saturday 11:00 a.m. - 10:00 p.m.
- Closed Sunday and Monday

B.Y.O.B - M/C, VISA and American Express Accepted

2138 Market Street, Camp Hill, PA 17011
717-737-4432

Royer's
FLOWER SHOPS

RENEE WENDT
Manager

STRAWBERRY SQUARE
HARRISBURG, PA 17107
(717) 232-7182

Shot Specials Fri. & Sat.
DJ Dancing Fri & Sat.
\$3.00 cover
Game Room & Bar Facilities

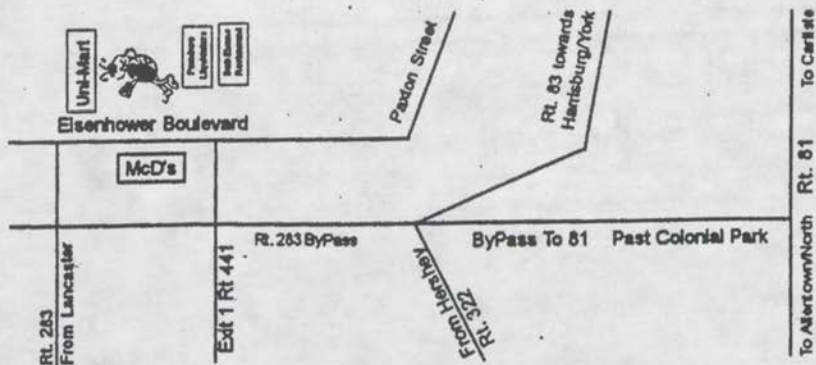
891 Eisenhower Blvd
Harrisburg, PA
(across from McDonalds)
(717) 939-1123



B-TLS

The Womyn's Place to Be!

You must have your I.D. on your person at all times. Proper Attire Required.
Building is available for private parties, holy union ceremonies & other events



**Join us Festival Weekend for the
area's largest PRIDE party!**
FRIDAY - D.J. Jazzy Joyce
SATURDAY - D.J. Heidi

5246 Simpson Ferry Road
Mechanicsburg, PA 17055
(717) 795-9391



SPECIALTY CAKES

BY
Bob Miller

Cake For All Occasions
Cake Sculptures ♦ Award
Winning Decorator

Metropolitan Community Church of the Spirit

P.O. Box 11543, Harrisburg, PA 17108

Service: Sunday, 7:00 p.m.
6th & Herr Sts., Harrisburg



Pastor Eva O'Diam
(717) 236-7387

DŌSHI Center
for
Contemporary
Art

Since 1972

441

Market Street
Harrisburg, PA 17101

Gallery Hours

Friday - Monday, 12 to 4 P.M.

Thursday & Friday, 5 to 7 P.M.

Closed Holidays, Tuesdays &
Wednesdays

GALLERY SCHEDULE

August 1 - 25, 1996

Susan Parsonage / John Philip Sousa

Sunday, September 29 - 3:00 to 5:00 P.M.

Annual Art Auction

October 3 - 27

Contemporary Latino Artists

October 31 - November 24

Linda Sutton / Robert Willis

December 1 - 23 Holiday Show



From The Artistic Director

To our Patrons and Guests of our 1996 Summer Show:

Our warmest welcome and wishes for an enjoyable evening's performance!

It is hard to believe that it has taken nine months to develop this production which we present to you tonight. Harder still to believe are the changes that have occurred on and off stage, new venues to perform in, new projects being tried, new partnerships forged with the Greater Harrisburg Foundation, Professional Hospice Care and Positively HIV. Even the news from the medical community has been encouraging over the past few months with new drug therapies, vaccine possibilities and the suggestion that AIDS could one day be considered a manageable illness. All of these wonderful new experiences aiding us in the fulfillment of our mission and leading to the day when doing shows like this will no longer be a necessity. Can you imagine attending a Lily Show just for the fun of it? That is the dream I truly cherish.

Unfortunately, the news has not all been good and the latest statistics are chilling at best. We have to continue to educate the uninformed, to support, physically and emotionally those who are sick and to provide a safe haven for those who are nearing their final days. This is a task far beyond the capabilities of any individual or single organization. It is completely achievable, however, by a system of informal partnerships, like this one tonight, of individuals and groups cooperating systematically with one another to meet specific needs in our Community.

If there is any good to be found in these past years of this epidemic, perhaps it is in the realization that none of us can afford to try to "go it alone." We are all parts of a single community and the more strongly we forge the links connecting us together, the greater our chances are for the day that we can come to one of these shows "just for the fun of it."

For myself personally, and for the Company, our deepest thanks for all your support in the past and our trust in your continued goodness toward all who rely upon it.

Paul R. Foltz a.k.a. Lily White

WASSEROTT'S[®]
EVERYTHING MEDICAL SINCE 1921

(800) 385-6646

JCAHO ACCREDITED

26 Hummel Avenue
Camp Hill, Pa. 17011

Where Neighborhood People Meet!



Pool, Darts, Bowling, Pinball...Fun!!!

WHERE FUN IS ALLOWED!!!

Daily Specials • Draft Beer Pitchers • Food & Beer Takeout



crafts gallery and needlepoint

712 green street
harrisburg 17102

one block from the capitol

(717) 236-8504

Who's Who in this Twisted Tale

Daryl	Edward Kimberly, Mr. GREEN
Eric	DETECTIVE SAM SPADE
Miss Jackie	BRIQUITE O'SHAUNESSEY
KAREN DEE	SHIRLEY'S MOM
KATHY MICHAELS	EMILY KIMBERLY
KELLY GREEN	SALLY JOE MACFEELEY
LILY WHITE	HERSELF (IT IS HER LIFE AFTER ALL)
MISSY MONROE	LEMON VERBENA
MYSTERY KING	PRIMROSE PARADISE
PEARLY GATES	PASSIONELLA TALBERT-KIMBERLY
RICK	EVERY OTHER MALE ROLE
ROB	MILES, THE AGENT
TRUCKSTOP TRISH (BOY OH BOY!)	THE CHILD STAR FROM HELL

And, of course, those are only the primary roles -
You'll just have to figure out the rest

Act I

SCENE 1 - GROWLMAN'S ASIAN THEATRE

IT BETTER BE GOOD	COMPANY
BACKSTAGE BABBLE	COMPANY
DETECTIVE JOE	SAM AND THE BOYS

FLASHBACK 1 - THE MISS CORN HUSKER COMPETITION AT THE STATE FAIR IN TWISTED ANKLE, LOUISIANA

LOUISIANA HAYRIDE	LOUISE & COMPANY
I'M CUTE	PRIMROSE WITH BOYS
CAIN'T SAY NO	LEMON VERBENA
YODEL SONG	SALLY JOE MACFEELY AND HER COWS
INCOME TAX	LILY WHITE

THE TWISTED ANKLE TRAIN DEPOT - IMMEDIATELY AFTER

ATCHISON, TOPEKA AND SANTE FE	COMPANY
-------------------------------------	---------

FLASHBACK 2 - BOBO'S BAR AND GRILL IN NEW YORK

BOBO'S	PEARLY GATES
PRIVATE DANCER	BRIGITTE O'SHAUNESSEY WITH ERIC, KELLY, LILY AND RICK
TEN CENTS A DANCE	MISSY MONROE
GET MARRIED SHIRLEY	SHIRLEY'S MOM
I KISSED A GIRL	SHIRLEY

FLASHBACK 3 - HOLLYWOOD

THIS TIME WILL BE OUR TIME	MISSY & COMPANY
I KNOW	PASSIONELLA TALBERT
BE RUTHLESS	JACKIE, KELLY AND THE CHILD STAR FROM HELL
SEIZE THE DAY	LILY & COMPANY

INTERMISSION - 20 MINUTES

Act II

SCENE 1 - THE SOUNDSTAGE OF MISS KIMBERLY'S LATEST PICTURE
MASQUERADE COMPANY

SCENE 2 - MISS O'SHAUNESSEY'S FAVORITE HANG OUT,
SHORTLY THEREAFTER
TOUGH TO BE A FAIRY DARYL, RICK AND ROB
LADIES WHO LUNCH BRIGITTE

SCENE 3 - HOLLYWOOD AND VINE, LATER THAT NIGHT
GIRLS OF THE NIGHT LADIES OF THE COMPANY
WHITE LIMOSINE TRUCKSTOP TRISH
AND THE GIRLS
BRING ON THE MEN SALLY JOE AND THE GIRLS
NOW I'M FOLLOWIN' YOU SAM & EMILY KIMBERLY

SCENE 4 - COOK COUNTY JAIL
CELL BLOCK TANGO MYSTERY, KAREN, KATHY
LILY, TRUCKSTOP TRISH & KELLY
TROUBLE MISSY AND PEARLY
WHEN YOU'RE GOOD TO MAMA BRIGITTE O'SHAUNESSEY
WEALTH LILY

SCENE 5 - THE SOUNDSTAGE OF MISS KIMBERLY'S NEXT MOVIE
YOU ARE MY IDOL PEARLY AND THE BOYS
GET HAPPY KELLY GREEN AND THE BOYS

SCENE 6 - EDWARD KIMBERLY'S ROOM AND THE STAGE OF THE
BLACK ORB AWARDS (COMMONLY REFERRED TO
AS THE "BOOBIE PRIZES")
PUT A LITTLE MORE MASCARA ON EDWARD & COMPANY
APPLAUSE LILY & COMPANY

AND THE SCENE FADES TO BLACK

The "Framed" Crew

Director

Paul R. Foltz

Managing Director

Dr. Eric W. Selvey

Producers

Daryl K. Morris

Jack Sowers

Stage Manager

Ed Shriver

Assistant

Stage Manager

Jean Horvath

Music Directors

Mike Troutman

Paul R. Foltz

Dr. Eric W. Selvey

Lighting Designer

Jack Gottschalk

Choreographers

Paul Foltz

Ray Myers

Set Designers

Lindsay Mills

Steve Patton

Set Crew

Ed Fuhrer

Chris Greene

Bill Grimm

Dennis Hollinger

Allen Phoenix

Jeff Roberts

Denny

Shift Crew

George Anspacher

Raymond Lontz

Mark

Follow Spots

Bonnie Fitzsimmons

Mary Wildeman

Michael Wildeman

Costume Designer

Paul R. Foltz

Costumes

Bryon Bigelow

Karen Dangolovich

Kathy Michaels

Heidi Neuhaus

Tim Rhinehart

Jack Sowers

Props

Don Bailey

Hair Styles

Jack Sowers

Bryon Bigelow

Jeff Nagle

Tim Rhinehart

Dressers

Michael Clarke

David Schrope

Gypsy

Mike

Hostesses

Carlotta Jalopena

Tawny Mitchell

Michelle Lee Sterling

Front of House

Glenda

Rich Askey

Ushers

Carmello Claudio

Randall Dantzler

Susan Lavaranda

Barb Lenda

Drew Loftus

Mike Reiber

Mike T.

Cameras

Beth Heisman

Tommy Frederico

Box Office

Jan Tamanini

Extras

Ron Parish

Bob Feldman

Sean Paulk

Dollar Girls

Ashley Alexander

Kelly Brooks

Thomasina

Ways & Means

Contact

Lindsay Mills

Public Relations

Contacts

Daryl K. Morris

Pat Manatt

Program Design and Layout

Crossroad Publications,
Inc.

Stylist * Peter



Don Charles
Superior Salon Stores
Inc.

Camp Hill Mall • Camp Hill, PA
731-8331

* Full Service *

Hair

Nail

* S A L O N *


★ Sebastian ★ KMS
★ Nexus ★ Redken
★ Matrix ★ Nioxin ★
★ FERMODYL ★ Not a Rusk
★ TERRE ★ BAIN OPI ★ ABBA
★ Gramm WEBB

Paul Mitchell

★ more!! ★

* FREE-CONSULTATIONS *

IT & LY Haircolour



COAKLEY'S

THE PLACE FOR PRIME RIB and MORE!



305 BRIDGE STREET
NEW CUMBERLAND, PA
774-5556

BANQUET AND MEETING ROOMS
AVAILABLE FOR GROUPS
WEDDINGS, PARTIES, ORGANIZATIONS, ETC.

For further information or to reserve a date call
774-7649 or 774-5556

OPEN 11-9

CLOSED SUNDAY
& MONDAY

CALIFORNIA CAFE

52 WEST POMFRET STREET • CARLISLE, PENNSYLVANIA 17013

THOMAS M. HALL
OLIVIER HAZAN

(717) 249-2028

- Discount Buying Services
- Product Brokerage
- Fundraising



Sue Bauman
Betty Fundalevicz

(717) 234-9510



Congratulations!

BREAK A LEG!

Central Medical Equipment Company
3517 Walnut Street • Harrisburg, PA 17109

Camp Hill Shopping Mall



Thirty-Second Street and Trindle Road
Camp Hill, Pennsylvania 17011
717-737-6527
717-737-6429 FAX

MARY LOU BEDDOW
General Manager

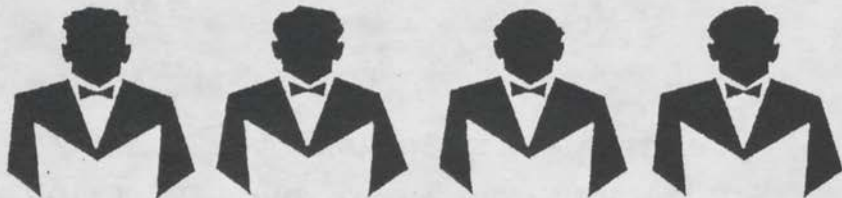
HARRISBURG MEN'S CHORUS

Auditions

Monday, August 26 & Tuesday, August 27
7:30 - 9:30 PM

2nd United Church of Christ, Green & Verbeke Streets, Harrisburg

FOR FURTHER INFORMATION CONTACT:
Daniel Krynak, Artistic Director at 469-1377



The AIDS Alliance for Greater Harrisburg



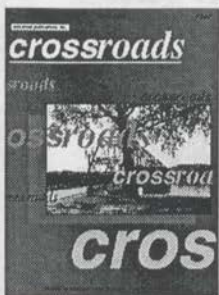
The AIDS Alliance for Greater Harrisburg is a project convened by The Greater Harrisburg Foundation

and co-convenes the South Central PA AIDS Planning Coalition. The AIDS Alliance is not a social service agency itself, rather, it raises local funds and national matching funds and makes grants to support AIDS prevention and care.

The AIDS Alliance is a local partner of the National AIDS fund. It receives matching funds for local funds raised for AIDS prevention and care as well as an administrative grant from the National AIDS Fund. The National AIDS Fund is dedicated to eliminating HIV disease as a major health and social problem. It works in partnership with public and private sectors to provide care and to prevent new infections.

Among the grantmaking priorities for the AIDS Alliance are education and prevention, AIDS affected children, a residential care facility, information services and care coordination.

We thank Lily White and Company, Inc. for supporting the AIDS Alliance with this performance and welcome the inquiries and support of the audience. Please telephone Sandy Pepinsky at 236-5040 if you would like additional information.



crossroads is here!

The bimonthly periodical that showcases the alternative community and its contributions to Central Pennsylvania.

An outlet for feature articles, short stories, reviews, poetry, etc. as well as an eye on the national scene and how it affects the community in the mid-state.

Future Issues to Spotlight...Same-Sex Estate Planning...Getting Into the PA Ethnic Intimidation Act...Harrisburg's Search For An AIDS Hospice...Preserving HERstory...Discrimination Among Central PA's Transgendered...And Lots More!

PLUS...Monthly Horoscopes, Restaurant, CD and Book Reviews, Commentary, Real Estate, Tips, Health Issues, and Our Community Resource Guide telling what's available and what's going on in the months ahead!

You can pick up your issue of crossroads at

The Bare Wall ▾ Hbg. Media Play ▾ Hbg. Sweet Passions ▾ Hbg. MCC of the Spirit ▾ Hbg.
B-TLS, Neptune Lounge, Stallions and Strawberry Cafe ▾ Hbg. Her Story Bookstore ▾ Hallam The Herb Merchant ▾ Carlisle
Peachies Court ▾ Williamsport Alland's Ranch ▾ Spring Grove

Call (717) 221-1220 for information on advertising, writing contributions and subscriptions.

"IN MEMORY OF"

RON "TAJ" PHILLIPS	NICKY BOSONIC	DALE GOODWIN
JOHN SLEMONS	LARRY MESSINGER	DONALD CHUBB
GREG KECK	GEORGE PARKS	RICHARD KITCHENS
STANLEY LIGHT	JIM TREGEA	RICK TEATSWORTH
JEFF WITCOMBE	GARY NORTON	GARY LATCHFORD
ALAN HEMSTROUGHT	PAUL SHAUL	LARRY BETTS
EDDIE STEIGERWALD	FRANK SHAUL	BRAD ZIMMERMAN
FRED BOLLENDORF	SCOTT BARBUSH	DOUG DELANY
MARTY POTAR	KEVIN NICHOLS	BRUCE BOOTH
ROGEN BROWN	KERRY ECKLEY	BOBBY DELSANTO
SCOTT RUMMEL	JOE BETZ	RALPH LAY
JOHN MAXWELL	TOMMY DONAVON	JON MCMILLEN
JEFF HALSTEAD	GREG DENNIS	JERRIN ROGERS
JIMMY STOCKDALE	JAMIE SHOEMAKER	JOHN JENDELL
TOM RAMSEY	GARY SNYDER	RICHARD NESBITT
ED SHINDLER	JOE LIPPI	SEAN FEGAN
RICHARD HODGEKISS	JOHN DOUGEN	RAYMOND MUZA
JAMES WAGNER	JACK HARVILETZ	MICHAEL METTI
BILL WOODSIDE	CHARLES GIBBLE	DENNIS STEWARD
BOBBY PEACOCK	JIM KOHLER	BILLY D. WEIBLEY
LEE FORRY	GARY HANNAKEN	CARL SHRAWDER
BOBBY MESSINGER	GUY GOODMAN	DON FLECK
JOHN LENKER	JIM SHENK	WAYNE GREENE
RICH BRASHERAS	RON YUENGLING	BOB GRIFFIE
JERRY CHESTNUT	PAUL SNYDER	GENE DELANEY
JOE LEH	AMEL FRENCH	JEFF FELKER
JOE TUCCI	LENNY CATON	JAMES CAMERON
ZOLI KREVSKI	TIM DOYLE	KENNY HARDEN
TOM "TOTO" MCGOVER	BRIAN BENNER	GARY GRAHAM
BARRY MELLOTT	SCOTT CRAUL	RICK WATKINS
CARMELO LOZANO	"TYLER"	KEVIN SHUBERT
THOMAS JERGENS	LARRY WRIGHT	VINCE NEUFER
GARY PATTON	BOBBY STAPLES	DANNY BOBB
BILL SMITH	RODNEY STRANICK	JESSE WALTERS
BILL HILDEBRAND	TIM A. SHORT	GLENN C. CALHOUN
JOHN LYNCH	JOHN PFROM	DANIEL KLINEPETER
ROBERT J. MUHLFELDER	GARY KOHLER	WARREN FAKE

UNDERWRITERS

Victor

Dennis Hill

Sweet Passions

Lily's "Real" Girls! - Break a Leg Girls!

Neptune Lounge and Paper Moon Restaurant

Stallions Entertainment Complex

Strawberry Cafe

PATRONS

Pat, Penny & "Mom"

Cathy Eash & Theresa Shank

Tim McCleese

Steve Patton, Chris Greene & Jeff Roberts

Jan Frye & Gwen Jones

Frank & Wally

Bryn Davies

Lindsay Mills

Crossroad Publications, Inc.

Ed Shriver

Miglino Associates

Direct Response Marketing Advertising Copywriting
Creative Development and Direction Product Development

Thomas L. Miglino
Director
(717) 234-7448

1519 North Front Street
Flat 3B
Harrisburg, Pennsylvania 17102

Thank You! Thank You! Thank You! Thank You!

To the Staff and Management of The RAMADA INN on Market Square, B-TIs, Executive House, Tha Harrisburg Community Theatre, The Neptune Lounge & Paper Moon Restaurant, the Stallions Entertainment Complex, The Strawberry Cafe and The Vault

Thank you to the Businesses which provided the awards for the "Suspect Bartender Contest": Bare Wall, Cafe on Market, California Cafe, Camp Hill Shopping Mall, Coakley's, Heaven, Isaacs, Market America, Market America, Paper Moon, Royers Flowers, and Salon Ambience. Please don't forget to Patronize these fine establishments.

A Very Special THANK YOU to Miss Glenda and Michelle Lee Sterling for organizing, as well as the performers who worked so hard, in the series of Budget Raising Cabarets that were produced for the Company. We wouldn't be here without you!

*And to you, our Audience and Supporters -
Your kindness is beyond Measure*

SALON AMBIANCE

AN UPSCALE SALON

****experience the style****

Put yourself in an inviting environment where the atmosphere overwhelms you with a touch of class!

Specializing in straight perms, and corrective coloring.

In addition we also offer the latest in nail care and professional skin care services.

**East Gate Plaza
5205 Simpson Ferry Road
Mechanicsburg,
691-0287**

appointments recommended, employment inquiries welcome

We Need a Name!!!

The AIDS Residence Facility is closer to reality, but we need a name! You can help. Listed below are names that have been suggested for a new facility. However, we're sure that you could probably come up with a few names of your own. To help you, we are offering a \$75.00 gift certificate to the Golden Sheaf---the Harrisburg Hilton's acclaimed restaurant! Put your thinking cap on!

Place a check mark in the box beside the name you like best. If you have another suggestion, write it in the blank below.

- | | |
|--|---|
| <input type="checkbox"/> Cameron Commons | <input type="checkbox"/> Red Ribbon House |
| <input type="checkbox"/> The Community House | <input type="checkbox"/> Red Ribbon House |
| <input type="checkbox"/> 1904 Place | <input type="checkbox"/> The Red Ribbon Residence |
| <input type="checkbox"/> Proposed Name _____ | |

Your Name _____ Phone _____

City/State/Zip _____

Send to:

**Professional Hospice Care • 3605 Vartan Way • c/o Name Contest
Harrisburg, PA 17110**

Deadline for entries: August 31, 1996

Lily Wants You!

Are you interested in Performing?

Working Backstage?

Working on Publicity or Ways & Means?

Becoming a Board Member?

Then Lily Wants You!

Call (717) 232-2918 for more information

and for when rehearsals are

We would Love to see You There!

Lily White & Company, Inc.

Needs your help!

We are running out of Storage space for our
Company Stock i.e., Platforms, Props, Costumes, etc.

If you can help us or know of someone who might be
able please call us at (717) 232-2918

Thank you for your continuous support!

We hope to see YOU

at

The 1996
Central Pennsylvania
Pride Festival



Saturday, July 27, 1996

HACC Campus

Come "OUT" and say "Hi"
and visit the Lily Cantina!



The Paper Moon - 272 North St. - Harrisburg

Take A Bite Of The Big Apple

Featuring:

- Grand Central Sandwich Board
- The Big Apple Burgers
- 5th Avenue Specialties
- Delicatessen Specialties
- Little Italy Pizzeria



706 N. 3rd St.
Harrisburg
236-7554

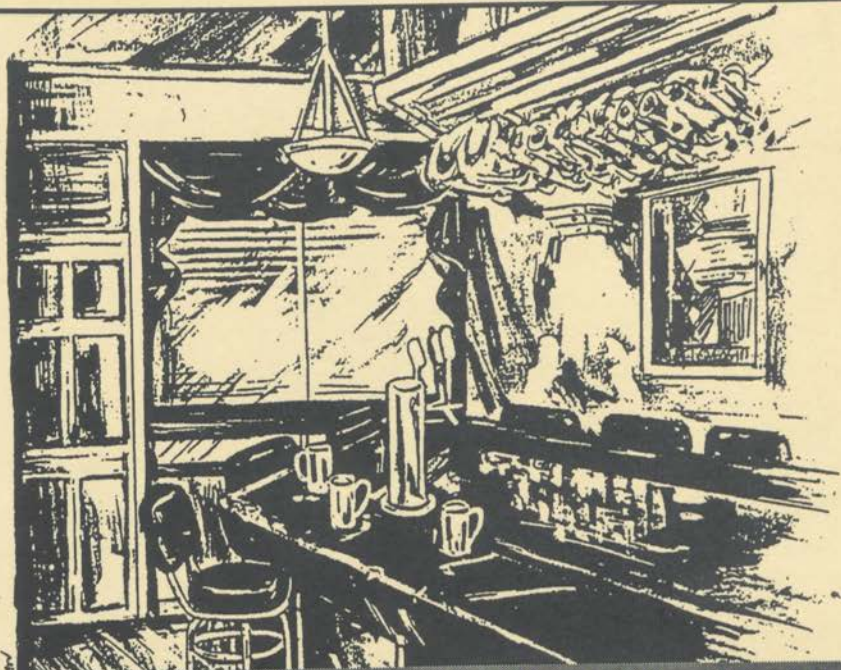
Mon.-Fri.
11:00 am to
2:00 pm

*Taste
A Slice Of
Heaven*

HEAVEN

706 N. Third St.
Harrisburg • 233-4681
Thurs.-Sat. 5PM-10PM
*Banquet & Private Party
Facilities Available*

SATURDAY, JULY 27TH: PRIDE DINNER IN HEAVEN
SUNDAY, JULY 28TH: PRIDE BRUNCH AT NEW YORK, N.Y.
MAKE YOUR RESERVATIONS TODAY! (717)-233-4681



7/20/2011

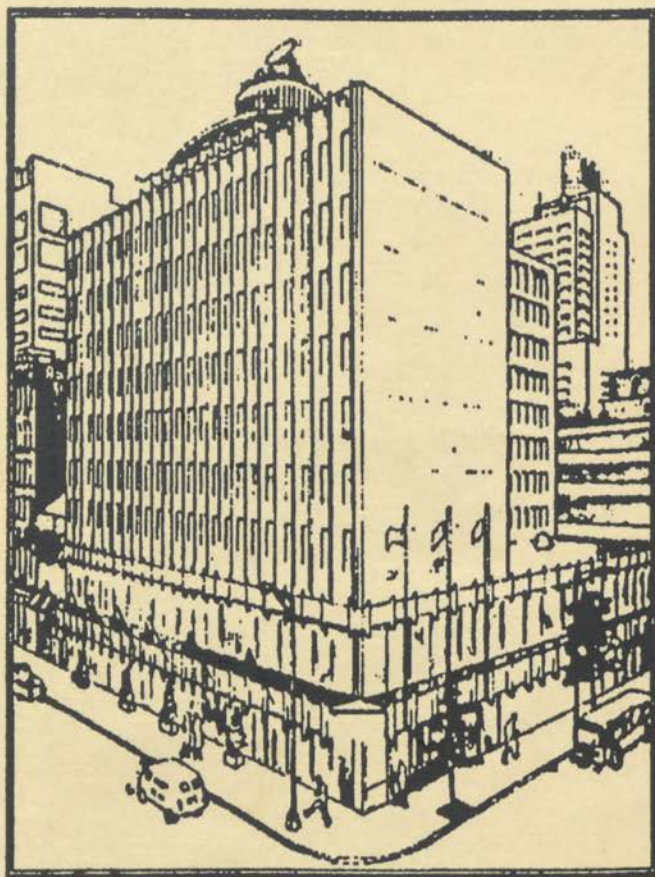
The Neptune Lounge - 268 North St. - Harrisburg

STALLIONS

*WOULD LIKE TO THANK
THE HARRISBURG
COMMUNITY
FOR ITS CONTINUED
SUPPORT OF*

*Ms. Lily White
and her Company!!!*

Harrisburg's Friendliest Address



RAMADA[®] INN

ON MARKET SQUARE

234-5021 or 1-800-2-RAMADA (res)
23 South Second St, Harrisburg