

# **LGBT History Project of the LGBT Center of Central PA**

**Located at Dickinson College  
Archives & Special Collections**

**<http://archives.dickinson.edu/>**

## **Documents Online**

**Title:** Pride Festival of Central PA Official Pride Guide, 2016

**Date:** July 30, 2016

**Location:** LGBT-021 LGBT Center of Central PA Collection

**Contact:**

LGBT History Project  
Archives & Special Collections  
Waidner-Spahr Library  
Dickinson College  
P.O. Box 1773  
Carlisle, PA 17013

717-245-1399

**[archives@dickinson.edu](mailto:archives@dickinson.edu)**



**PRIDE FESTIVAL OF  
CENTRAL PA**

**OFFICIAL**

**PRIDE  
GUIDE**

**July 30, 2016**

**Harrisburg, PA**

**PUBLISHED BY:**



2016-2017 Season



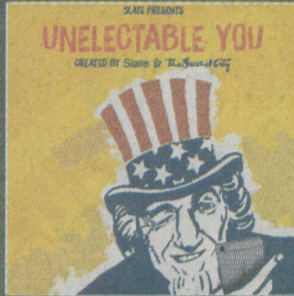
PennState  
York



THE  
PULLO  
CENTER



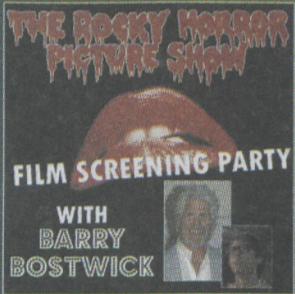
**The Manhattan Transfer**  
with **Take 6**  
October 11 at 7:30 p.m.



**UNELECTABLE YOU**  
Satirical political comedy  
October 13 at 7:30 p.m.



**LIDIA Bastianich**  
Chef/TV host  
October 16 at 4:00 p.m.



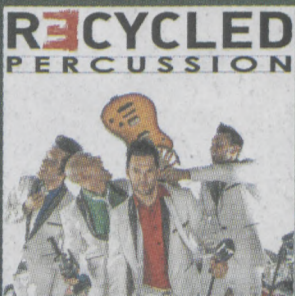
**Rocky Horror Picture Show**  
With **Barry Bostwick** Live  
October 29 at 7:30 p.m.



**Randy Fenoli**  
of *Say Yes to the Dress*  
November 5 at 7:30 p.m.



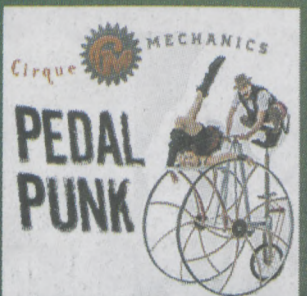
**Vienna Boys Choir**  
Christmas in Vienna  
December 17 at 7:30 p.m.



**Recycled Percussion**  
March 31 at 7:30 p.m.



**The Branford Marsalis**  
Quartet with **Kurt Elling**  
April 20 at 7:30 p.m.



**Cirque Mechanics**  
**Pedal Punk**  
May 2 at 7:30 p.m.

Continue to check our website for a complete listing of events!  
**THEPULLOCENTER.COM ★ 717-505-8900**



## PRIDE FESTIVAL OF CENTRAL PA

PO Box 4213 • Harrisburg, PA 17111 • (717) 801-1830  
centralpridefestival.com • info@prideofcentralpa.org

### *A Word From Our Pride President ...*

As we celebrate Pride this year we are aware that our struggle is not yet over. Marriage equality is only part of the picture.

Pennsylvania still has no LGBT basic civil rights protections. Our hopes for pro-LGBT House/Senate Bill 300 have been dashed by the General Assembly's inaction.

Now we have House Bill 1510 and Senate Bill 974. These measures would amend the state's Human Relations Act to include sexual orientation and gender identity and expression. Current state law allows Pennsylvanians to be fired or denied housing and business services solely on the basis of the person being gay or transgender.

Twenty states across the country have 50 pieces of anti-transgender specific legislation in the works. Nationwide, there have been more than 100 anti-LGBT bills introduced.

With these challenges still ahead of us, Unity is our most effective tool against homophobia, transphobia, and bigotry. That's why our 2016 theme is Unity, It Begins With Us.

BRAD MARTIN, President

*\*LGBT communities across the country - including Harrisburg, Lancaster, Pittsburgh, Milford, Allentown and others - responded to the tragic Orlando Massacre inside a gay nightclub meant to be a safe haven. The fact that in less than 24 hours an online fundraising effort to benefit victims, families, and survivors raised more than \$1 million underscores that we are a resilient people. We do not return violence with violence. Tragedies like Orlando make our resolve even stronger. Tragedies like Orlando bring us together so we can rededicate ourselves to social justice for all.*



ONE COMPANY  
MANY PERSPECTIVES

at any  
crossroads...

your perspective matters.  
At *Hershey Entertainment & Resorts*<sup>®</sup>, your unique background gives us the perspective we need to help 6 million guests navigate to the corner of Cocoa and Chocolate Avenue, where we promise they'll find *Hershey The Sweetest Place On Earth*<sup>®!</sup>

Consider adding your perspective to ours at [HersheyJobs.com](http://HersheyJobs.com)

©2014 Hershey Entertainment & Resorts Company. All words, designs, and phrases appearing with the symbol ®, SM, or TM are trademarks used under license or with permission. 14C211285

Proudly supporting organizations  
to help build stronger  
and healthier communities.



An Independent Licensee of the Blue Cross and Blue Shield Association



**Office of the Mayor  
The City of Harrisburg**

The City of Harrisburg extends its congratulations to the 2016 Pride Festival of Central PA and thanks its leaders and organizers for their hard work in making this an annual spring celebration for our city.

We applaud the Pride Festival's promotion of the ideals of inclusion and diversity. And we stand with you in guaranteeing equal rights for all of our citizens.

This is truly a season of pride for the LGBT community, which has much to celebrate as full contributing neighbors, citizens and friends. We wish you a successful 2016 Pride Festival and thank you for sharing your celebration with the people of Harrisburg.

Respectfully yours,

ERIC PAPENFUSE, Mayor, City of Harrisburg

MLK Government Center • 10 North Second Street  
Harrisburg, PA 17101 • (717) 255-3040

**ART**  
ASSOCIATION  
OF HARRISBURG



*The region's oldest & largest gallery & art school*

**Presents 10 In-House Exhibitions Annually**

**Offers Art Classes for Adults & Youth in 4 Semesters Yearly**

**Offers Art for Individuals & Businesses in the Sales Gallery**

**Is open 7 days weekly, with no admission fee.**

21 N. Front St., Harrisburg  
717-236-1432  
[artassocofhb.com](http://artassocofhb.com)



**MCC**  
METROPOLITAN  
COMMUNITY CHURCH  
OF THE SPIRIT

**Celebrate Pride!**

**CELEBRATION SERVICE**

Sunday, July 31 - 10am

**SPIRITS UNITED INTERFAITH  
PRIDE SERVICE**

Sunday, July 31 - 6pm

*Visit our booth during the  
Pride Festival!*

*Rev. Lori E. Hatch-Rivera,  
Senior Pastor*

*2973 Jefferson Street,  
Harrisburg, PA 17110*

*717.236.7387*

*Sunday 10am \* Wednesday 7pm  
[www.mccofthespirit.org](http://www.mccofthespirit.org)*



## CELEBRATE SUCCESS

Celebrate Success with purchases of trophies, awards, plaques and signs, custom engraved with logos, symbols or messages of appreciation, from the Trophy House.

Please stop by or visit the website.

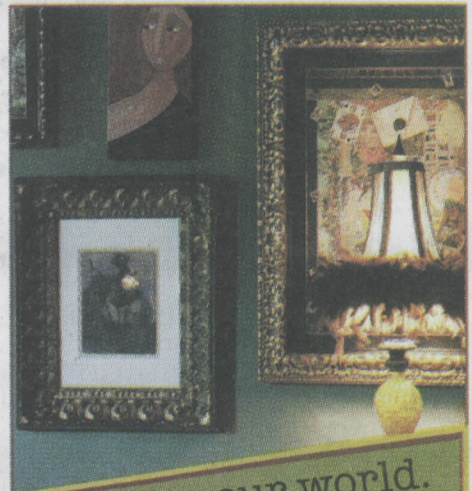
308 Chestnut St., Harrisburg, PA 17101

**717-238-2838**

**[www.trophyhouseharrisburg.com](http://www.trophyhouseharrisburg.com)**

Mary Jane Wertz, Proprietor

**MENTION THIS AD AND  
RECEIVE 10% OFF**



**Frame your world.**

**Framing ■ Artwork ■ Gifts**

[www.thepaperlion.net](http://www.thepaperlion.net)

717.612.9950

1217 Hummel Avenue, Lemoyne, PA

Tues.-Fri. 10 AM-6 PM, Sat. 10 AM-4 PM

**The Paper Lion Gallery**

# *Rest In Paradise, Miss Biscuit*



***Known far and wide for her many talents and kind acts, Miss Biscuit (Jamie Summers) on June 1 passed away, joining the big Drag Show in the Sky. She served as Pride Entertainment Chair from 2003-2009. Biscuit also hosted Pride's Main Stage during those years. She was very active in raising funds for the venue's entertainment. Perhaps she will be most remembered for her quick wit and outrageous sense of humor.***

***From all of the thousands in the region to whom you brought joy, good Pride entertainment, and a good laugh, we'll miss you girl! Tell Glenda we miss her too! Where can we get tickets to your shows in the rainbow clouds?***



# PRIDE FE



RESTROOMS



MAIN STAGE



ENTRY  
SOUTH  
GATE

← VENDORS →



RESTRO



INFO  
BOOTH



FIRST AID

RAILROAD  
BRIDGE

VINE STREET

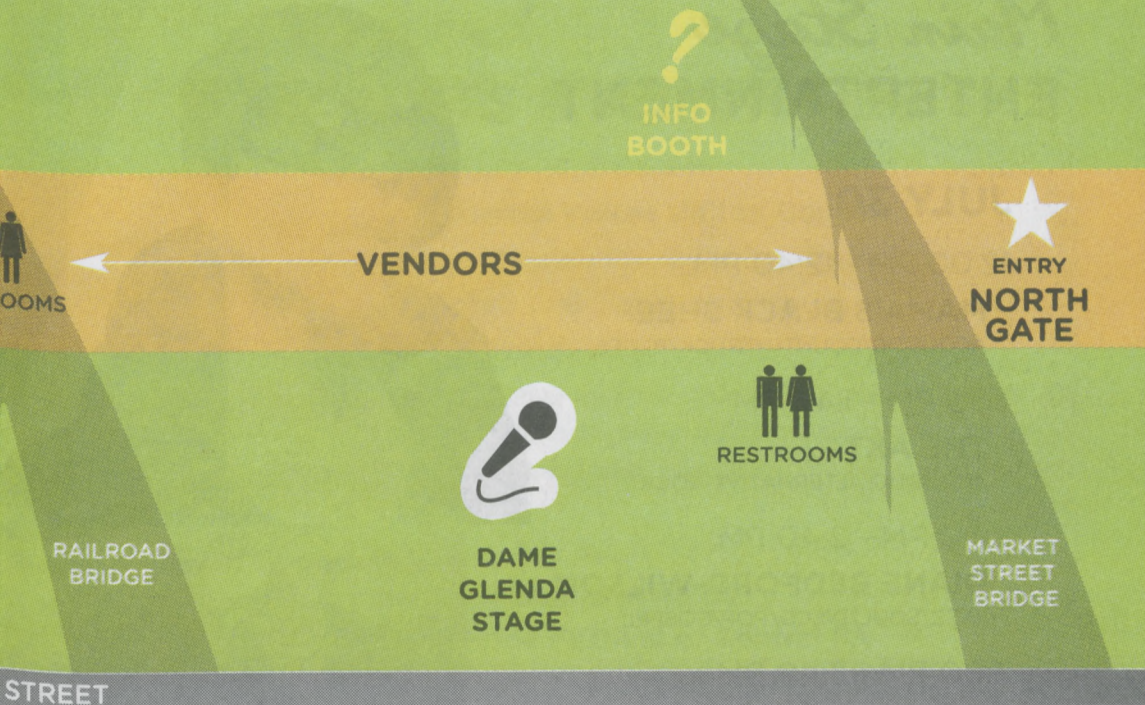
FRONT

VENDOR LIST AS OF 6/2016

## Vendors / Exhibitors

- |                                       |   |
|---------------------------------------|---|
| 4th Inning                            | Green Mountain Energy                       |
| AARP Pennsylvania                     | Harrisburg Gay Men's Chorus                 |
| ALCOA                                 | Helping With Pride                          |
| Basement Waterproofing Specialists    | The Hershey Company                         |
| Capital City Bears                    | Jewish Family Service of Greater Harrisburg |
| Central PA Womyn's Chorus             | Market Square Presbyterian Church           |
| Central Voice                         | MCC of the Spirit                           |
| Classic Dry Cleaners                  | Missi Allen Art                             |
| Colonial Park United Church of Christ | Mid Atlantic Waterproofing                  |
| Equality Pennsylvania                 | Mohr Visions                                |
| Erie Insurance Company                | Oyster Mill Playhouse                       |
| Giant Foods                           | PA Nonbelievers                             |

# EST MAP



## Food Purveyors

Penbrook United Church of Christ  
Pennsylvania Health Access Network  
PNC Bank  
Renewal by Anderson  
Sierra Club  
Simply Stainless  
Survivors Inc.  
Tree Hug Trading Company  
T&R Productions Photography  
Wood 'n Glass  
YWCA of Greater Harrisburg

Family Grill  
International Grill Company  
Keep it Smokin BBQ  
Mad Dash Concessions  
Sherri's Crab Cakes  
Smoothie King  
Soul Burrito  
Thai Master Grill

# EVENT

## Main Stage ENTERTAINMENT

**JULY 30**

12:00 PM - 12:40 PM

**MAMA'S BLACK SHEEP**  
ACOUSTIC/COUNTRY/ROCK/BLUES

1:00 PM - 1:40 PM

**THE AKT**  
ACOUSTIC/ALTERNATIVE ROCK

2:00 PM - 2:40 PM

**DIANE BEDFORD-WILSON**  
JAZZ/SOUL/DISCO/POP/GOSPEL

3:00 PM - 3:40 PM

**LAMBERTO OTTO BAUTISTA**  
SPANISH/R&B/HIP-HOP

4:00 PM - 4:30 PM

**ANTHONY BRUNO**  
POP/R&B/HIP-HOP

5:00 PM - 5:30 PM

**FESTIVAL HEADLINER:**  
**CRYSTAL WATERS**  
DANCE/HOUSE



FOR STAGE LOCATION, SEE PAGES 6 + 7

# GUIDE

## Weekend

### EVENTS & ACTIVITIES

Friday, July 29, 8:00 PM

#### **11th Annual Voices United Concert**

Market Square Presbyterian Church

20 South 2nd Street, Harrisburg

\$15 PER PERSON

A Pride Festival tradition since 2006, Voices United is a musical cantata of various LGBT and allied choral groups of the Harrisburg area.



Saturday, July 30, 11:00 AM - 6:00 PM

#### **Unity, It Begins With Us**

#### **25th Pride Festival of Central PA**

Riverfront Park, South Front Street

\$10 PER PERSON AT EVENT/ FREE FOR CHILDREN 12 & UNDER

Enjoy great food, vendors, activities, a family zone, performances from local drag queens and live music throughout the day.

\*Visit [CentralPAPrideFestival.com](http://CentralPAPrideFestival.com) for advance ticket purchase info.



Sunday, July 31, 6:00 PM

#### **Spirits United**

Metropolitan Community Church of the Spirit

2973 Jefferson Street, Harrisburg

Spirits United provides a safe, non-judgmental, non-confrontational outlet for the diverse spiritual and religious expression of the LGBT community along with its friends and allies Pride Festival weekend.



# PAXTANG CEMETERY

ESTABLISHED 1898

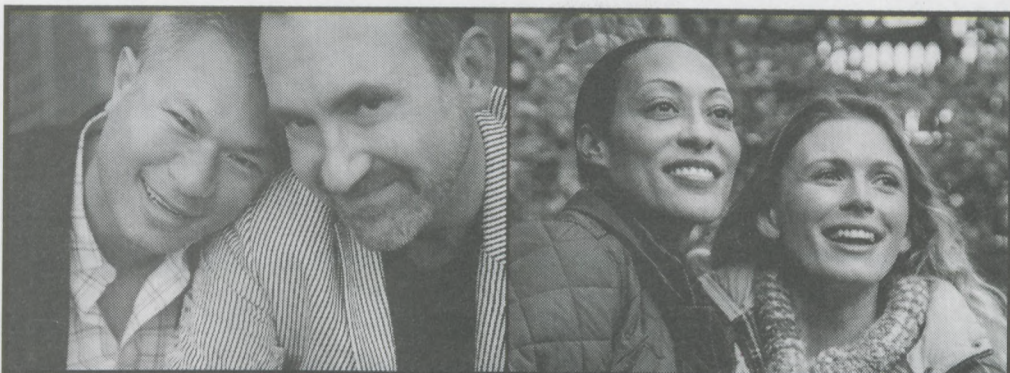
## THE WOOD'S EDGE GREEN BURIAL

Call for more information or  
to set up an Educational Seminar



Why do people choose the type of funeral service that they do for their loved one? Is it because that is all they know, or is it because that is what the person before them did? Or is it because it represents the way the person lived? Most of my childhood was spent playing in the woods, building forts, swinging from grape vines, canoeing down the river, laying in the moss covered ground looking for shapes in the clouds as they passed by, watching birds and listening to their songs, picking wildflowers, climbing trees and so much more. I guess you could say my fondest childhood memories were playing in the woods behind our house. That woods today has been replaced by rows of houses. Gone is my forest playground of yesterday. It has been replaced by brick and mortar, pavement and barren lawns. It's sad sometimes to see the so called "progress of our world." I now own a small cemetery of 33+ acres. 11 of the acres are woods filled with meandering paths through out. The community utilizes them for mountain biking, walking and hiking. It is one of the few green spaces left in the small borough of Paxtang, which borders the city of Harrisburg, PA. We decided to make sure it stayed green by starting the first Green Burial Certified Cemetery in Central Pa. No Vault, No embalming, No Fake Flowers, No Metal or Concrete. In The Wood's Edge we use 100% biodegradable casket or shroud, and the Pa native forest (Trees, shrub and ground cover) is restored on top of every burial. Fitting to the natural setting we use non-quarried boulders to memorialize. The True Ashes to Ashes Dust to Dust Option. Paxtang Cemetery is stepping outside the traditional cemetery box and protecting the forest for future generations to enjoy. If your loved one enjoyed doing activities outside like gardening, bird watching, hunting, hiking, skiing or just being outside observing nature why not honor them with a burial in a setting designed to protect the very thing they loved the most? Come and see it for yourself or check it out at <http://www.paxtangcemetery.com/Green-Burial.html>.

401 Kelso St., Harrisburg, Pennsylvania 17111 Phone: 717.564.2110



# Come Back To Church

We know that many of you have been hurt by church in the past, but we're different. You're welcome here. God loves you just as you are, and so do we.

[www.marketsquarechurch.org](http://www.marketsquarechurch.org)



Free parking in Market Square Garage  
Find us on Facebook



**MARKET SQUARE**  
**PRESBYTERIAN CHURCH**  
*a beacon of hope on the square*



## PROVIDING QUALITY HEALTHCARE *No matter who you are*

- PRIMARY CARE • MENTAL HEALTH • STD SCREENING AND TREATMENT
- HIV/AIDS SERVICES • HEALTH EDUCATION

For more information or to volunteer, please call **717-233-7190** or visit  
[www.alderhealth.org](http://www.alderhealth.org).

**Alder**  
Health  
Services

**LGBT**

## JOIN OUR TEAM

Make a Difference



[www.KeystoneEmployment.com](http://www.KeystoneEmployment.com)

### NOW HIRING

Direct Care Professionals  
Program Directors  
Regional Directors



- Intellectual Disabilities Services
- Autism Services
- Mental Health Services
- Children's Services



Capital Area Head Start  
Susquehanna Service Dogs

EOE Serving: Pennsylvania, Connecticut, & Delaware

The official recruitment and financial institutions for the Keystone Human Services, Keystone Service Systems and Keystone Partnership are in violation from the Pennsylvania Department of Human Resources, which is responsible for the recruitment and financial institutions. For more information, contact the Pennsylvania Department of Human Resources.

## HOLTGATE PODIATRY

717 Market Street  
Suite 101  
Lemoyne, PA 17043  
717.731.1133  
[www.HoltgatePodiatry.com](http://www.HoltgatePodiatry.com)

Dr. Peter S. Holtz, DPM  
accepting new patients

*Compassionate*  
**care**  
in a comforting environment.

**For all your foot care needs.**

The 2016

## PRIDE FESTIVAL OF CENTRAL PA

Committee  
would like  
to thank:

704 LOUNGE | AMTRAK  
BROWNSTONE LOUNGE  
CENTRAL VOICE | ERIE INSURANCE  
GIANT FOOD  
HERSHEY ENTERTAINMENT & RESORTS  
HIGHMARK  
LGBT CENTER OF CENTRAL PA  
PGN | TRANSCENTRAL PA | WET

for sponsoring this year's  
Central PA Pride Festival

# THANK YOU!

# Local Mortgage Experts

With rates as low as they are, it's the perfect time to buy a new home or refinance for potential savings. Connect with JBT for personalized service from a Local Mortgage Expert.

**jbt**  
Bank on a Smile.<sup>®</sup>  
[bankjbt.com](http://bankjbt.com)

Member  
**FDIC** EQUAL HOUSING  
LENDER  
Jonestown Bank & Trust Co.



# Standing Ovation

Here to serve our community.  
Here to protect what matters most.



Erie  
Insurance®

Above all in SERVICE®—since 1925

Auto • Home • Business • Life

Erie Insurance Exchange, Erie Insurance Co., Erie Insurance Property & Casualty Co., Flagship City Insurance Co. and Erie Family Life Insurance Co. (Erie, PA) or Erie Insurance Co. of New York (Rochester, NY). Company licensure details at [erieinsurance.com](http://erieinsurance.com). CMS149b 8/13



**Faulkner**  
TO BE SURE



**SUBARU**  
Confidence in Motion

**We're Proud To Serve  
All Communities in Pennsylvania  
with Two Convenient Locations!**



*Shop our large selection of New and Certified  
Pre-Owned Subaru vehicles 24/7  
at*  
**FaulknerSubaru.com**

Faulkner Subaru Mechanicsburg  
6629 Carlisle Pike  
Mechanicsburg, PA 17050  
Sales: (888) 698-3140  
Service: (888) 634-5269  
Parts: (888) 460-4955

Faulkner Subaru Harrisburg  
3233 Paxton St  
Harrisburg, PA 17111  
Sales: (888) 502-5416  
Service: (888) 313-1481  
Parts: (888) 541-9867