

LGBT History Project of the LGBT Center of Central PA

**Located at Dickinson College
Archives & Special Collections**

<http://archives.dickinson.edu/>

Documents Online

Title: Central PA Womyn's Chorus Newsletter

Date: Fall/Winter 2006

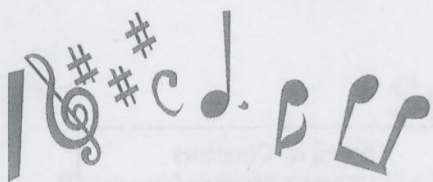
Location: LGBT-086 Marie DiFava Collection

Contact:

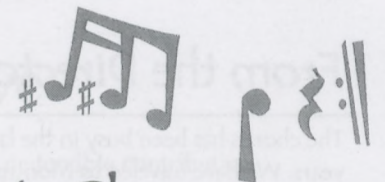
LGBT History Project
Archives & Special Collections
Waidner-Spahr Library
Dickinson College
P.O. Box 1773
Carlisle, PA 17013

717-245-1399

archives@dickinson.edu



Notes from



The Central Pennsylvania Womyn's Chorus

Fall/Winter 2006



UPCOMING EVENTS

October 28

Spaghetti Dinner

November 18

SAS! Concert

TBA - Spring

Pancake Breakfast

May 5

Deep Peace

Spring Concert

www.cpwchorus.org

From the President ...

Welcome to our 2006 Fall season. I feel honored and privileged to be the newly appointed president of the CPWC. Due to health concerns our elected president, Cindy Mitzel, stepped down. We wish her all the good health the universe can provide, and I know we all look forward to seeing her at CPWC events.

It's difficult to look forward without acknowledging where you have been. I'm pleased to say that the CPWC has been in some pretty amazing places. Our Fall 2005 concert, All That Jazz!, was performed at our new home, Colonial Park UCC. In anuary, some members had the privilege of performing at Carnegie Hall, under the direction of Turtle Creek

Chorale director Tim Seelig. For our Spring 2006 concert we had presented WomanSpirit, a collaborative effort reflective of our individual spiritual journeys, at Unity Church in Enola. After bringing a portion of that program to the Unitarian Universalist Church of Gettysburg, we took it on the road to sunny San Diego. We participated as part of the Sister Singers Network festival there, and had a blast.

For our Fall 2006 concert we will be presenting SAS: Sisters and Songwriters. We're teaming up with singer-songwriters Janie Womack and Bobbi Carmitchell to provide you with some of the best local women's music, as well as presenting many groundbreaking pieces

from the Women's Music movement.

In the upcoming year we look forward to seeing you at all of our events. Within this newsletter you'll find all the details. Mark your calendars and get ready for the best CPWC year yet!

Cathy Nelson
President



CPWC members march in the first Pride Parade in 2006!

Spaghetti Dinner

Sat. Oct. 28 • 5:30 pm to 8:30 pm
Colonial Park United Church of Christ

Tickets: \$10
\$5 for seniors/students/children under 12

All you can eat!



Great food, entertainment, and raffle



Central Pennsylvania Womyn's Chorus

Bringing together a diverse group of women, united by the joy of singing, to celebrate and empower women, and to affirm a positive image of lesbians and feminists.

Each CPWC singer created a stole for the spring concert, WomanSpirit, to express her own spirit. See some individual stoles on the website.

From the Director ...

The chorus has been busy in the last few years. We have traveled to Montreal, New York, and San Diego — a chorus on the move! The future is bright and exciting.

We have a vision to produce a CD recording of the group, grow the chorus in numbers and in musical excellence, and to continue to travel to various choral festivals to sing. As a director, I am constantly challenged to look forward into the future and imagine the possibilities of what the chorus can accomplish. This year's theme is collaboration! I have a vision to incorporate other musicians, people, and organizations in our concerts in order to bridge our chorus to the larger community.

This fall I have invited a few guest artists

to perform with us and for us. In the spring, I hope to incorporate women in the larger community in our concert to express the effects of war and violence in their homelands. The vision for the spring concert, *Deep Peace*, is still painted in very broad strokes. As the 2007 spring concert nears, a more detailed vision will come into focus. So stay tuned for more information! I invite you and all of your friends and family to our fall and spring concerts. I promise you will be in for a unique experience that will leave an imprint on your heart and soul. For there's nothing sweeter than the voices of women united in song!

— Giesala Collins

Board of Directors 2006-2007

Officers

President: Cathy Nelson
Vice-President: Cynthia Swanson
Secretary: Cathy Hinman
Treasurer: Miriam Glavina

Board

Class of 2007 Class of 2008

Joanne Nicholson Sandy Boothe
Lucy Twitchell Yvonne Rothstein
Mary Nancarrow Linda Noble
Susan Swope
Shirley Tannenbaum

Festivals and Community, Sharing and Learning

In 2004, CPWC went to Montreal for the GALA (Gay and Lesbian Association of Choruses) festival and in 2006, to the Sister Singers Network festival in San Diego. Why do we go to festivals? We go to learn from our peers, measure ourselves against the best, feel good about our progress, revel in the community with all participants and within our chorus, share our successes, get out of Central Pennsylvania, and have fun!

In Montreal, there were 6,000 people and 130 choruses, filling a packed auditorium with three balconies and 24 box seats. In San Diego, there were about 250 people and 13 choruses in a college facility. Both events were described by participants as thrilling and awesome. In San

Diego, we shared our own *Song of the Dying Amazon* to be sung by a mass chorus and joined with everyone to learn a piece commissioned specifically for the festival. (Josefina Benedetti, the Venezuelan composer, will always be remembered fondly by CPWC.)

Over the past two years, in addition to our full-length concerts, we have performed at:

- Diversity festivals of the Pennsylvania Immigrant & Refugee Women's Network (PAIRWN)
- Amani Festival in Carlisle
- Voices United concert associated with PrideFest 2006
- the first Central Pennsylvania Women's Music Festival in August 2006.

In addition, our booths at community events such as Pride not only raise money for the organization but remind the greater Harrisburg area of the great and powerful musical voices of local women.



The logo for Western Sol in San Diego was designed by JoAnn Lazaro. The festival celebrated the 25th anniversary of the Sister Singers Network.

WomanSpirit Concert Spring 2006

To develop the music and narration for this concert, we gathered personal information from our members to learn each singer's spiritual path, and searched our collective past to celebrate how our female ancestors of song celebrated their spirituality. The concert included a frame drum blessing, dance, chant and music that spanned traditions and ages. Narration between songs was compiled from the questionnaires and interviews and read anonymously. A member who is an art therapist helped us create our

own artwork (the stoles pictured on the front page) as well as personal mandalas which hung in the performance space.

Our audience was deeply moved. One person wrote, "You all enriched and expanded your audience's experience of our own spirituality, as well as helping us understand and respect the special challenges of the lesbian community." Another told us, "As a contentedly single heterosexual, there's not always a lot I can connect with in your concerts. This one, however, was a completely

different matter...the performance itself was absolutely outstanding (and clearly from the heart), more involving than any other concert I've attended." We performed excerpts from the concert at the Sister Singers Network festival in San Diego.

The catalyst for the concert came from a disheartening experience the chorus experienced that touched upon religion versus spirituality. But the result was clearly heartening and a treasured experience that touched both singers and audiences alike.

Support the Chorus You Love

Please send me tickets to the fall concert.

	No.	Price	Subtotal
General Admission		\$15	\$
Student (18 & under)		\$ 5	\$
Senior (65 & older)		\$ 5	\$
TOTAL			\$

PLEASE PRINT LEGIBLY!

NAME: _____

ADDRESS: _____

PHONE: _____

EMAIL: _____

I'd like to make a tax deductible contribution.

____ Until further notice, please charge the amount indicated to my credit card. (\$5 minimum)

_____ \$100 _____ \$75 _____ \$50 _____ \$25

_____ \$20 _____ \$15 _____ \$10 _____ \$ 5

_____ Other

____ A single contribution of:

_____ \$500 _____ \$100 _____ \$50 _____ \$25

_____ Other

FOR PAYMENT

Credit card: _____ Visa _____ Mastercard

Card # _____

Expiration date: _____ / _____

OR Check enclosed for a total of \$ _____.

Contributors: PRINT name(s) as you would like them to appear in our concert program book. (If your individual credit card is being charged and you are part of a couple, you may want to list both your names. You may choose to be listed under a nickname.) If you put nothing here and do not ask to remain anonymous, we will use your name as it appears on your credit card or check.

_____ OR _____ I prefer my donation remain anonymous.

Clip and mail to Central Pennsylvania Womyn's Chorus, PO Box 60426, Harrisburg, PA 17106-0426.

Report from the Fundraising Committee

During the 2005-6 season, more than \$6,000 was raised to support the chorus. Thank you, everyone!

• Our volunteers donned hairnets and aprons to work with Farm Show concessionaires, trading their labor for a percentage of gross revenues of the food stand. Over the course of five months, we served "fair" food to cheerleaders, sportsmen, and people who love horses, zoos, bull riding, and circuses. We brought in a little over \$5900. "I love the fast pace



Fundraising chair Cynthia and volunteers Mary and Sandy dish up the barbecue and hot dogs at Farm Show concession stands.

and keeping the customers happy," says volunteer Yvonne.

• Our Annual Spaghetti Dinner (see ad on first page) and Pancake Breakfast are coming up. Where else can you get vegetarian spaghetti at a community meal in Central Pennsylvania? Or fresh fruit and gluten-free pancakes? We love the opportunity to meet and thank all our supporters. Kokopelli Catering will cater this year's dinner. So, come let the Chorus members serve you dinner while you eat, visit with friends, check out the raffle items and enjoy local entertainment by our own Cathy Nelson and Janie Womack.

• Are you somebody that groans "I never win anything?" Your chances are great at the CPWC raffles at these events. Past items have included special themed baskets, a stay at the Gettysburg Bed and Breakfast, a variety of restaurant gift certificates, jewelry, arts and crafts, and services like massages. Raffle tickets are 6 for \$5. Come prepared to take a chance at the Spaghetti Dinner!

• CPWC singers now have beautiful purple polo shirts, volunteers have logo workshirts, and we have rainbow pens and official business cards. We bring a unified presence, wherever we go! We marched in the first PrideFest Parade and had a booth at the Festival. CPWC is a vital part of our community.

• Many, many thanks to everyone who volunteered at any of our fundraising activities. A special thanks to Volunteer of the Year, Jane Brickley, who worked tirelessly at all Farm Show weekends. She's not a chorus member, but she loves CPWC and what it brings to our community. We are always looking for more volunteers to help. For example, working at the Farm Show is fun — a great way to see the shows (free) and support the Chorus at the same time.

• Don't forget the opportunity to support the chorus by placing an ad in the program book for the concerts. See the enclosed order form.

You don't have to sing—just enjoy helping the Chorus at our many events. Contact Cynthia at 564-0012 or cswanson@dauphinhousing.org.

STAS!

*Sisters &
Songwriters*

Sat., Nov. 18, 2006

8:00 PM

Colonial Park
United Church of Christ
5000 Devonshire Rd
Harrisburg

Central Pennsylvania Womyn's Chorus
presents music by the
singer-songwriters of our own time.

See inside
to order tickets and
place program ads.

with special guests
Bobbi Carmitchell & Janie Womack